

The Willow Hill

BERKS  HOMES



Elevation A



Elevation B

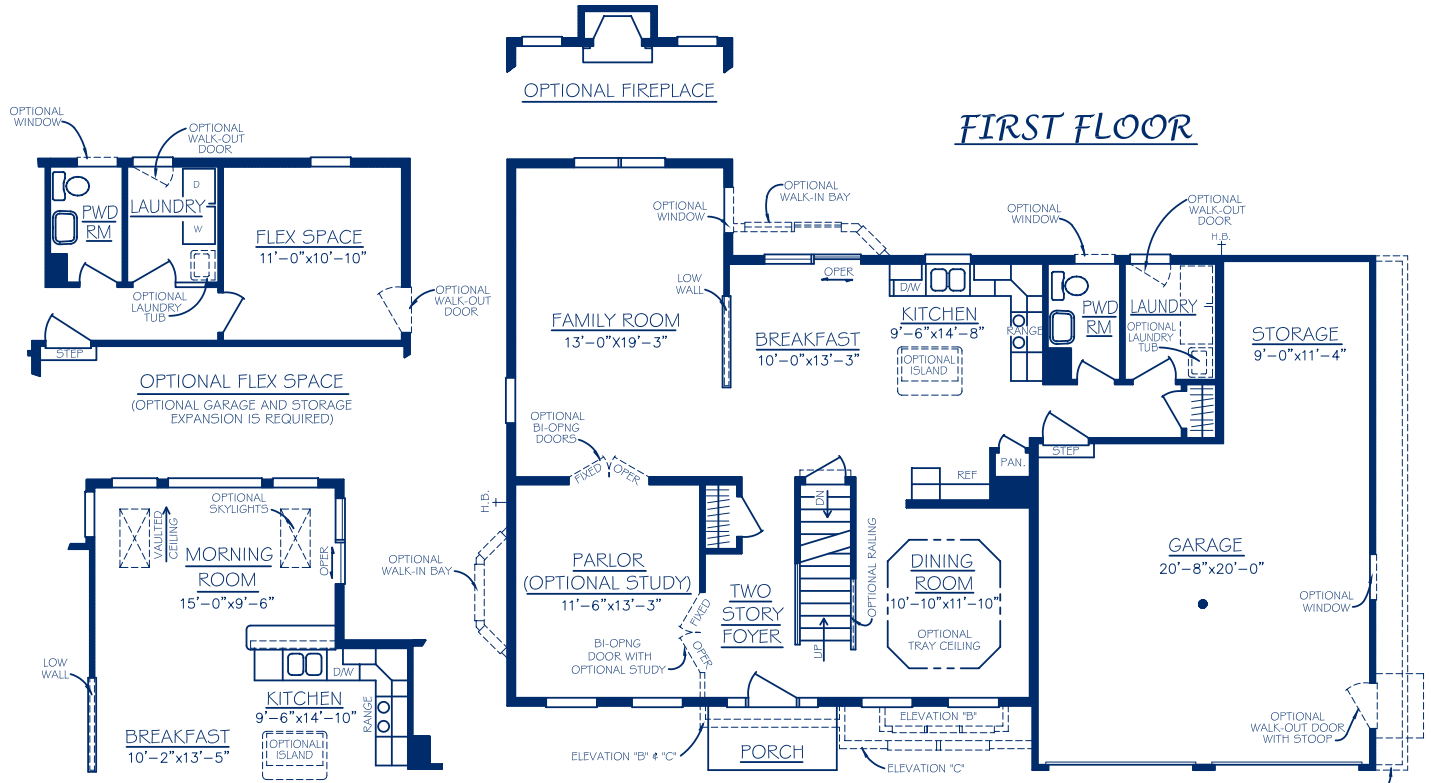


Elevation C

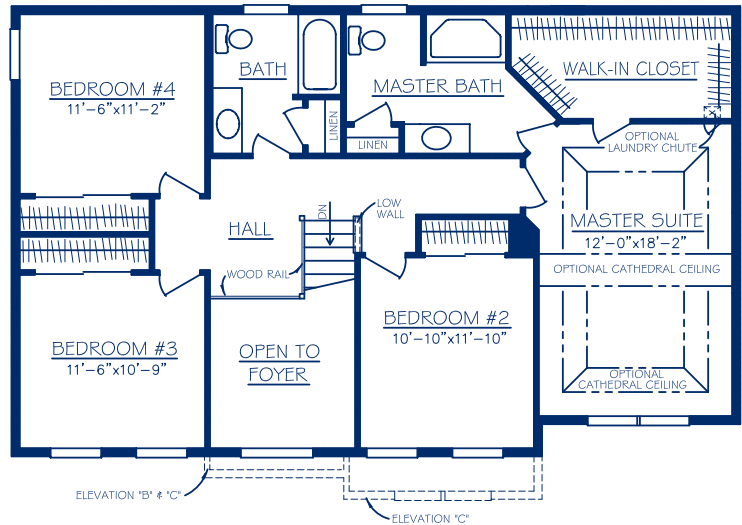
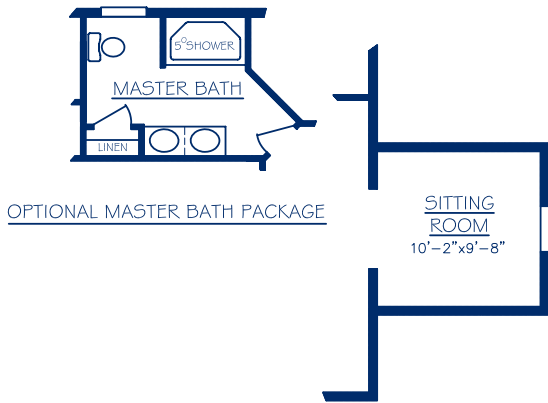
Options Shown:
• *Stone Upgrade*

The Willow Hill

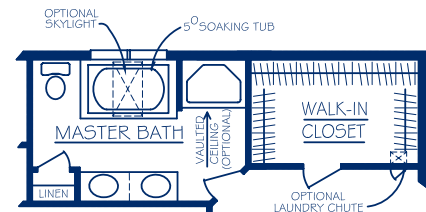
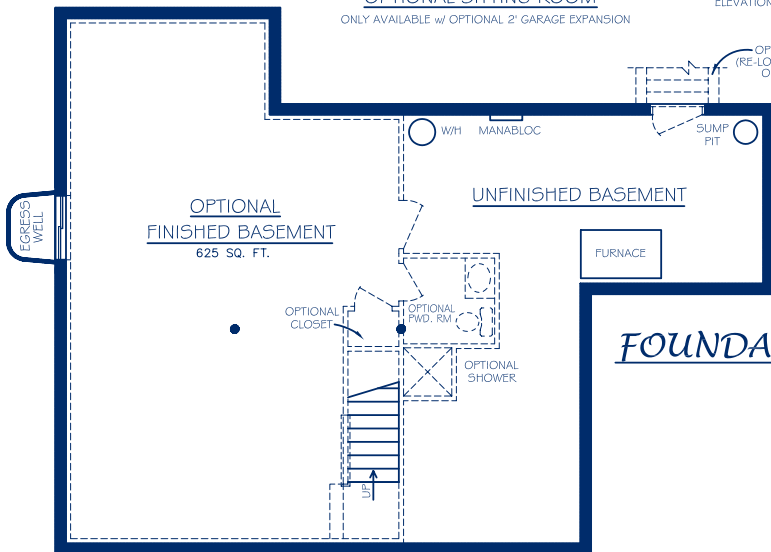
"A" - 2389 Sq. Ft. | "B" - 2438 Sq. Ft. | "C" - 2476 Sq. Ft.



OPTIONAL MORNING ROOM



SECOND FLOOR



OPTIONAL SOAKING TUB PACKAGE

