



AVAILABLE IN 6 COMMUNITIES

- Seiders Hill**
- Ridgewood**
- Stone Mill Estates**
- Hickory Pointe**
- The Horizon at Brush Valley**
- Logan Meadows**



**3
Beds**



**2
Baths**



**2-Car
Garage**



**1,662
-
2,476
Sq. Ft.**

The Abbey is a spacious single-story new home with 3 bedrooms and 2 bathrooms. Its open and inviting floor plan features a large family room that seamlessly connects to the combined kitchen and dining area, creating a perfect space for entertaining and spending quality time with family and friends. The primary suite is a peaceful retreat with an impressive walk-in closet and a private bath conveniently located next to the built-in laundry room. Two additional bedrooms and another full bath throughout this new home by Berks Homes provide ample space for family members or guests to stay. With options to upgrade the bathroom, add a light-drenched sunroom off the kitchen, include a fireplace in the living room, or finish the basement, homeowners have the opportunity to customize this new home by Berks Homes to their unique preferences and needs.

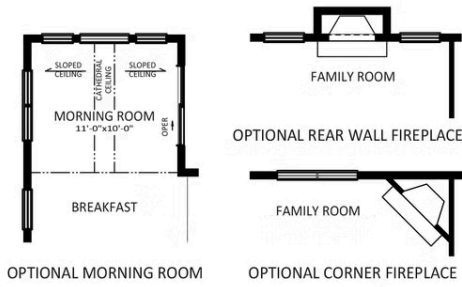


Have Questions? Ask...

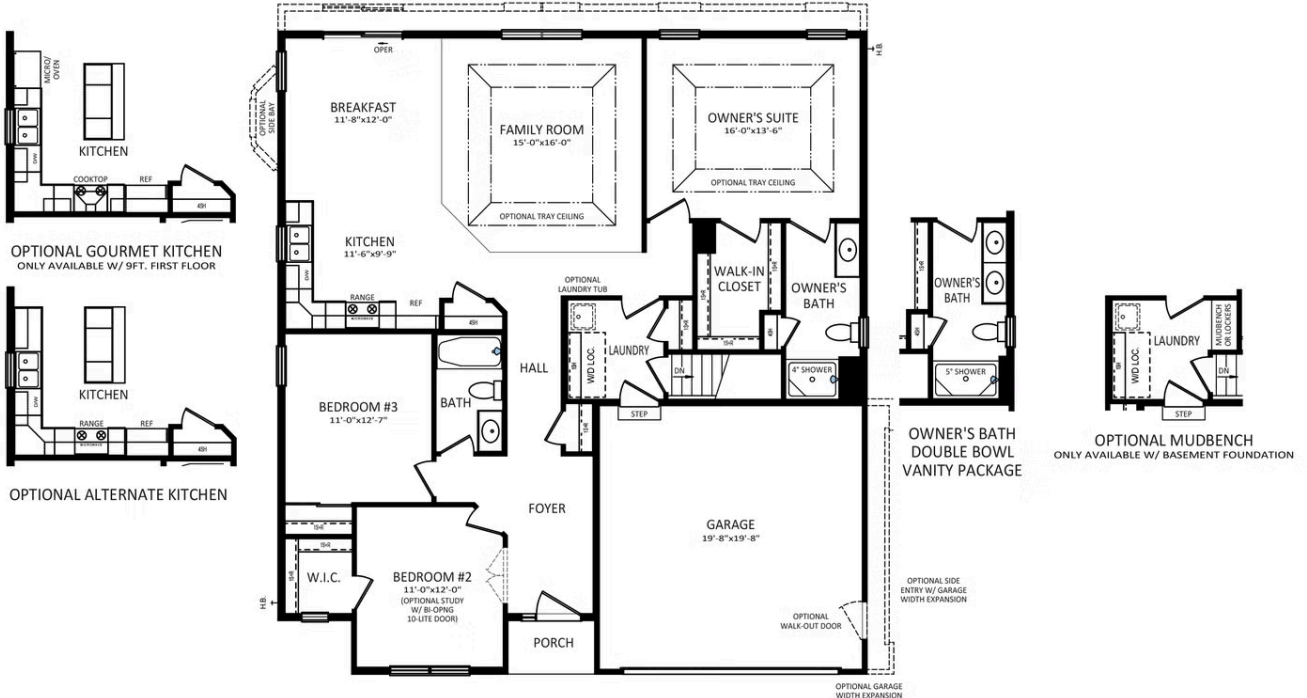
KELLY

(484) 772-2693 / bhmarketing@berkshomes.com





OPTIONAL 1ST FLOOR LIVING AREA EXPANSION



FIRST FLOOR

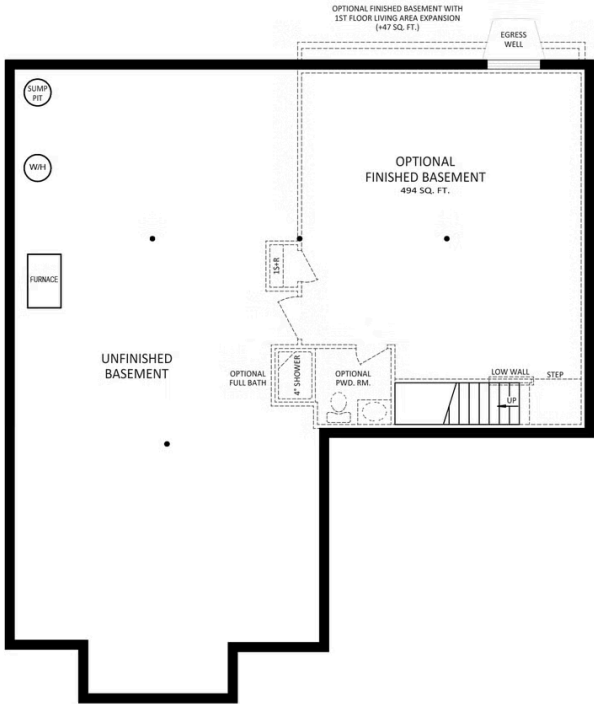
FIRST LEVEL

Have Questions? Ask...

KELLY

(484) 772-2693 / bhmarketing@berkshomes.com





FOUNDATION

LOWER LEVEL



Have Questions? Ask...

KELLY

(484) 772-2693 / bhmarketing@berkshomes.com

