

Cumberland



**3
Beds**



**2.5 -
4
Baths**



**2-Car
Garage**



2,521

-

**3,614
Sq. Ft.**

3 beds | 2.5 baths | from 2,500 sqft

The Cumberland is a stunning one-story new home with 3 bedrooms and 2.5 bathrooms. Its open floor plan design features a family room, breakfast area, and kitchen seamlessly flowing together, creating a central living space for homeowners. Off the foyer, you'll find the dining room for formal occasions and a flex room that offers versatile spaces for work or relaxation. The primary suite is a luxurious retreat for homeowners with two walk-in closets and a private bathroom. This well-designed home has two additional bedrooms, a Jack and Jill bathroom, and a laundry room. With options to add an alternate kitchen, incorporate a morning room, upgrade the primary bath, or finish the basement, you can customize this new home to your liking and create a space that perfectly suits your needs.

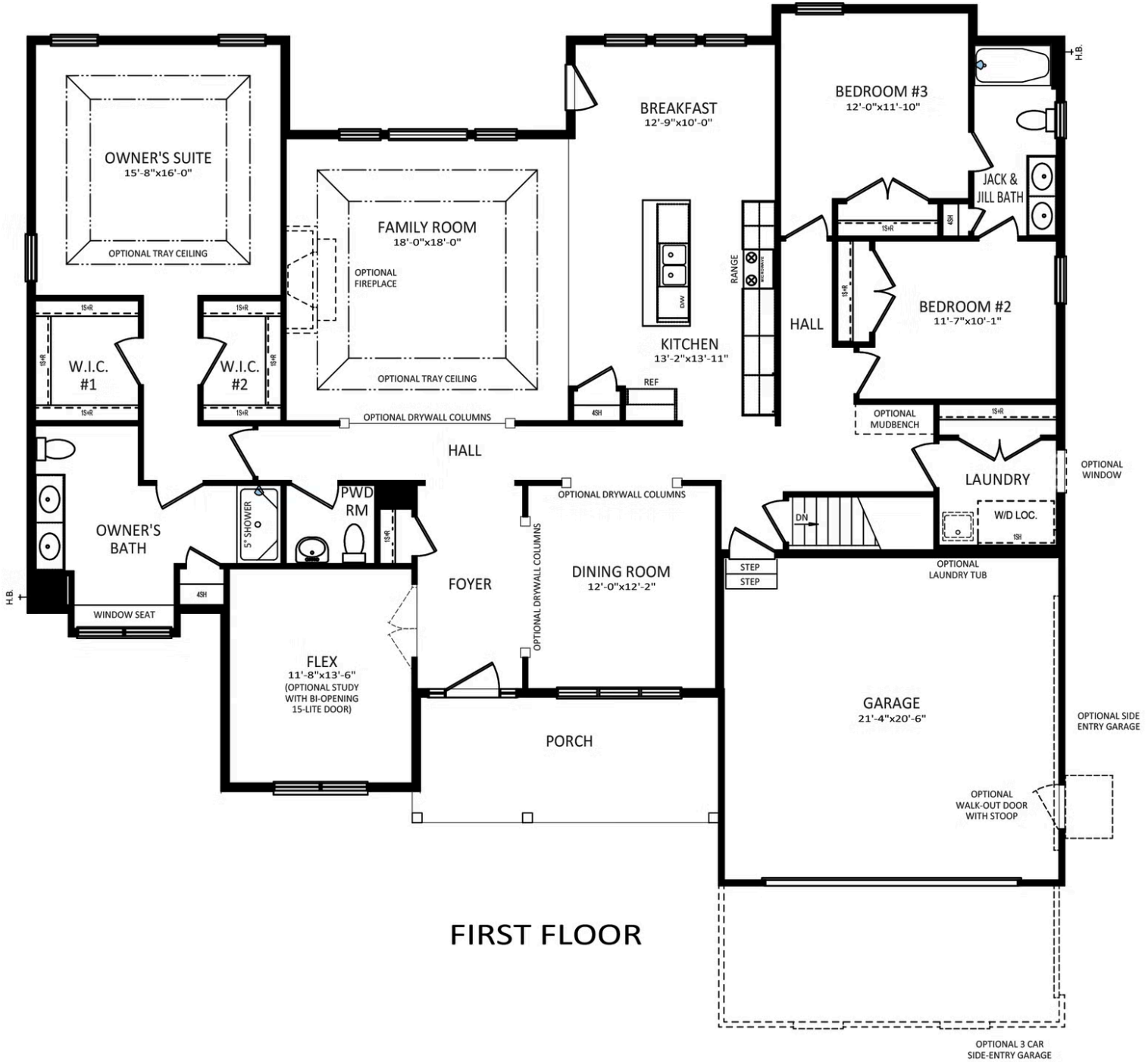


Have Questions? Ask...

KELLY

(484) 772-2693 / bhmarketing@berkshomes.com





FIRST FLOOR

FIRST LEVEL

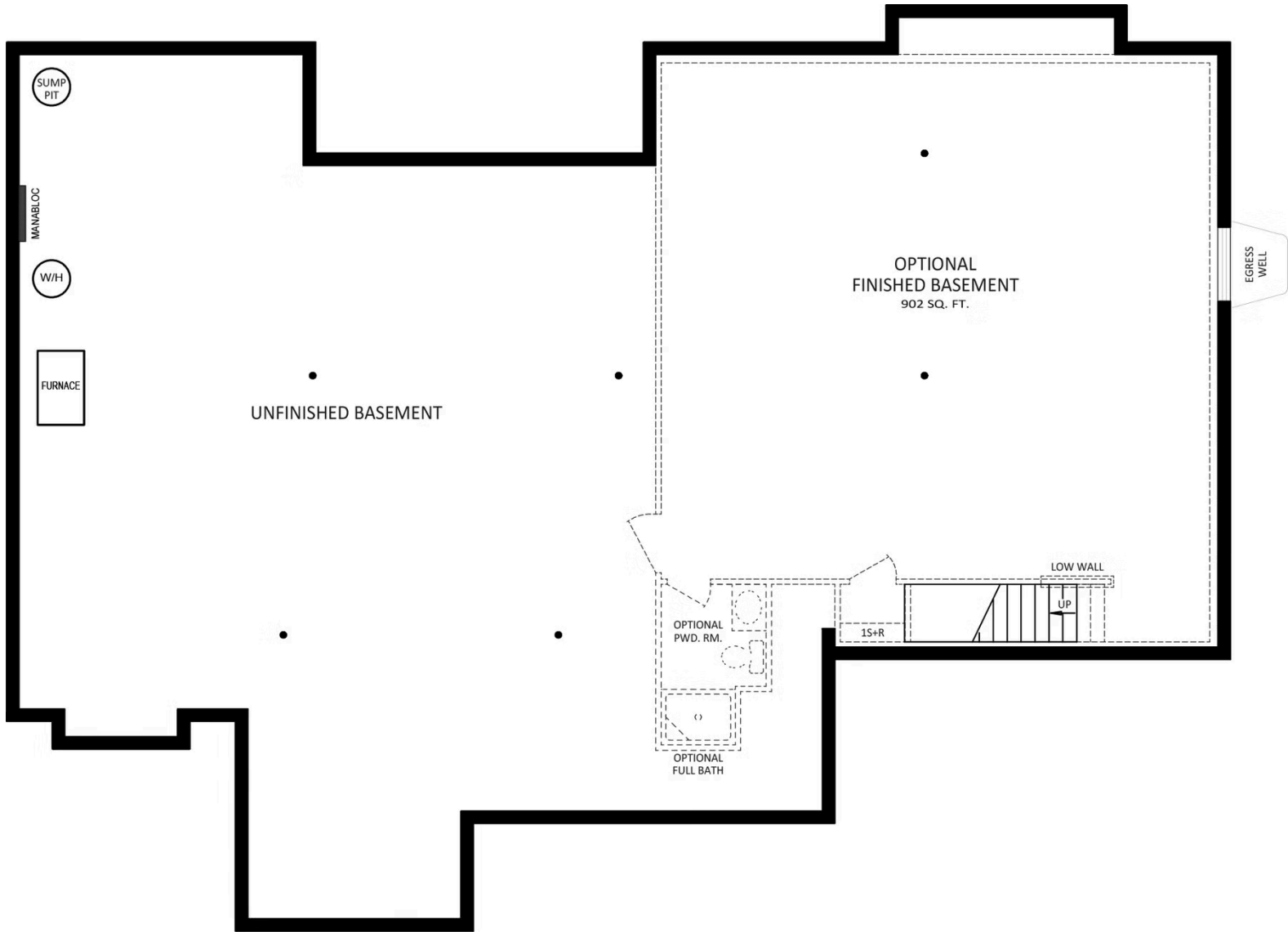


Have Questions? Ask...

KELLY

(484) 772-2693 / bhmarketing@berkshomes.com





FOUNDATION

LOWER LEVEL

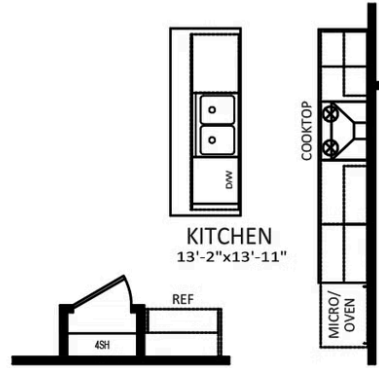


Have Questions? Ask...

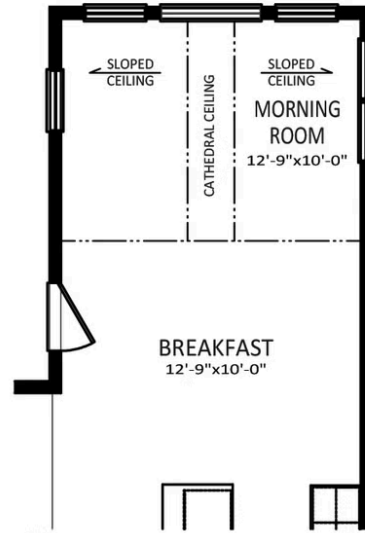
KELLY

(484) 772-2693 / bhmarketing@berkshomes.com

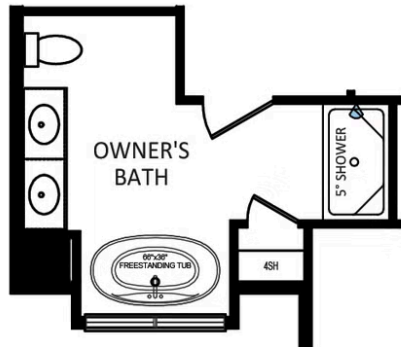




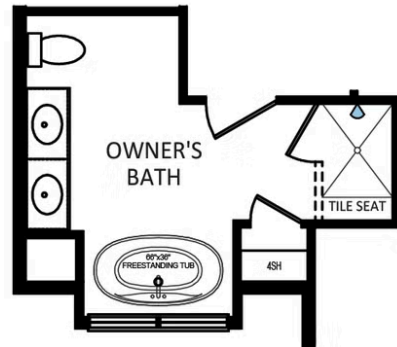
OPTIONAL
GOURMET KITCHEN



OPTIONAL MORNING ROOM



OPTIONAL OWNER'S BATH
SERENITY BATH PACKAGE



OPTIONAL OWNER'S BATH
LUXURY BATH PACKAGE

FIRST LEVEL OPTIONS

Have Questions? Ask...

KELLY

(484) 772-2693 / bhmarketing@berkshomes.com

