



**3
Beds**



**2
Baths**



**2-Car
Garage**



1,420

-

**2,206
Sq. Ft.**

3 beds | 2 baths | from 1,420 sqft

The Isabella is a charming single-story new home by Berks Homes with 3 bedrooms and 2 bathrooms, and its open one-story floor plan design creates a spacious and inviting atmosphere for all homeowners. The family room seamlessly connects to the breakfast area and kitchen, making it a perfect space for relaxation and entertainment. The primary suite also offers homeowners a peaceful retreat, featuring a large walk-in closet and a private full bathroom. Two additional bedrooms, a full bathroom, and a laundry room complete this well-designed new home by Berks Homes. With options to expand the family room, choose an alternate kitchen layout, upgrade the primary bath, or finish the basement to add additional living space of 527 square feet, new homeowners have the opportunity to customize this home to suit their unique preferences and needs.

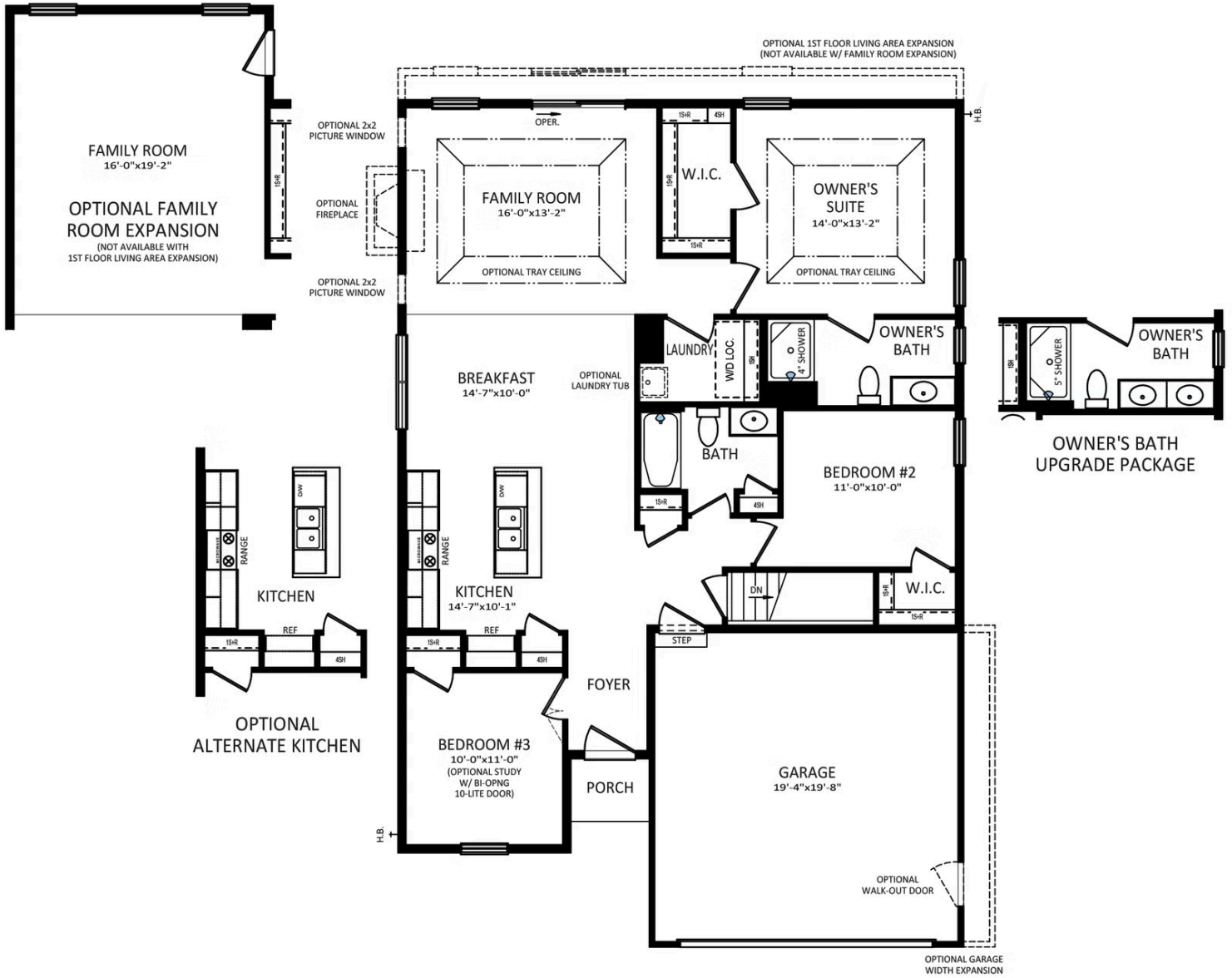


Have Questions? Ask...

KELLY

(484) 772-2693 / bhmarketing@berkshomes.com





FIRST FLOOR

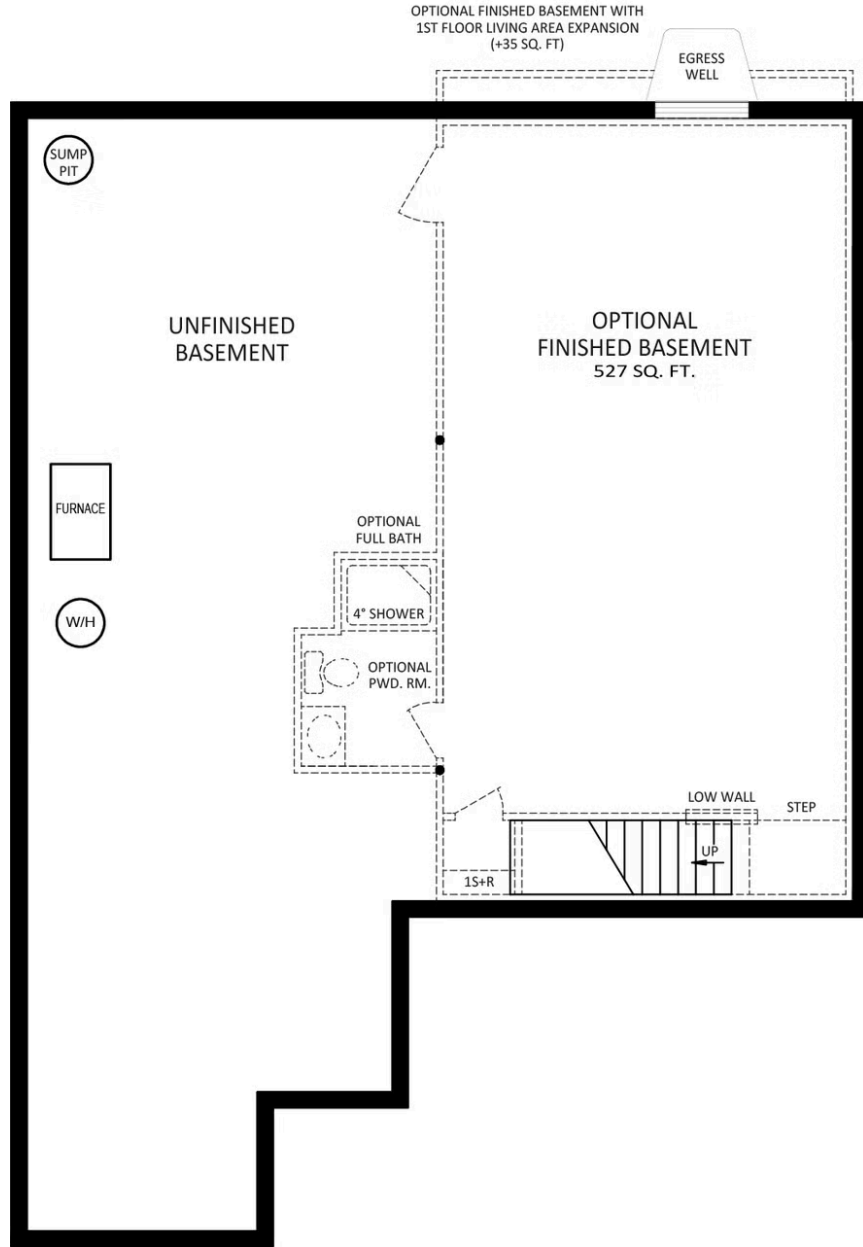
FIRST LEVEL

Have Questions? Ask...

KELLY

(484) 772-2693 / bhmarketing@berkshomes.com





FOUNDATION

LOWER LEVEL

Have Questions? Ask...

KELLY

(484) 772-2693 / bhmarketing@berkshomes.com

