



AVAILABLE IN 1 COMMUNITIES
Townes of Hampden



**3
Beds**



**2.5
Baths**



**2-Car
Garage**



**1,769
-
2,588
Sq. Ft.**

The Lilac is a stylish 3-bedroom, 2.5-bathroom townhome with an open floor plan—perfect for those looking for the best functional living. The main level features a family room, breakfast area, and kitchen that seamlessly flow together, creating a central living space for the entire family. Off the kitchen, the entry area includes stairs that lead to the second floor, a powder room, and access to the sizable 2-car garage. Upstairs, the primary suite boasts a walk-in closet and a private full bath, providing a comfortable, relaxing retreat. Two additional bedrooms and a full bath complete the second floor, offering ample space for family members or guests.

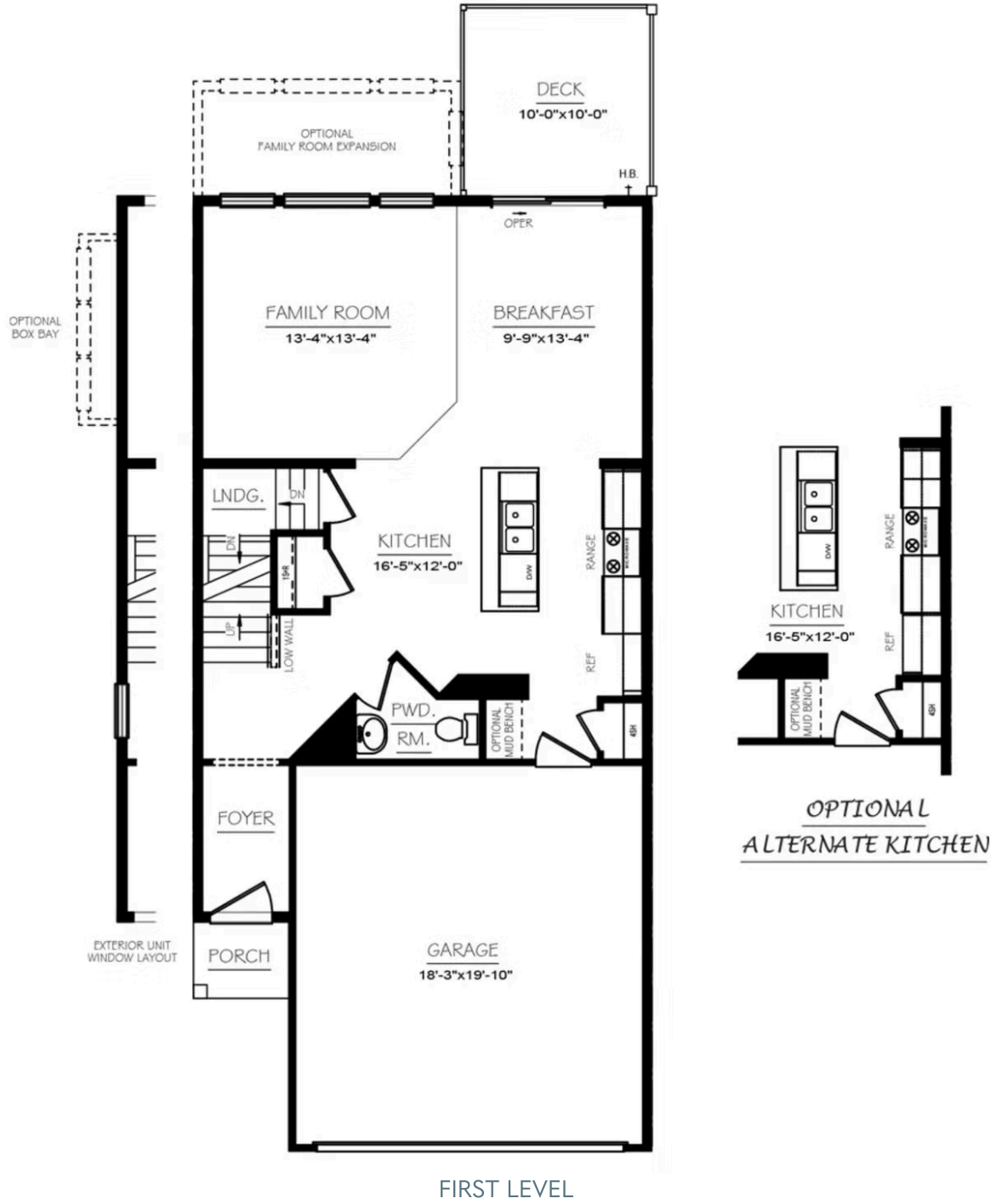


Have Questions? Ask...

KELLY

(484) 772-2693 / bhmarketing@berkshomes.com



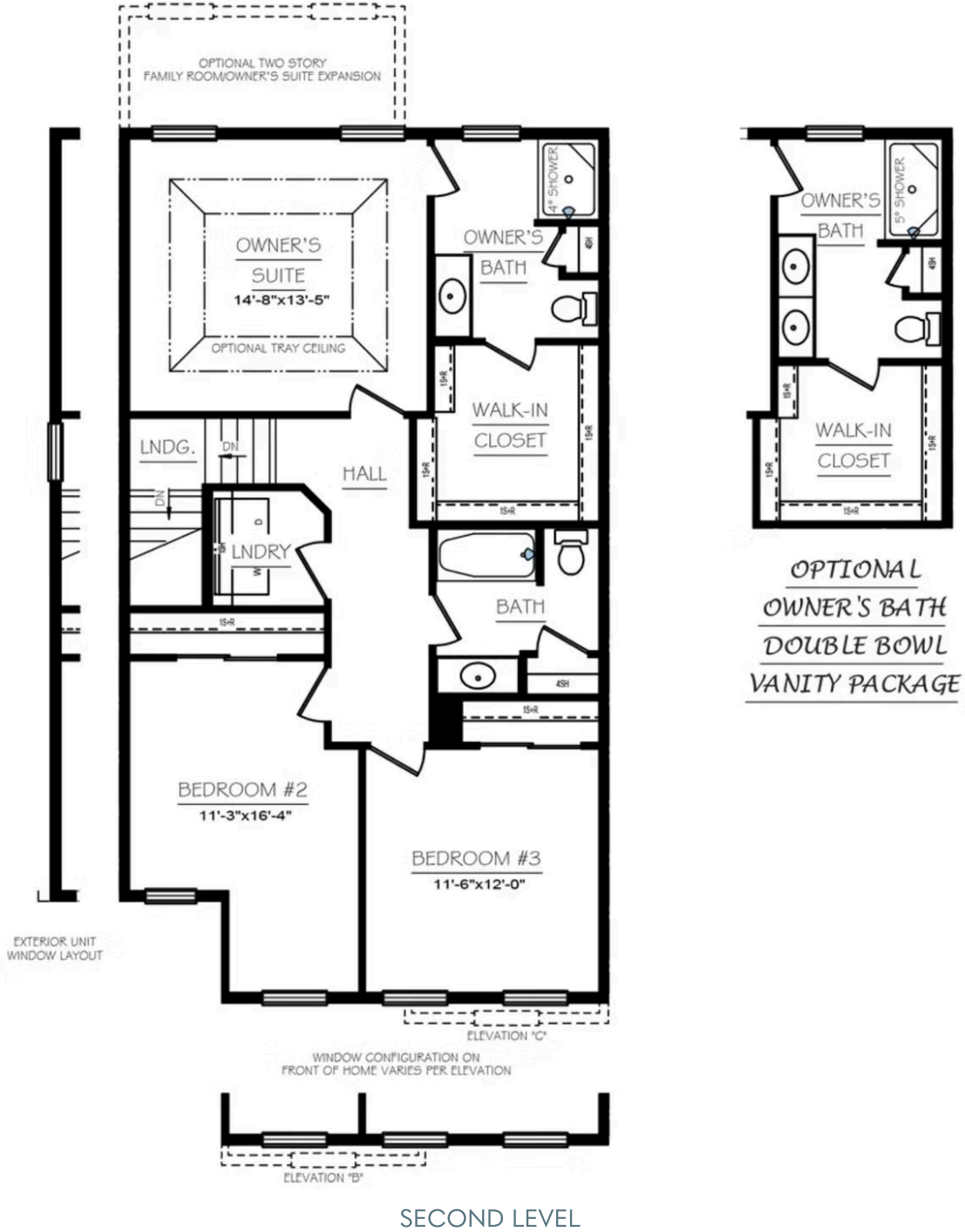


Have Questions? Ask...

KELLY

(484) 772-2693 / bhmarketing@berkshomes.com



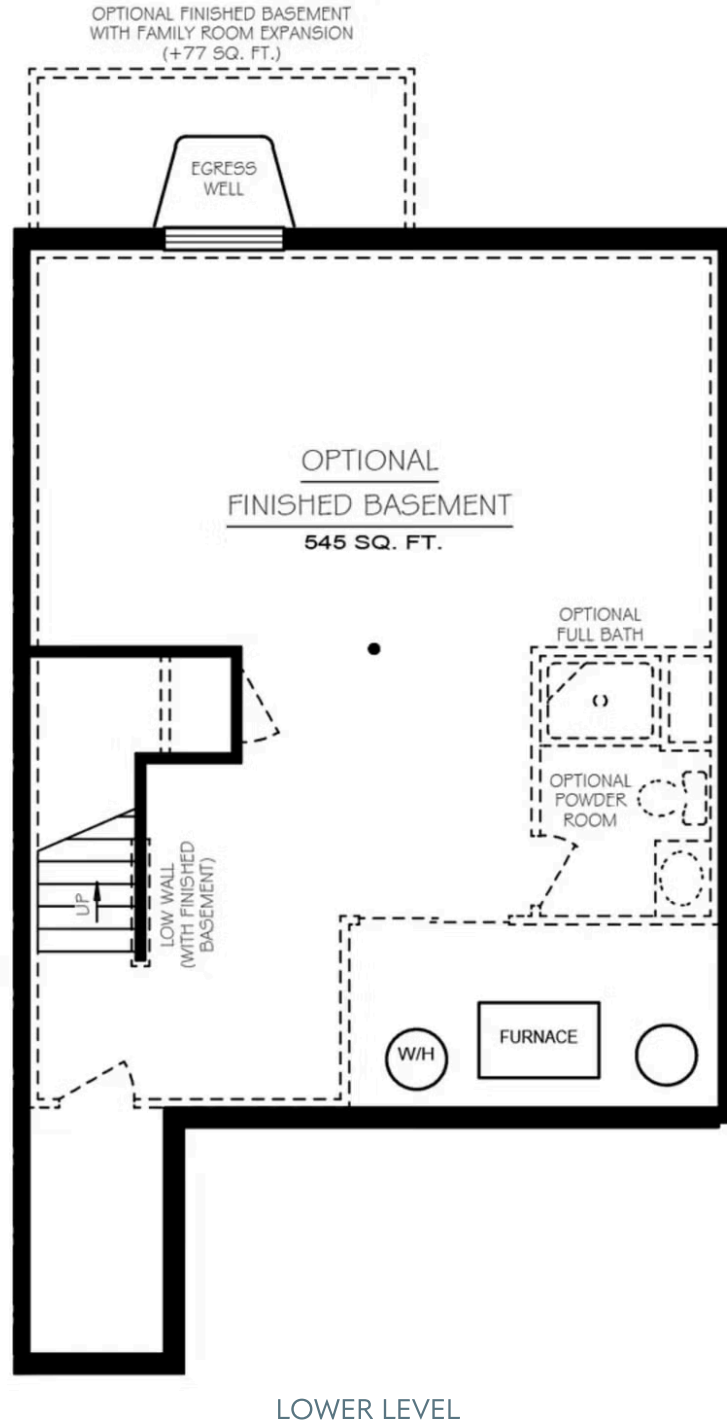


Have Questions? Ask...

KELLY

(484) 772-2693 / bhmarketing@berkshomes.com



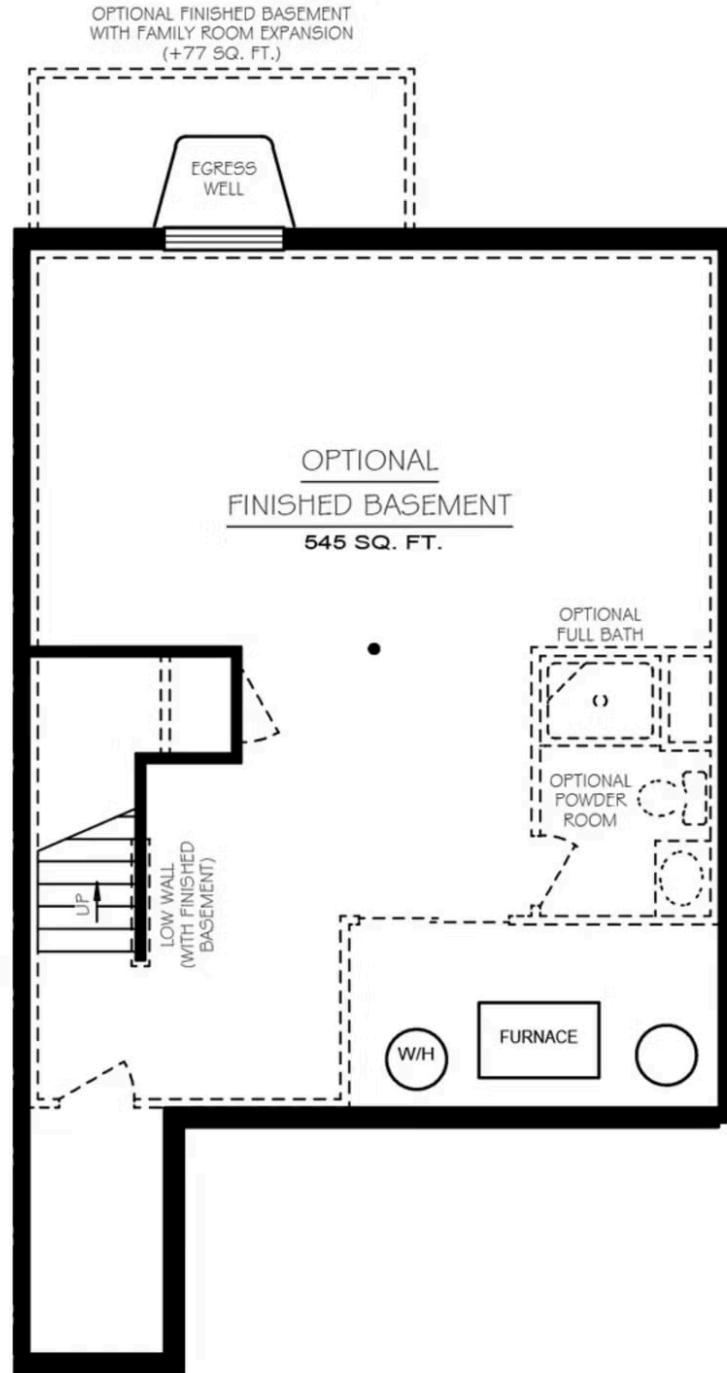


Have Questions? Ask...

KELLY

(484) 772-2693 / bhmarketing@berkshomes.com





OPT FINISHED LOWER LEVEL

Have Questions? Ask...

KELLY

(484) 772-2693 / bhmarketing@berkshomes.com

