



AVAILABLE IN 2 COMMUNITIES
Logan Greene Townhomes
Horse Farm Court



**3
Beds**



**2.5
Baths**



**2-Car
Garage**



**1,612
-
2,158
Sq. Ft.**

The Lily is a stylish 3-bedroom, 2.5-bathroom townhome with an open floor plan designed for functional, modern living. The main level features a family room, breakfast area, and kitchen that flow seamlessly together, creating a central gathering space for everyday life. Off the kitchen, the entry area includes stairs that lead to the second floor, a powder room, and access to the spacious 2-car garage. Upstairs, the primary suite includes a walk-in closet and a private full bath, offering a comfortable and relaxing retreat. Two additional bedrooms, a full bath, and a conveniently located laundry room complete the second floor, providing both comfort and practicality for today's lifestyle.



Have Questions? Ask...

KELLY

(484) 772-2693 / bhmarketing@berkshomes.com



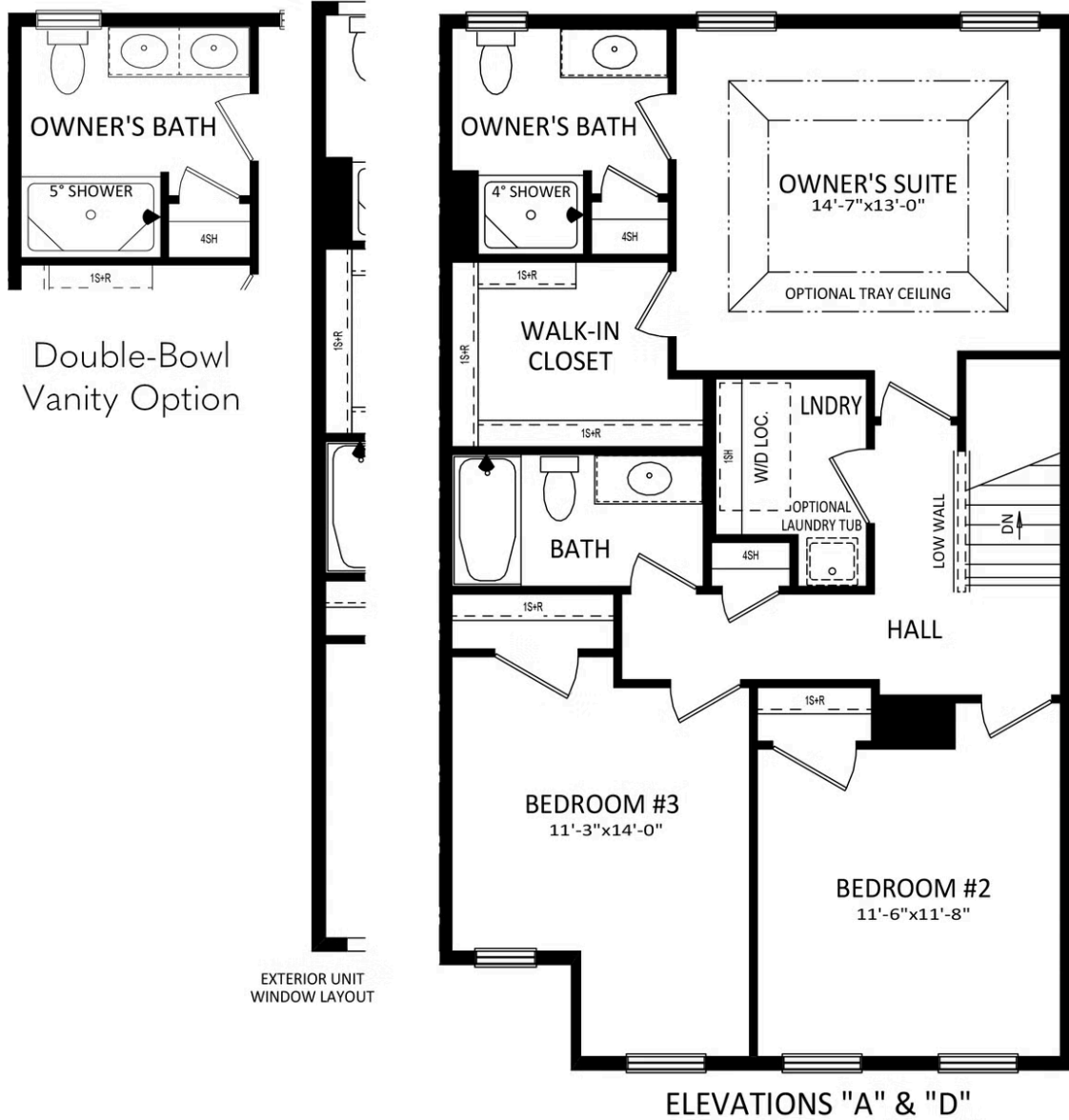


Have Questions? Ask...

KELLY

(484) 772-2693 / bhmarketing@berkshomes.com





SECOND LEVEL

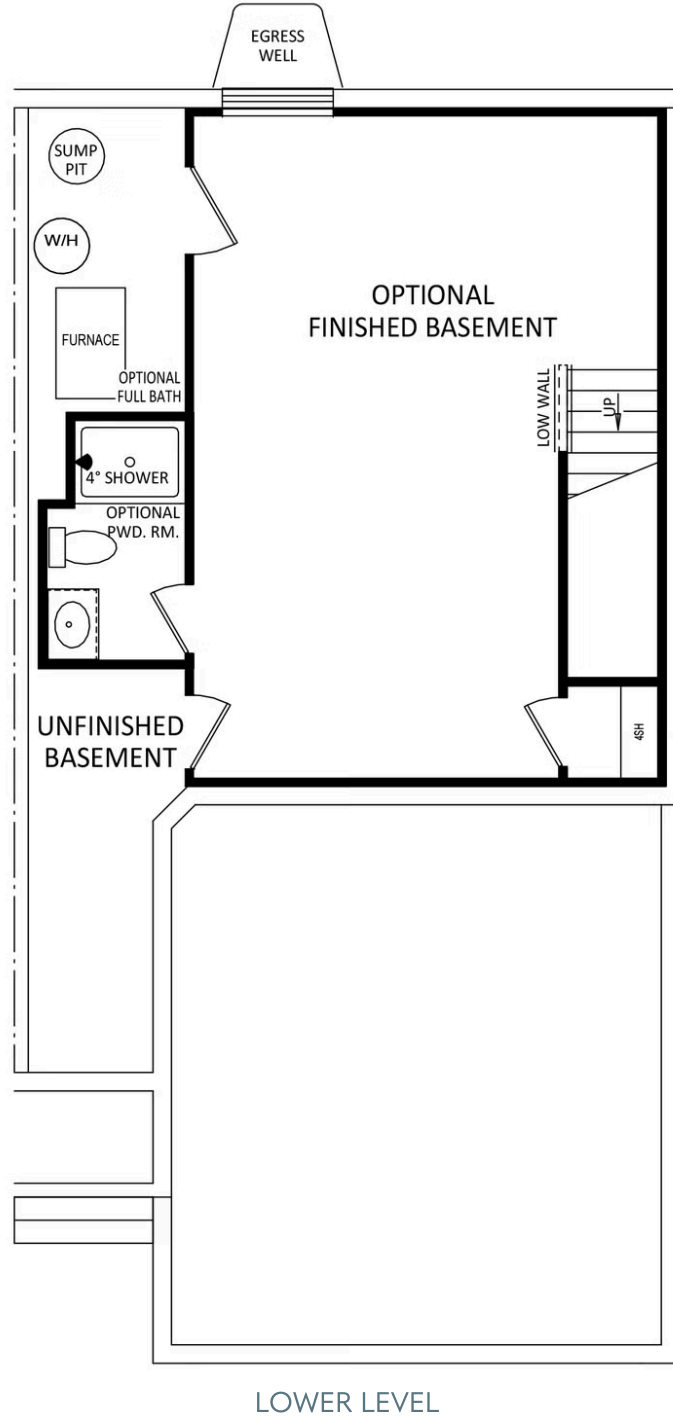


Have Questions? Ask...

KELLY

(484) 772-2693 / bhmarketing@berkshomes.com





Have Questions? Ask...

KELLY

(484) 772-2693 / bhmarketing@berkshomes.com

