



AVAILABLE IN 1 COMMUNITIES  
**Elizabeth Village**



**3  
Beds**



**2.5  
Baths**



**2-Car  
Garage**



**1,763  
-  
2,677  
Sq. Ft.**

Welcome to the Magnolia — a thoughtfully designed floorplan that balances space, flow, and everyday function. As you enter, you’re greeted by a foyer with a powder room to the side and stairs leading to the upper level. Moving forward, the home opens into a spacious kitchen that seamlessly connects to the family room, creating an open and inviting main living area. Just off the kitchen is the laundry room, and beyond the family room is the primary suite, set apart for added privacy and convenience. Upstairs, you’ll find a versatile loft space—perfect for relaxing, working, or gathering—along with two additional bedrooms and a full hall bath. With its efficient layout and open-concept design, the Magnolia is built for how you live today.

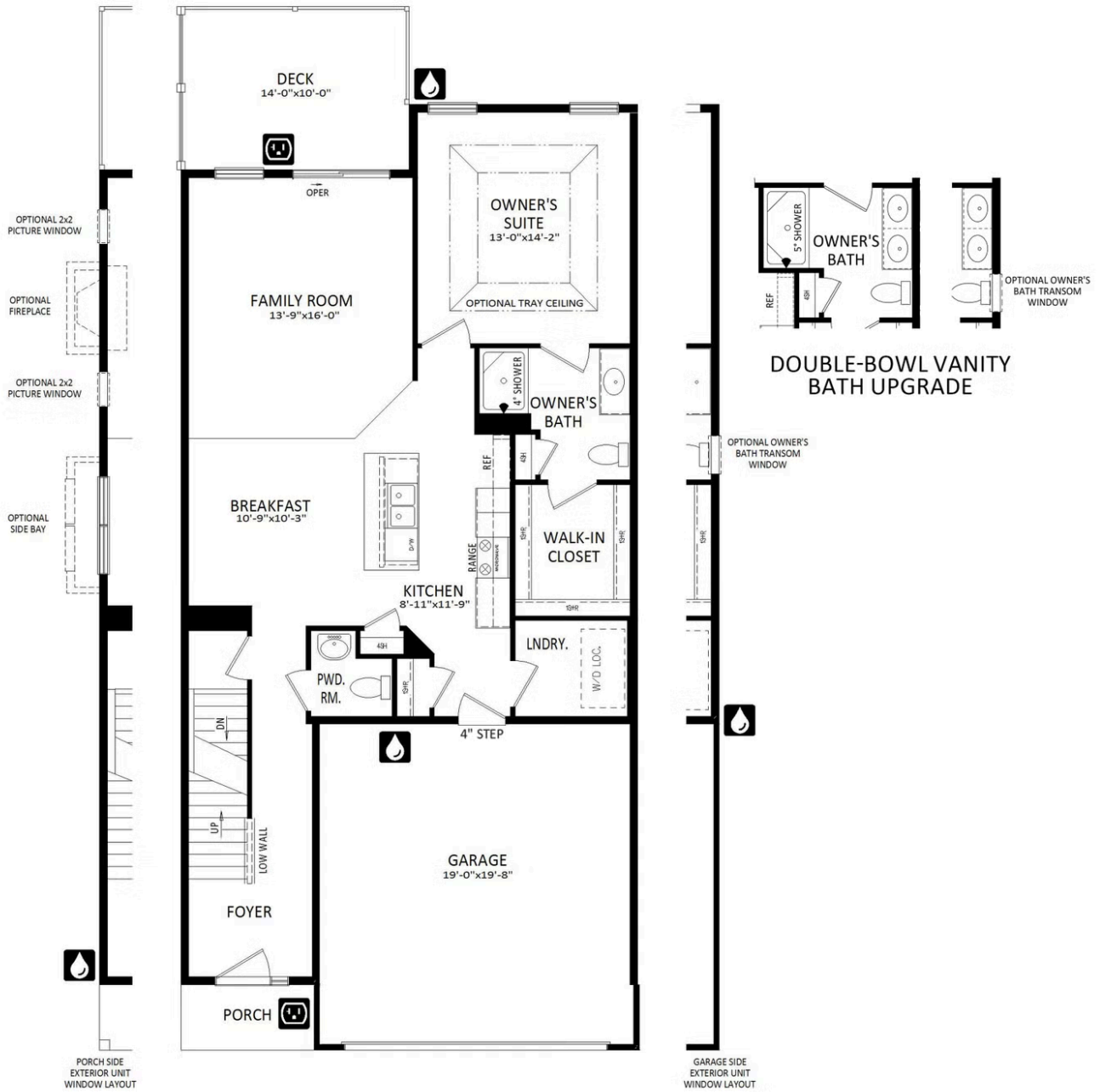


**Have Questions? Ask...**

**KELLY**

(484) 772-2693 / [bhmarketing@berkshomes.com](mailto:bhmarketing@berkshomes.com)





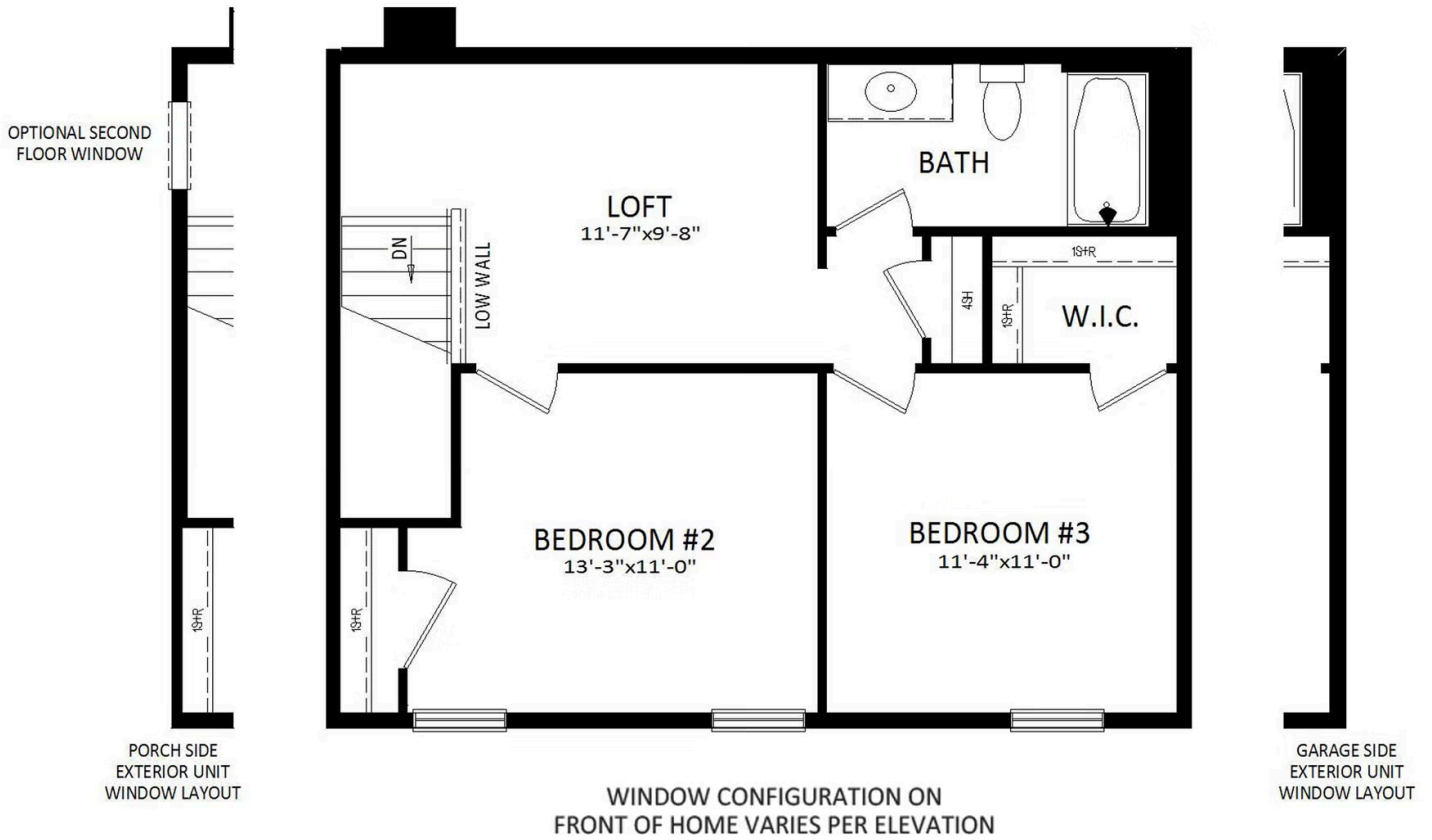
FIRST LEVEL

Have Questions? Ask...

KELLY

(484) 772-2693 / bhmarketing@berkshomes.com





## SECOND LEVEL

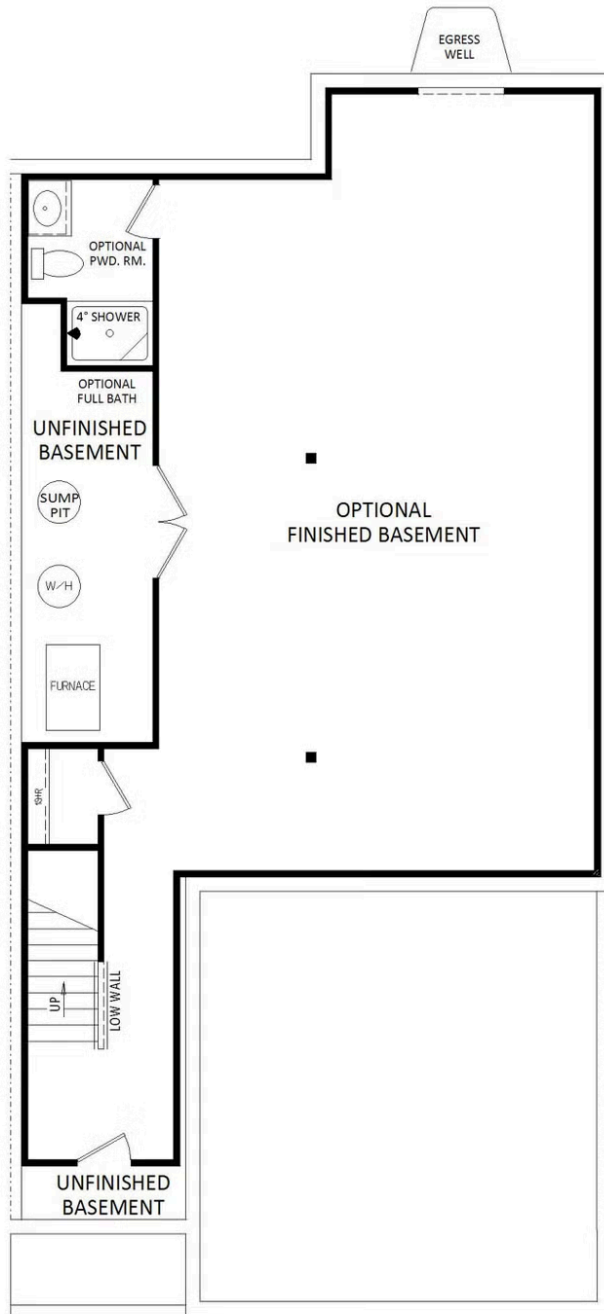


**Have Questions? Ask...**

**KELLY**

(484) 772-2693 / [bhmarketing@berkshomes.com](mailto:bhmarketing@berkshomes.com)





LOWER LEVEL



**Have Questions? Ask...**

KELLY

(484) 772-2693 / [bhmarketing@berkshomes.com](mailto:bhmarketing@berkshomes.com)

