

Mayberry Slab



**3
Beds**



**2.5
Baths**



**1-Car
Garage**



**1,181 -
1,374
Sq. Ft.**

Welcome to the Mayberry, a 3-bedroom, 2.5-bathroom townhome spanning 1181 square feet. Step into an open-concept layout featuring a sleek kitchen with optional upgrades and a cozy breakfast area opening to a private deck. Upstairs, unwind in the spacious primary suite that flows into a private bath and walk-in closet. Two additional bedrooms offer versatility and comfort, while a convenient 2nd-level laundry area simplifies chores. With the option to finish the basement or upgrade the primary bath, you can create a custom space to suit your needs. Plus, enjoy secure parking and storage in the one-car garage.

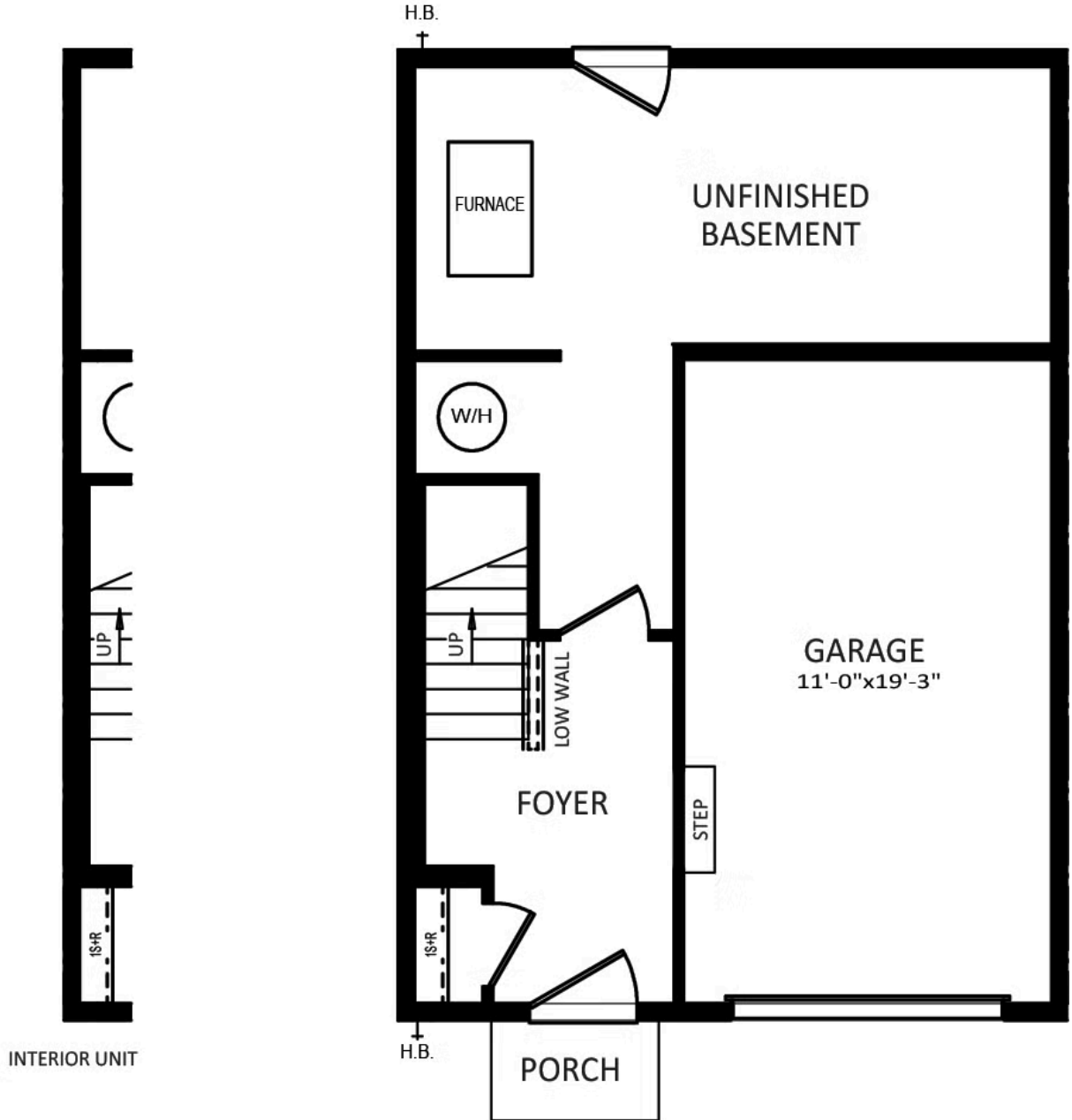


Have Questions? Ask...

KELLY

(484) 772-2693 / bhmarketing@berkshomes.com





LOWER LEVEL

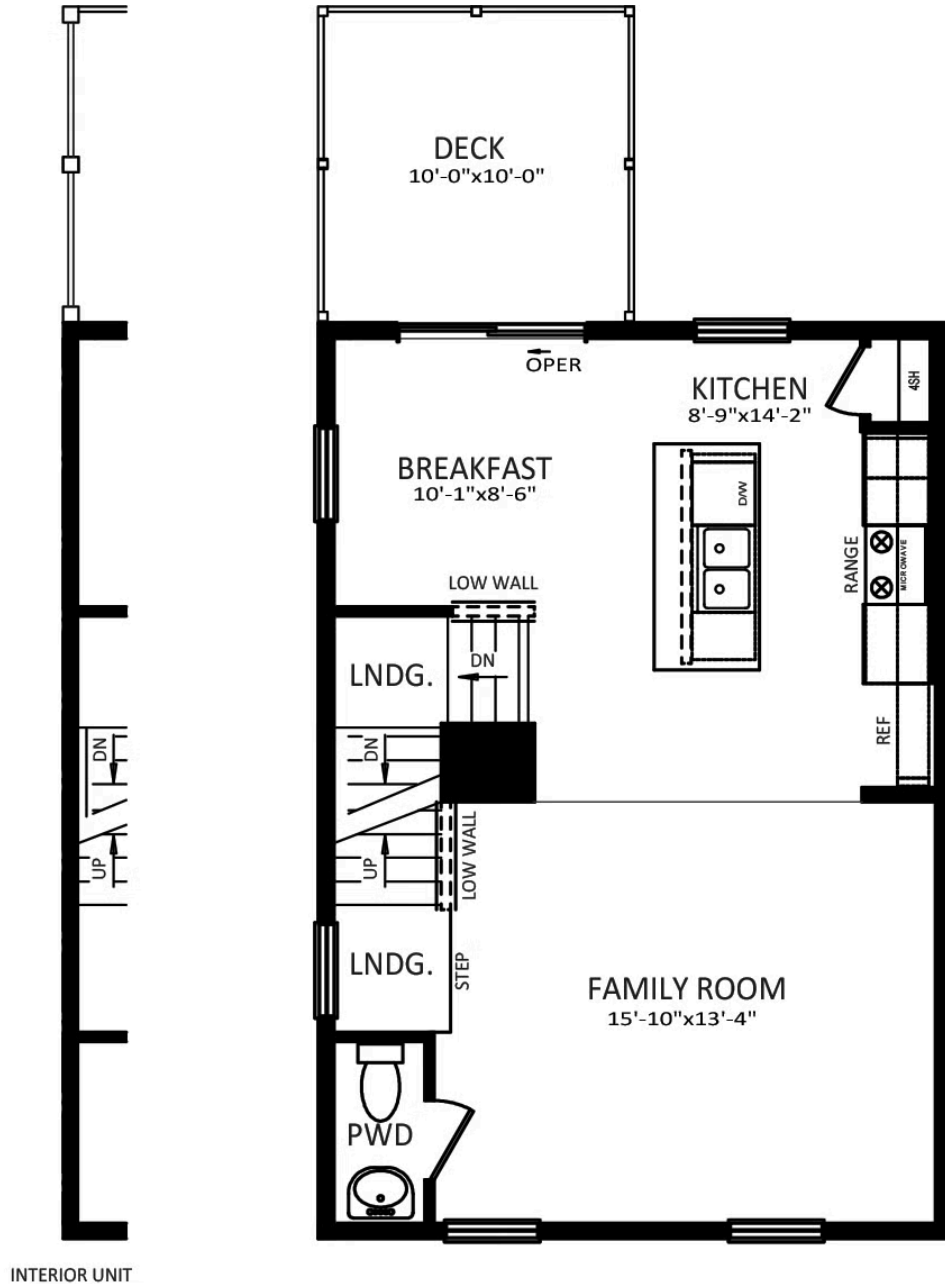
LOWER LEVEL

Have Questions? Ask...

KELLY

(484) 772-2693 / bhmarketing@berkshomes.com





INTERIOR UNIT

FIRST FLOOR

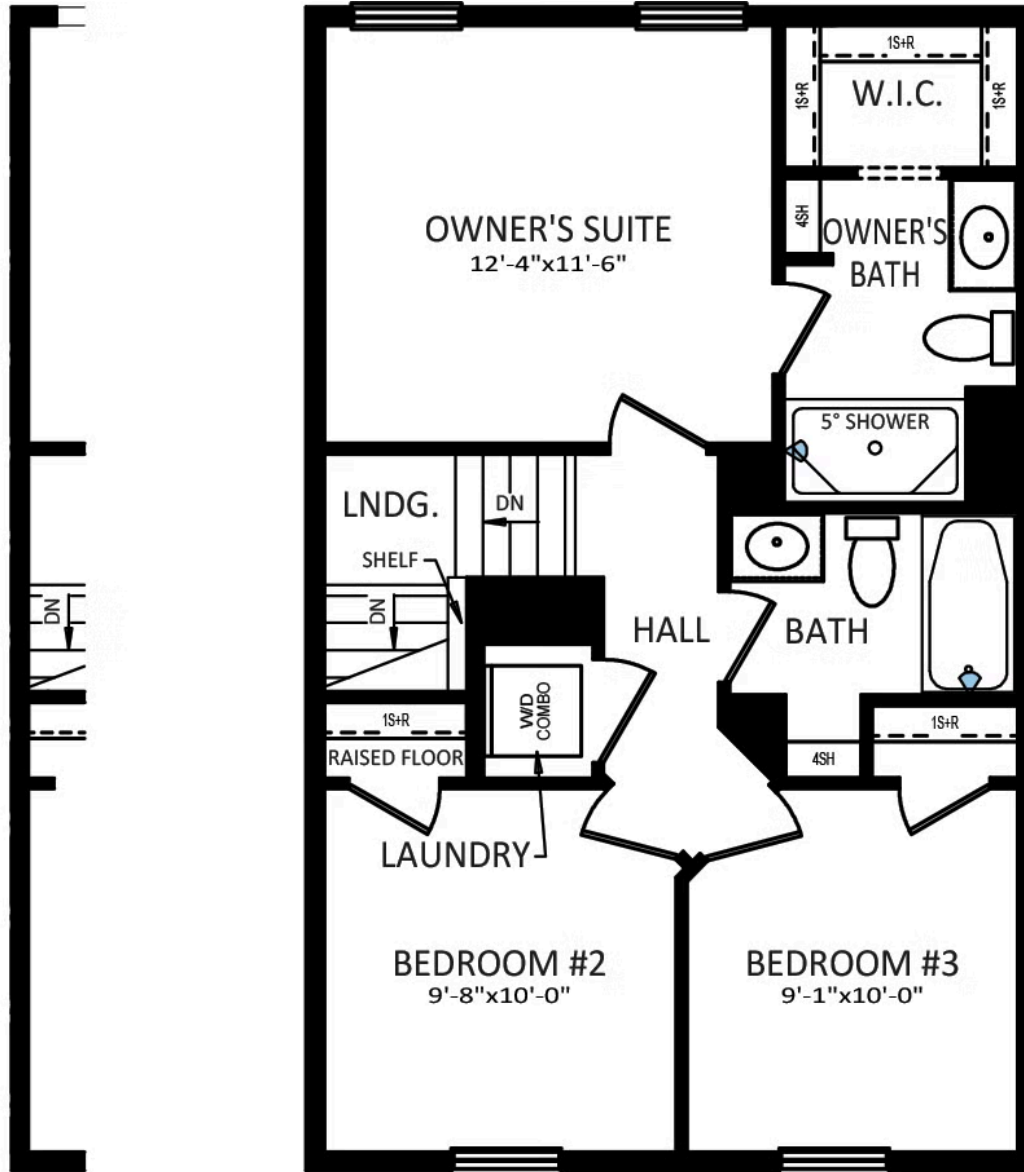
FIRST LEVEL

Have Questions? Ask...

KELLY

(484) 772-2693 / bhmarketing@berkshomes.com





INTERIOR UNIT

SECOND FLOOR

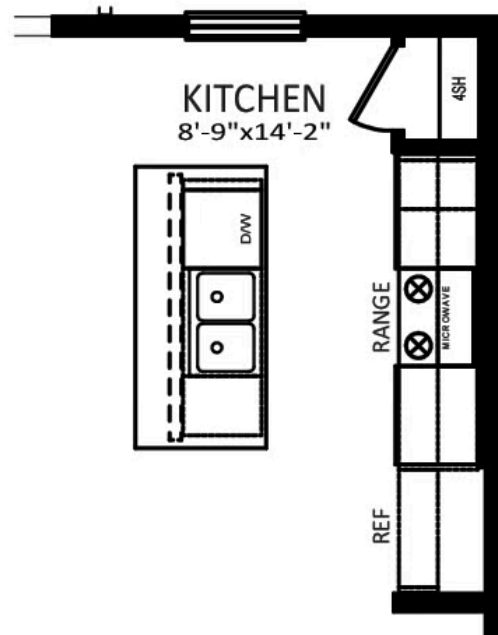
SECOND LEVEL

Have Questions? Ask...

KELLY

(484) 772-2693 / bhmarketing@berkshomes.com





OPTIONAL
ALTERNATE KITCHEN

FIRST LEVEL OPTIONS

Have Questions? Ask...

KELLY

(484) 772-2693 / bhmarketing@berkshomes.com

