

QUICK MOVE-IN

FLOORPLAN

Barberry

COMMUNITY

Logan Greene Townhomes



**3
Beds**



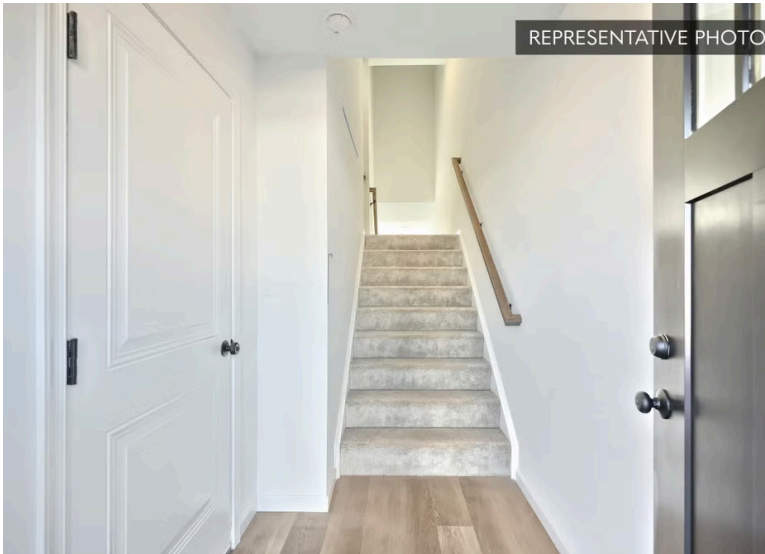
**2.5
Baths**



**2-Car
Garage**



**1528
Sq. Ft.**



This spacious 3-story home includes thoughtful spaces on every level and upgrades that make daily life feel effortless.

The main level welcomes you with an open-concept layout connecting the family room, breakfast area, and kitchen. The upgraded kitchen is the heart of it all, featuring an island, quartz countertops, tile backsplash, upgraded cabinetry, stainless steel appliances, and recessed lighting. Engineered vinyl plank flooring flows throughout the main living areas, adding warmth and durability underfoot. A powder room completes the first floor. Step outside to the 10' x 10' deck, perfect for morning coffee or evening unwinding.

...

Bellefonte Area School District

Sales Office Hours

Open Wednesday - Saturday 10:00 am - 5:00 pm | Tuesdays By Appointment Only | Closed Sundays and Mon



Have Questions? Ask...
KELLY

(484) 772-2693 / bhmarketing@berkshomes.com





ELEVATIONS "A" & "B"

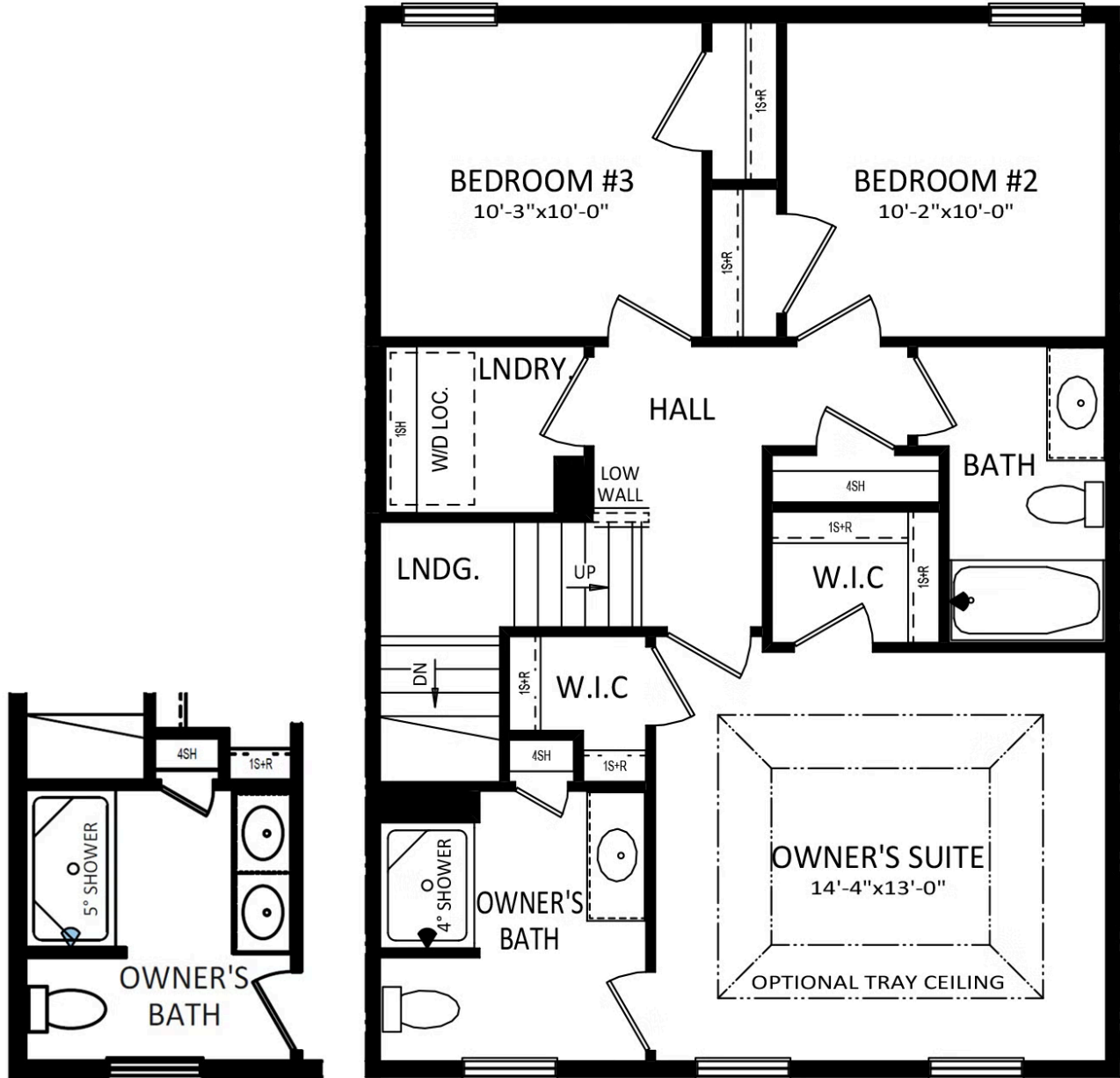
FIRST LEVEL



Have Questions? Ask...
KELLY

(484) 772-2693 / bhmarketing@berkshomes.com





DOUBLE-BOWL
VANITY PACKAGE

ELEVATIONS "A" & "B"

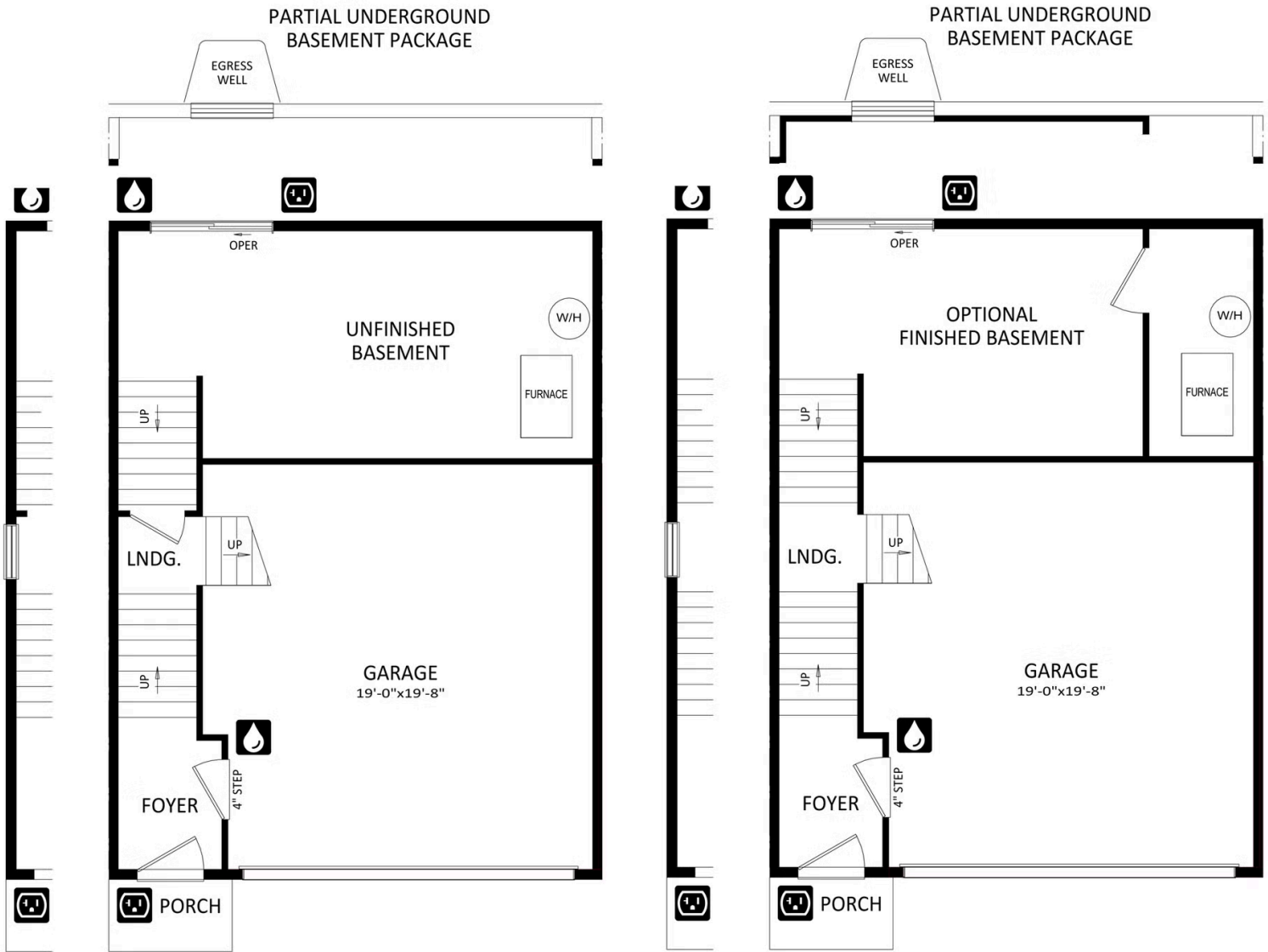
SECOND LEVEL



Have Questions? Ask...
KELLY

(484) 772-2693 / bhmarketing@berkshomes.com





LOWER LEVEL



Have Questions? Ask...
KELLY

(484) 772-2693 / bhmarketing@berkshomes.com

