

QUICK MOVE-IN

COMMUNITY
Logan Greene Townhomes



**3
Beds**



**2.5
Baths**



**2-Car
Garage**



**1937
Sq. Ft.**



This thoughtfully designed two-story home offers the kind of flexible, functional layout that fits real life, with upgrades that make every room feel intentional.

The main floor flows naturally from a welcoming foyer into an open family room and breakfast area, with a living room expansion that gives you even more room to spread out. At the heart of it all, an upgraded kitchen features a center island, quartz countertops, tile backsplash, upgraded cabinetry, stainless steel appliances, under-cabinet lighting, and recessed lighting. Durable engineered vinyl plank flooring runs throughout the main floor and all bathrooms, giving you a clean, cohesive look that holds up to everyday life.

Upstairs, the Owner's Suite features recessed lighting, and an Owner's Bath featuring a double vanity and a...

Bellefonte Area School District

Sales Office Hours

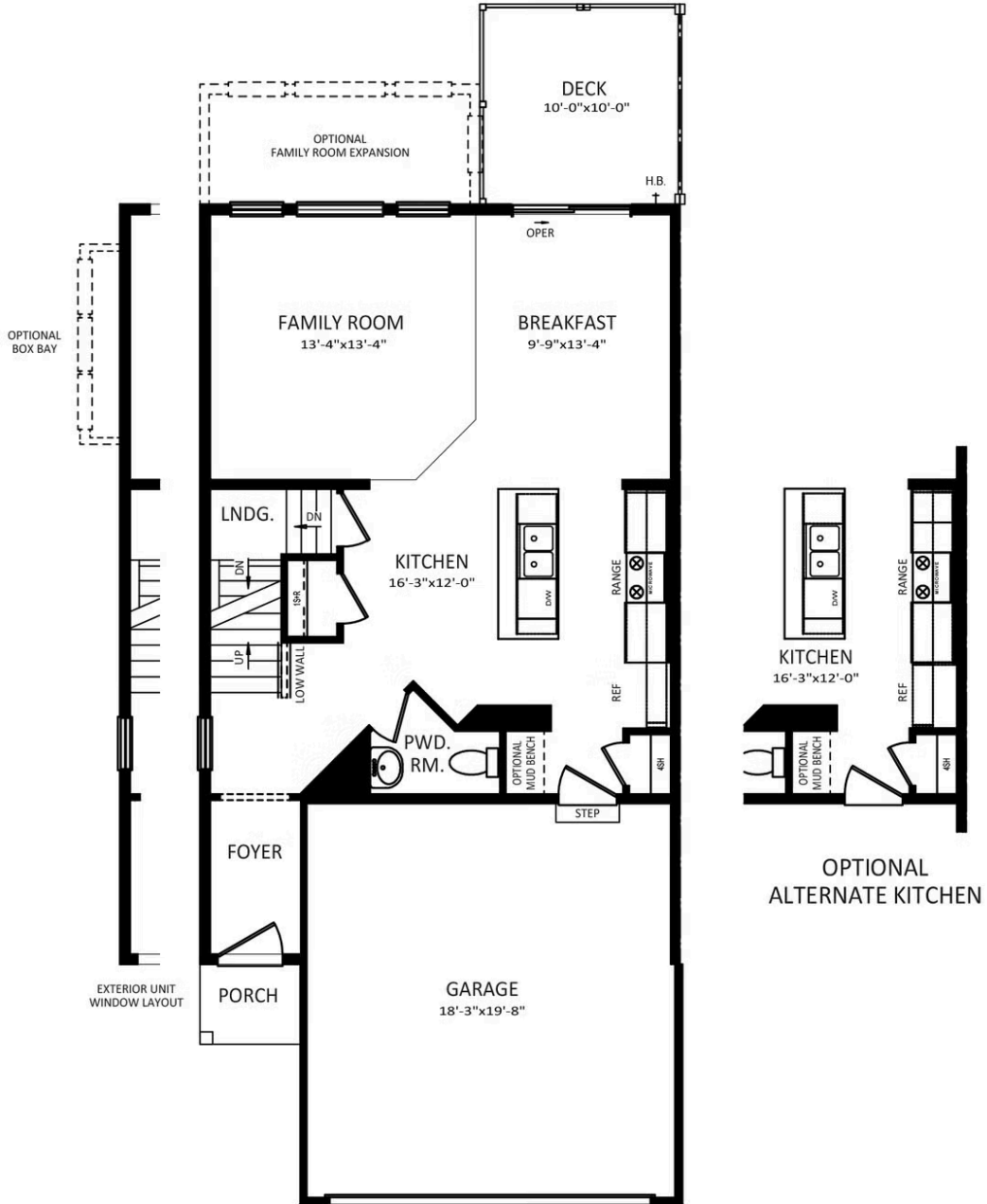
Open Wednesday - Saturday 10:00 am - 5:00 pm | Tuesdays By Appointment Only | Closed Sundays and Mon



Have Questions? Ask...
KELLY

(484) 772-2693 / bhmarketing@berkshomes.com





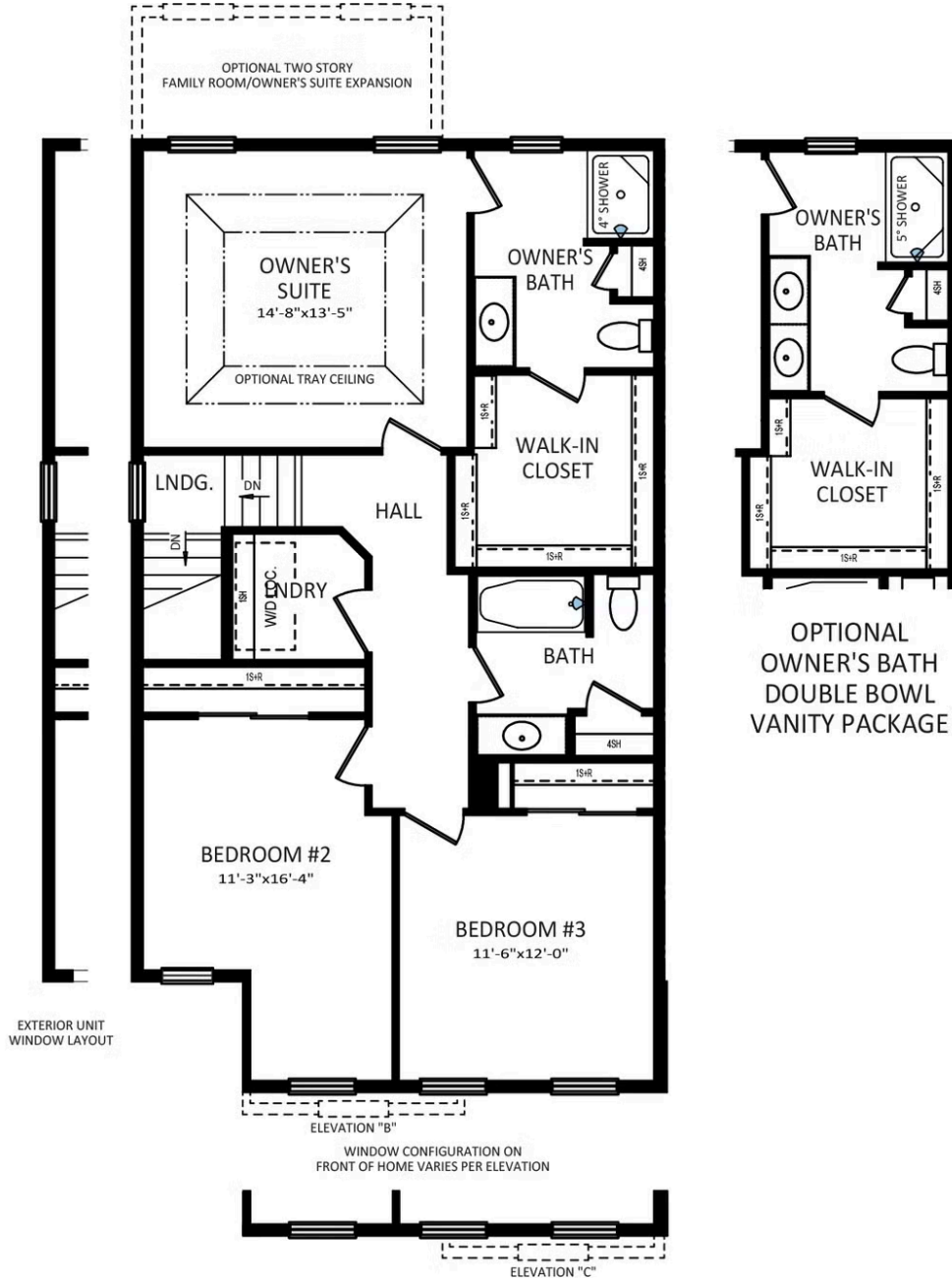
FIRST FLOOR



Have Questions? Ask...
KELLY

(484) 772-2693 / bhmarketing@berkshomes.com





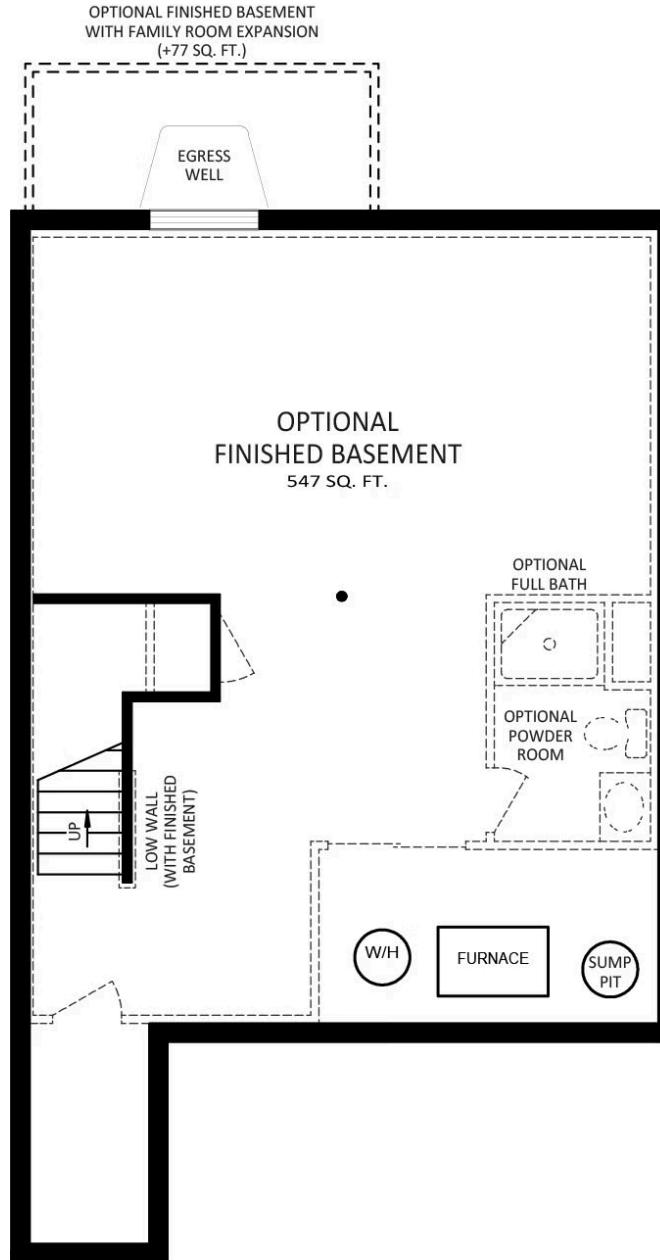
SECOND FLOOR



Have Questions? Ask...
KELLY

(484) 772-2693 / bhmarketing@berkshomes.com





FOUNDATION



Have Questions? Ask...
KELLY

(484) 772-2693 / bhmarketing@berkshomes.com

