



COMMUNITY  
**Shady Lane Estates**

PRICED FROM  
**\$349,990**



**3  
Beds**



**2.5  
Baths**



**2-Car  
Garage**



1,763

-

**2,677  
Sq. Ft.**

The Cypress boasts an open floorplan with a spacious family room opening to a kitchen that includes an island with ample seating and a breakfast area. Enjoy one-story living in a two-story home with a first-level primary suite, a primary bath and walk-in closet, and a first-floor laundry room. The second story offers two additional bedrooms, another full bath, and a versatile loft area. Between primary bath upgrades, an alternate kitchen, or finishing the basement, there are plenty of ways to personalize the Cypress to suit your needs.

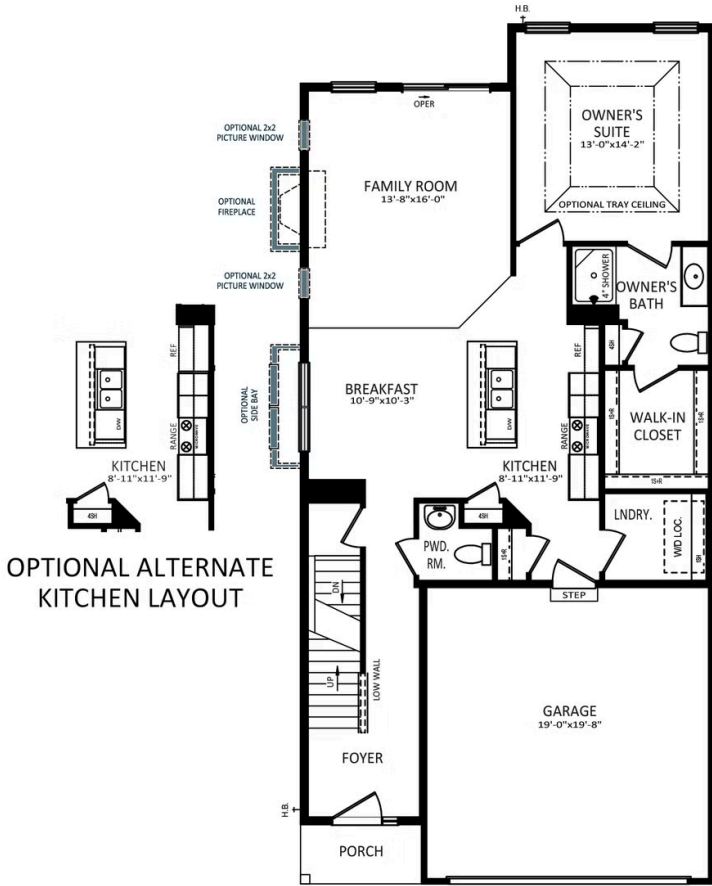


**Have Questions? Ask...**

**KELLY**

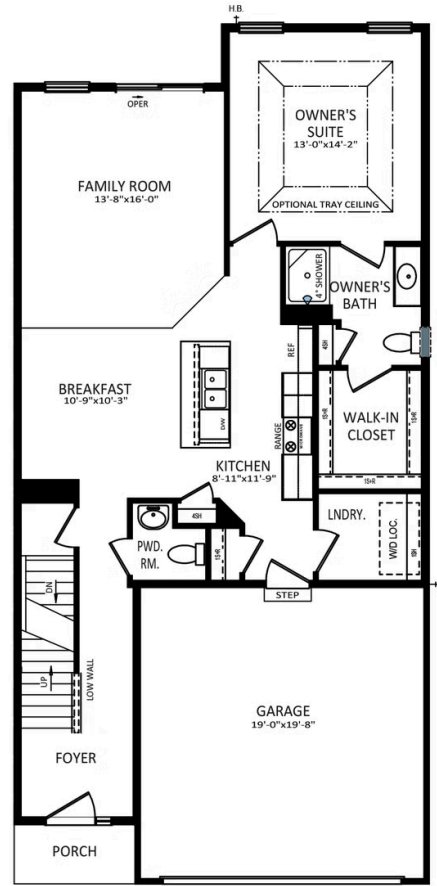
(484) 772-2693 / [bhmarketing@berkshomes.com](mailto:bhmarketing@berkshomes.com)





OPTIONAL ALTERNATE KITCHEN LAYOUT

FIRST FLOOR  
PORCH SIDE EXTERIOR



OWNER'S BATH  
DOUBLE BOWL  
VAINITY PACKAGE

FIRST FLOOR  
GARAGE SIDE EXTERIOR

FIRST LEVEL

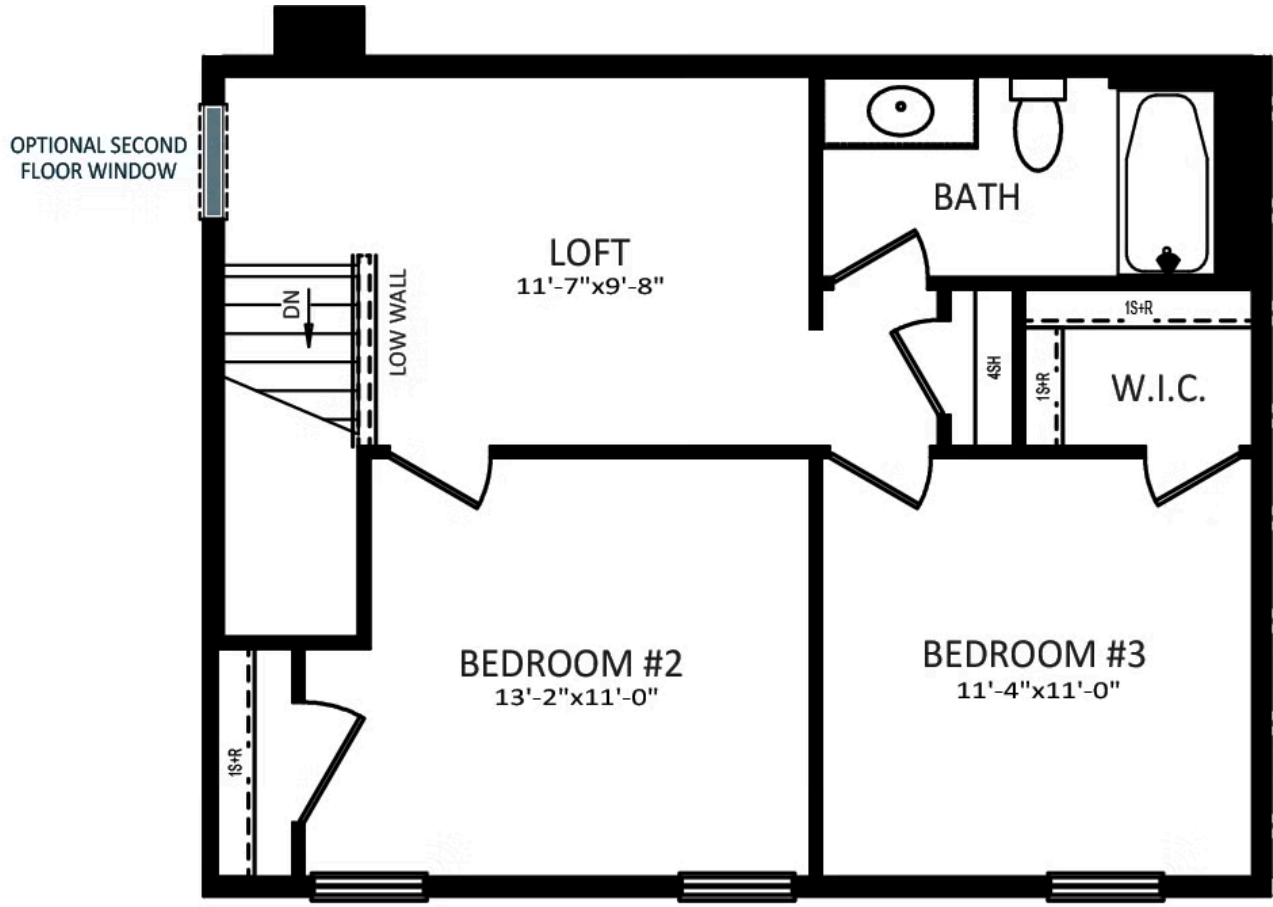


Have Questions? Ask...

KELLY

(484) 772-2693 / bhmarketing@berkshomes.com





ELEVATIONS "A" & "C"

## SECOND FLOOR



ELEVATIONS "B" & "D"

SECOND LEVEL

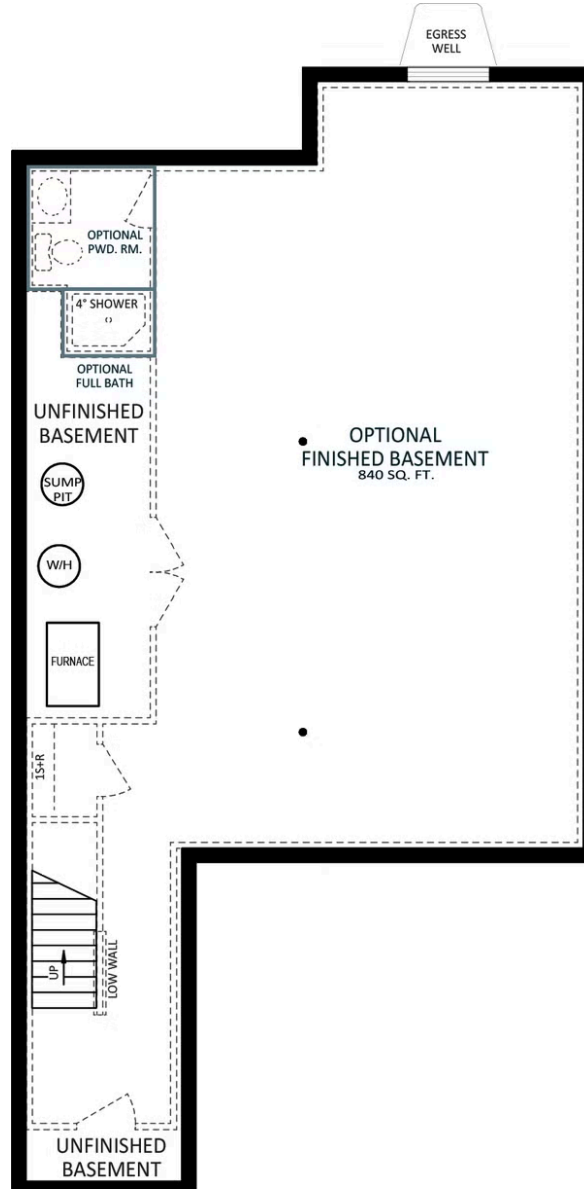


**Have Questions? Ask...**

KELLY

(484) 772-2693 / [bhmarketing@berkshomes.com](mailto:bhmarketing@berkshomes.com)





**FOUNDATION**  
LOWER LEVEL

**Have Questions? Ask...**

KELLY

(484) 772-2693 / [bhmarketing@berkshomes.com](mailto:bhmarketing@berkshomes.com)

