

UNDER CONSTRUCTION

FLOORPLAN  
**Cypress**  
COMMUNITY  
**Shady Lane Estates**



**3  
Beds**



**2.5  
Baths**



**2-Car  
Garage**



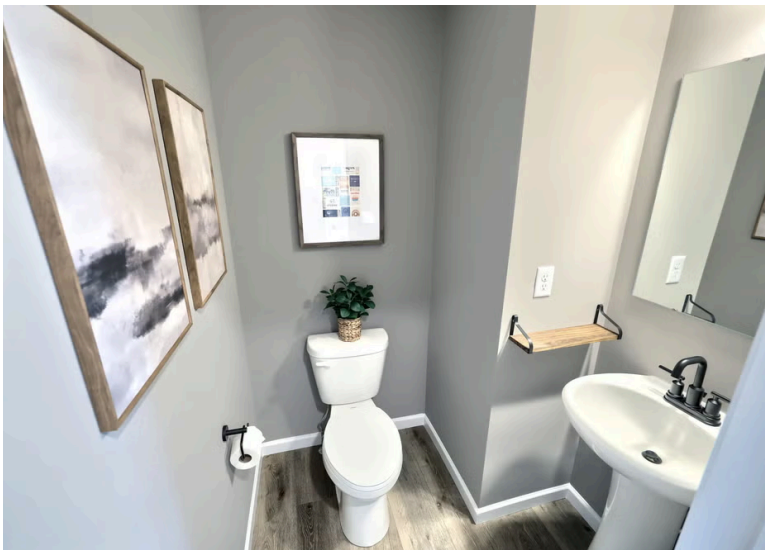
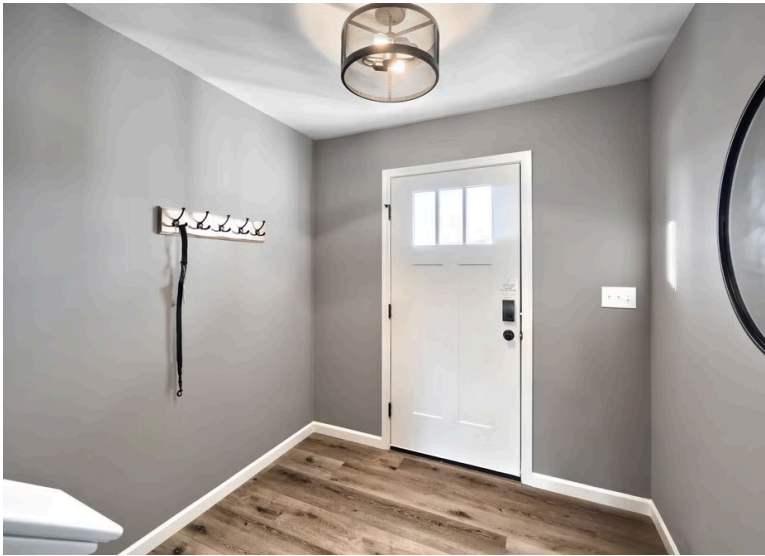
**1763  
Sq. Ft.**

The Cypress boasts an open floorplan with a spacious family room opening to a kitchen that includes an island with ample seating and a breakfast area. Enjoy one-story living in a two-story home with a first-level primary suite, a primary bath and walk-in closet, and a first-floor laundry room. The second story offers two additional bedrooms, another full bath, and a versatile loft area. Between primary bath upgrades, an alternate kitchen, or finishing the basement, there are plenty of ways to personalize the Cypress to suit your needs.

**Bellefonte Area School District**

**Sales Office Hours**

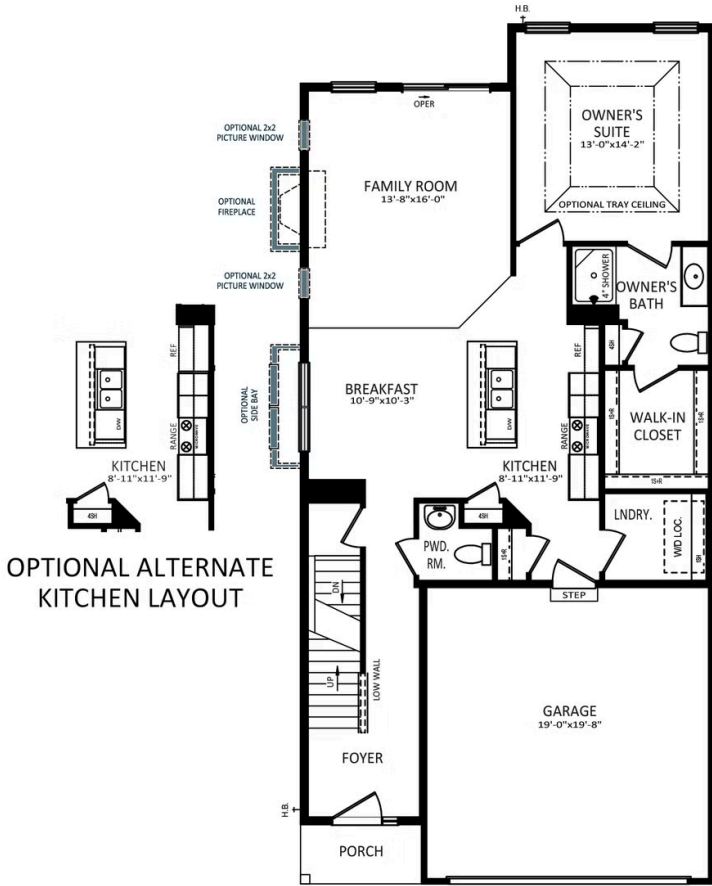
Wednesday - Saturday 10:00 am - 5:00 pm | Closed Sundays, Mondays, and Tuesdays



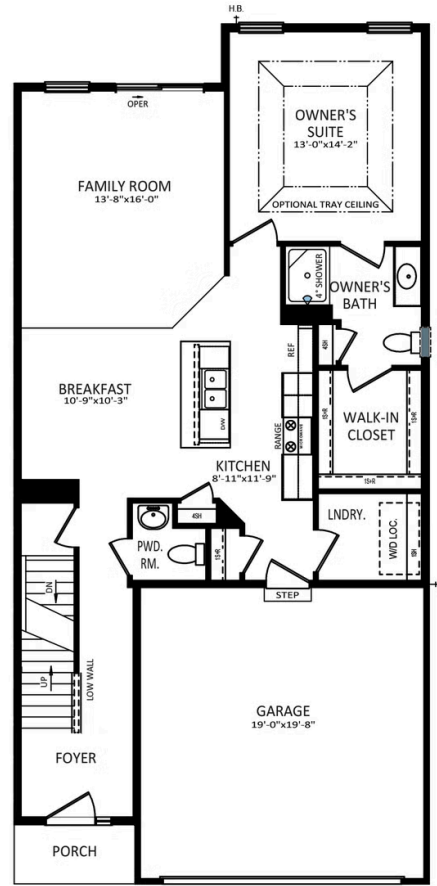
**Have Questions? Ask...**  
**KELLY**

(484) 772-2693 / [bhmarketing@berkshomes.com](mailto:bhmarketing@berkshomes.com)





**FIRST FLOOR**  
PORCH SIDE EXTERIOR



**FIRST FLOOR**  
GARAGE SIDE EXTERIOR

FIRST LEVEL

**OPTIONAL ALTERNATE KITCHEN LAYOUT**

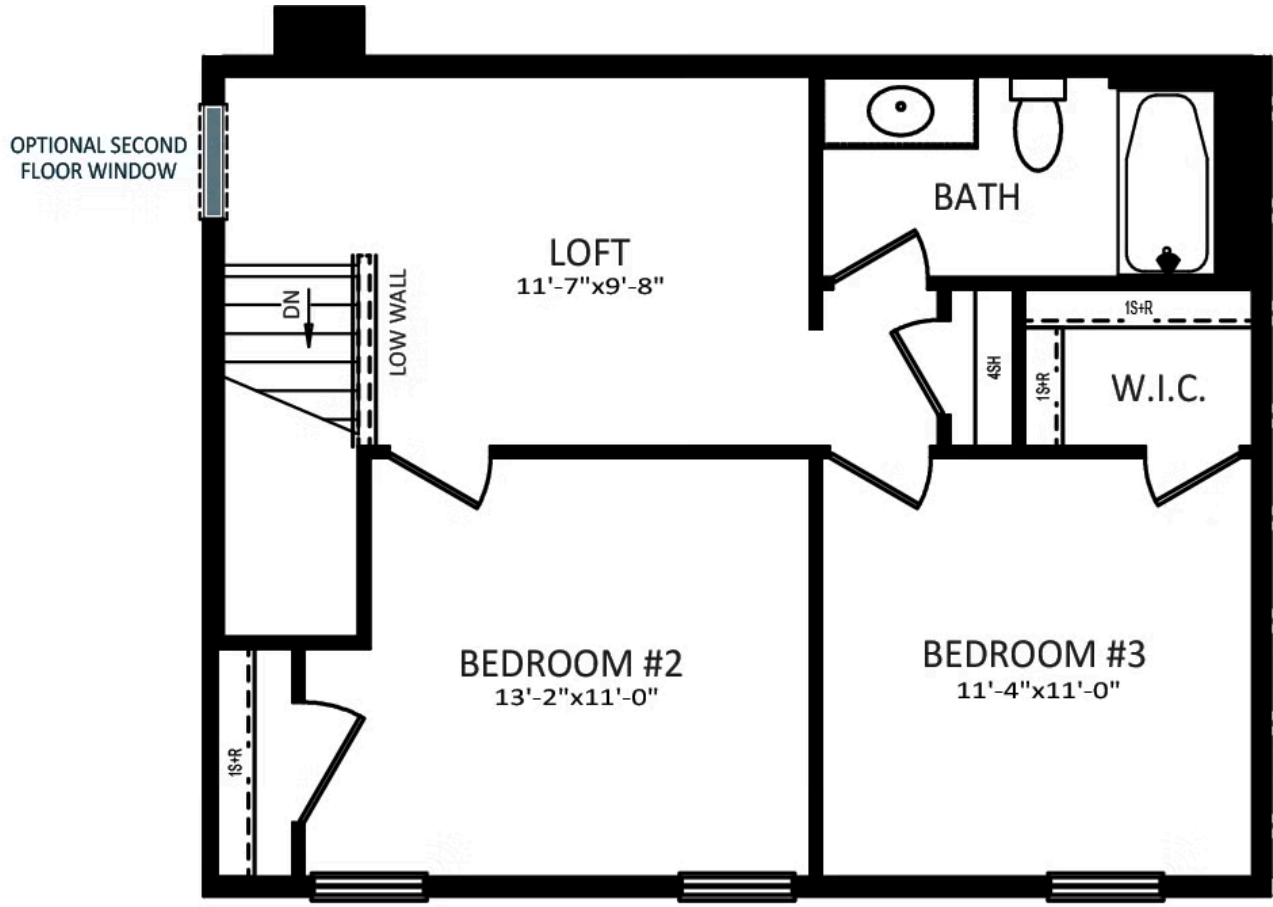
**OWNER'S BATH DOUBLE BOWL VANITY PACKAGE**



**Have Questions? Ask...**  
**KELLY**

(484) 772-2693 / [bhmarketing@berkshomes.com](mailto:bhmarketing@berkshomes.com)





ELEVATIONS "A" & "C"

## SECOND FLOOR



ELEVATIONS "B" & "D"

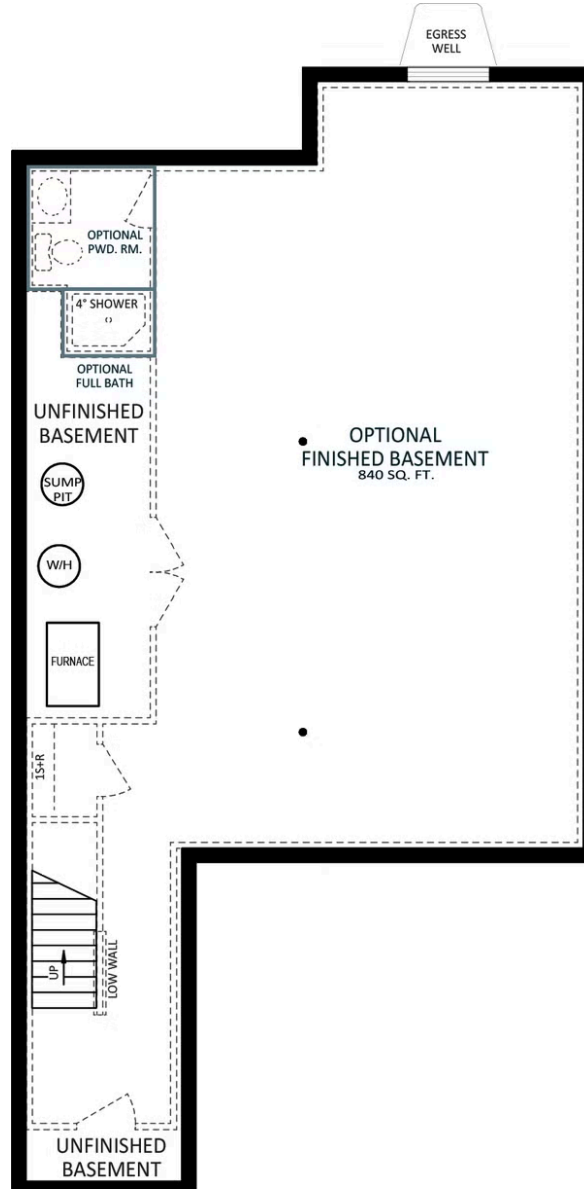
SECOND LEVEL



**Have Questions? Ask...**  
**KELLY**

(484) 772-2693 / [bhmarketing@berkshomes.com](mailto:bhmarketing@berkshomes.com)





## FOUNDATION

LOWER LEVEL



**Have Questions? Ask...**  
**KELLY**

(484) 772-2693 / [bhmarketing@berkshomes.com](mailto:bhmarketing@berkshomes.com)

