

Sweet Birch Duplex



COMMUNITY
Shady Lane Estates

PRICED FROM
\$344,990



**4
Beds**



**2.5
Baths**



**2-Car
Garage**



1,928

-

**2,668
Sq. Ft.**

Welcome to this stunning 2-story duplex home presenting 4 bedrooms and 2 1/2 baths. The Sweet Birch Duplex has a modern, open floor plan designed to maximize its living space and functionality. Walking in will feel like home at the first step into the foyer. The first floor boasts a cozy breakfast area, a kitchen with an island, a spacious family room, and a much sought-after flex room. The second level will delight you with four sizeable bedrooms, including a primary suite with a large walk-in closet and private bath. A convenient 2nd-level laundry near the bedrooms and full bath round out this level. The lower level is perfect for extra living space, including the potential for a powder room or full bath, adding even more value to your home while leaving abundant space for your storage needs.

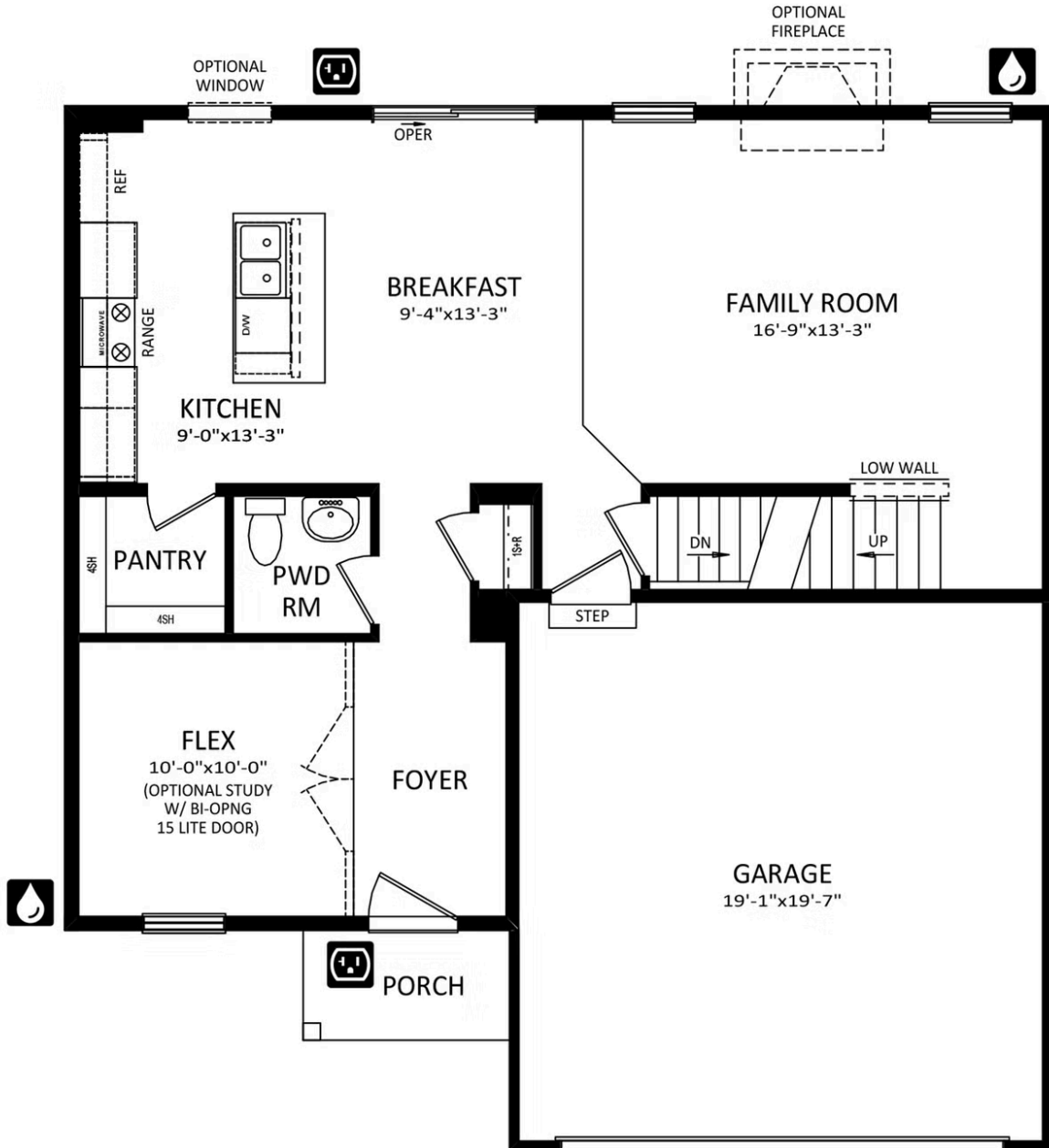


Have Questions? Ask...

KELLY

(484) 772-2693 / bhmarketing@berkshomes.com





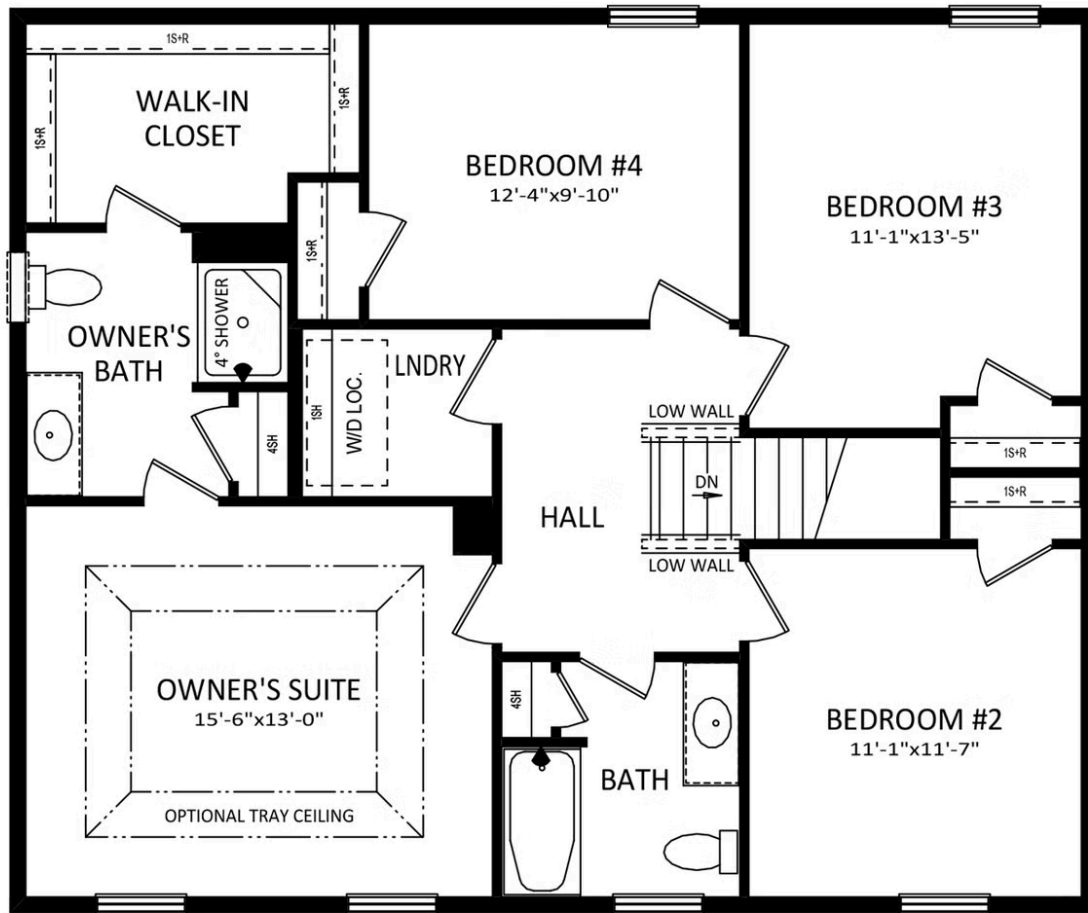
FIRST LEVEL

Have Questions? Ask...

KELLY

(484) 772-2693 / bhmarketing@berkshomes.com





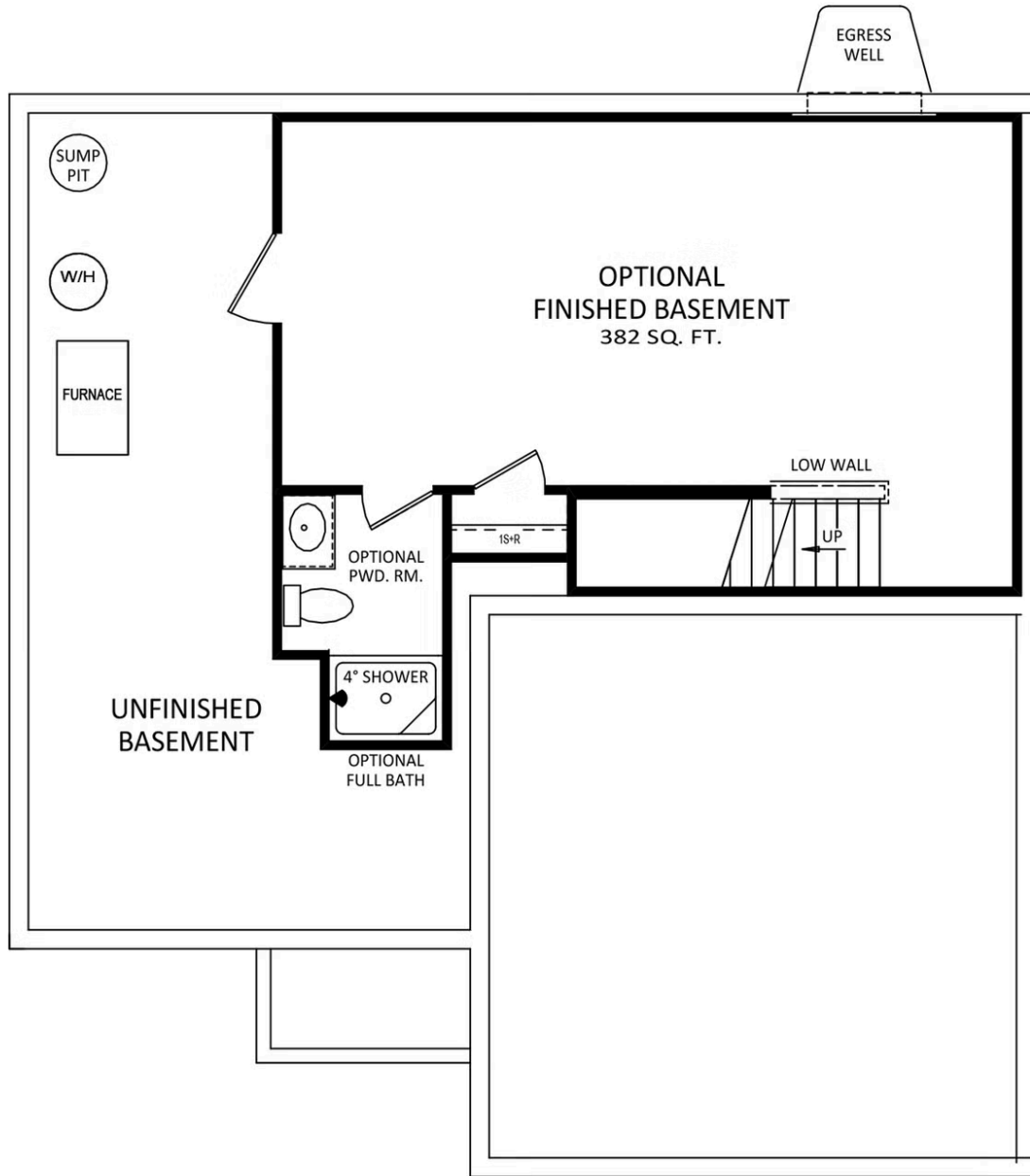
SECOND LEVEL

Have Questions? Ask...

KELLY

(484) 772-2693 / bhmarketing@berkshomes.com





LOWER LEVEL

Have Questions? Ask...

KELLY

(484) 772-2693 / bhmarketing@berkshomes.com

