

QUICK MOVE-IN

FLOORPLAN  
**Sweet Birch Duplex**  
COMMUNITY  
**Shady Lane Estates**



**4  
Beds**



**2.5  
Baths**



**2-Car  
Garage**



**2502  
Sq. Ft.**



This two-story home features a practical layout with open living spaces and well-selected upgrades throughout. The first floor is anchored by a spacious kitchen that opens to the breakfast area and family room, creating a connected setting for daily living. Recessed lighting enhances the family room, while the morning room addition located off the kitchen adds extra space and natural light. The upgraded kitchen includes an island, quartz countertops, a tile backsplash, upgraded cabinetry, stainless steel appliances, under-cabinet lighting, and recessed lighting. A pantry and powder room are conveniently positioned nearby, and the flex room off the foyer has been converted into a dedicated study. Upstairs, the owner's suite offers a walk-in closet and a primary bath with a double vanity and a...



**Sales Office Hours**

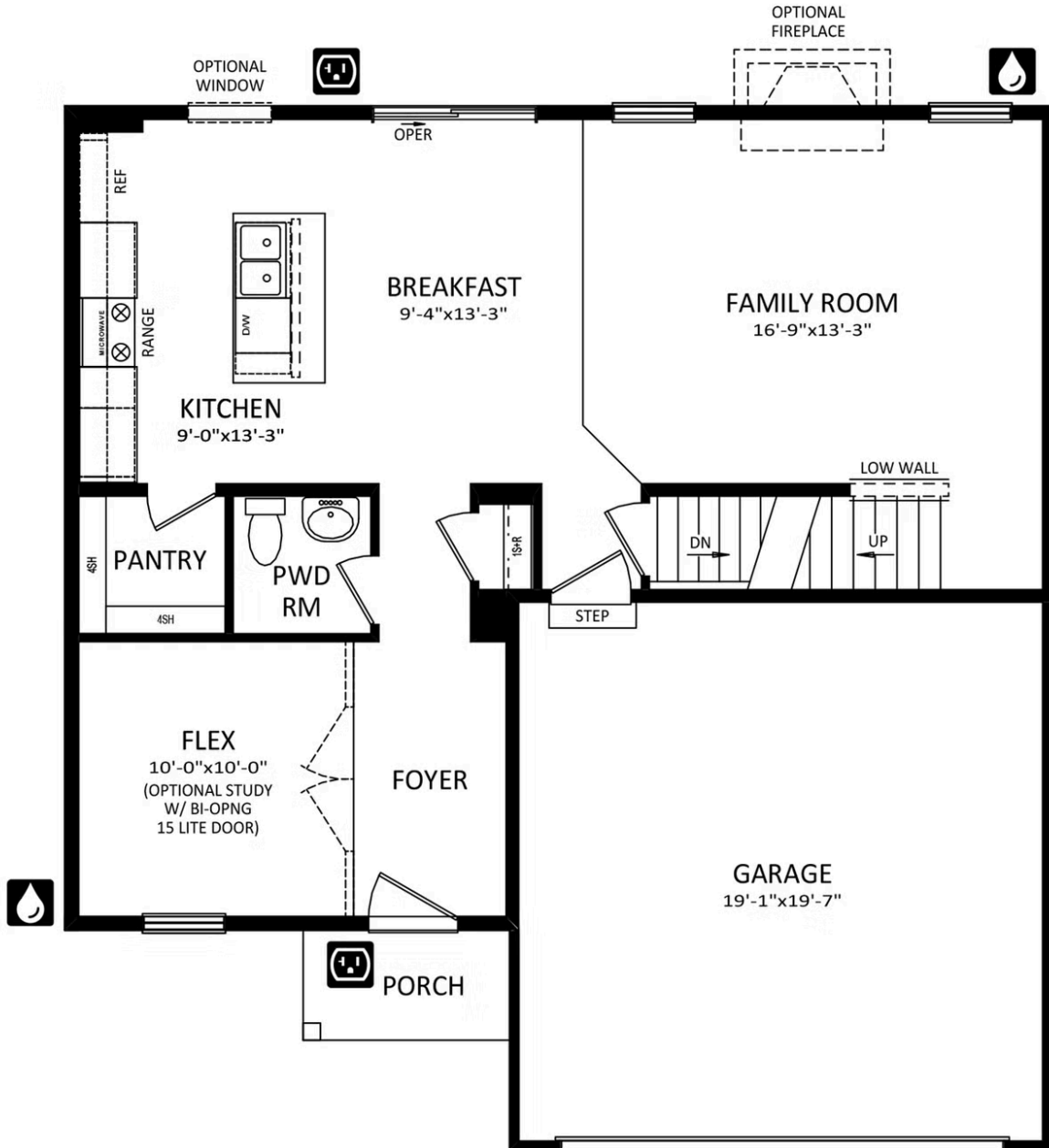
Wednesday - Saturday 10:00 am - 5:00 pm | Closed Sundays, Mondays, and Tuesdays



**Have Questions? Ask...**  
**KELLY**

(484) 772-2693 / [bhmarketing@berkshomes.com](mailto:bhmarketing@berkshomes.com)





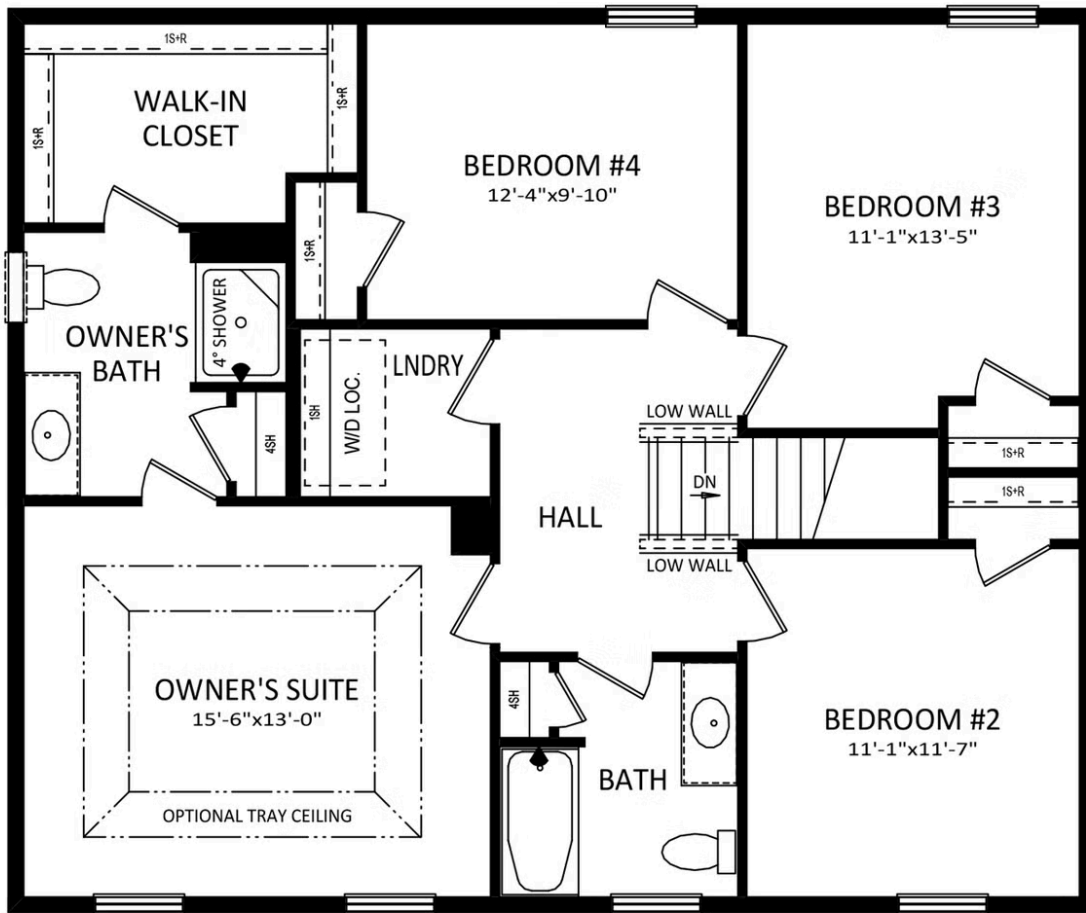
FIRST LEVEL



**Have Questions? Ask...**  
**KELLY**

(484) 772-2693 / [bhmarketing@berkshomes.com](mailto:bhmarketing@berkshomes.com)





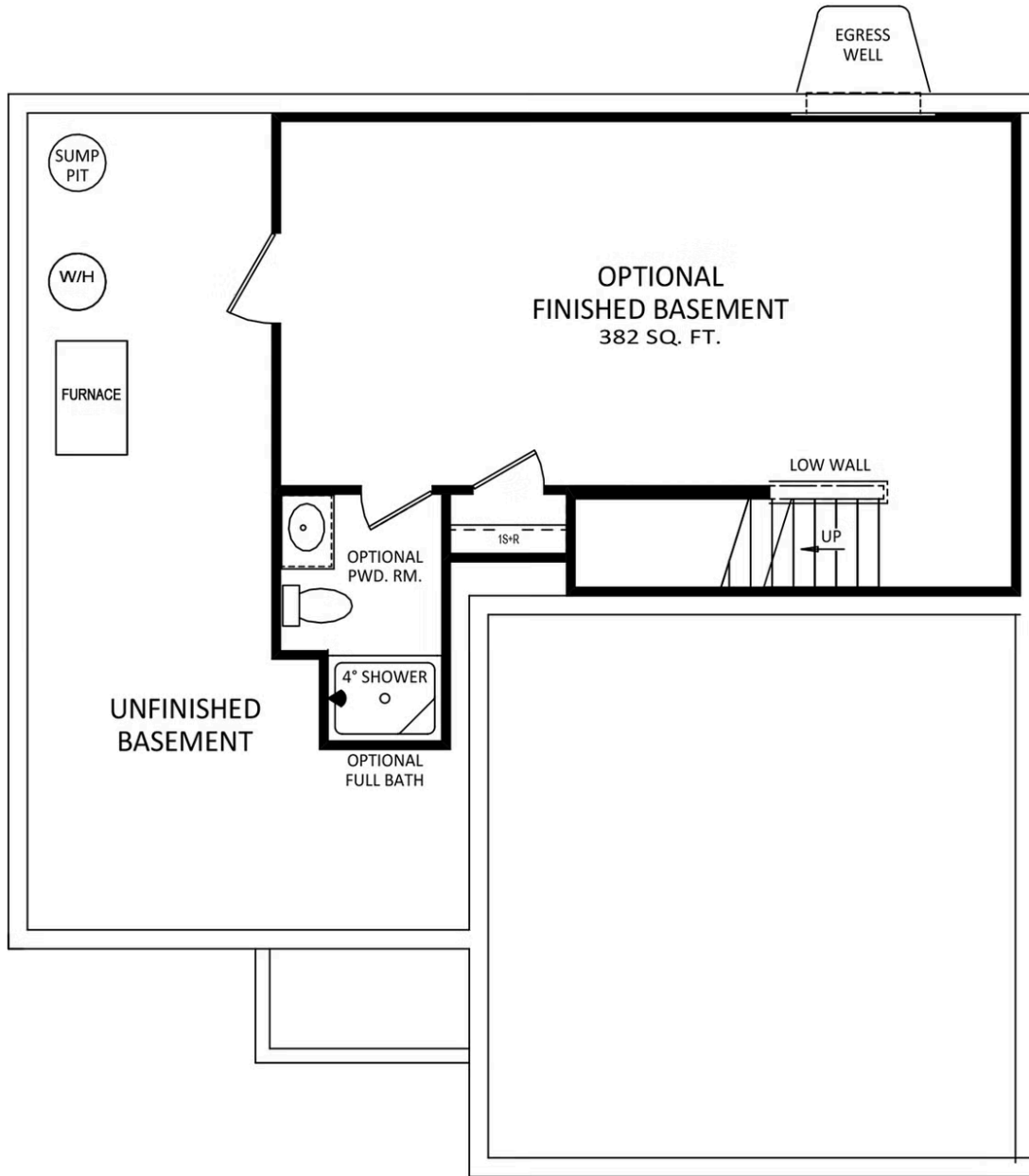
SECOND LEVEL



**Have Questions? Ask...**  
**KELLY**

(484) 772-2693 / [bhmarketing@berkshomes.com](mailto:bhmarketing@berkshomes.com)





LOWER LEVEL



**Have Questions? Ask...**  
**KELLY**

(484) 772-2693 / [bhmarketing@berkshomes.com](mailto:bhmarketing@berkshomes.com)

