

QUICK MOVE-IN

FLOORPLAN
White Oak Duplex
COMMUNITY
Shady Lane Estates



**4
Beds**



**3.0
Baths**



**2-Car
Garage**

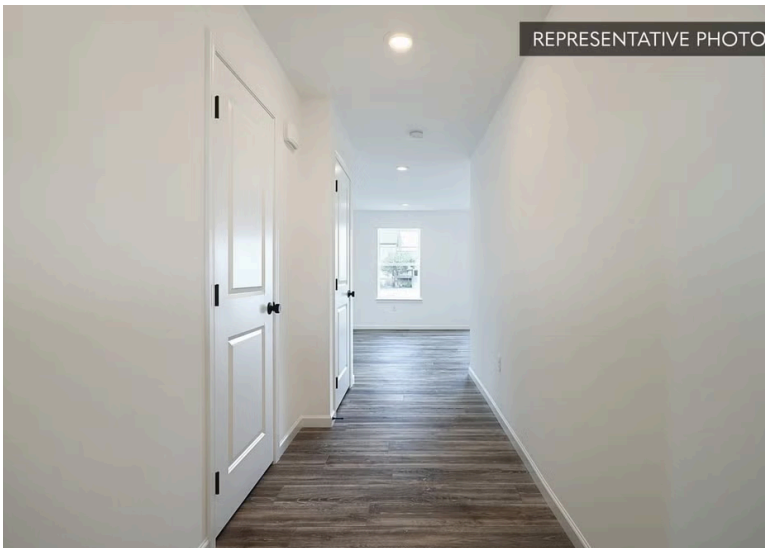


**2656
Sq. Ft.**



This thoughtfully designed 2,656 sq. ft., two story home offers a functional layout with several upgraded features throughout. The main level welcomes you with engineered vinyl plank flooring that flows seamlessly from the foyer through the family room and kitchen. At the front of the home, a private study with recessed lighting provides the perfect space for remote work or quiet focus. The open-concept family room features an upgraded window and lighting package, creating a bright, inviting atmosphere that connects effortlessly to the kitchen and breakfast area—ideal for everyday living or entertaining. The upgraded kitchen includes recessed lighting, granite countertops, an elegant tile backsplash, upgraded cabinetry, and electric stainless steel appliances. Upstairs, the spacious owner's suite include...

REPRESENTATIVE PHOTO



Sales Office Hours

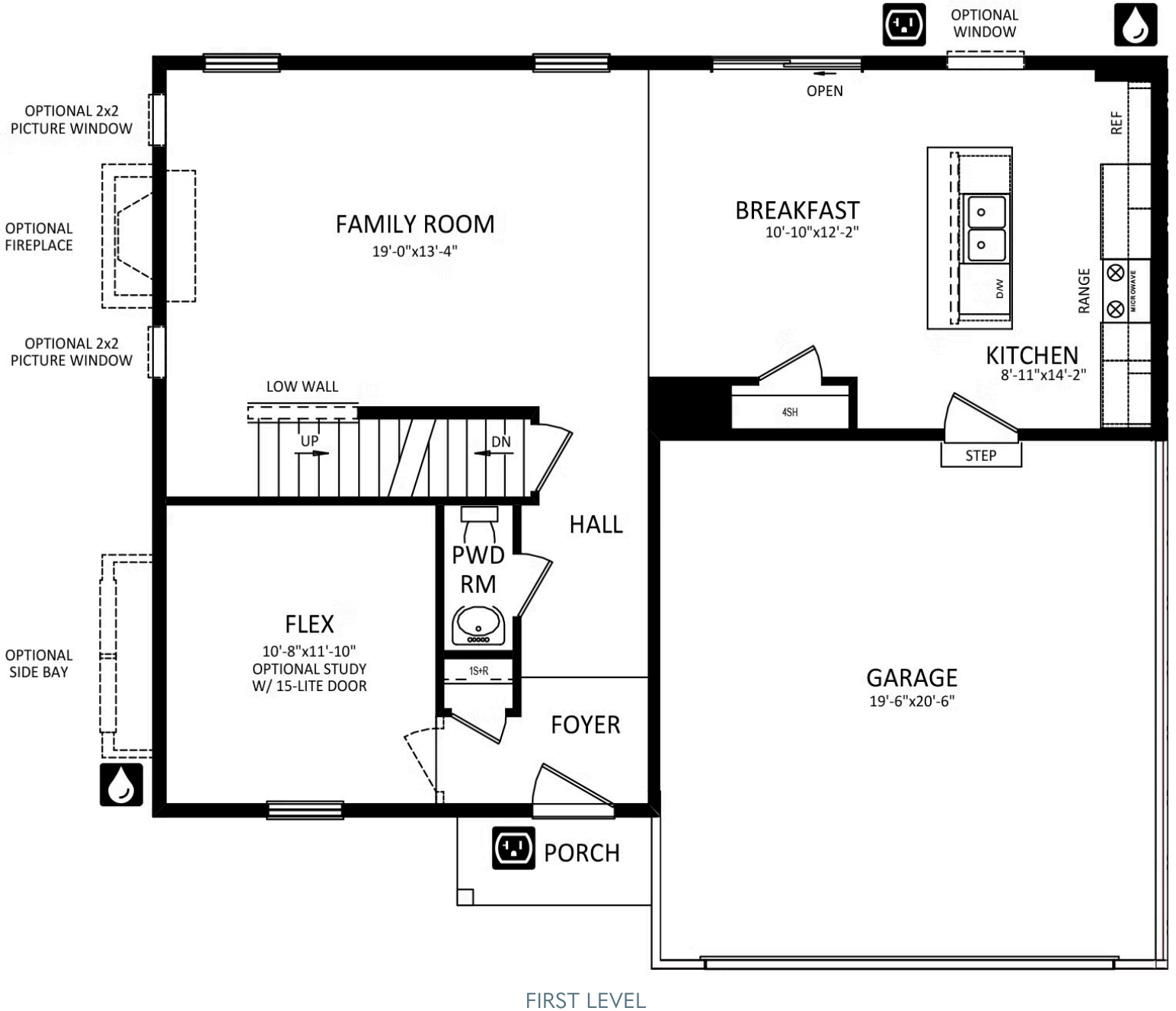
Wednesday - Saturday 10:00 am - 5:00 pm | Closed Sundays, Mondays, and Tuesdays



Have Questions? Ask...
KELLY

(484) 772-2693 / bhmarketing@berkshomes.com

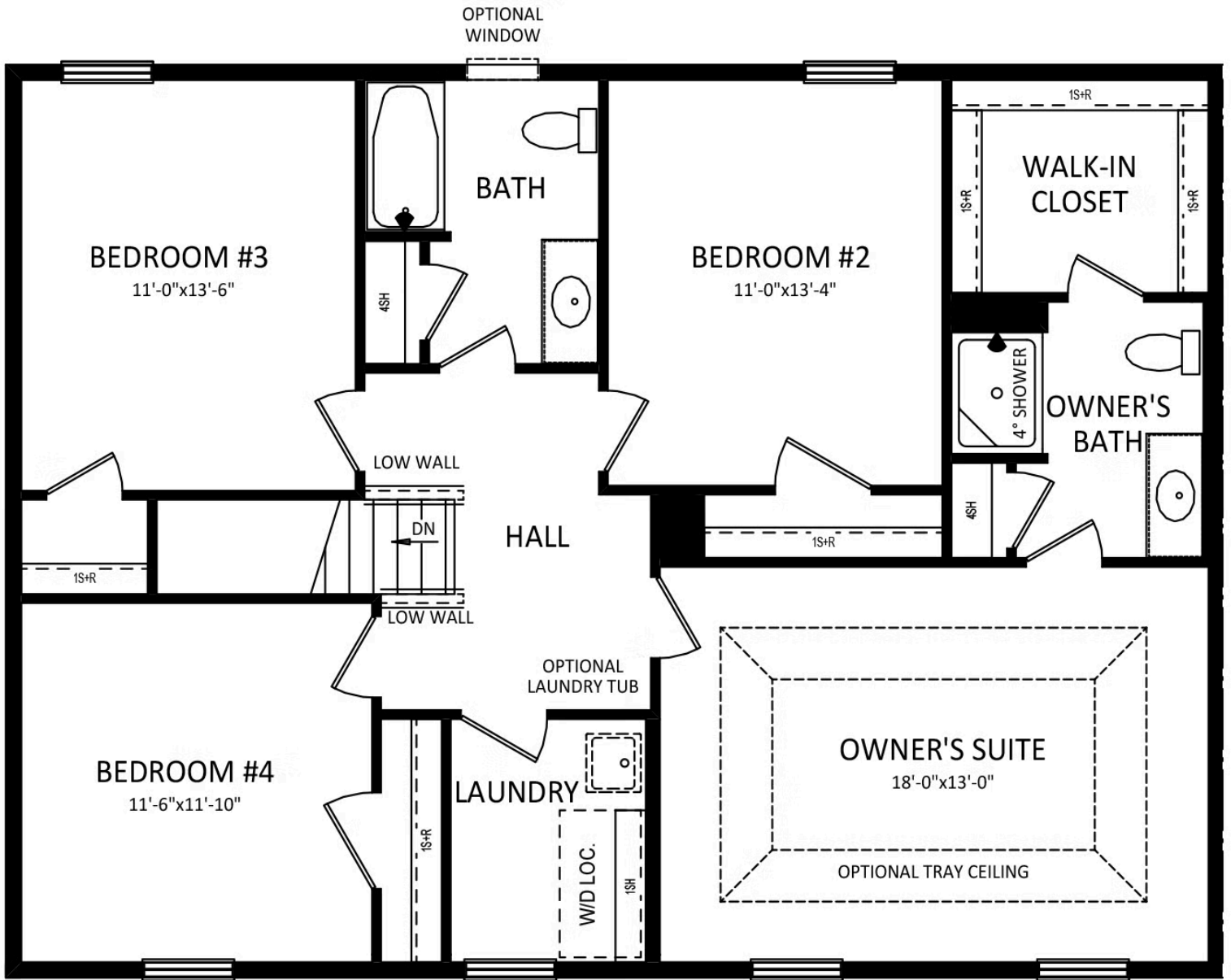




Have Questions? Ask...
KELLY

(484) 772-2693 / bhmarketing@berkshomes.com





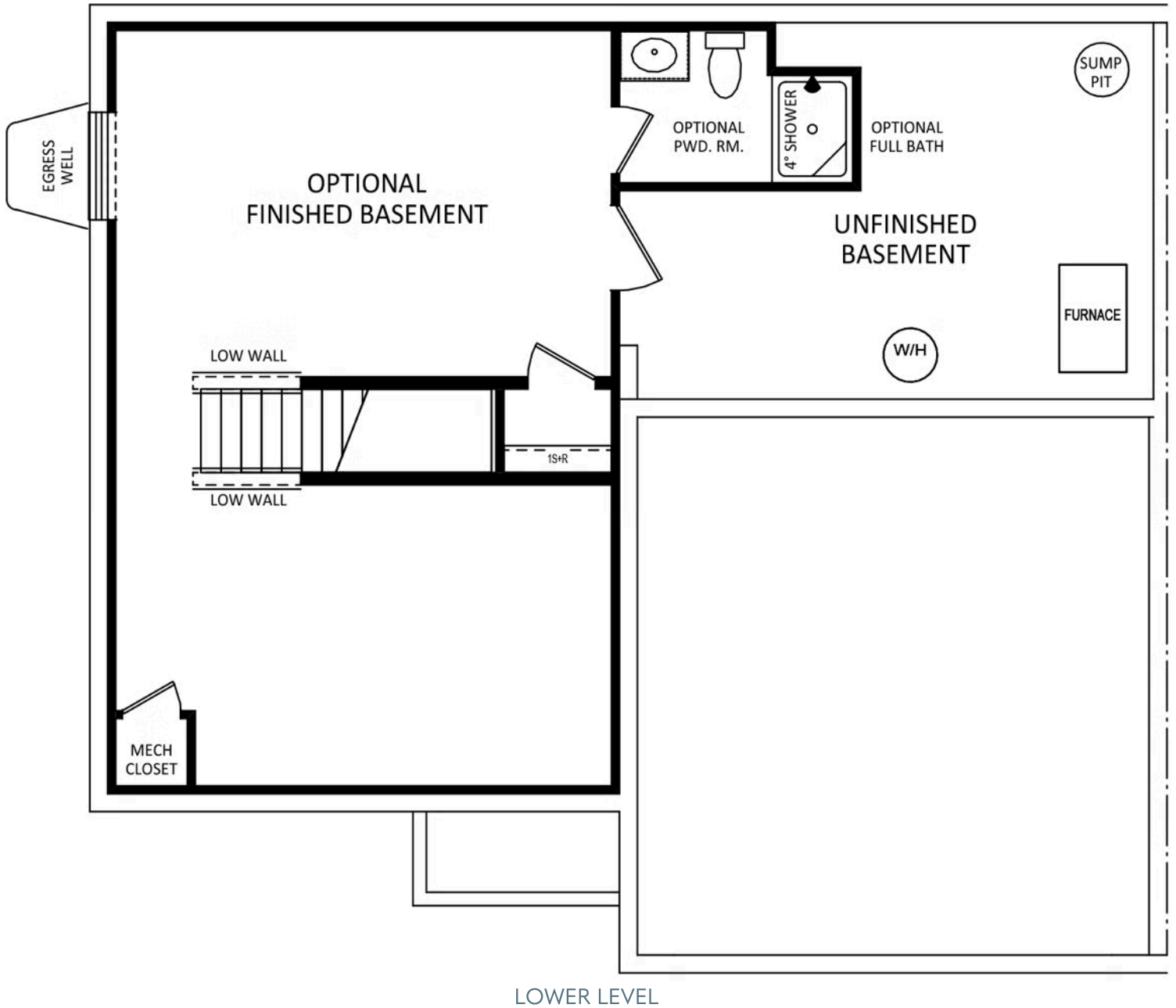
SECOND LEVEL



Have Questions? Ask...
KELLY

(484) 772-2693 / bhmarketing@berkshomes.com





Have Questions? Ask...
KELLY

(484) 772-2693 / bhmarketing@berkshomes.com

