

Barberry



COMMUNITY
Horse Farm Court

PRICED FROM
\$299,990



**3
Beds**



**2.5
Baths**



**2-Car
Garage**



1,620

-

**1,849
Sq. Ft.**

The Barberry is a smart and stylish 3-bedroom, 2.5-bathroom townhome designed for easy living and everyday comfort. The open-concept main level features a spacious family room that flows into the kitchen and breakfast area, making it perfect for entertaining or relaxing at home. The kitchen includes a central island, pantry storage, and access to a 10'x10' rear deck for outdoor enjoyment. Upstairs, the owner's suite offers a private retreat with two walk-in closets and a full bathroom with double vanity. Two additional bedrooms, a shared full bath, and a convenient second-floor laundry room round out the upper level. The lower level includes a 2-car garage and an unfinished basement—ideal for storage or future finishing potential. With its efficient layout, flexible living spaces, and modern design touches, the Barberry is built to fit your lifestyle from the ground up.



Have Questions? Ask...

KELLY

(484) 772-2693 / bhmarketing@berkshomes.com





ELEVATIONS "A" & "B"

FIRST LEVEL

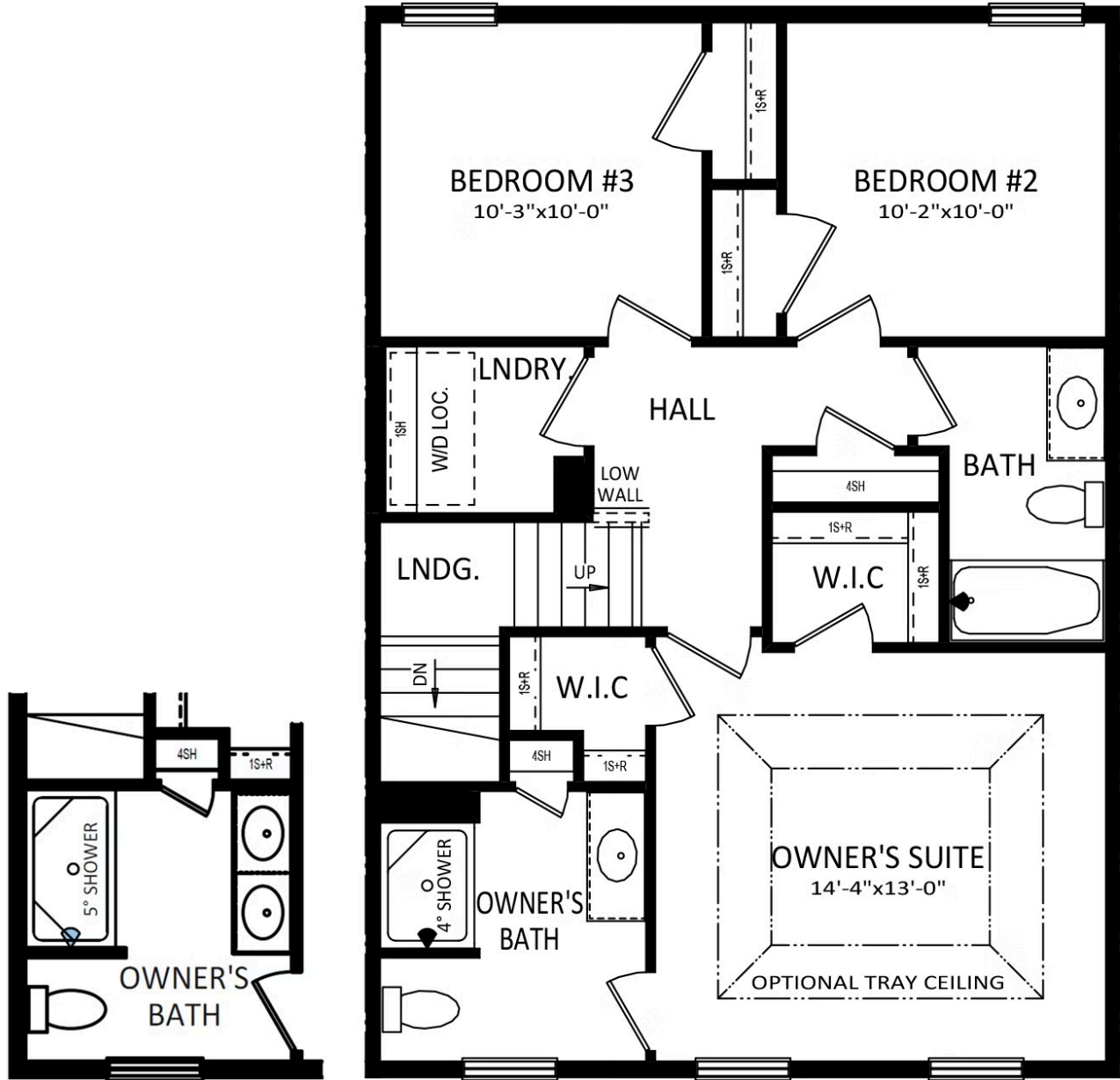


Have Questions? Ask...

KELLY

(484) 772-2693 / bhmarketing@berkshomes.com





DOUBLE-BOWL
VANITY PACKAGE

ELEVATIONS "A" & "B"

SECOND LEVEL

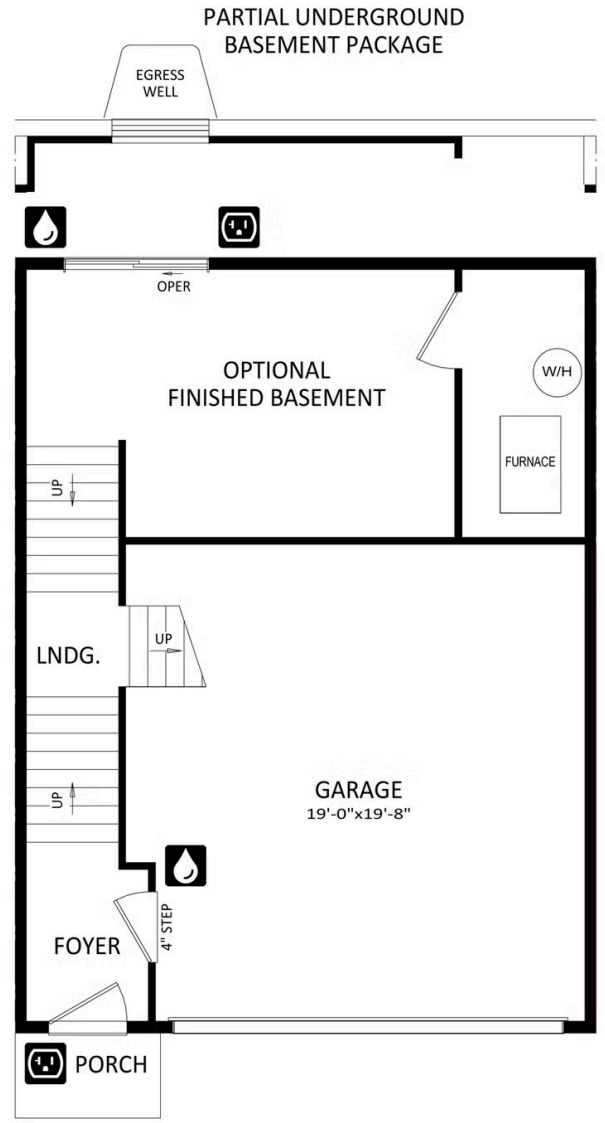
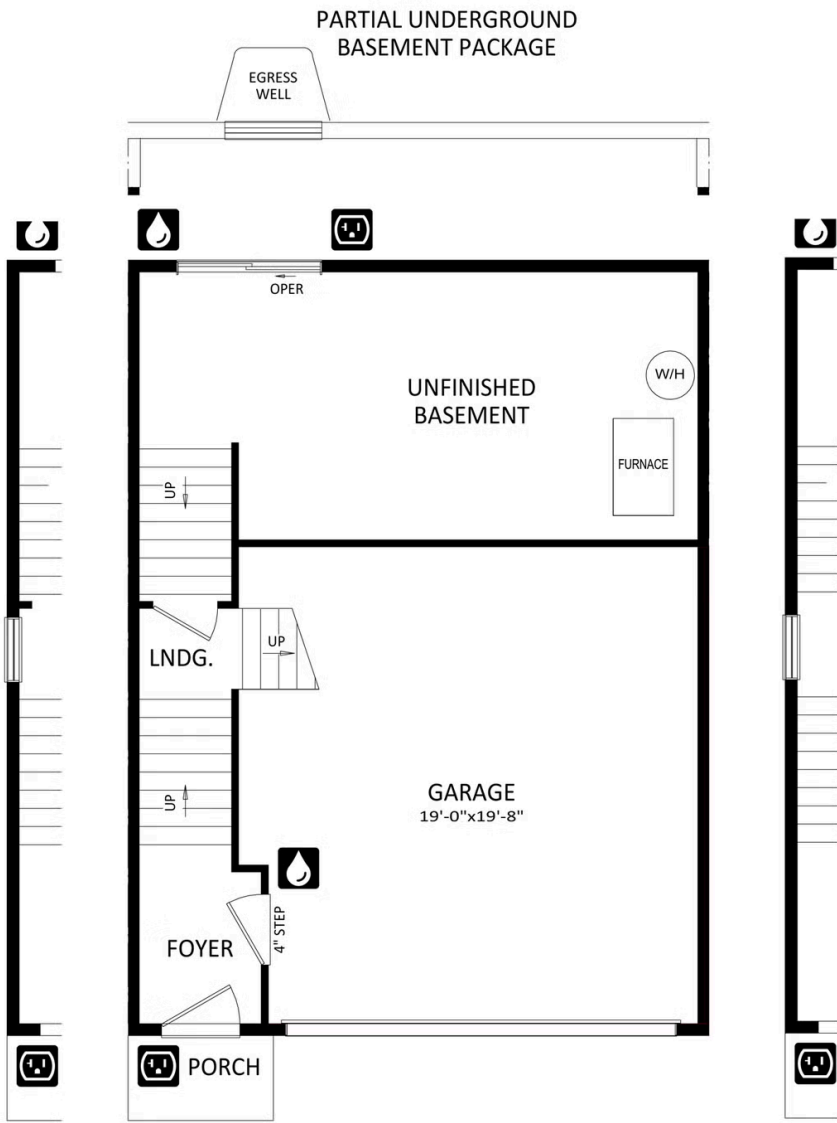


Have Questions? Ask...

KELLY

(484) 772-2693 / bhmarketing@berkshomes.com





LOWER LEVEL



Have Questions? Ask...

KELLY

(484) 772-2693 / bhmarketing@berkshomes.com

