

# 13 Julian Drive, Unit 101 LOT 6

\$359,990

REPRESENTATIVE PHOTO



QUICK MOVE-IN

FLOORPLAN

**Lily**

COMMUNITY

**Horse Farm Court**



**3  
Beds**



**2.5  
Baths**



**2-Car  
Garage**



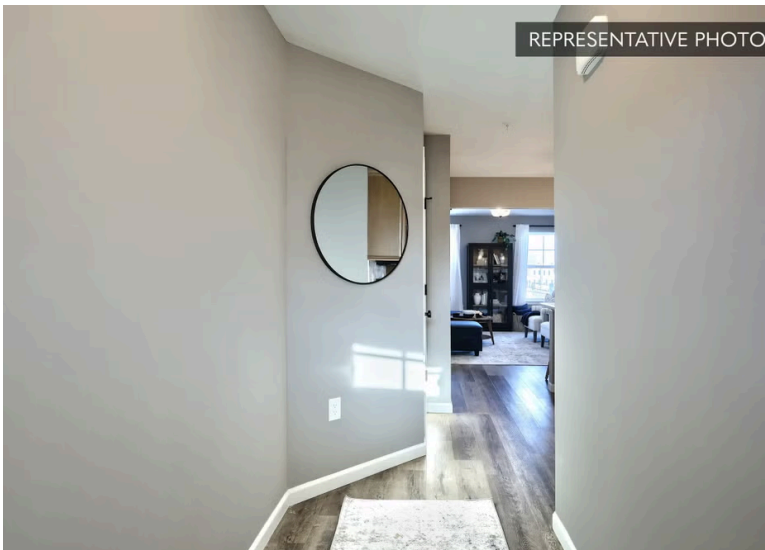
**1725  
Sq. Ft.**

REPRESENTATIVE PHOTO



A unique opportunity to personalize your home with your own design selections. Buyers will receive up to a \$10,000 credit in the Selection Gallery to apply toward interior finishes. The home's structural features are already in place, allowing you to focus on selecting the finishes that best fit your style. All interior selections must be completed by May 8, 2026. This home includes an expanded family room with recessed lighting and a triple bay window, bringing in additional natural light and creating a more open living space. The kitchen is already upgraded with an island, tile backsplash, upgraded cabinetry, and recessed lighting, providing a functional layout for everyday living and gathering. Upstairs, the owner's suite includes recessed lighting and connects to a private bath with a double bowl vanity and walk-in...

REPRESENTATIVE PHOTO



**Bloomsburg School District**

### Sales Office Hours

Open Wednesday - Saturday 10:00 am - 5:00 pm | Closed  
Sundays, Mondays, and Tuesdays



**Have Questions? Ask...**  
**KELLY**

(484) 772-2693 / [bhmarketing@berkshomes.com](mailto:bhmarketing@berkshomes.com)

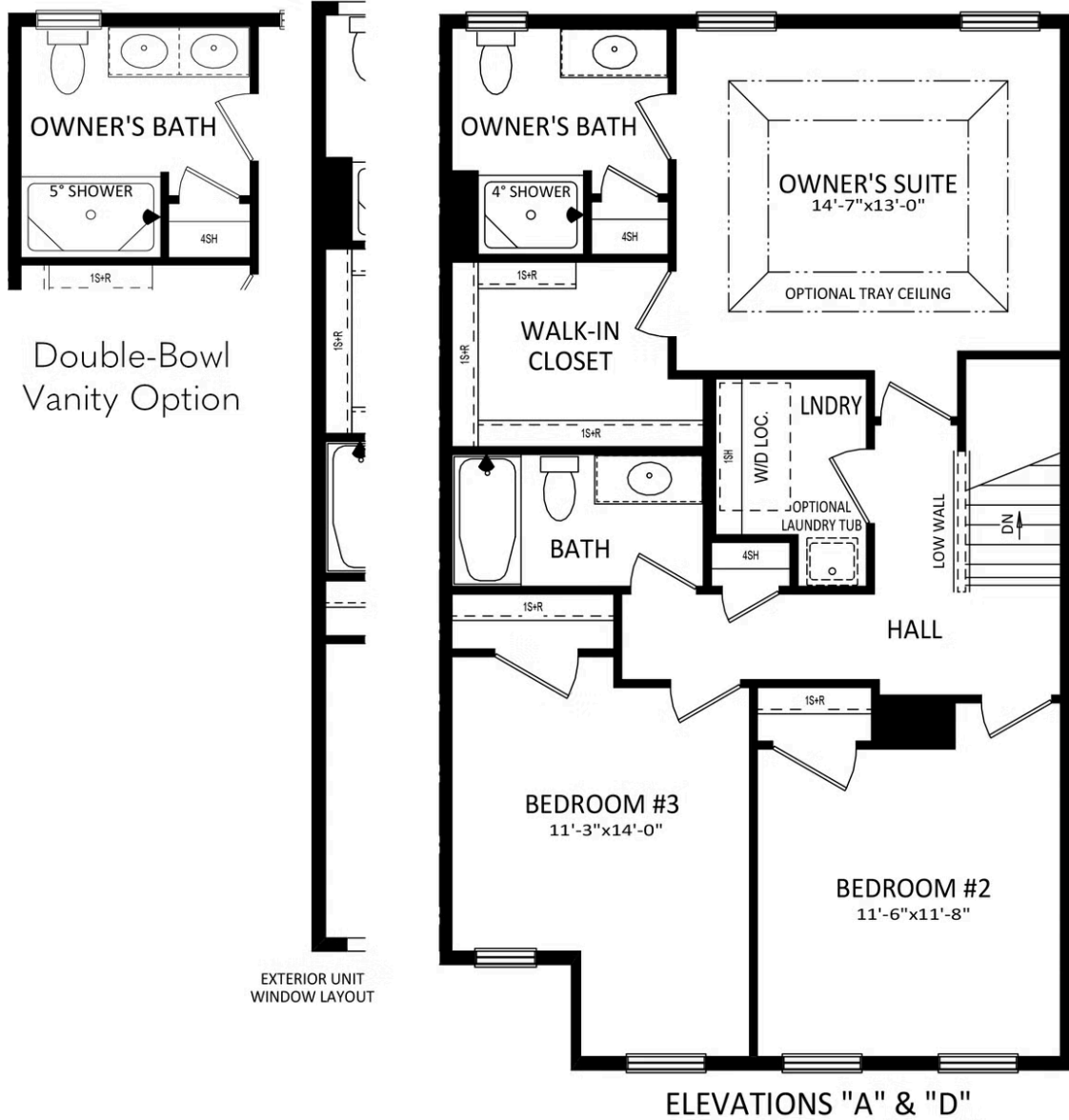




**Have Questions? Ask...**  
**KELLY**

(484) 772-2693 / [bhmarketing@berkshomes.com](mailto:bhmarketing@berkshomes.com)





SECOND LEVEL

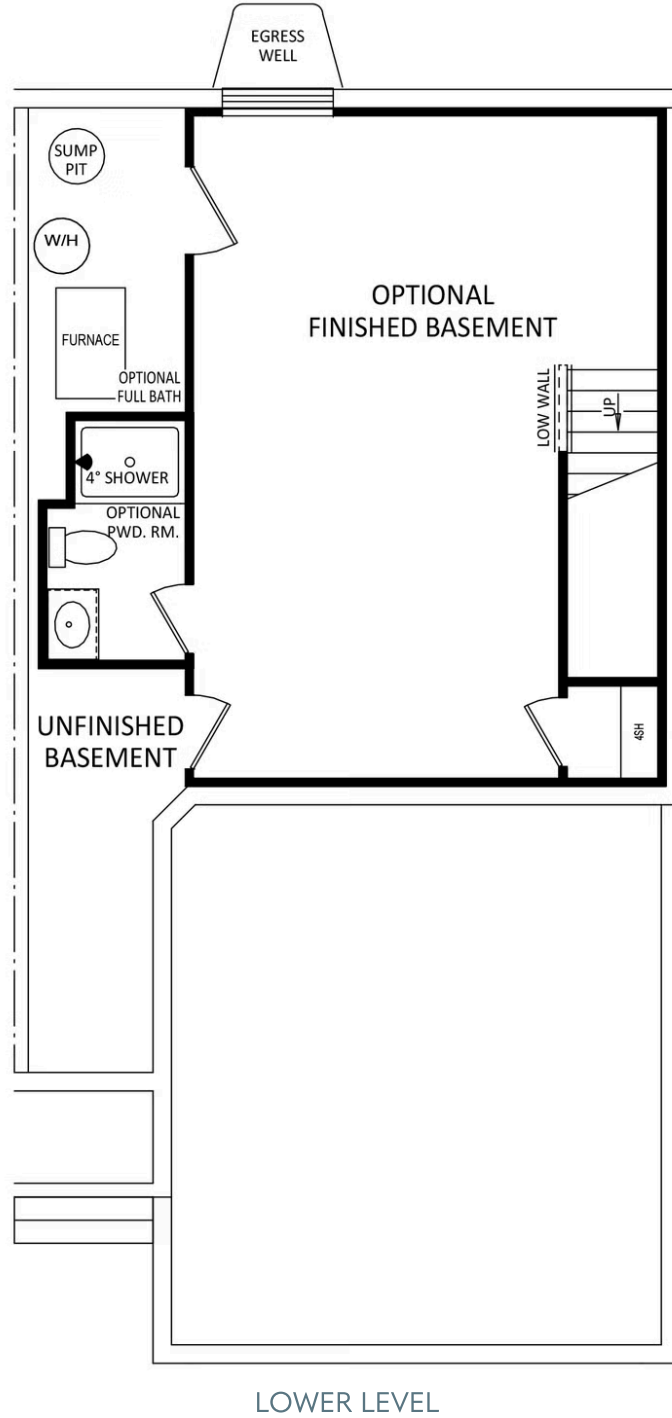


**Have Questions? Ask...**  
**KELLY**

(484) 772-2693 / [bhmarketing@berkshomes.com](mailto:bhmarketing@berkshomes.com)



# 13 Julian Drive, Unit 101 LOT 6



**Have Questions? Ask...**  
KELLY

(484) 772-2693 / [bhmarketing@berkshomes.com](mailto:bhmarketing@berkshomes.com)

