

13 Julian Drive, Unit 103 LOT 8

\$349,990



REPRESENTATIVE PHOTO

QUICK MOVE-IN

FLOORPLAN

Lily

COMMUNITY

Horse Farm Court



**3
Beds**



**2.5
Baths**



**2-Car
Garage**

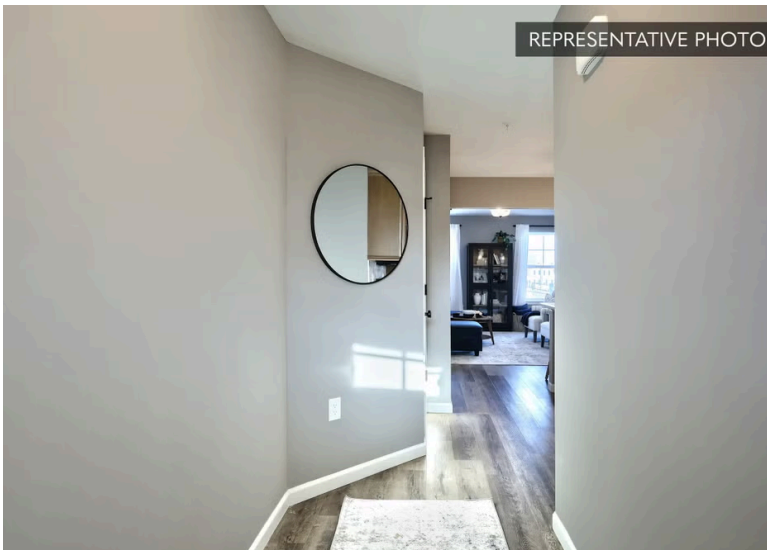


**1621
Sq. Ft.**



REPRESENTATIVE PHOTO

A unique opportunity to personalize your home with your own design selections. Buyers will receive up to a \$10,000 credit in the Selection Gallery to apply toward interior finishes. The home's structural features are already in place, allowing you to focus on selecting the finishes that best fit your style. All interior selections must be completed by May 8, 2026. The main level includes a family room with recessed lighting, creating a comfortable space for everyday living. The kitchen is already upgraded with an island, tile backsplash, upgraded cabinetry, and recessed lighting, offering a functional layout and modern finishes at the center of the home. Upstairs, the owner's suite includes recessed lighting and connects to a private bath featuring a double bowl vanity and tile shower. Additional bedroo...



REPRESENTATIVE PHOTO

Bloomsburg School District

Sales Office Hours

By Appointment: Open Wednesday - Saturday 10:00 am - 5:00 pm | Closed Sundays, Mondays, and Tuesdays



Have Questions? Ask...
KELLY

(484) 772-2693 / bhmarketing@berkshomes.com

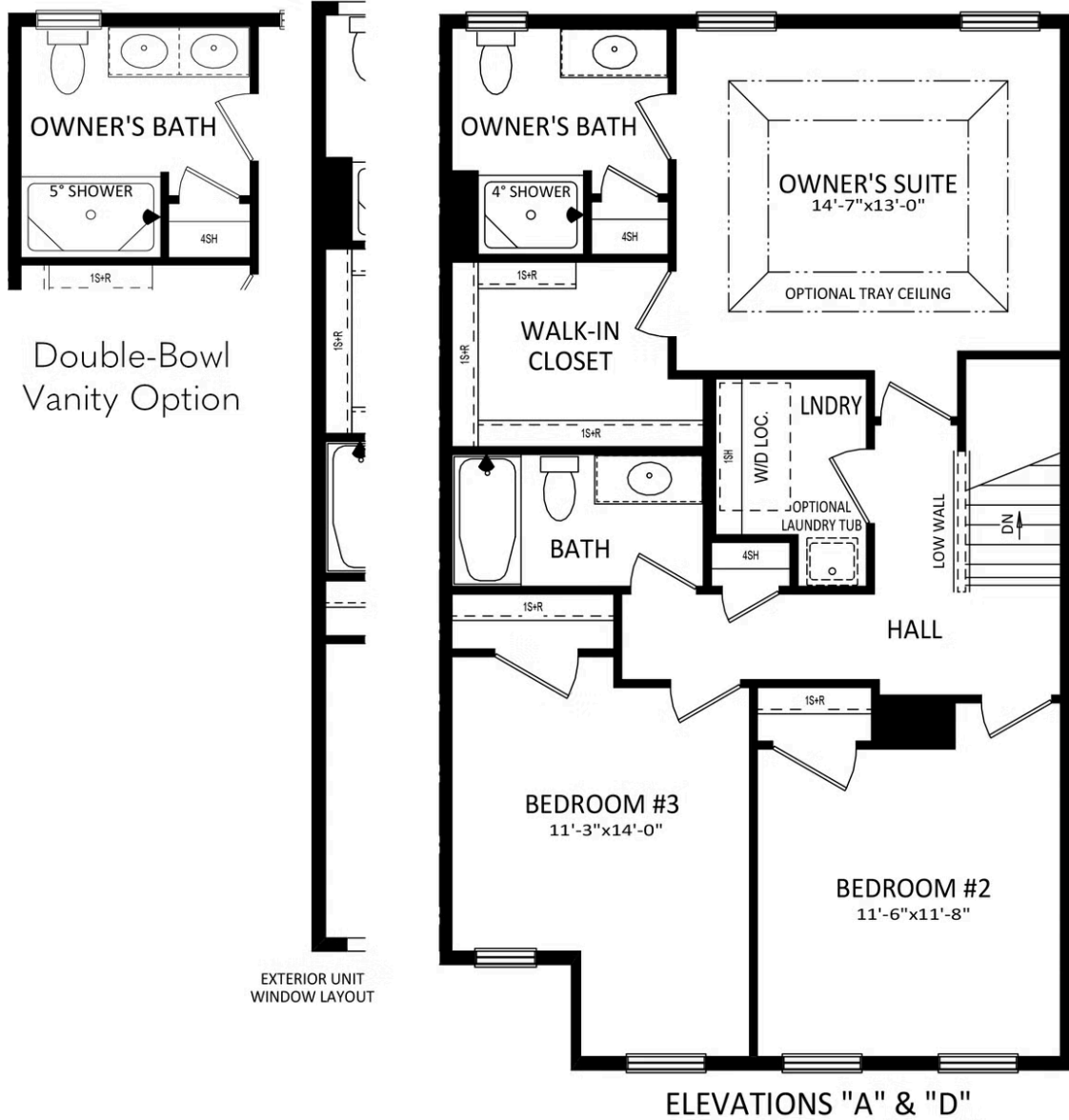




Have Questions? Ask...
KELLY

(484) 772-2693 / bhmarketing@berkshomes.com





SECOND LEVEL

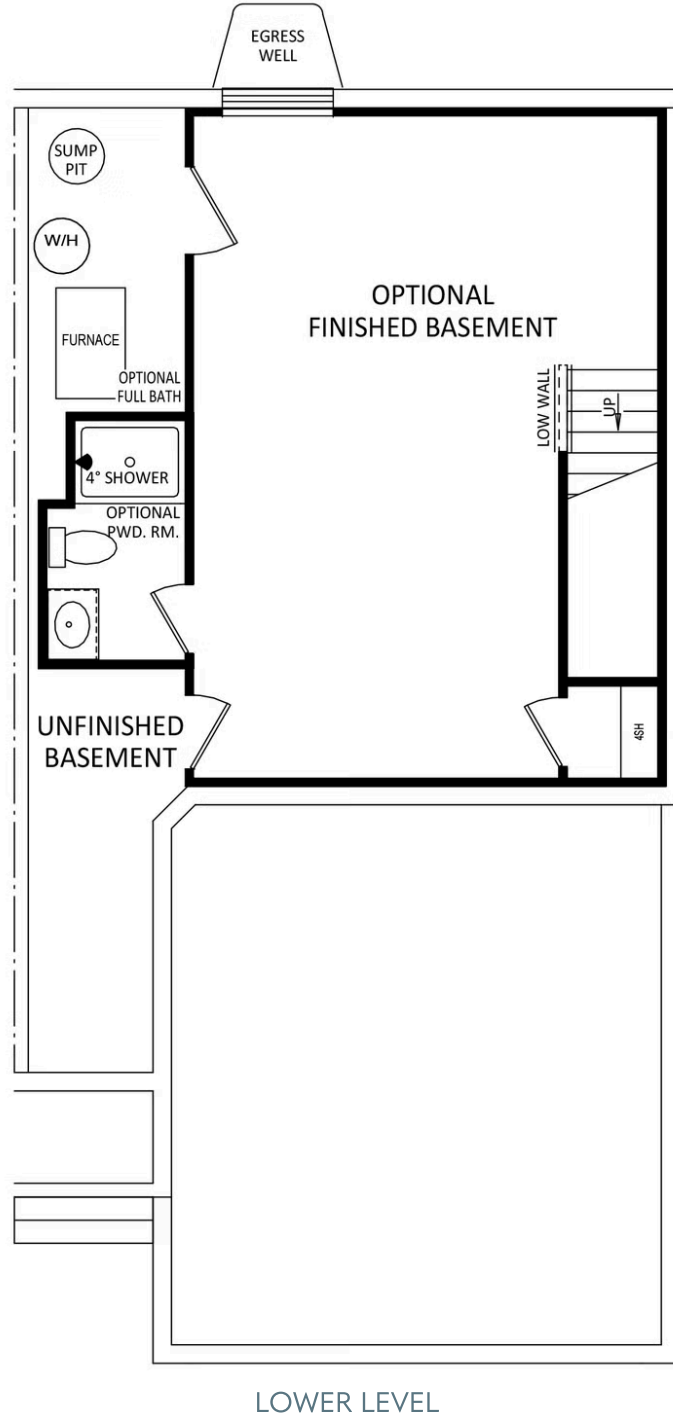


Have Questions? Ask...
KELLY

(484) 772-2693 / bhmarketing@berkshomes.com



13 Julian Drive, Unit 103 LOT 8



Have Questions? Ask...
KELLY

(484) 772-2693 / bhmarketing@berkshomes.com

