

REPRESENTATIVE PHOTO



REPRESENTATIVE PHOTO



REPRESENTATIVE PHOTO



UNDER CONSTRUCTION

FLOORPLAN

Lily

COMMUNITY

Horse Farm Court



**3
Beds**



**2.5
Baths**



**2-Car
Garage**



**2053
Sq. Ft.**

The main level welcomes you with engineered vinyl plank flooring throughout and an open layout that connects the kitchen, breakfast area, and family room at the heart of the home. The kitchen includes upgraded cabinetry, quartz countertops, stainless steel electric appliances, and recessed lighting. The family room continues the warm feel with a recessed light package, creating a comfortable space for everyday living.

Upstairs, the primary bedroom includes recessed lighting and connects to a private bath featuring a double bowl vanity with 60" raised height cabinetry and a shower with a 60" sliding framed door. Two additional bedrooms, a full hall bath, and a conveniently located laundry area complete the second floor. The finished basement with full bath adds versatile living space to fit your lifestyle.

Bloomsburg School District

Sales Office Hours

Open Wednesday - Saturday 10:00 am - 5:00 pm | Closed
Sundays, Mondays, and Tuesdays



Have Questions? Ask...
KELLY

(484) 772-2693 / bhmarketing@berkshomes.com



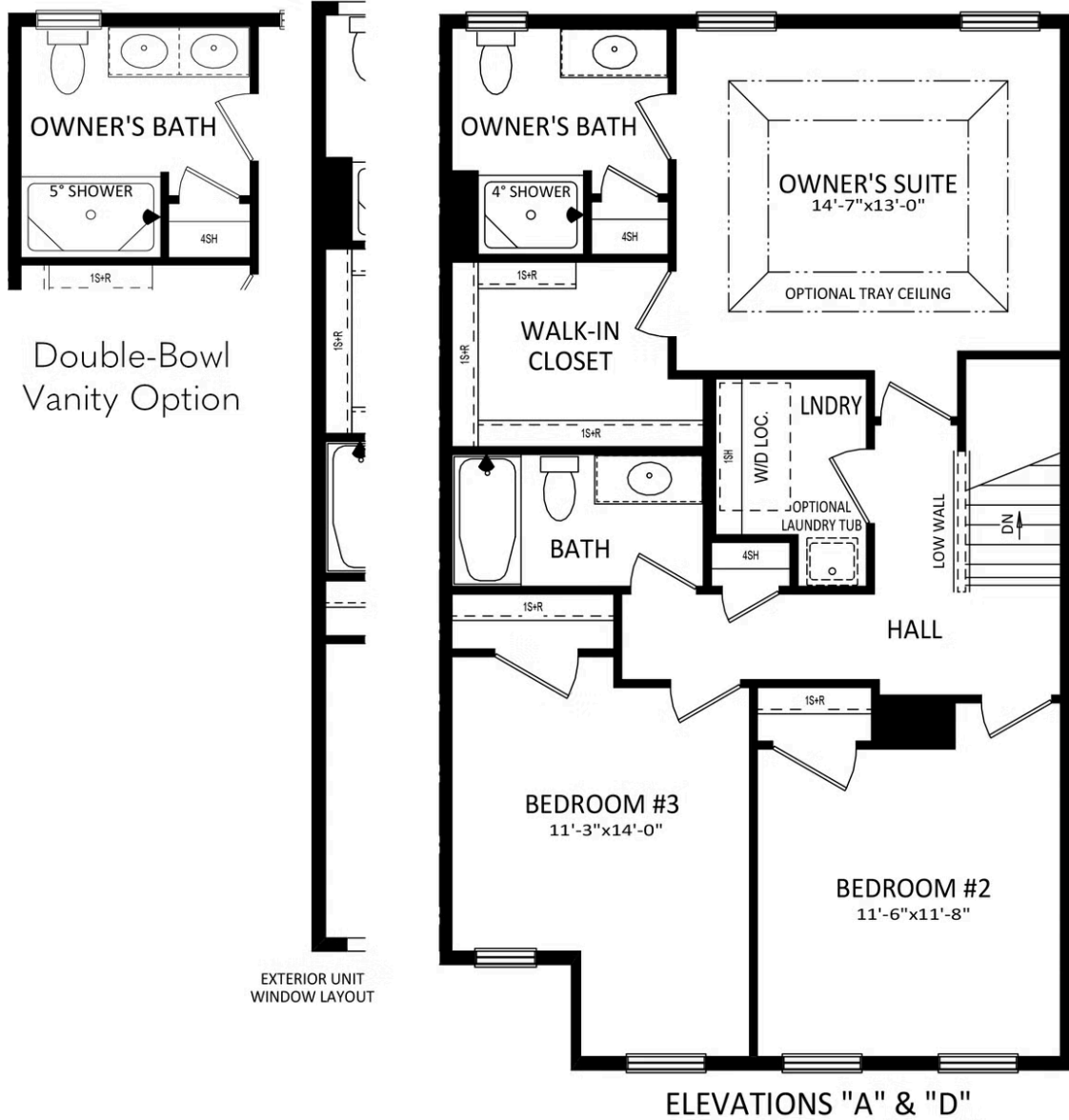


Have Questions? Ask...
KELLY

(484) 772-2693 / bhmarketing@berkshomes.com



19 Julian Drive, Unit 103 LOT 12



SECOND LEVEL

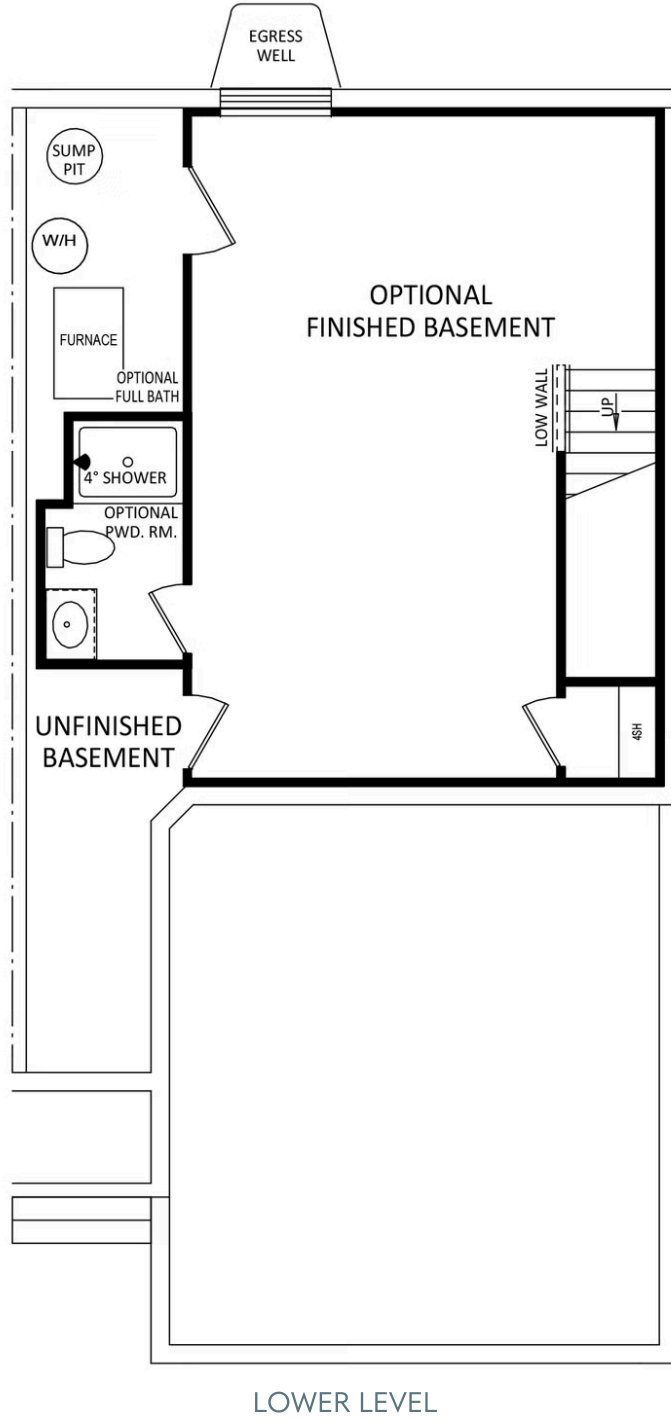


Have Questions? Ask...
KELLY

(484) 772-2693 / bhmarketing@berkshomes.com



19 Julian Drive, Unit 103 LOT 12



Have Questions? Ask...
KELLY

(484) 772-2693 / bhmarketing@berkshomes.com

