

REPRESENTATIVE PHOTO



UNDER CONSTRUCTION

FLOORPLAN

**Lily**

COMMUNITY

**Horse Farm Court**



**3  
Beds**



**3.5  
Baths**



**2-Car  
Garage**



**2053  
Sq. Ft.**

REPRESENTATIVE PHOTO



The main level welcomes you with engineered vinyl plank flooring throughout and an open layout that connects the kitchen, breakfast area, and family room at the heart of the home. The kitchen includes upgraded cabinetry, quartz countertops, stainless steel electric appliances, and recessed lighting. The family room continues the warm feel with a recessed light package and 2'x2' window package, creating a comfortable space for everyday living.

Upstairs, the primary bedroom includes recessed lighting and connects to a private bath featuring a double bowl vanity with 60" raised height cabinetry and a shower with a 60" sliding framed door. Two additional bedrooms, a full hall bath, and a conveniently located laundry area complete the second floor. The finished basement with...

REPRESENTATIVE PHOTO



**Bloomsburg School District**

**Sales Office Hours**

Open Wednesday - Saturday 10:00 am - 5:00 pm | Closed  
Sundays, Mondays, and Tuesdays



**Have Questions? Ask...**  
**KELLY**

(484) 772-2693 / [bhmarketing@berkshomes.com](mailto:bhmarketing@berkshomes.com)



# 19 Julian Drive, Unit 104 LOT 13

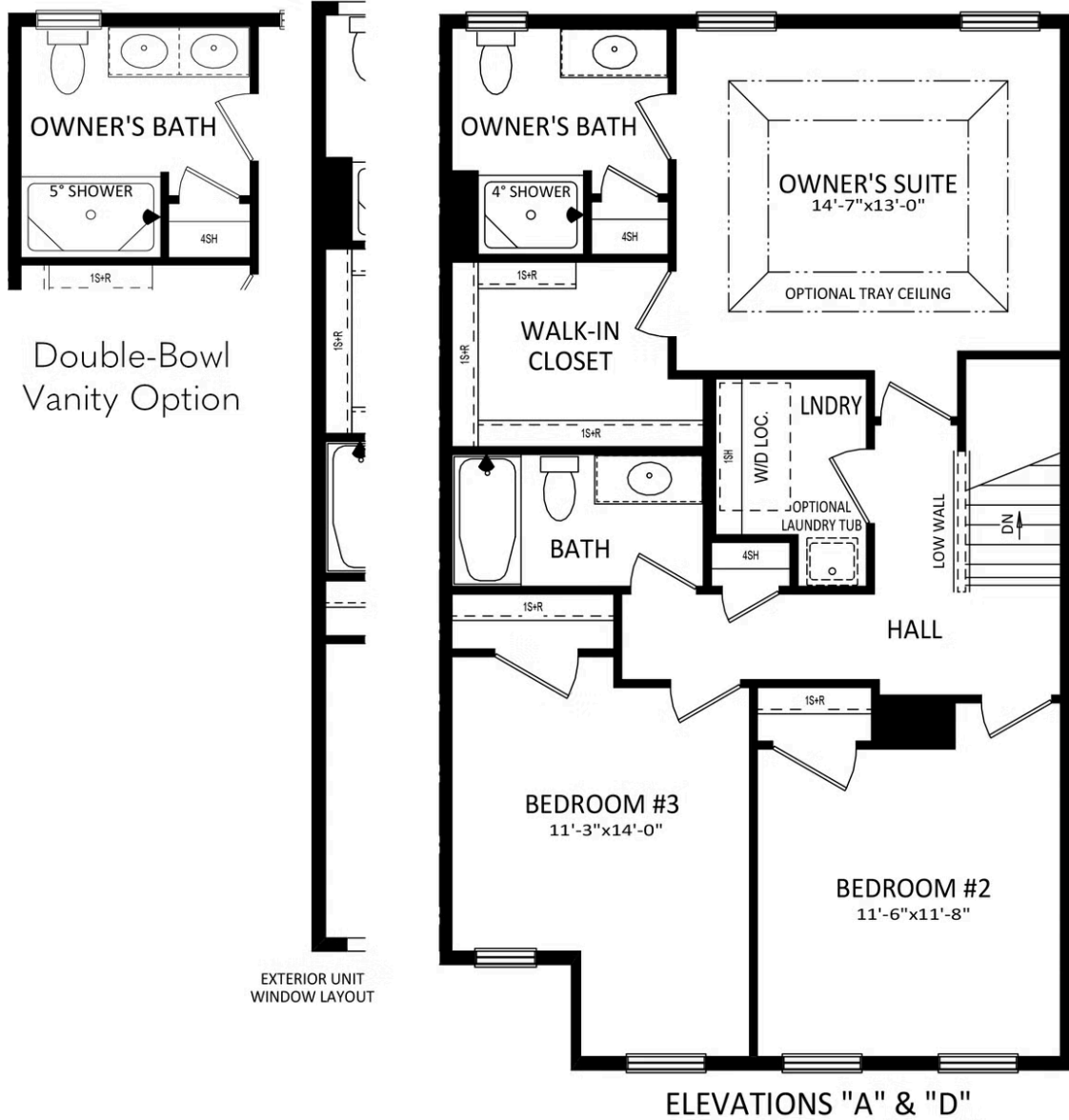


**Have Questions? Ask...**  
**KELLY**

(484) 772-2693 / [bhmarketing@berkshomes.com](mailto:bhmarketing@berkshomes.com)



# 19 Julian Drive, Unit 104 LOT 13



SECOND LEVEL

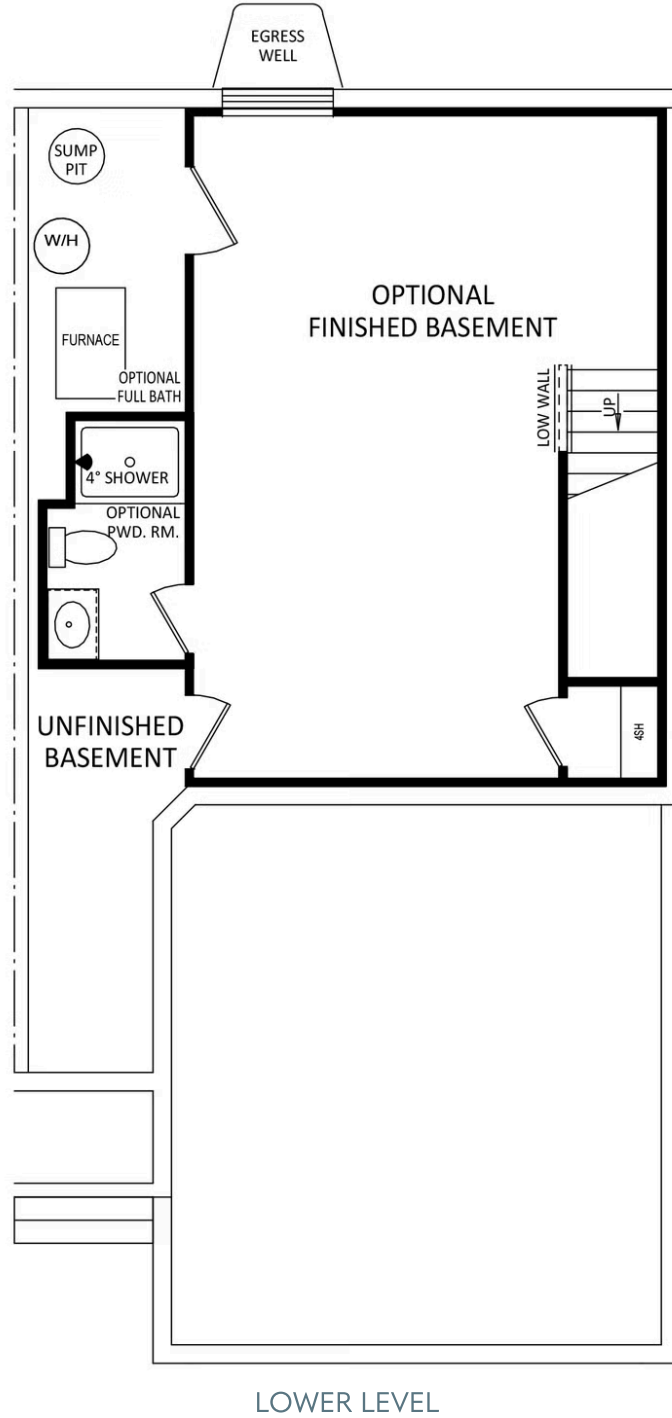


**Have Questions? Ask...**  
**KELLY**

(484) 772-2693 / [bhmarketing@berkshomes.com](mailto:bhmarketing@berkshomes.com)



# 19 Julian Drive, Unit 104 LOT 13



**Have Questions? Ask...**  
**KELLY**

(484) 772-2693 / [bhmarketing@berkshomes.com](mailto:bhmarketing@berkshomes.com)

