

20 Julian Drive Unit 102 LOT 31

\$359,990

REPRESENTATIVE PHOTO



QUICK MOVE-IN

FLOORPLAN

Lily

COMMUNITY

Horse Farm Court



**3
Beds**



**3.5
Baths**



**2-Car
Garage**



**2180
Sq. Ft.**

REPRESENTATIVE PHOTO



This well-appointed home delivers smart design and quality finishes across every level — including a walkout finished basement.

The main floor features engineered vinyl plank flooring throughout, creating a clean, consistent foundation from the foyer through to the kitchen. The upgraded kitchen is the heart of the home — including a center island, quartz countertops, tile backsplash, upgraded cabinetry, stainless steel appliances, and recessed lighting. The expanded family room flows naturally off the kitchen and breakfast area, with recessed lighting adding warmth and function to the space.

Upstairs, the Owner's Suite is generously sized with...

Bloomsburg School District

Sales Office Hours

By Appointment: Open Wednesday - Saturday 10:00 am - 5:00 pm | Closed Sundays, Mondays, and Tuesdays

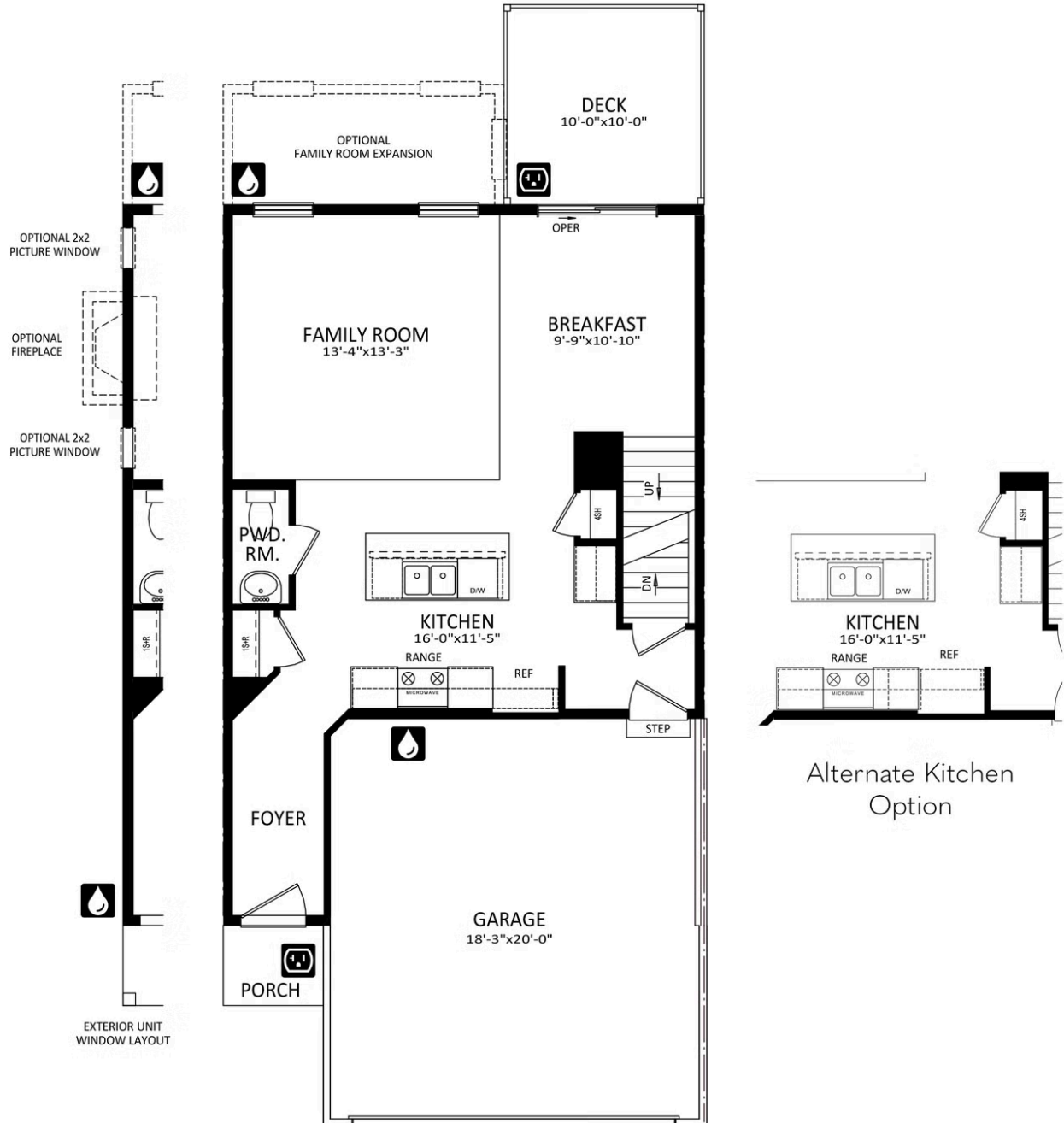
REPRESENTATIVE PHOTO



Have Questions? Ask...
KELLY

(484) 772-2693 / bhmarketing@berkshomes.com





LILY FIRST LEVEL

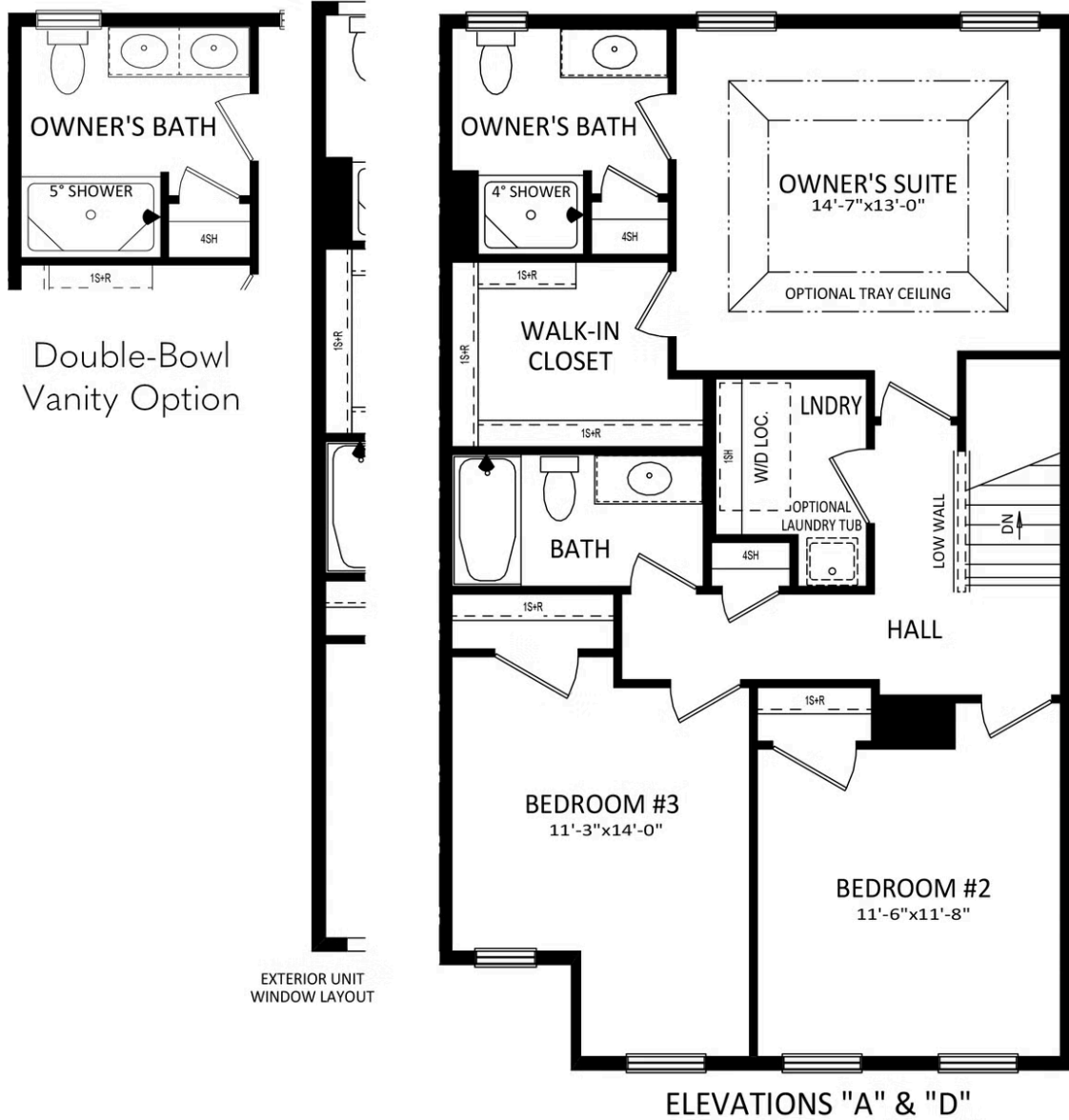


Have Questions? Ask...
KELLY

(484) 772-2693 / bhmarketing@berkshomes.com



20 Julian Drive Unit 102 LOT 31



LILY SECOND LEVEL

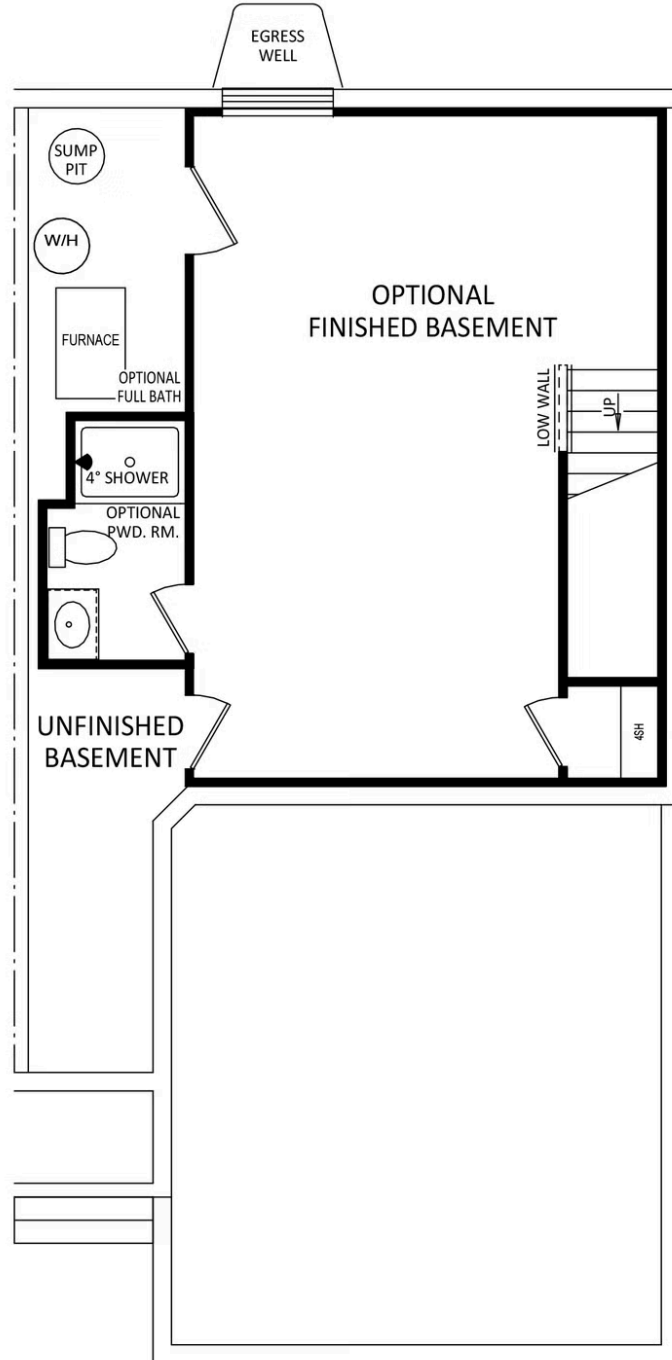


Have Questions? Ask...
KELLY

(484) 772-2693 / bhmarketing@berkshomes.com



20 Julian Drive Unit 102 LOT 31



LILY LOWER LEVEL



Have Questions? Ask...
KELLY

(484) 772-2693 / bhmarketing@berkshomes.com

