

QUICK MOVE-IN

FLOORPLAN

Lily

COMMUNITY

Horse Farm Court



**3
Beds**



**3.5
Baths**



**2-Car
Garage**



**2043
Sq. Ft.**



REPRESENTATIVE PHOTO



REPRESENTATIVE PHOTO

This home combines practical upgrades and thoughtful design across every level — including a walkout finished basement that adds real, usable space with direct outdoor access.

The main floor features engineered vinyl plank flooring throughout, bringing a clean, durable finish from the foyer through the main living areas. The upgraded kitchen is well-equipped for everyday life — featuring a center island, granite countertops, tile backsplash, upgraded cabinetry, stainless steel appliances, and recessed lighting. The family room flows right off the kitchen and breakfast area, with recessed lighting keeping the space bright and welcoming.

...

Sales Office Hours

By Appointment: Open Wednesday - Saturday 10:00 am - 5:00 pm | Closed Sundays, Mondays, and Tuesdays



Have Questions? Ask...
KELLY

(484) 772-2693 / bhmarketing@berkshomes.com



20 Julian Drive Unit 103 LOT 32



LILY FIRST LEVEL

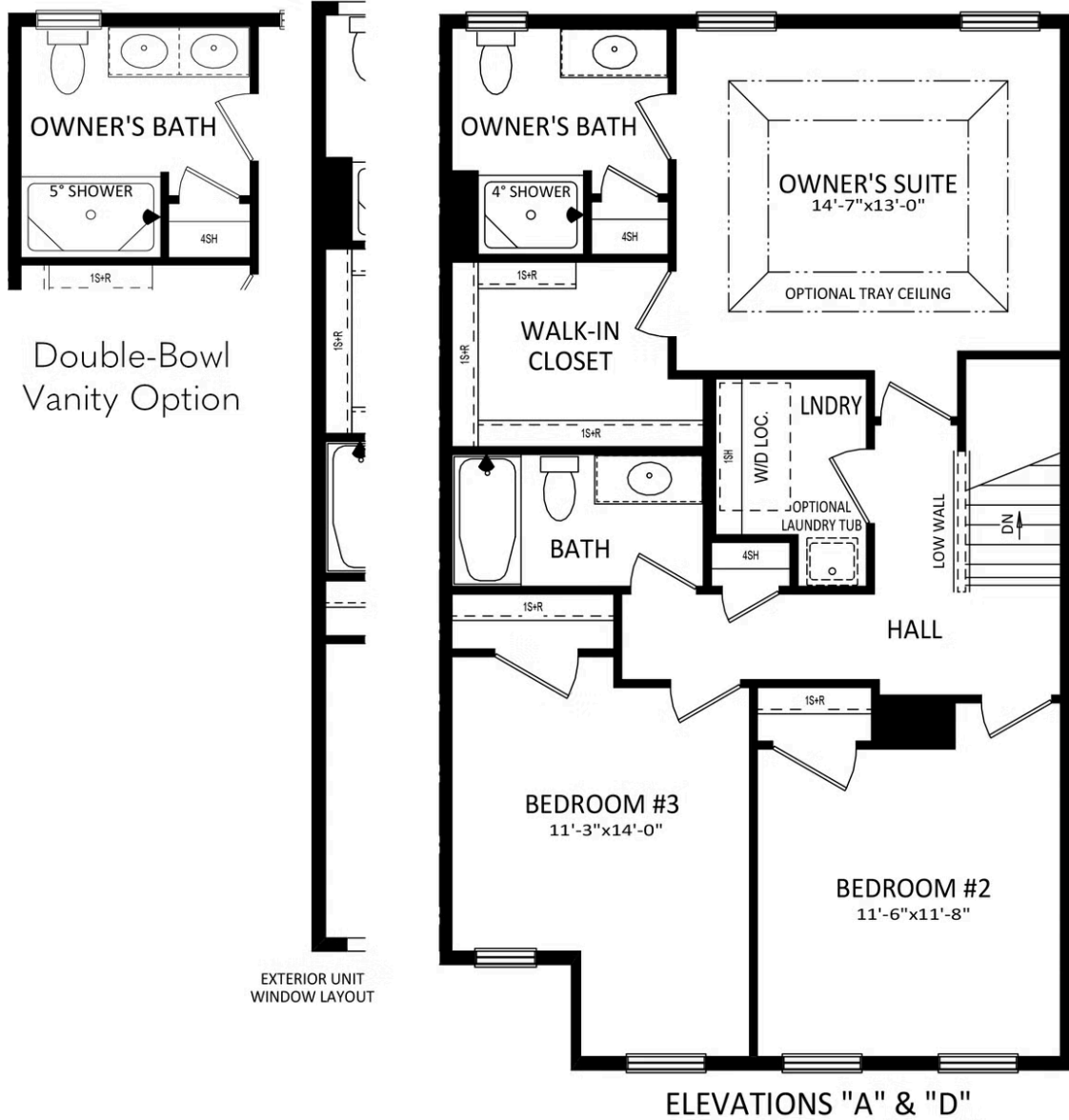


Have Questions? Ask...
KELLY

(484) 772-2693 / bhmarketing@berkshomes.com



20 Julian Drive Unit 103 LOT 32



LILY SECOND LEVEL

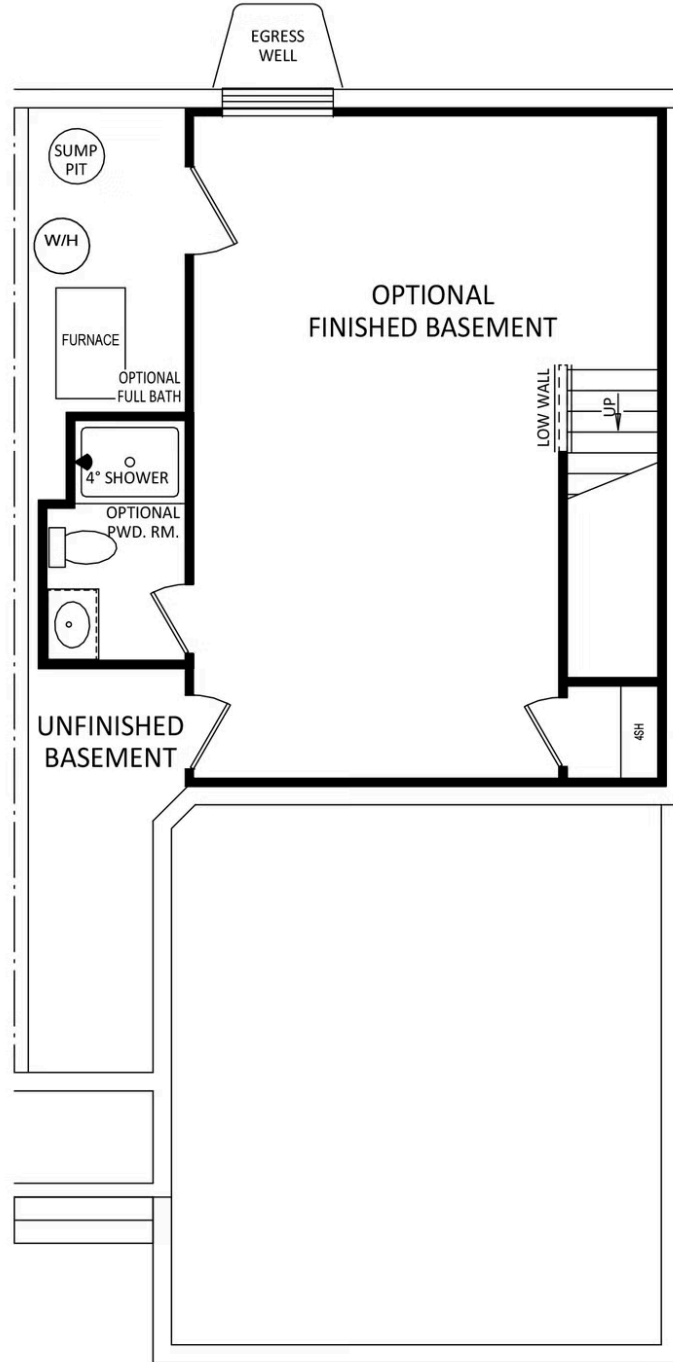


Have Questions? Ask...
KELLY

(484) 772-2693 / bhmarketing@berkshomes.com



20 Julian Drive Unit 103 LOT 32



LILY LOWER LEVEL



Have Questions? Ask...
KELLY

(484) 772-2693 / bhmarketing@berkshomes.com

