

# 8 Julian Drive, Unit 101

MODEL HOME

FLOORPLAN

**Lily**

COMMUNITY

**Horse Farm Court**



**3  
Beds**



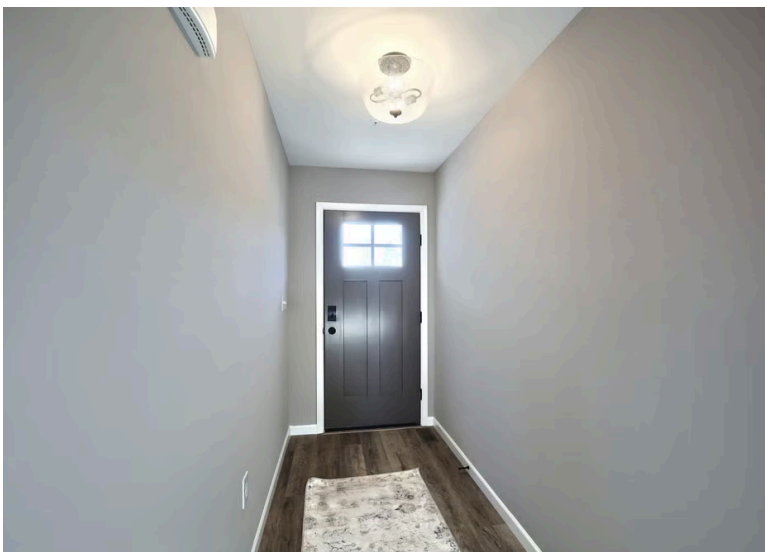
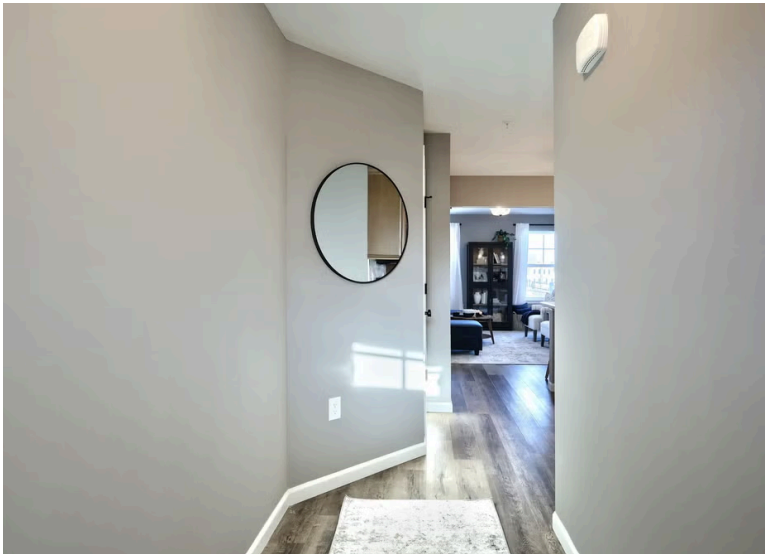
**3.5  
Baths**



**2-Car  
Garage**



**2053  
Sq. Ft.**



This end-unit townhome offers a smart, open layout with thoughtful upgrades throughout. The first floor features engineered vinyl plank flooring and a spacious family room with recessed lighting and upgraded windows for added natural light. The kitchen is designed for both everyday living and entertaining, complete with an island, quartz countertops, tile backsplash, upgraded cabinetry, stainless steel appliances, under-cabinet lighting, and recessed lighting. A breakfast area sits just off the kitchen with convenient access to the deck.

Upstairs, the owner's suite includes a tray ceiling, recessed lighting, a walk-in closet, and a private bath with a double bowl vanity. Two additional bedrooms, a full hall bath, and a second-floor laundry room provide...

## Bloomsburg School District

### Sales Office Hours

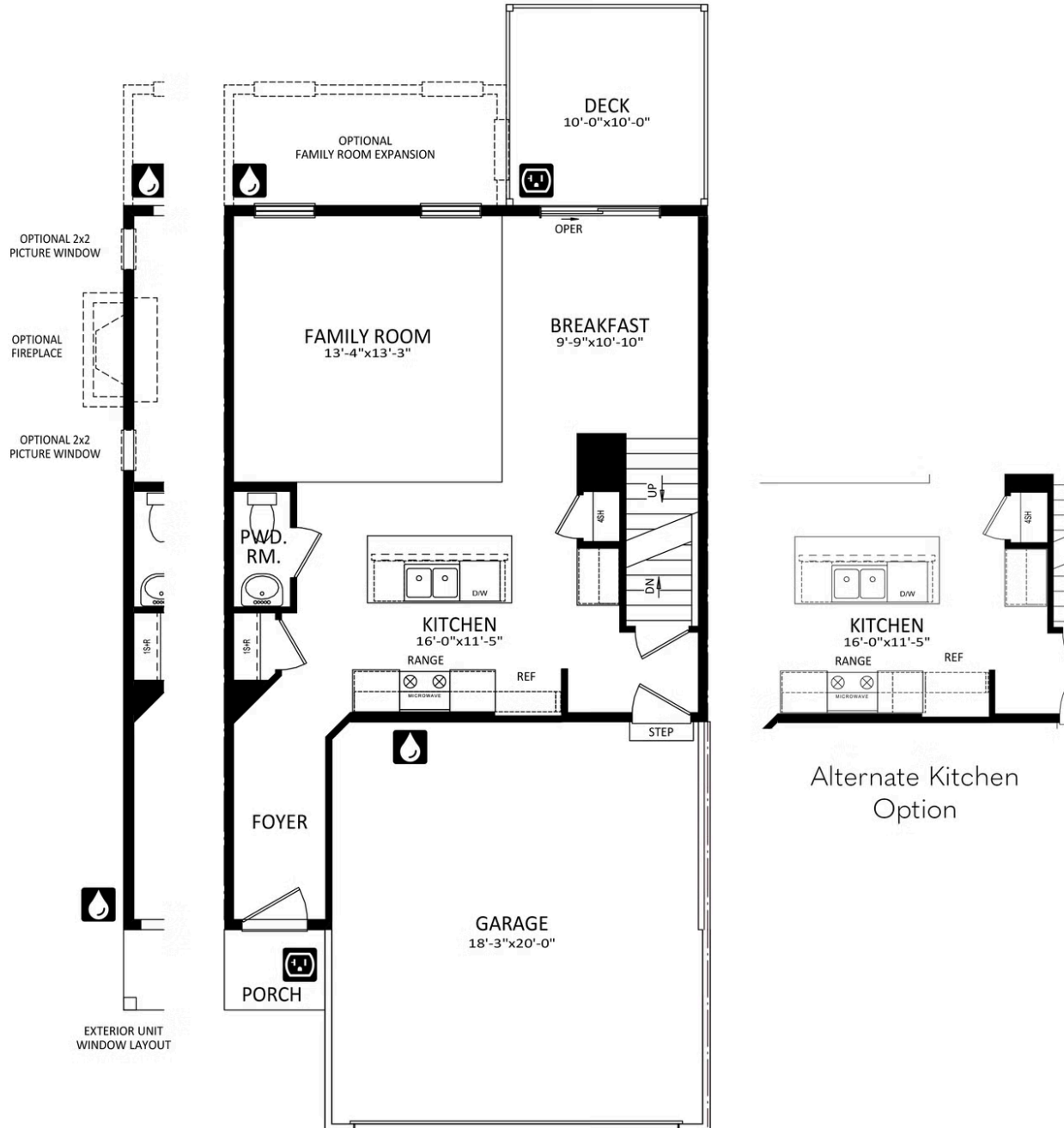
By Appointment: Open Wednesday - Saturday 10:00 am - 5:00 pm | Closed Sundays, Mondays, and Tuesdays



**Have Questions? Ask...**  
**KELLY**

(484) 772-2693 / [bhmarketing@berkshomes.com](mailto:bhmarketing@berkshomes.com)

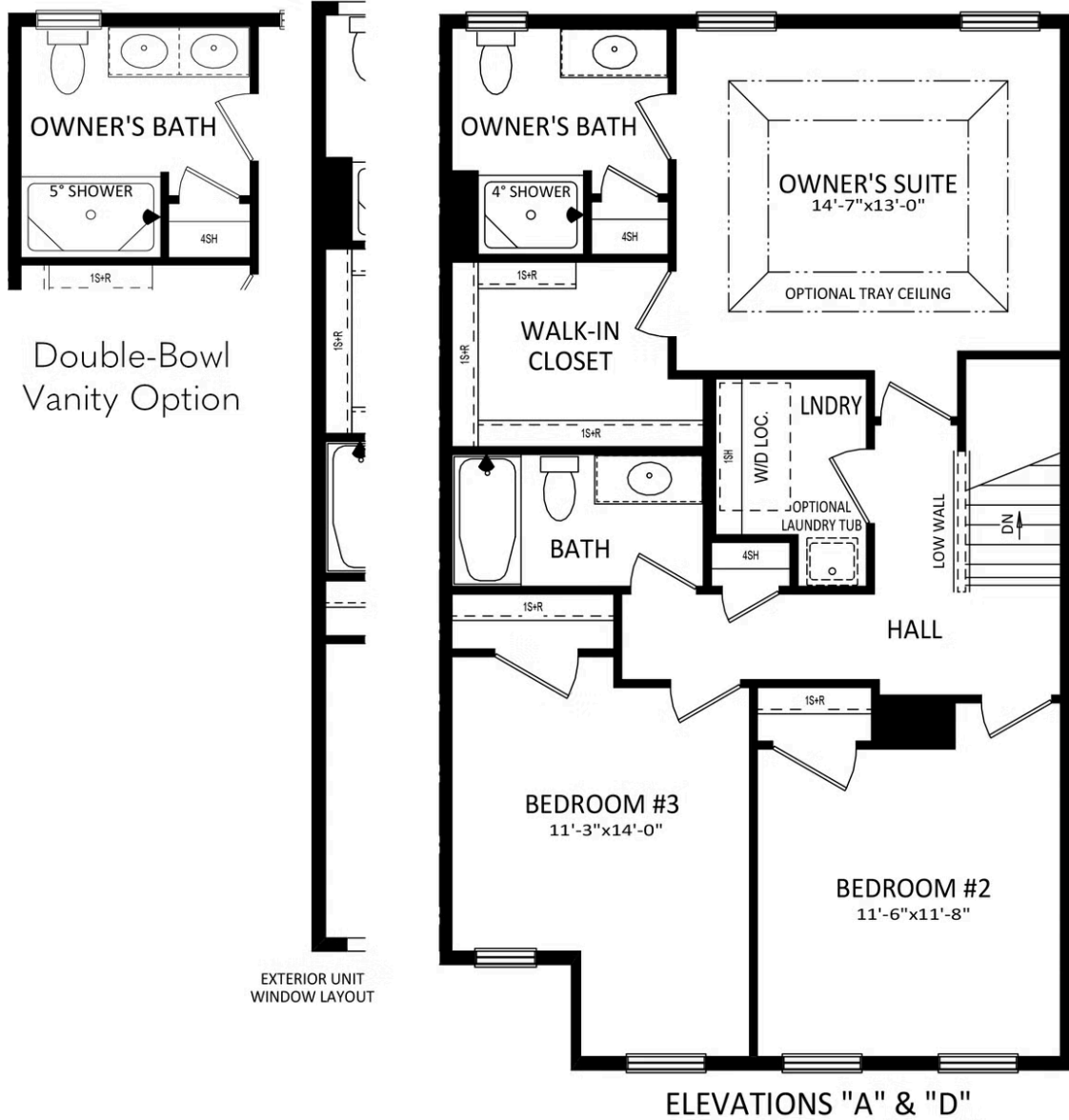




**Have Questions? Ask...**  
**KELLY**

(484) 772-2693 / [bhmarketing@berkshomes.com](mailto:bhmarketing@berkshomes.com)





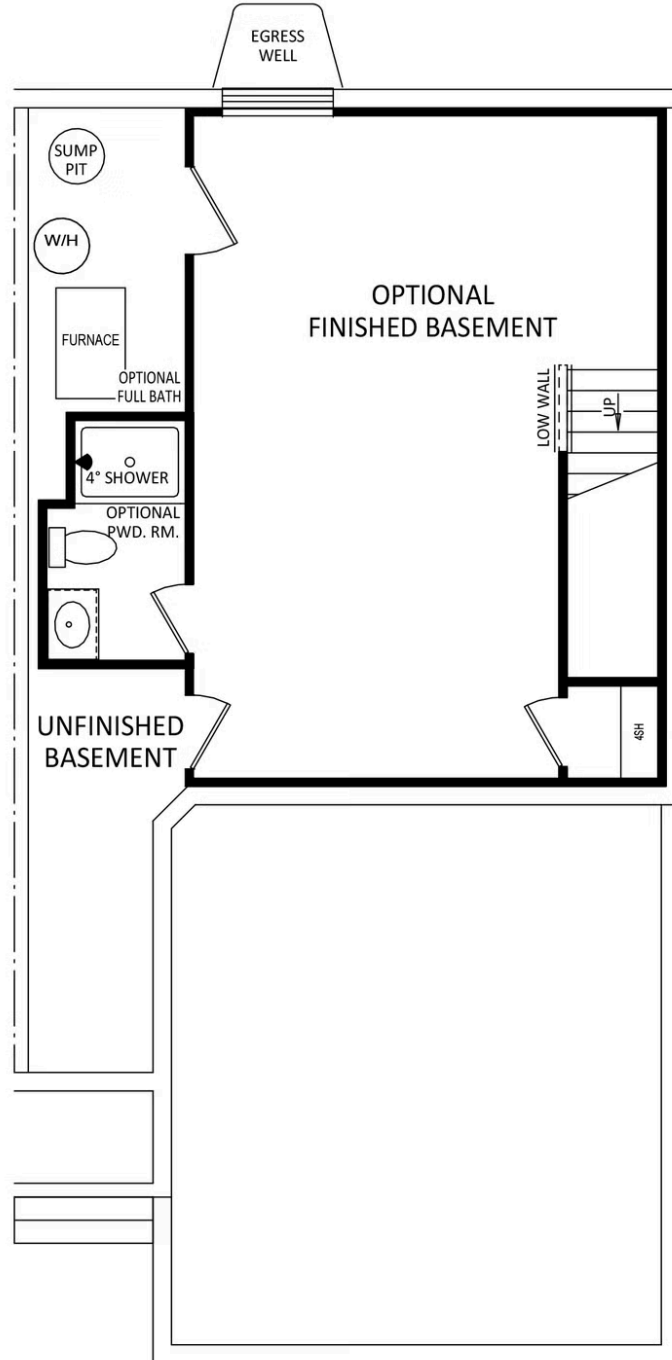
EXTERIOR UNIT WINDOW LAYOUT



**Have Questions? Ask...**  
**KELLY**

(484) 772-2693 / [bhmarketing@berkshomes.com](mailto:bhmarketing@berkshomes.com)





**Have Questions? Ask...**  
**KELLY**

(484) 772-2693 / [bhmarketing@berkshomes.com](mailto:bhmarketing@berkshomes.com)

