

Blue Ridge



COMMUNITY
**Cumberland Preserve
Estates**

PRICED
FROM
\$399,990



**4 - 5
Beds**



**2.5 -
5
Baths**



**2-Car
Garage**



**2,420
-
3,302
Sq. Ft.**

The Blue Ridge is a beautiful new home by Berks Homes with an open and airy floor plan design. Its main level features a kitchen and breakfast room that seamlessly flows into the family room, creating a central gathering space for all your family and friends to enjoy. For added versatility, this new home features a flex room to effortlessly fit any of your needs—whether you use it for a home office, workout area, or playroom. Moving to the second floor of this new home, you'll find the primary suite that offers a full bathroom and a large walk-in closet, providing a comfortable and private retreat. Additionally, a loft area, another full bathroom, and three more bedrooms make this home ideal for many homeowners. With options to expand the family room, add a morning room, select from multiple primary bath upgrade options, choose alternate kitchen layouts, or finish the basement, you have the opportunity to customize this new home by Berks Homes to fit your unique style and preferences.

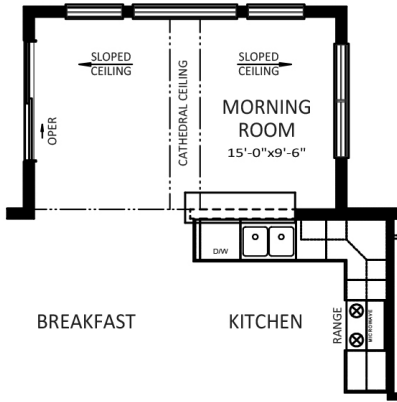


Have Questions? Ask...

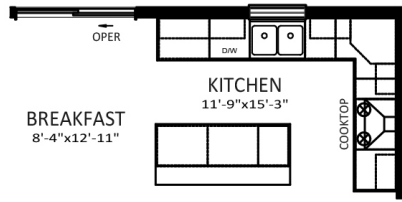
KELLY

(484) 772-2693 / bhmarketing@berkshomes.com

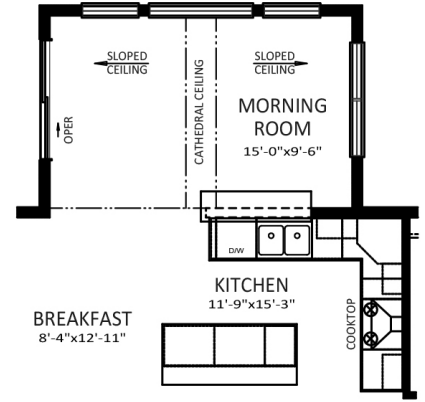
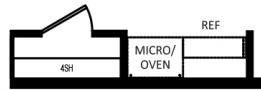




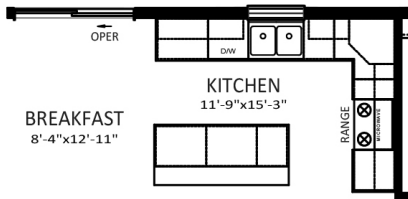
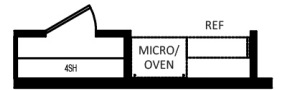
OPTIONAL MORNING ROOM



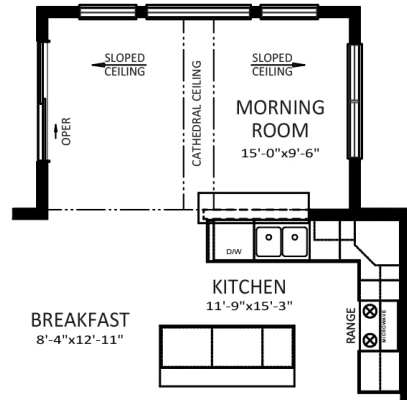
OPTIONAL GOURMET KITCHEN
ONLY AVAILABLE W/ 9' FIRST FLOOR



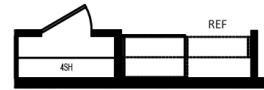
OPTIONAL GOURMET KITCHEN
WITH MORNING ROOM
ONLY AVAILABLE W/ 9' FIRST FLOOR



OPTIONAL ALTERNATE KITCHEN



OPTIONAL ALTERNATE KITCHEN
WITH MORNING ROOM



FIRST LEVEL OPTIONS

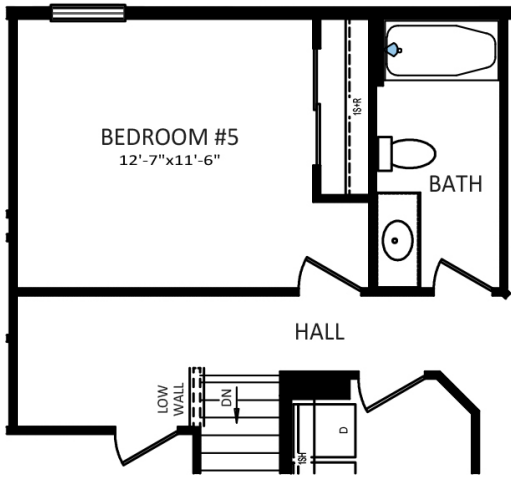


Have Questions? Ask...

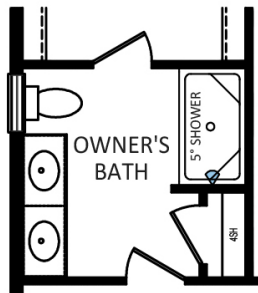
KELLY

(484) 772-2693 / bhmarketing@berkshomes.com

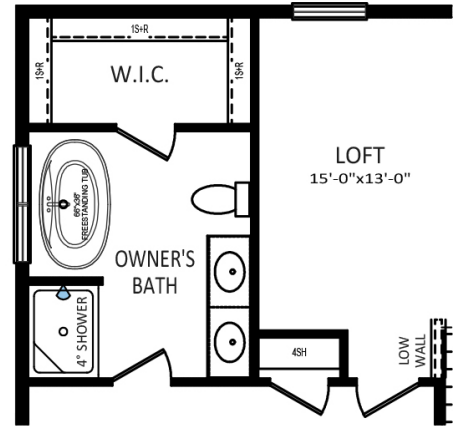




**OPTIONAL
BEDROOM ILO LOFT**
REQUIRES SECOND FLOOR EXPANSION



**OWNER'S BATH
DOUBLE BOWL
VANITY PACKAGE**



**OWNER'S BATH
SERENITY BATH PACKAGE**

SECOND LEVEL OPTIONS



Have Questions? Ask...

KELLY

(484) 772-2693 / bhmarketing@berkshomes.com

