

# Copper Beech



COMMUNITY  
**Cumberland Preserve  
Estates**

PRICED  
FROM  
**\$501,990**



**4 - 6  
Beds**



**2.5 -  
6  
Baths**



**2-Car  
Garage**



**2,920  
-  
4,226  
Sq. Ft.**

The Copper Beech is a functional and stylish 4-bedroom, 2.5-bathroom home with an open floor plan design that expertly captures what today's homeowners seek. The kitchen opens up to the breakfast area and family room, creating a seamless flow for everyday living and entertaining, while the den off the family room provides additional space for relaxation or work. The first floor of this new home also includes a formal dining room and flex room, located just inside the foyer, that offers added versatility for all of your needs. Upstairs, the primary suite boasts two walk-in closets and a full private bathroom, ensuring a comfortable and private retreat for homeowners. Three additional bedrooms, a full bathroom, and a laundry room complete the second floor, providing ample space for family members. With options to add a first-floor bedroom and full bath, choose from multiple alternate kitchen layouts, incorporate a morning room, add a loft, select from various primary bath upgrades, and finish the basement, you can personalize this home to suit your lifestyle and preferences.

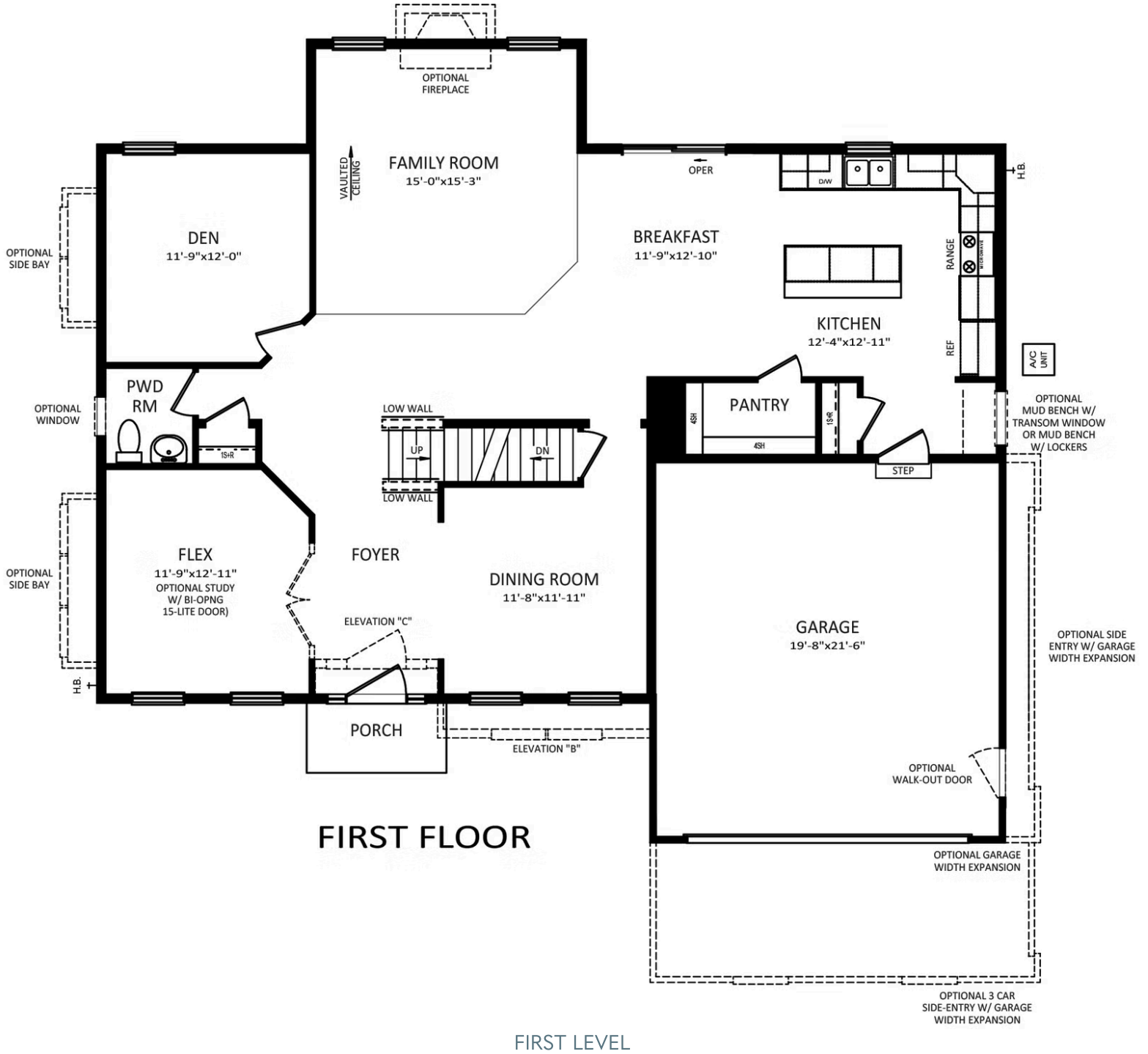


**Have Questions? Ask...**

**KELLY**

(484) 772-2693 / [bhmarketing@berkshomes.com](mailto:bhmarketing@berkshomes.com)



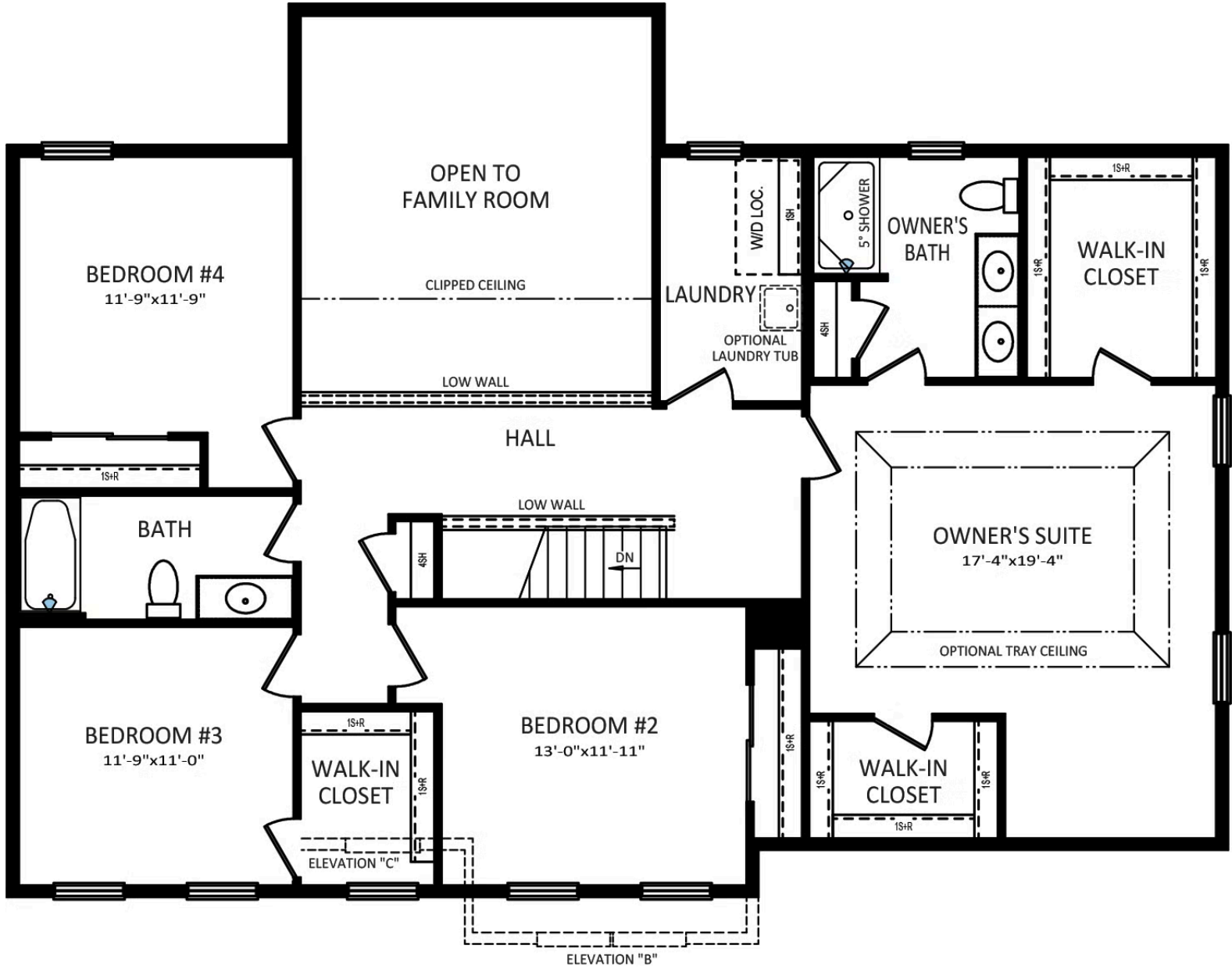


**Have Questions? Ask...**

KELLY

(484) 772-2693 / bhmarketing@berkshomes.com





## SECOND FLOOR

SECOND LEVEL

Have Questions? Ask...

KELLY

(484) 772-2693 / [bhmarketing@berkshomes.com](mailto:bhmarketing@berkshomes.com)



OPTIONAL FINISHED BASEMENT  
+72 SQ. FT.  
(WITH BEDROOM #5 OPTION)

OPTIONAL  
FINISHED BASEMENT  
746 SQ. FT.

OPTIONAL  
PWD. RM.

OPTIONAL  
FULL BATH

SUMP  
PIT

UNFINISHED  
BASEMENT

FURNACE

W/H

EGRESS  
WELL

15+R

UP

## FOUNDATION

LOWER LEVEL

**Have Questions? Ask...**

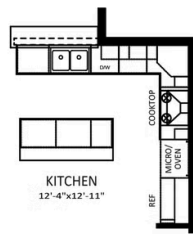
KELLY

(484) 772-2693 / [bhmarketing@berkshomes.com](mailto:bhmarketing@berkshomes.com)





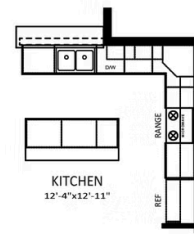
OPTIONAL  
GOURMET KITCHEN



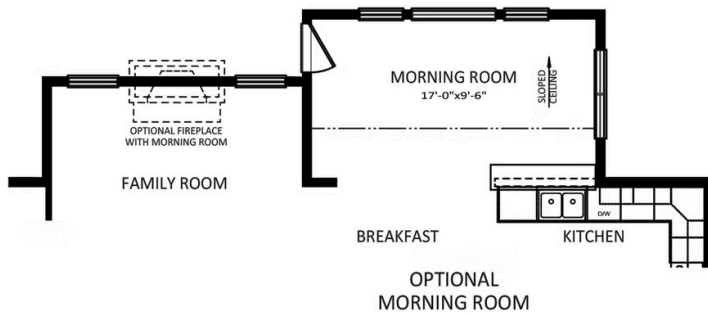
OPTIONAL GOURMET KITCHEN  
WITH MORNING ROOM



OPTIONAL  
ALTERNATE KITCHEN



OPTIONAL ALTERNATE KITCHEN  
WITH MORNING ROOM



OPTIONAL  
MORNING ROOM



OPTIONAL FIRST FLOOR  
BEDROOM AND BATH ADDITION

## FIRST LEVEL OPTIONS

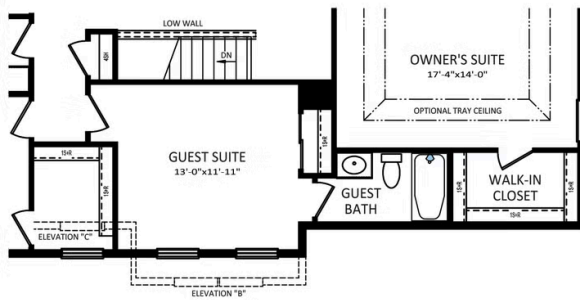


**Have Questions? Ask...**

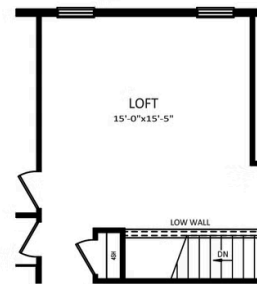
KELLY

(484) 772-2693 / [bhmarketing@berkshomes.com](mailto:bhmarketing@berkshomes.com)

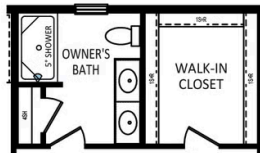




OPTIONAL GUEST SUITE



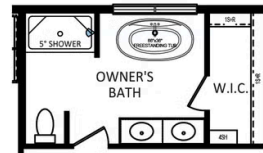
OPTIONAL LOFT ADDITION



OPTIONAL OWNER'S BATH  
DOUBLE BOWL VANITY PACKAGE



OPTIONAL OWNER'S BATH  
LUXURY BATH PACKAGE



OPTIONAL OWNER'S BATH  
SERENITY BATH PACKAGE

## SECOND LEVEL OPTIONS



**Have Questions? Ask...**

KELLY

(484) 772-2693 / [bhmarketing@berkshomes.com](mailto:bhmarketing@berkshomes.com)

