

Georgia Mae

COMMUNITY
**Cumberland Preserve
Estates**

PRICED
FROM
\$469,990



**3
Beds**



**2 -
3.5
Baths**



**2-Car
Garage**



**2,053
-
2,969
Sq. Ft.**

The Georgia Mae is a beautiful one-story new home with 3 bedrooms and 2 bathrooms. Its open floor plan creates a seamless, easy flow between the foyer, dining room, family room, breakfast area, and kitchen—creating a central space for entertaining friends and family. The primary suite offers an incredible walk-in closet and a full private bath—allowing you to end each day with maximum tranquility. Additionally, you'll find a convenient laundry room that provides access to the 2-car garage, helping create a seamless transition throughout every part of this home. Two additional bedrooms with a full bath complete The Georgia Mae, perfect for kids, guests, or flexible living spaces. With options to choose alternate kitchen layouts, expand the breakfast area, incorporate a morning room, select from multiple primary bath upgrades, and finish the basement—you can personalize this new Berks home to suit your style and preferences.

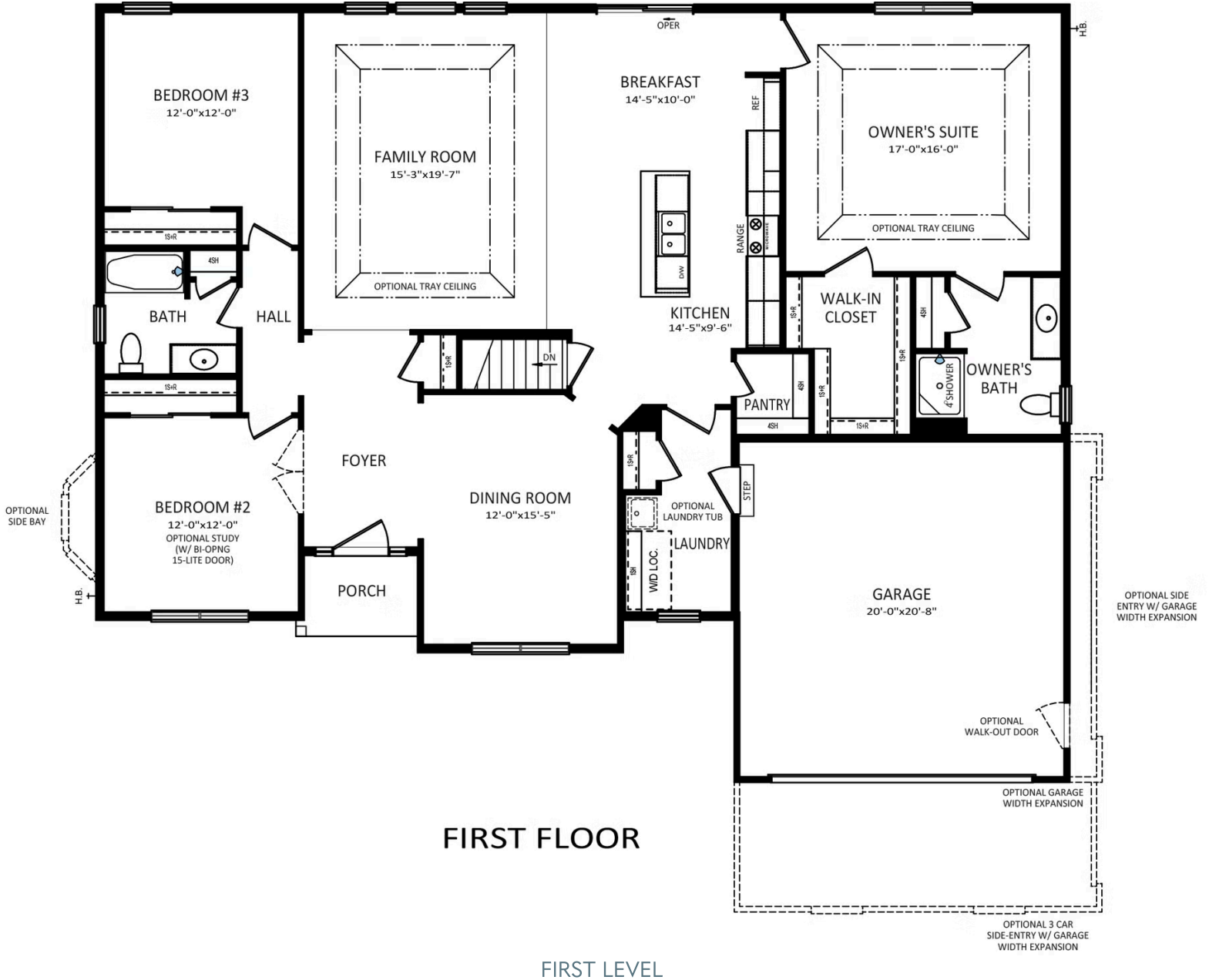


Have Questions? Ask...

KELLY

(484) 772-2693 / bhmarketing@berkshomes.com



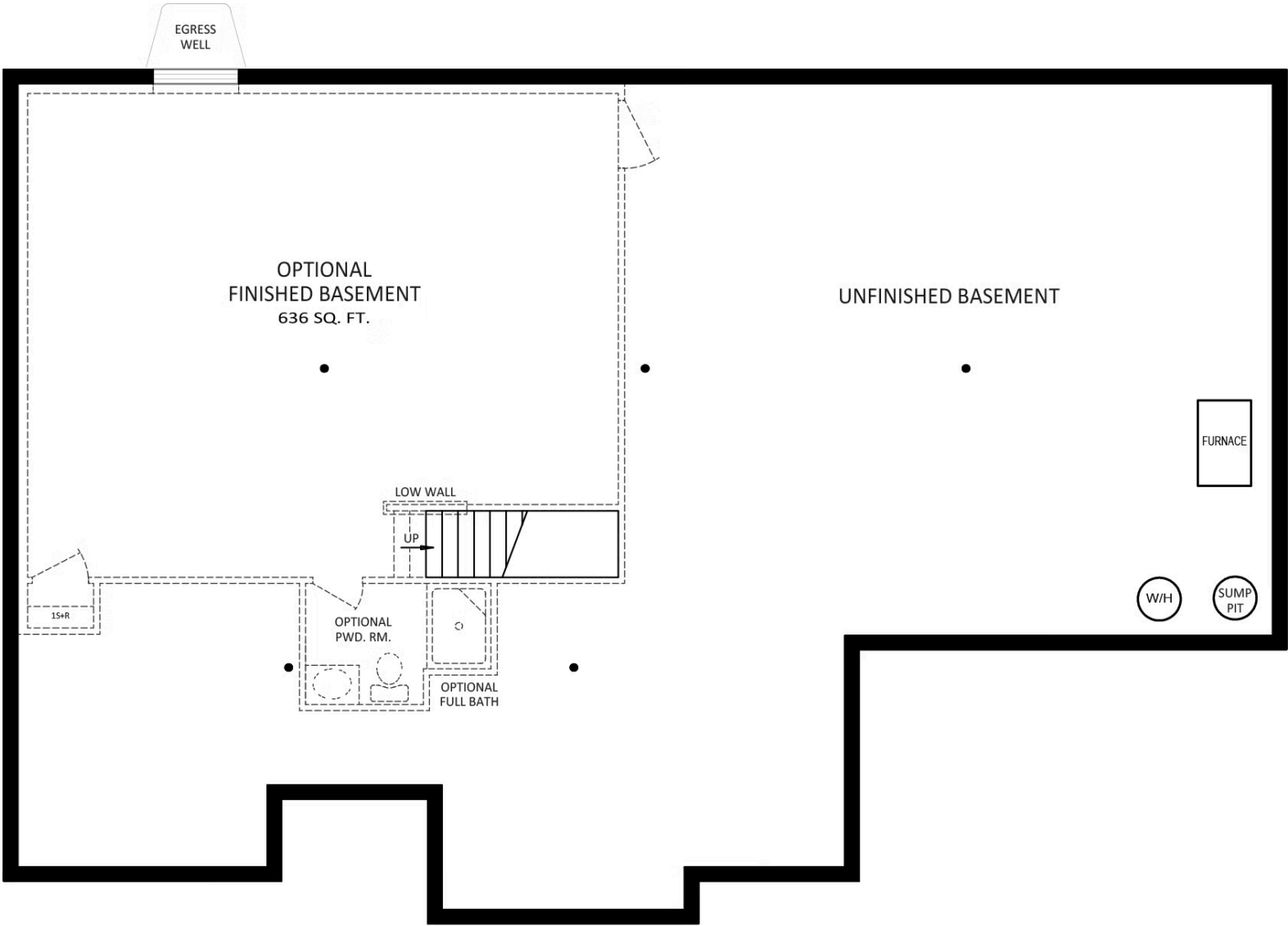


Have Questions? Ask...

KELLY

(484) 772-2693 / bhmarketing@berkshomes.com





FOUNDATION LOWER LEVEL

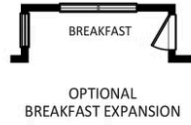


Have Questions? Ask...

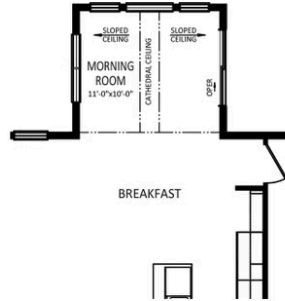
KELLY

(484) 772-2693 / bhmarketing@berkshomes.com

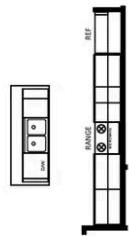




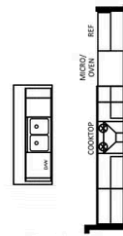
OPTIONAL
BREAKFAST EXPANSION



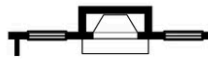
OPTIONAL MORNING ROOM



OPTIONAL
ALTERNATE KITCHEN



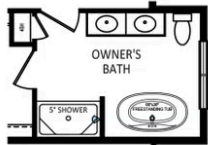
OPTIONAL
GOURMET KITCHEN



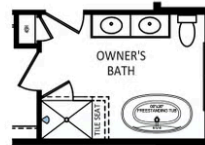
OPTIONAL
FIREPLACE



OWNER'S BATH DOUBLE
BOWL VANITY PACKAGE



OWNER'S BATH
SERENITY BATH PACKAGE
W/ EXPANSION



OWNER'S BATH
LUXURY BATH PACKAGE
W/ EXPANSION

FIRST LEVEL OPTIONS



Have Questions? Ask...

KELLY

(484) 772-2693 / bhmarketing@berkshomes.com

