



COMMUNITY  
**Cumberland Preserve  
Estates**

PRICED  
FROM  
**\$489,990**



**4  
Beds**



**2.5 - 3.5  
Baths**



**2,633 -  
3,702  
Sq. Ft.**

The Molly is a highly desirable new Berks home with 4 bedrooms and 2.5 bathrooms—designed with both comfort and functionality in mind. The family room, which opens to the kitchen and breakfast area, creates a seamless flow for everyday living. Additionally, a separate dining room and flex room offer versatile spaces that can be customized to suit your lifestyle. The hallway off the kitchen leads to the first-floor primary suite, complete with a walk-in closet and a private bath—providing a peaceful retreat that all types of homeowners will appreciate. Upstairs, you'll find three additional bedrooms, a full bath, and a hall area that looks open to the family room below—which helps maintain an open and connected feel throughout the home. With options to choose alternate kitchen layouts, upgrade the primary bath, add a loft instead of the fourth bedroom, and finish the basement—you certainly have the flexibility to personalize this home to your liking and create a space that perfectly suits your needs.



**Have Questions? Ask...**

**KELLY**

(484) 772-2693 / [bhmarketing@berkshomes.com](mailto:bhmarketing@berkshomes.com)





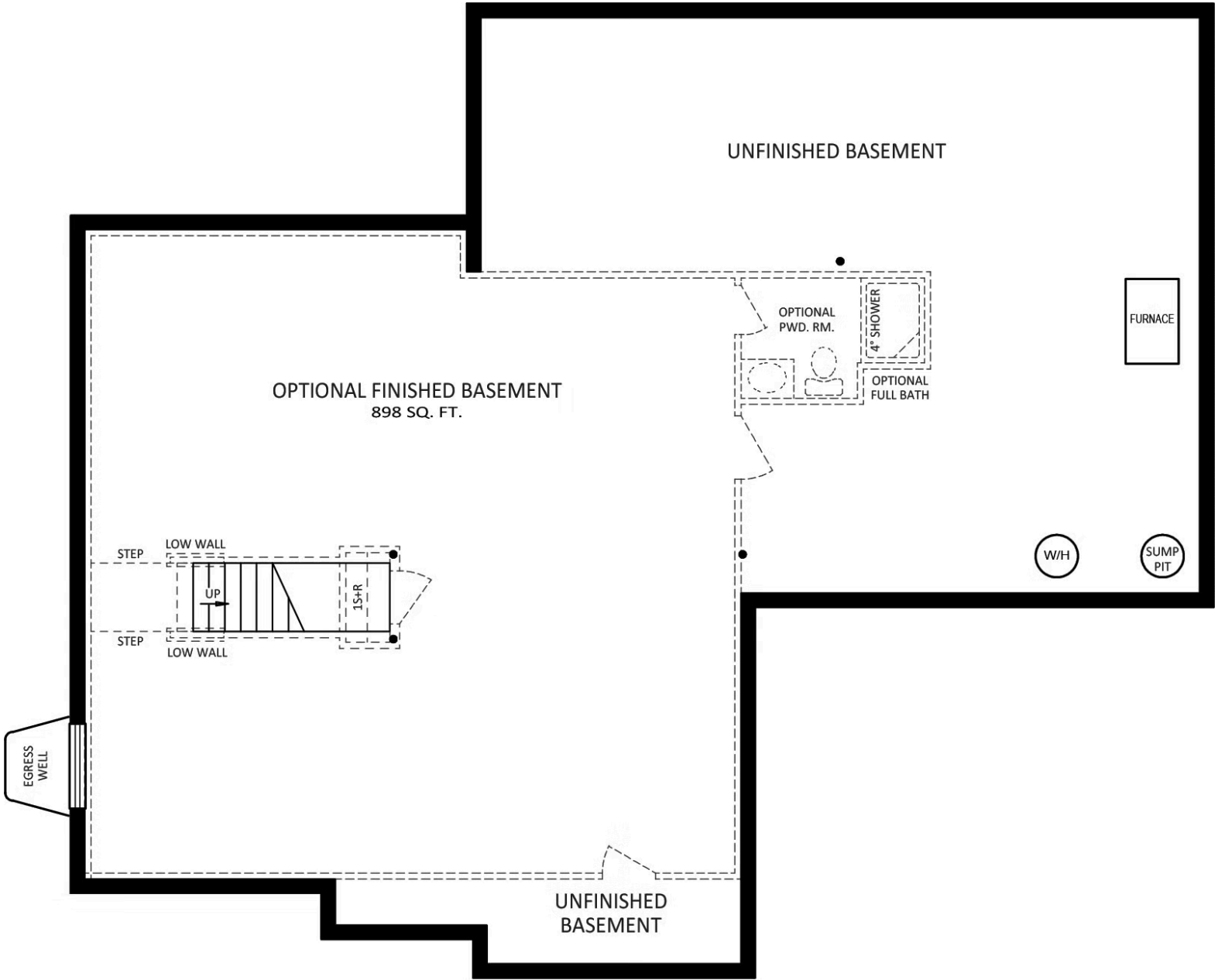
**Have Questions? Ask...**

KELLY

(484) 772-2693 / bhmarketing@berkshomes.com







# FOUNDATION

MOLLY LOWER LEVEL

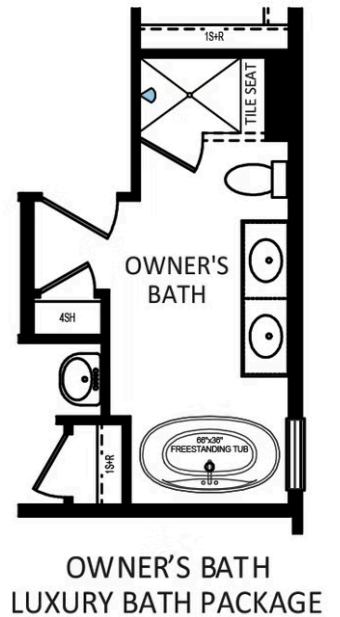
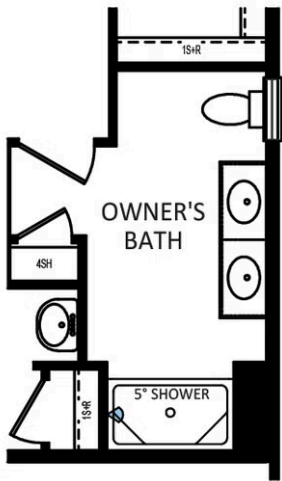
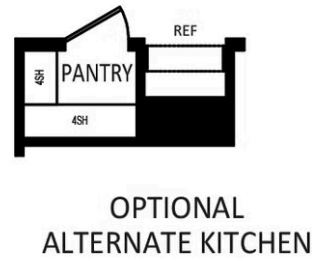
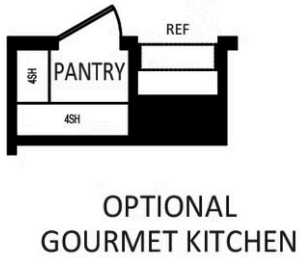
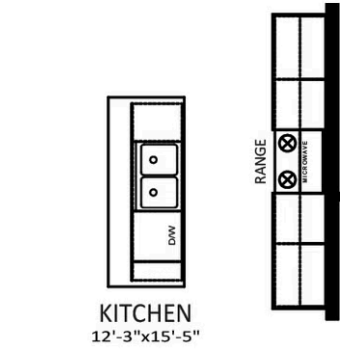
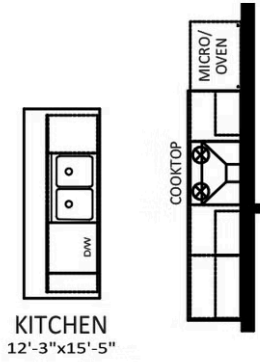


**Have Questions? Ask...**

**KELLY**

(484) 772-2693 / [bhmarketing@berkshomes.com](mailto:bhmarketing@berkshomes.com)





**MOLLY OPTIONS**

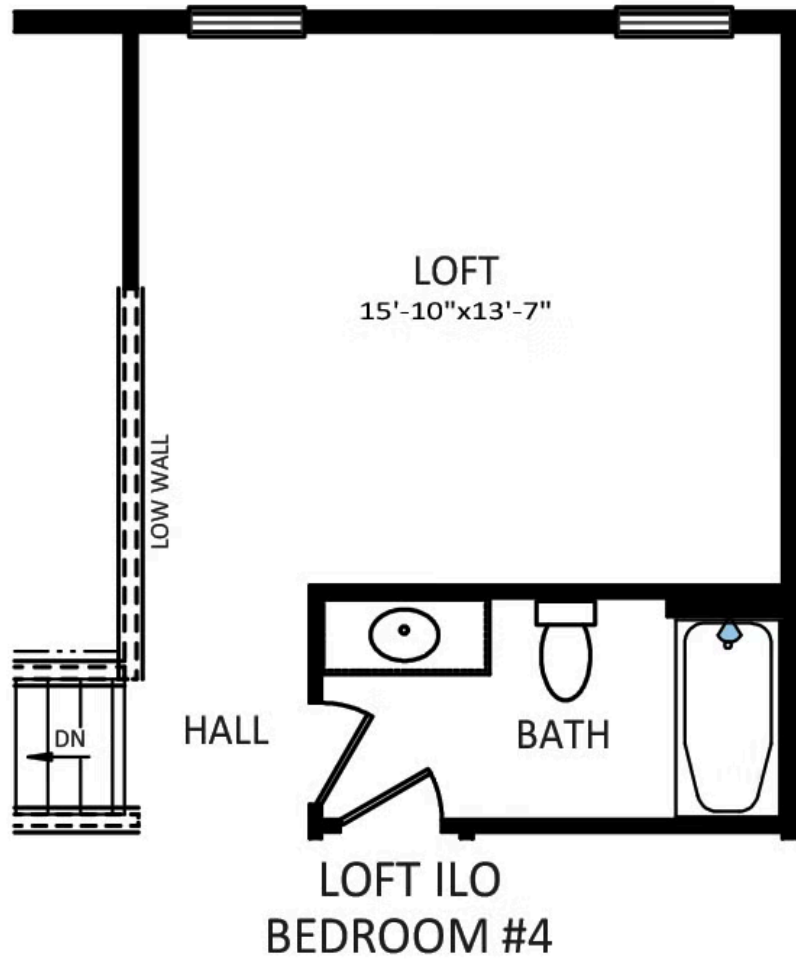


**Have Questions? Ask...**

**KELLY**

(484) 772-2693 / [bhmarketing@berkshomes.com](mailto:bhmarketing@berkshomes.com)





MOLLY SECOND LEVEL OPTIONS

**Have Questions? Ask...**

KELLY

(484) 772-2693 / [bhmarketing@berkshomes.com](mailto:bhmarketing@berkshomes.com)

