

The **Cumberland** Floorplan

Build On Your Land



2,500
Sq.Ft.



3
Bedrooms



2.5
Bathrooms



1
Stories



2
Car Garage

The Cumberland, the largest one-story home offered in our Berks Homes floorplan lineup, boasts a grand layout and spacious design where luxury awaits at every turn. The family room opens up to the kitchen creating a wonderfully expansive space that is great for everyday living and versatile enough for any of your entertaining needs. The large owner's suite has not one, but two walk-in closets and a bath that includes a standard double-bowl vanity and relaxing window seat. Not to be outdone, the 2nd and 3rd bedrooms share a convenient Jack & Jill bath with double-bowl vanity as well. A formal dining room and flex space round out the layout of this wonderful home. But it doesn't stop there. You can upgrade to the gourmet kitchen, a soaking tub in the owner's bath or enjoy your morning cup of coffee in style when you add a sun-drenched morning room to this home's already impressive design. Any way you slice it, the Cumberland is one-story living at its best!

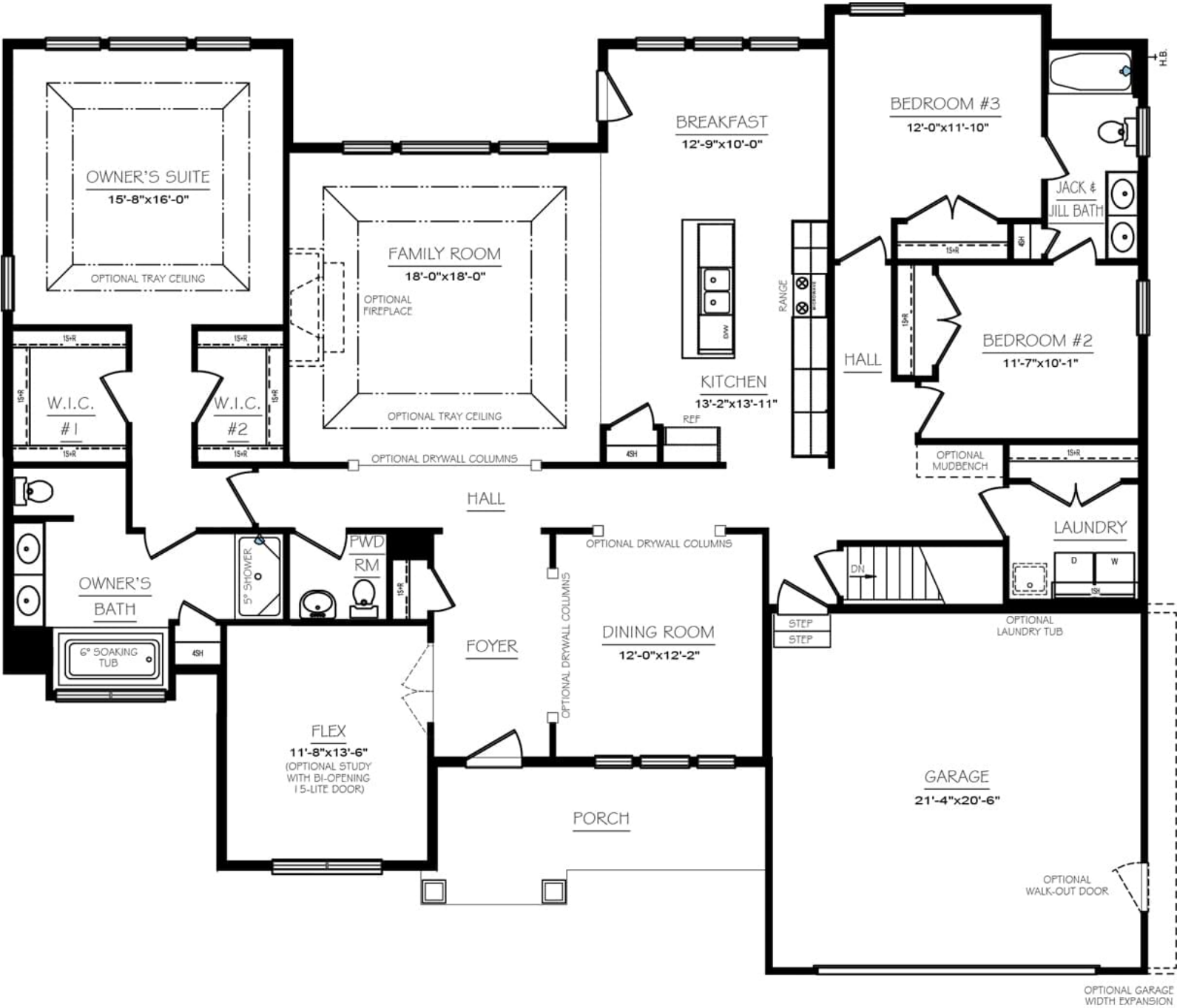
QUESTIONS? onyourland@berkshomes.com



In continuous effort by Berks Homes to improve the quality of your home, we reserve the right to change features, prices, plans and specifications without notice. Floorplans and elevation renderings are artists' conceptions only. Significant changes may be made during or after the construction of the model homes. Berks Homes reserves the right to modify, relocate or eliminate any or all of the features, specifications, plan utilities, design or shape thereof, all without notice or obligations to any purchaser. Price range reflects base price only. Location premiums will be charged for certain locations and are not included in the base price of the home. Additional association fees may apply. Other fees may also apply. Amenities are proposed and planned or may be under construction. All square footages are approximate square footages of the total livable space. Water heater location deemed per city municipality code. Please see your onsite sales associate for additional information and more details. © 2022 Berks Homes. Current information as 16th May 2022

The Cumberland Floorplan

Build On Your Land



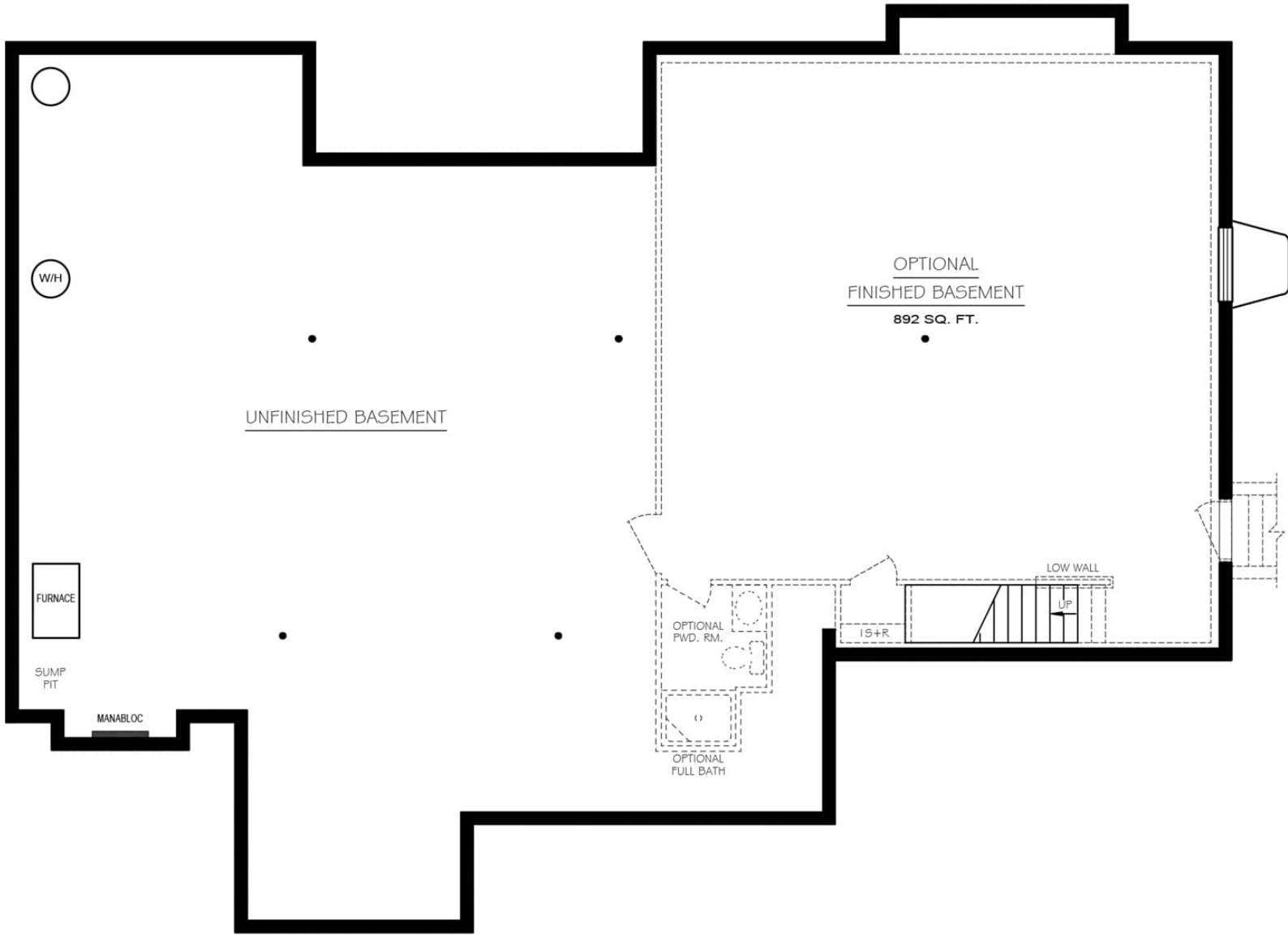
First Level



In continuous effort by Berks Homes to improve the quality of your home, we reserve the right to change features, prices, plans and specifications without notice. Floorplans and elevation renderings are artists' conceptions only. Significant changes may be made during or after the construction of the model homes. Berks Homes reserves the right to modify, relocate or eliminate any or all of the features, specifications, plan utilities, design or shape thereof, all without notice or obligations to any purchaser. Price range reflects base price only. Location premiums will be charged for certain locations and are not included in the base price of the home. Additional association fees may apply. Other fees may also apply. Amenities are proposed and planned or may be under construction. All square footages are approximate square footages of the total livable space. Water heater location deemed per city municipality code. Please see your onsite sales associate for additional information and more details. © 2022 Berks Homes. Current information as 16th May 2022

The **Cumberland** Floorplan

Build On Your Land



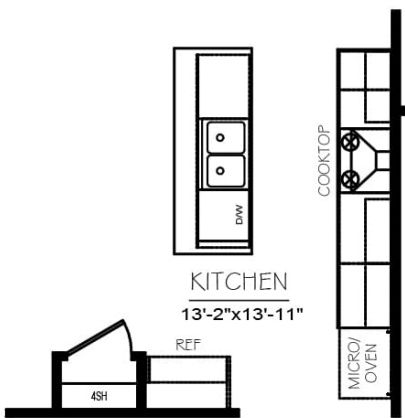
Lower Level



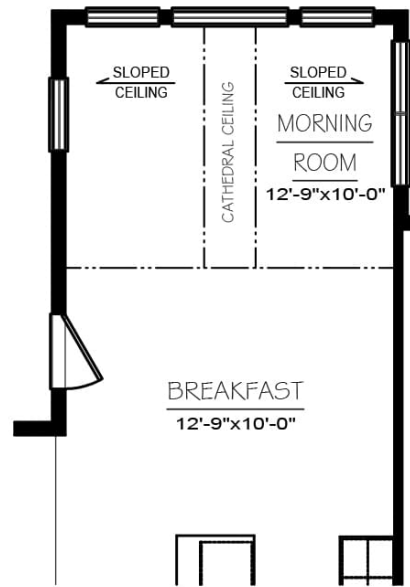
In continuous effort by Berks Homes to improve the quality of your home, we reserve the right to change features, prices, plans and specifications without notice. Floorplans and elevation renderings are artists' conceptions only. Significant changes may be made during or after the construction of the model homes. Berks Homes reserves the right to modify, relocate or eliminate any or all of the features, specifications, plan utilities, design or shape thereof, all without notice or obligations to any purchaser. Price range reflects base price only. Location premiums will be charged for certain locations and are not included in the base price of the home. Additional association fees may apply. Other fees may also apply. Amenities are proposed and planned or may be under construction. All square footages are approximate square footages of the total livable space. Water heater location deemed per city municipality code. Please see your onsite sales associate for additional information and more details. © 2022 Berks Homes. Current information as 16th May 2022

The **Cumberland** Floorplan

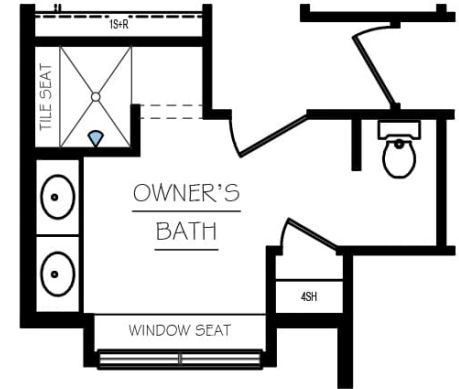
Build On Your Land



OPTIONAL
GOURMET KITCHEN



OPTIONAL MORNING ROOM



OPTIONAL
OWNER'S BATH
WALK-IN SHOWER

First Level Options



In continuous effort by Berks Homes to improve the quality of your home, we reserve the right to change features, prices, plans and specifications without notice. Floorplans and elevation renderings are artists' conceptions only. Significant changes may be made during or after the construction of the model homes. Berks Homes reserves the right to modify, relocate or eliminate any or all of the features, specifications, plan utilities, design or shape thereof, all without notice or obligations to any purchaser. Price range reflects base price only. Location premiums will be charged for certain locations and are not included in the base price of the home. Additional association fees may apply. Other fees may also apply. Amenities are proposed and planned or may be under construction. All square footages are approximate square footages of the total livable space. Water heater location deemed per city municipality code. Please see your onsite sales associate for additional information and more details. © 2022 Berks Homes. Current information as 16th May 2022