

The Georgia Mae Floorplan

Hampton Heights Singles



From \$422,990



2,053
Sq.Ft.



3
Bedrooms



2.0
Bathrooms



1
Stories



2
Car Garage

This model is named after one of our owner's granddaughters, Georgia Mae. She is just plain fun. She's bubbly, opinionated, loves to eat, and always makes you feel right at home. This floorplan is no different. It has more than 2000 sqft, 3 bedrooms, 2 bathrooms, and has options for days. This house comes with personality, but the choice is yours in how to make it your own. You could expand the breakfast nook, add a morning room, upgrade your kitchen, make the ceiling vaulted in the family room, add more garage space, and a whole lot more. We couldn't design this house without a stellar kitchen because the real Georgia Mae spends a lot of her time there. We included a big island, a walk-in pantry, and counterspace galore. Come see if the Georgia Mae could be the perfect home for you.

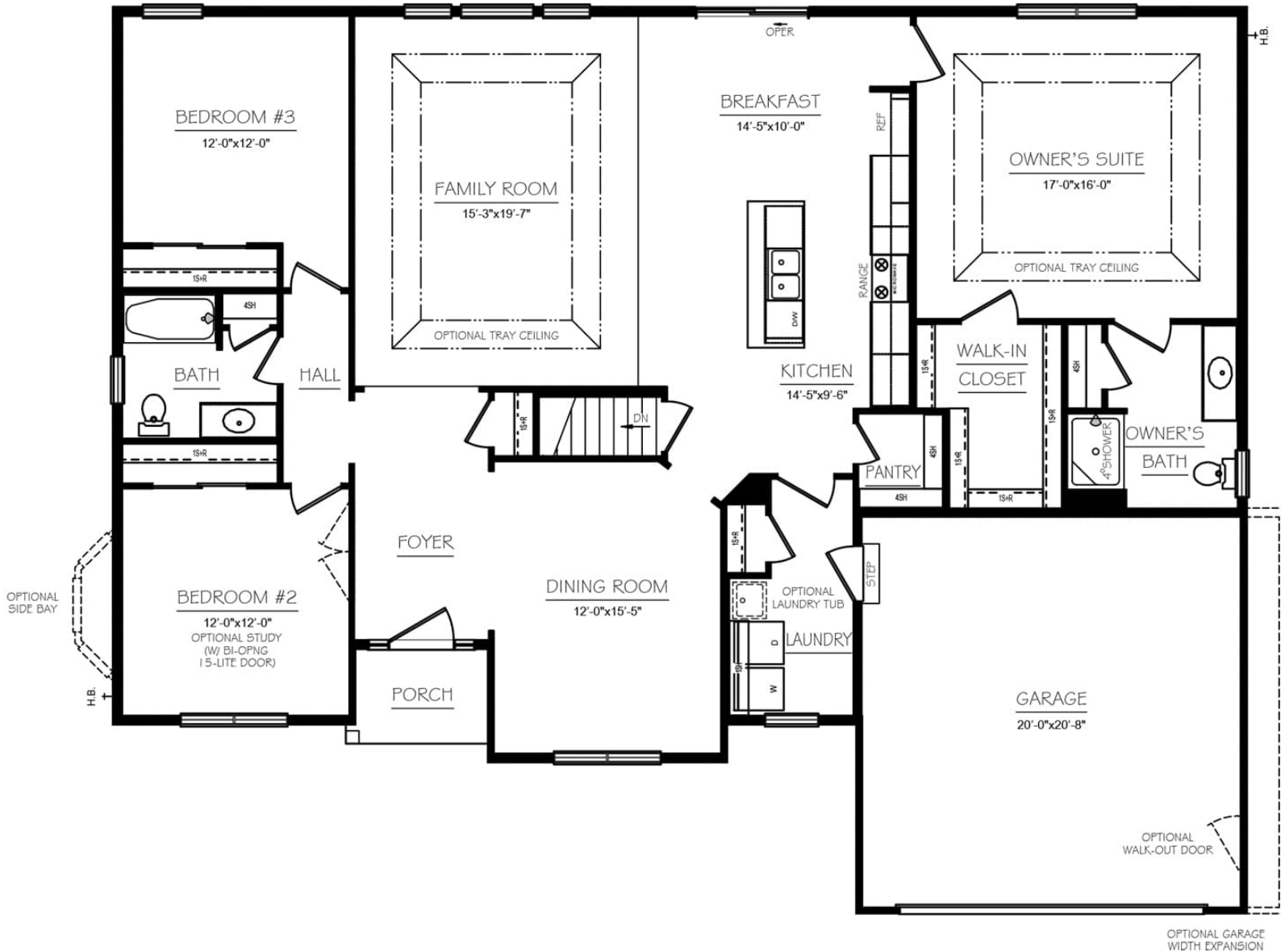
QUESTIONS? helloosc@berkshomes.com



In continuous effort by Berks Homes to improve the quality of your home, we reserve the right to change features, prices, plans and specifications without notice. Floorplans and elevation renderings are artists' conceptions only. Significant changes may be made during or after the construction of the model homes. Berks Homes reserves the right to modify, relocate or eliminate any or all of the features, specifications, plan utilities, design or shape thereof, all without notice or obligations to any purchaser. Price range reflects base price only. Location premiums will be charged for certain locations and are not included in the base price of the home. Additional association fees may apply. Other fees may also apply. Amenities are proposed and planned or may be under construction. All square footages are approximate square footages of the total livable space. Water heater location deemed per city municipality code. Please see your onsite sales associate for additional information and more details. © 2022 Berks Homes. Current information as 1st December 2022

The Georgia Mae Floorplan

Hampton Heights Singles



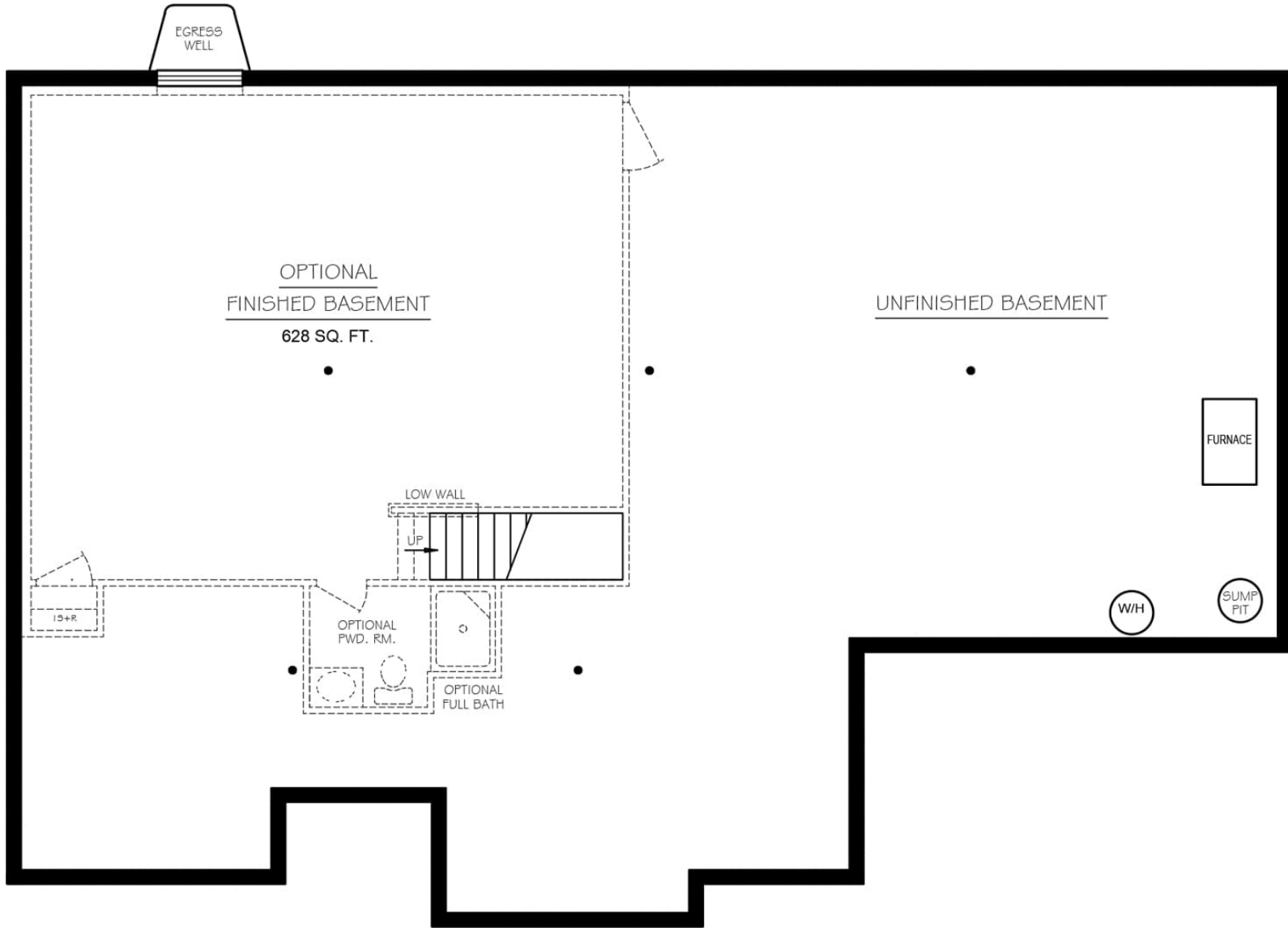
First Level



In continuous effort by Berks Homes to improve the quality of your home, we reserve the right to change features, prices, plans and specifications without notice. Floorplans and elevation renderings are artists' conceptions only. Significant changes may be made during or after the construction of the model homes. Berks Homes reserves the right to modify, relocate or eliminate any or all of the features, specifications, plan utilities, design or shape thereof, all without notice or obligations to any purchaser. Price range reflects base price only. Location premiums will be charged for certain locations and are not included in the base price of the home. Additional association fees may apply. Other fees may also apply. Amenities are proposed and planned or may be under construction. All square footages are approximate square footages of the total livable space. Water heater location deemed per city municipality code. Please see your onsite sales associate for additional information and more details. © 2022 Berks Homes. Current information as 1st December 2022

The Georgia Mae Floorplan

Hampton Heights Singles



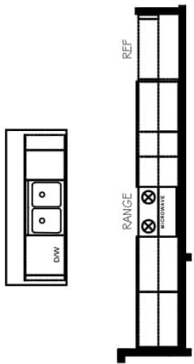
Lower Level



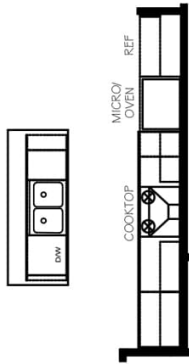
In continuous effort by Berks Homes to improve the quality of your home, we reserve the right to change features, prices, plans and specifications without notice. Floorplans and elevation renderings are artists' conceptions only. Significant changes may be made during or after the construction of the model homes. Berks Homes reserves the right to modify, relocate or eliminate any or all of the features, specifications, plan utilities, design or shape thereof, all without notice or obligations to any purchaser. Price range reflects base price only. Location premiums will be charged for certain locations and are not included in the base price of the home. Additional association fees may apply. Other fees may also apply. Amenities are proposed and planned or may be under construction. All square footages are approximate square footages of the total livable space. Water heater location deemed per city municipality code. Please see your onsite sales associate for additional information and more details. © 2022 Berks Homes. Current information as 1st December 2022

The Georgia Mae Floorplan

Hampton Heights Singles



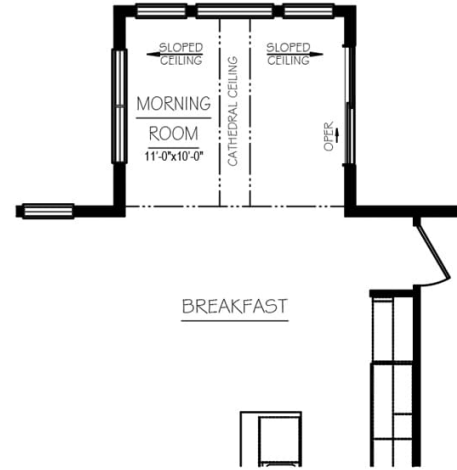
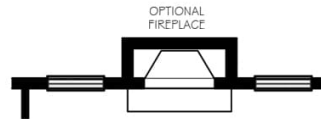
OPTIONAL
ALTERNATE KITCHEN



OPTIONAL
GOURMET KITCHEN



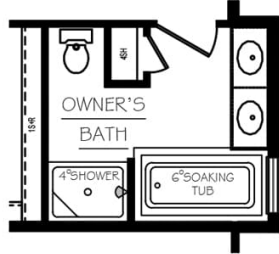
OPTIONAL
BREAKFAST EXPANSION



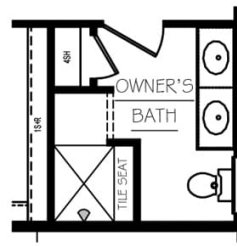
OPTIONAL MORNING ROOM



OWNER'S BATH DOUBLE
BOWL VANITY PACKAGE



OWNER'S BATH
SOAKING TUB PACKAGE



OWNER'S BATH
WALK-IN TILE SHOWER

First Level Options



In continuous effort by Berks Homes to improve the quality of your home, we reserve the right to change features, prices, plans and specifications without notice. Floorplans and elevation renderings are artists' conceptions only. Significant changes may be made during or after the construction of the model homes. Berks Homes reserves the right to modify, relocate or eliminate any or all of the features, specifications, plan utilities, design or shape thereof, all without notice or obligations to any purchaser. Price range reflects base price only. Location premiums will be charged for certain locations and are not included in the base price of the home. Additional association fees may apply. Other fees may also apply. Amenities are proposed and planned or may be under construction. All square footages are approximate square footages of the total livable space. Water heater location deemed per city municipality code. Please see your onsite sales associate for additional information and more details. © 2022 Berks Homes. Current information as 1st December 2022