

The Copper Beech Floorplan

Morgan's Crossing Singles



From \$449,990



2,938
Sq.Ft.



4
Bedrooms



2.5
Bathrooms



2
Stories



2
Car Garage

This plan is meant to give you options. There are three different elevations, which means you get to choose the look and feel of your home. Besides the elevations, you could finish the basement, add a walk-in shower in the owner's suite, add a morning room, a guest suite, and/or a loft, or upgrade your kitchen. Don't get us wrong though, the standard plan is impressive on its own. With almost 3,000 sqft of space, there's a little something for everyone (mostly because with that much room, you can fit pretty much everyone). It's got 4 beds, 3 baths, and a design that not only looks great but feels great too. Come check out the Copper Beech!

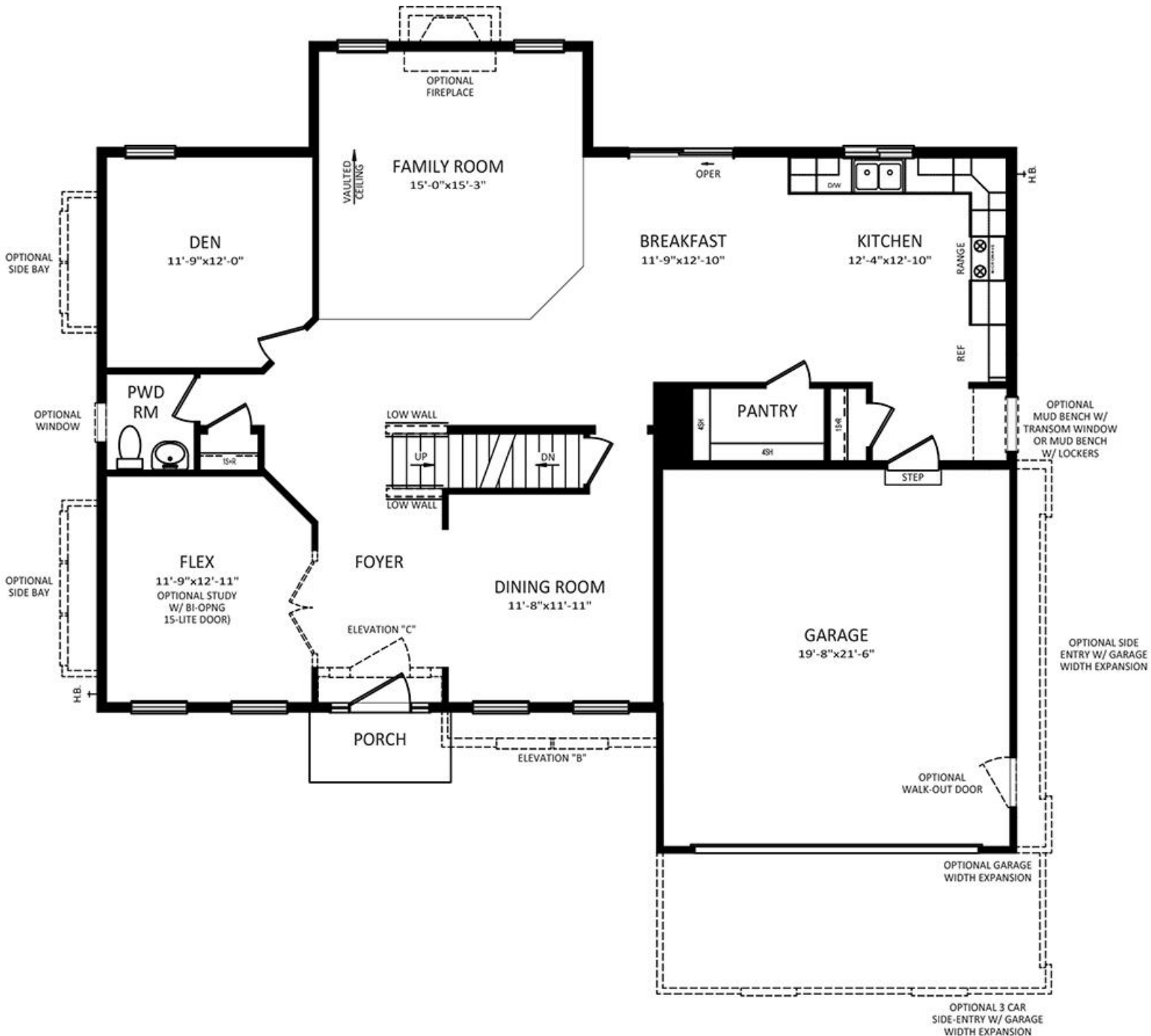
QUESTIONS? helloosc@berkshomes.com



In continuous effort by Berks Homes to improve the quality of your home, we reserve the right to change features, prices, plans and specifications without notice. Floorplans and elevation renderings are artists' conceptions only. Significant changes may be made during or after the construction of the model homes. Berks Homes reserves the right to modify, relocate or eliminate any or all of the features, specifications, plan utilities, design or shape thereof, all without notice or obligations to any purchaser. Price range reflects base price only. Location premiums will be charged for certain locations and are not included in the base price of the home. Additional association fees may apply. Other fees may also apply. Amenities are proposed and planned or may be under construction. All square footages are approximate square footages of the total livable space. Water heater location deemed per city municipality code. Please see your onsite sales associate for additional information and more details. © 2022 Berks Homes. Current information as 1st December 2022

The Copper Beech Floorplan

Morgan's Crossing Singles



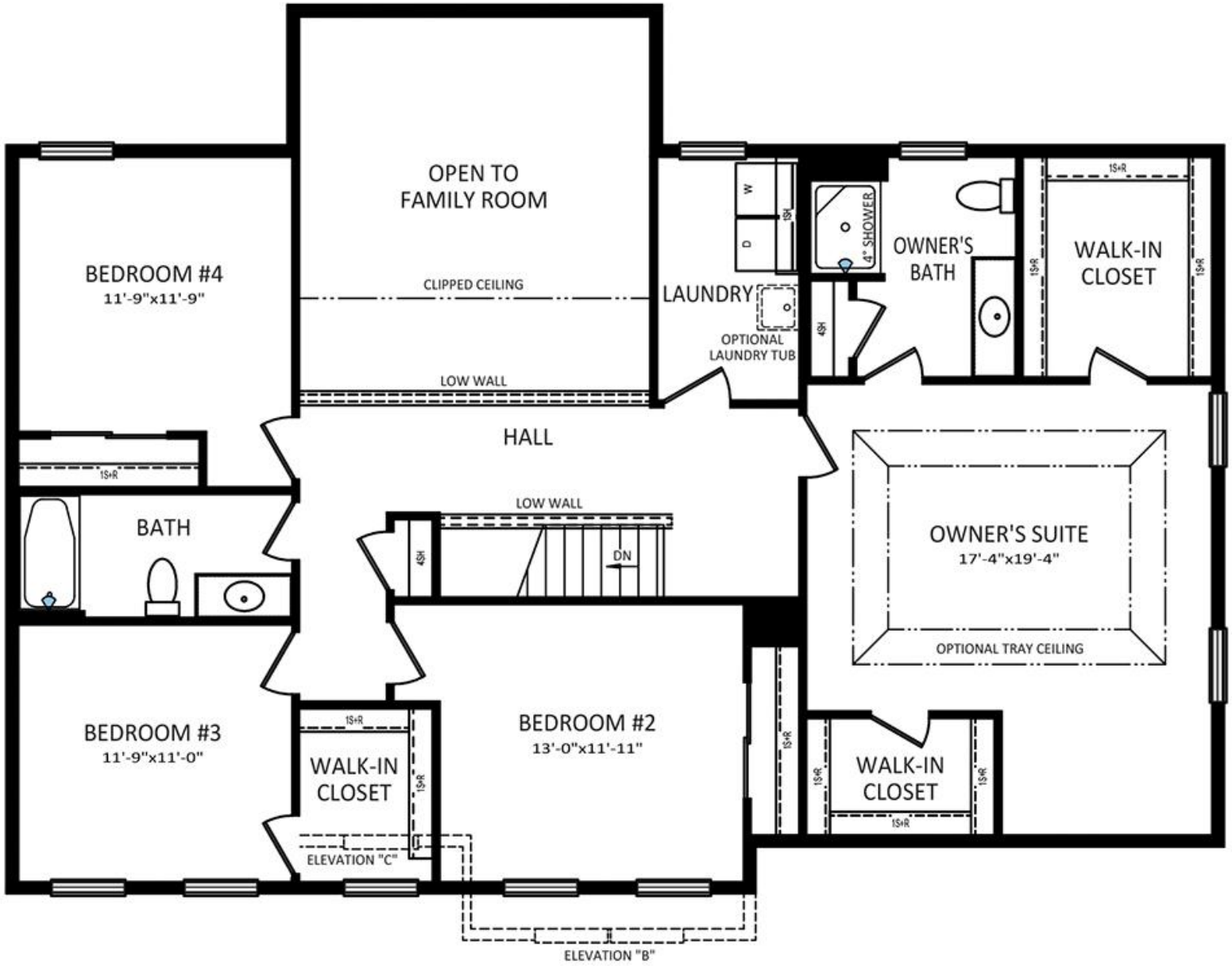
First Level



In continuous effort by Berks Homes to improve the quality of your home, we reserve the right to change features, prices, plans and specifications without notice. Floorplans and elevation renderings are artists' conceptions only. Significant changes may be made during or after the construction of the model homes. Berks Homes reserves the right to modify, relocate or eliminate any or all of the features, specifications, plan utilities, design or shape thereof, all without notice or obligations to any purchaser. Price range reflects base price only. Location premiums will be charged for certain locations and are not included in the base price of the home. Additional association fees may apply. Other fees may also apply. Amenities are proposed and planned or may be under construction. All square footages are approximate square footages of the total livable space. Water heater location deemed per city municipality code. Please see your onsite sales associate for additional information and more details. © 2022 Berks Homes. Current information as 1st December 2022

The Copper Beech Floorplan

Morgan's Crossing Singles



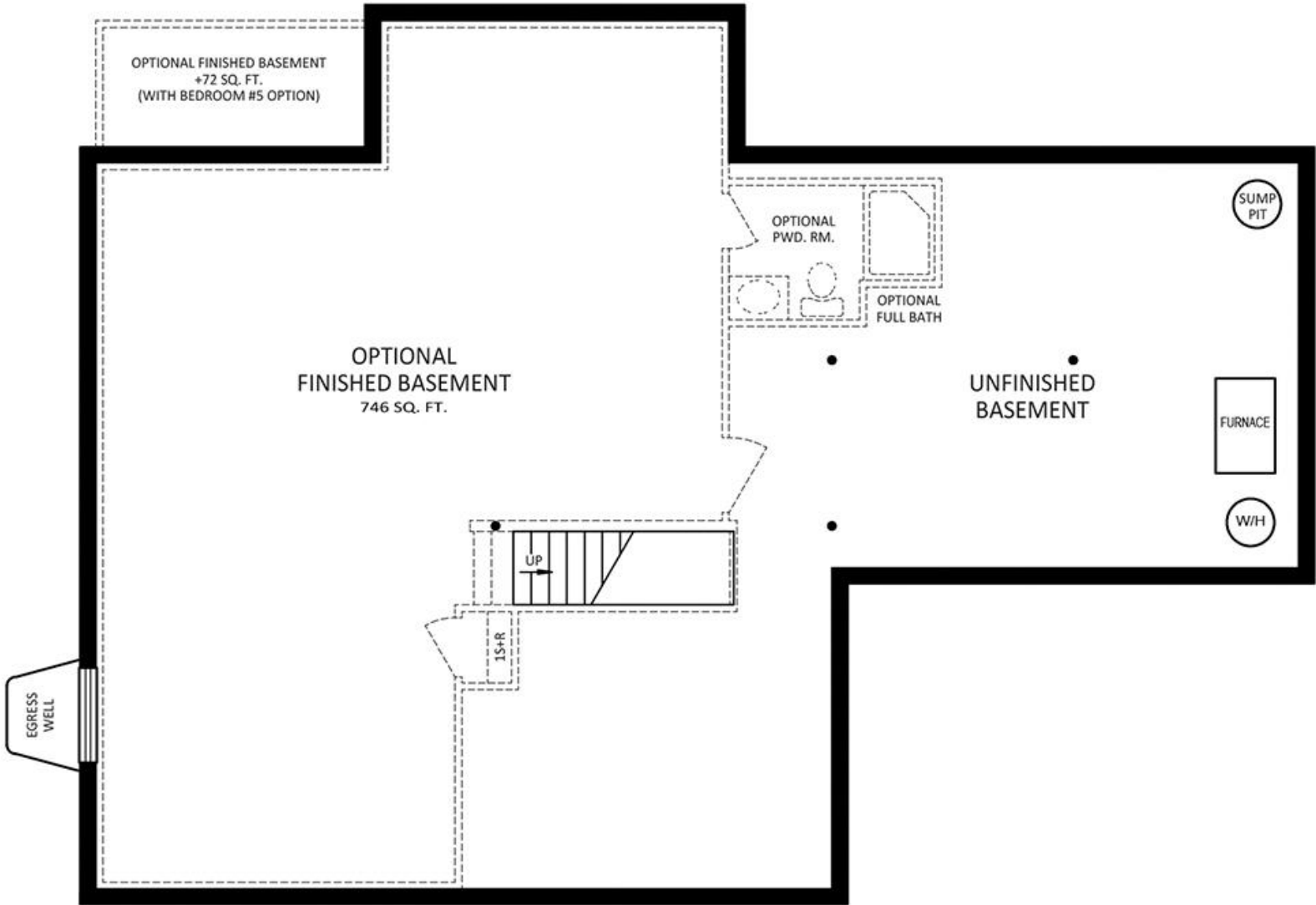
Second Level



In continuous effort by Berks Homes to improve the quality of your home, we reserve the right to change features, prices, plans and specifications without notice. Floorplans and elevation renderings are artists' conceptions only. Significant changes may be made during or after the construction of the model homes. Berks Homes reserves the right to modify, relocate or eliminate any or all of the features, specifications, plan utilities, design or shape thereof, all without notice or obligations to any purchaser. Price range reflects base price only. Location premiums will be charged for certain locations and are not included in the base price of the home. Additional association fees may apply. Other fees may also apply. Amenities are proposed and planned or may be under construction. All square footages are approximate square footages of the total livable space. Water heater location deemed per city municipality code. Please see your onsite sales associate for additional information and more details. © 2022 Berks Homes. Current information as 1st December 2022

The Copper Beech Floorplan

Morgan's Crossing Singles



Lower Level



In continuous effort by Berks Homes to improve the quality of your home, we reserve the right to change features, prices, plans and specifications without notice. Floorplans and elevation renderings are artists' conceptions only. Significant changes may be made during or after the construction of the model homes. Berks Homes reserves the right to modify, relocate or eliminate any or all of the features, specifications, plan utilities, design or shape thereof, all without notice or obligations to any purchaser. Price range reflects base price only. Location premiums will be charged for certain locations and are not included in the base price of the home. Additional association fees may apply. Other fees may also apply. Amenities are proposed and planned or may be under construction. All square footages are approximate square footages of the total livable space. Water heater location deemed per city municipality code. Please see your onsite sales associate for additional information and more details. © 2022 Berks Homes. Current information as 1st December 2022

The Copper Beech Floorplan

Morgan's Crossing Singles



OPTIONAL GOURMET KITCHEN



OPTIONAL GOURMET KITCHEN WITH MORNING ROOM



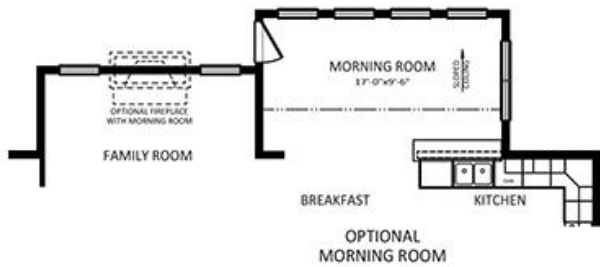
OPTIONAL ALTERNATE KITCHEN



OPTIONAL ALTERNATE KITCHEN WITH MORNING ROOM



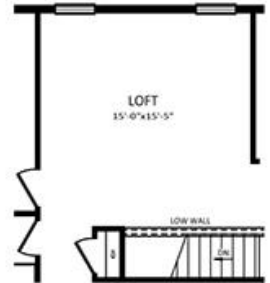
OPTIONAL FIRST FLOOR BEDROOM AND BATH ADDITION



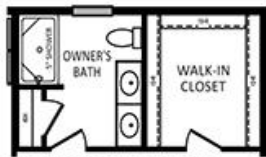
OPTIONAL MORNING ROOM



OPTIONAL GUEST SUITE



OPTIONAL LOFT ADDITION



OPTIONAL OWNER'S BATH DOUBLE BOWL VANITY PACKAGE



OPTIONAL OWNER'S BATH LUXURY BATH PACKAGE



OPTIONAL OWNER'S BATH SERENITY BATH PACKAGE

Options



In continuous effort by Berks Homes to improve the quality of your home, we reserve the right to change features, prices, plans and specifications without notice. Floorplans and elevation renderings are artists' conceptions only. Significant changes may be made during or after the construction of the model homes. Berks Homes reserves the right to modify, relocate or eliminate any or all of the features, specifications, plan utilities, design or shape thereof, all without notice or obligations to any purchaser. Price range reflects base price only. Location premiums will be charged for certain locations and are not included in the base price of the home. Additional association fees may apply. Other fees may also apply. Amenities are proposed and planned or may be under construction. All square footages are approximate square footages of the total livable space. Water heater location deemed per city municipality code. Please see your onsite sales associate for additional information and more details. © 2022 Berks Homes. Current information as 1st December 2022