

# The Persimmon Floorplan

Morgan's Crossing Townhomes



1,949  
Sq.Ft.



3  
Bedrooms



2.5  
Bathrooms



3  
Stories



2  
Car Garage

"This Beautiful Persimmon Townhome offers an exceptional amount of space and functionality to suite your family's lifestyle. With over 1,900 square feet of finished space on 3 levels, this home offers exceptional space for hosting friends and family. This Gorgeous Kitchen opens up to the dining and living space that's perfectly suited for large gatherings or a quiet evening with family. Elegant Granite Countertops, Stainless Steel Appliances, Tile Backsplash, and an Island with overhang seating will illuminate the Kitchen leaving your guests never wanting to leave. Feeling like taking the party outside? The Composite Deck with a Privacy Fence is nicely suited for you grill masters or enjoying a lovely evening under the stars. As we take a walk upstairs, the Master Suite that's nicely suited at the back of the home comes with a with spacious Master Bathroom, double vanity sinks, and a Large Walk In Closet. The two Spare Bedrooms are generous in size with a Roomy Hall Bathroom. Welcome Home!"

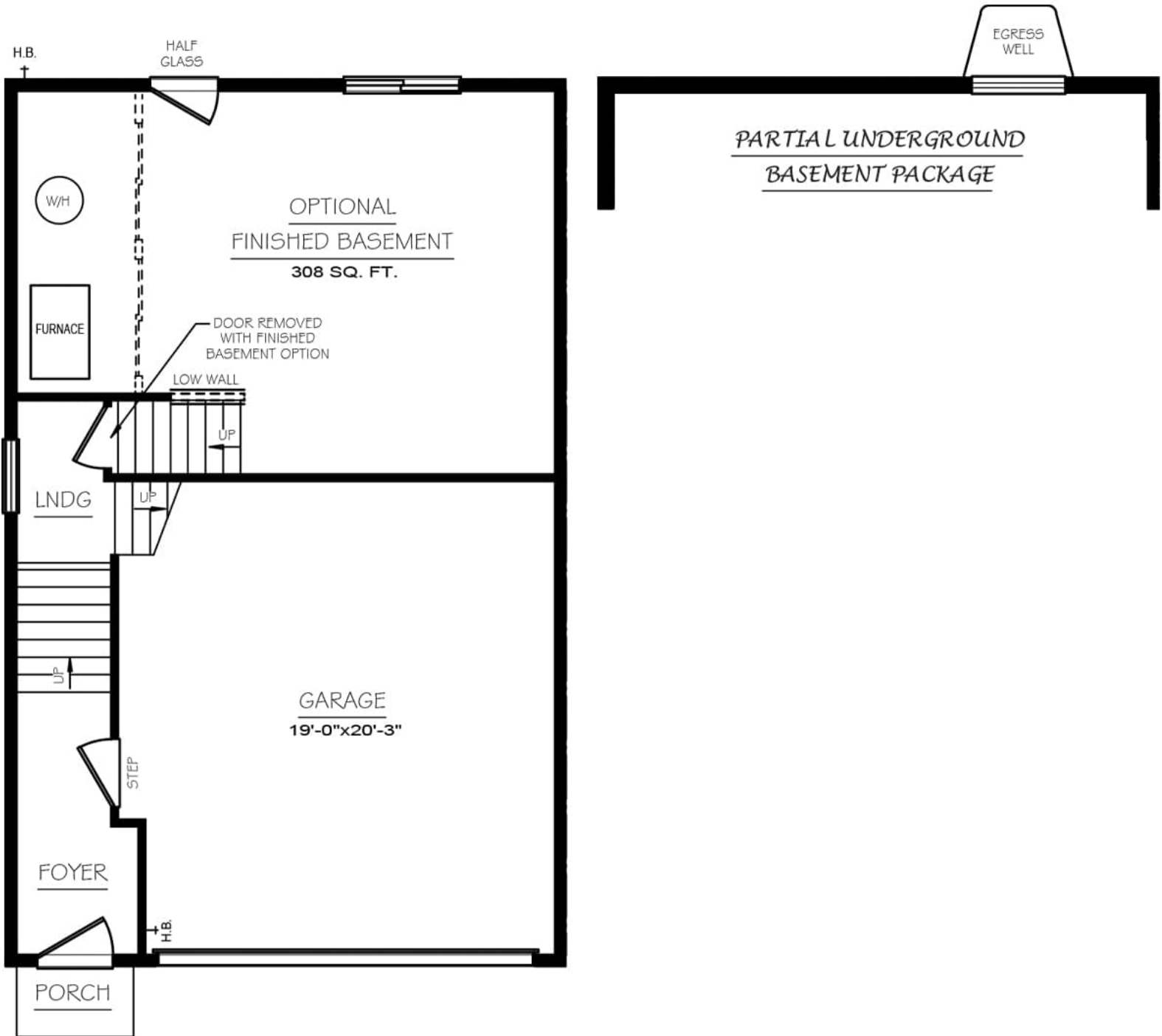
**QUESTIONS?** [helloosc@berkshomes.com](mailto:helloosc@berkshomes.com)



In continuous effort by Berks Homes to improve the quality of your home, we reserve the right to change features, prices, plans and specifications without notice. Floorplans and elevation renderings are artists' conceptions only. Significant changes may be made during or after the construction of the model homes. Berks Homes reserves the right to modify, relocate or eliminate any or all of the features, specifications, plan utilities, design or shape thereof, all without notice or obligations to any purchaser. Price range reflects base price only. Location premiums will be charged for certain locations and are not included in the base price of the home. Additional association fees may apply. Other fees may also apply. Amenities are proposed and planned or may be under construction. All square footages are approximate square footages of the total livable space. Water heater location deemed per city municipality code. Please see your onsite sales associate for additional information and more details. © 2022 Berks Homes. Current information as 1st December 2022

# The Persimmon Floorplan

Morgan's Crossing Townhomes



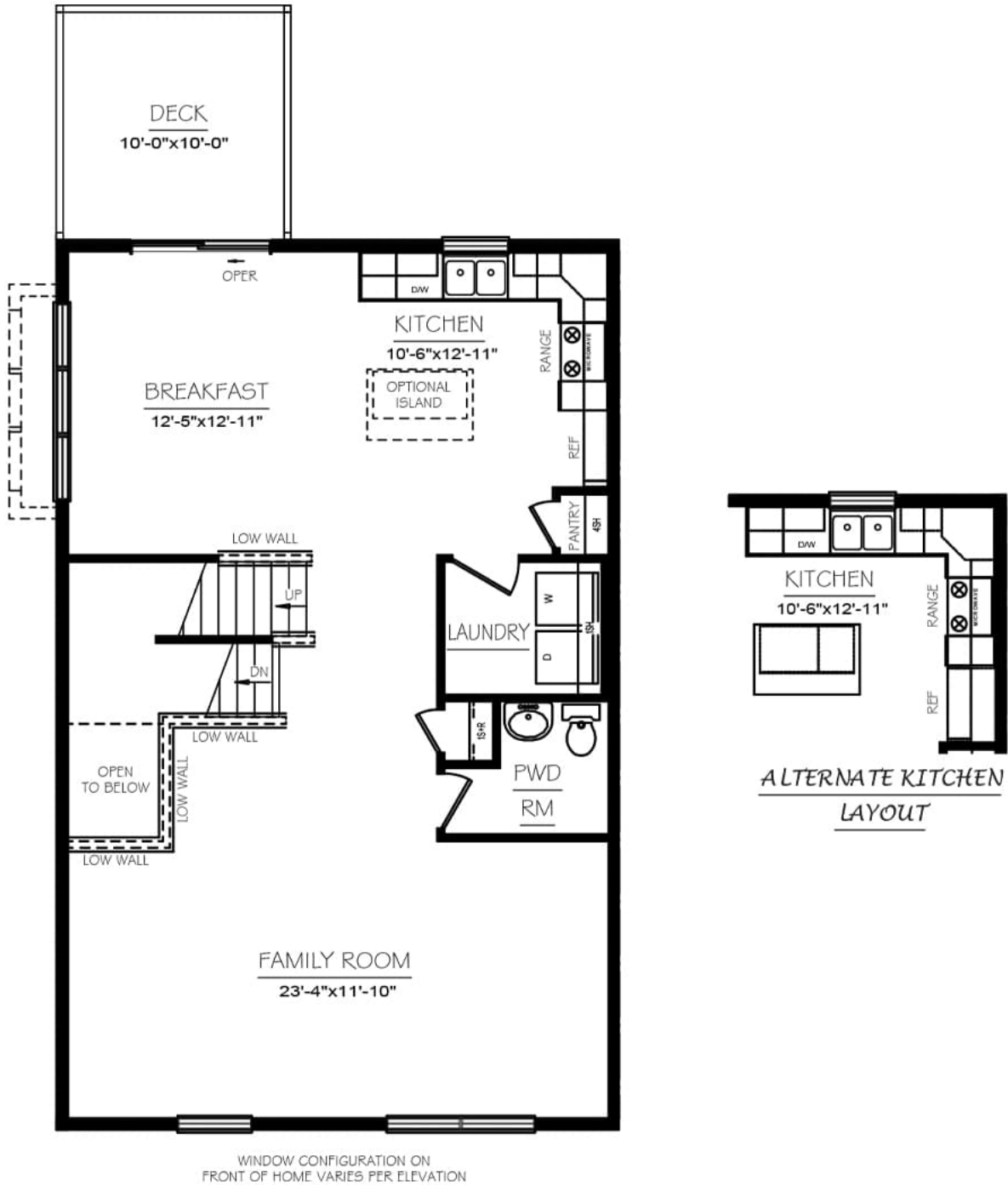
First Level



In continuous effort by Berks Homes to improve the quality of your home, we reserve the right to change features, prices, plans and specifications without notice. Floorplans and elevation renderings are artists' conceptions only. Significant changes may be made during or after the construction of the model homes. Berks Homes reserves the right to modify, relocate or eliminate any or all of the features, specifications, plan utilities, design or shape thereof, all without notice or obligations to any purchaser. Price range reflects base price only. Location premiums will be charged for certain locations and are not included in the base price of the home. Additional association fees may apply. Other fees may also apply. Amenities are proposed and planned or may be under construction. All square footages are approximate square footages of the total livable space. Water heater location deemed per city municipality code. Please see your onsite sales associate for additional information and more details. © 2022 Berks Homes. Current information as 1st December 2022

# The Persimmon Floorplan

Morgan's Crossing Townhomes



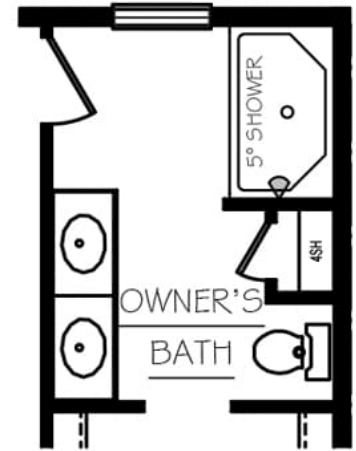
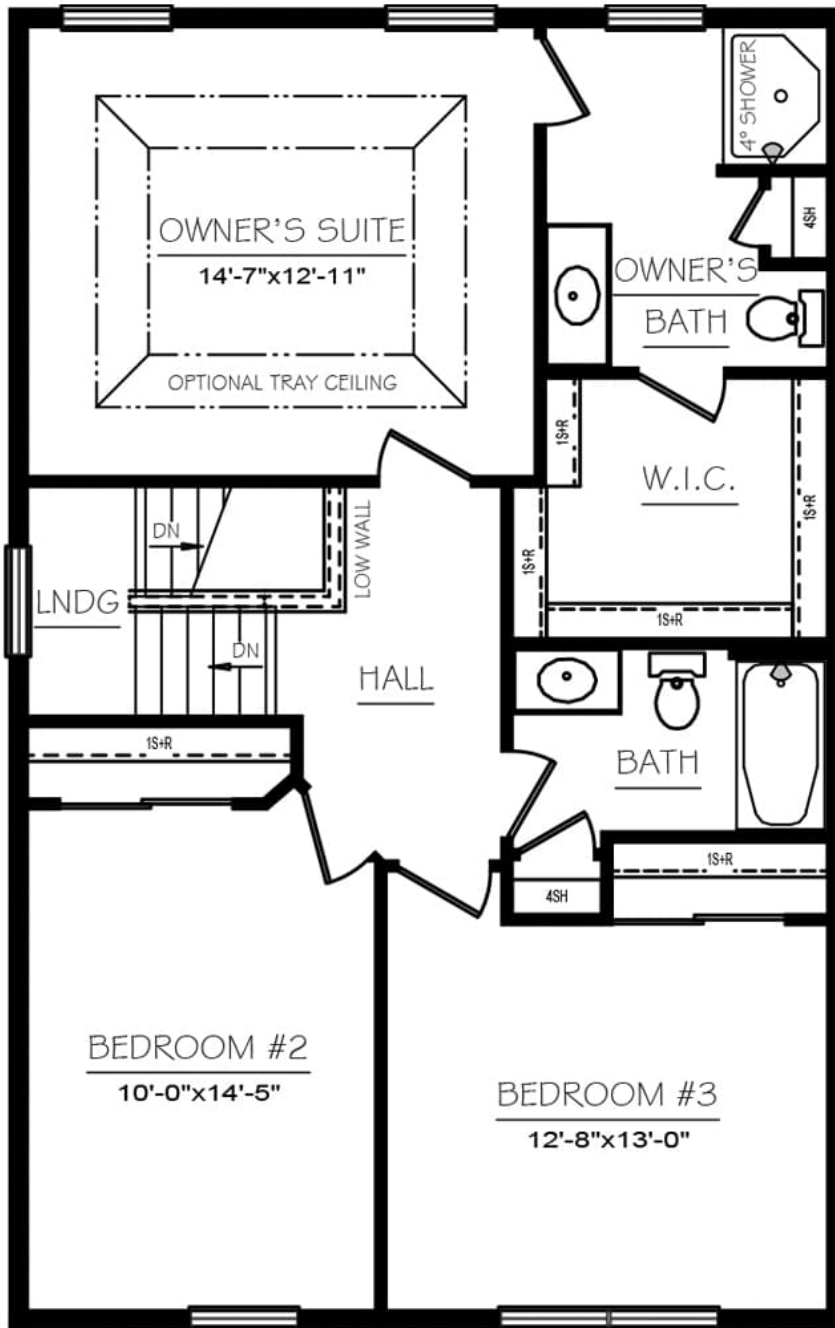
## Second Level



In continuous effort by Berks Homes to improve the quality of your home, we reserve the right to change features, prices, plans and specifications without notice. Floorplans and elevation renderings are artists' conceptions only. Significant changes may be made during or after the construction of the model homes. Berks Homes reserves the right to modify, relocate or eliminate any or all of the features, specifications, plan utilities, design or shape thereof, all without notice or obligations to any purchaser. Price range reflects base price only. Location premiums will be charged for certain locations and are not included in the base price of the home. Additional association fees may apply. Other fees may also apply. Amenities are proposed and planned or may be under construction. All square footages are approximate square footages of the total livable space. Water heater location deemed per city municipality code. Please see your onsite sales associate for additional information and more details. © 2022 Berks Homes. Current information as 1st December 2022

# The Persimmon Floorplan

Morgan's Crossing Townhomes



OWNER'S BATH  
DOUBLE BOWL  
VANITY PACKAGE

WINDOW CONFIGURATION ON  
FRONT OF HOME VARIES PER ELEVATION

## Third Level



In continuous effort by Berks Homes to improve the quality of your home, we reserve the right to change features, prices, plans and specifications without notice. Floorplans and elevation renderings are artists' conceptions only. Significant changes may be made during or after the construction of the model homes. Berks Homes reserves the right to modify, relocate or eliminate any or all of the features, specifications, plan utilities, design or shape thereof, all without notice or obligations to any purchaser. Price range reflects base price only. Location premiums will be charged for certain locations and are not included in the base price of the home. Additional association fees may apply. Other fees may also apply. Amenities are proposed and planned or may be under construction. All square footages are approximate square footages of the total livable space. Water heater location deemed per city municipality code. Please see your onsite sales associate for additional information and more details. © 2022 Berks Homes. Current information as 1st December 2022