

# The **Adeline** Floorplan

Oak Avenue Singles



**From \$299,990**



1,649  
Sq.Ft.



3  
Bedrooms



2.0  
Bathrooms



1  
Stories



2  
Car Garage

Adeline is the perfect name for this sweet and roomy home all on one level. Everything you need is included in this 1,649 SF, 1-story home, including a kitchen, with pantry and island, breakfast room and family room. Additionally, there are 3 bedrooms, with an owner's suite that boasts a full bath and walk in closet. Many upgrades are available with this floor plan, such as family room expansion, owner's bath double bowl vanity and alternate kitchen and more!

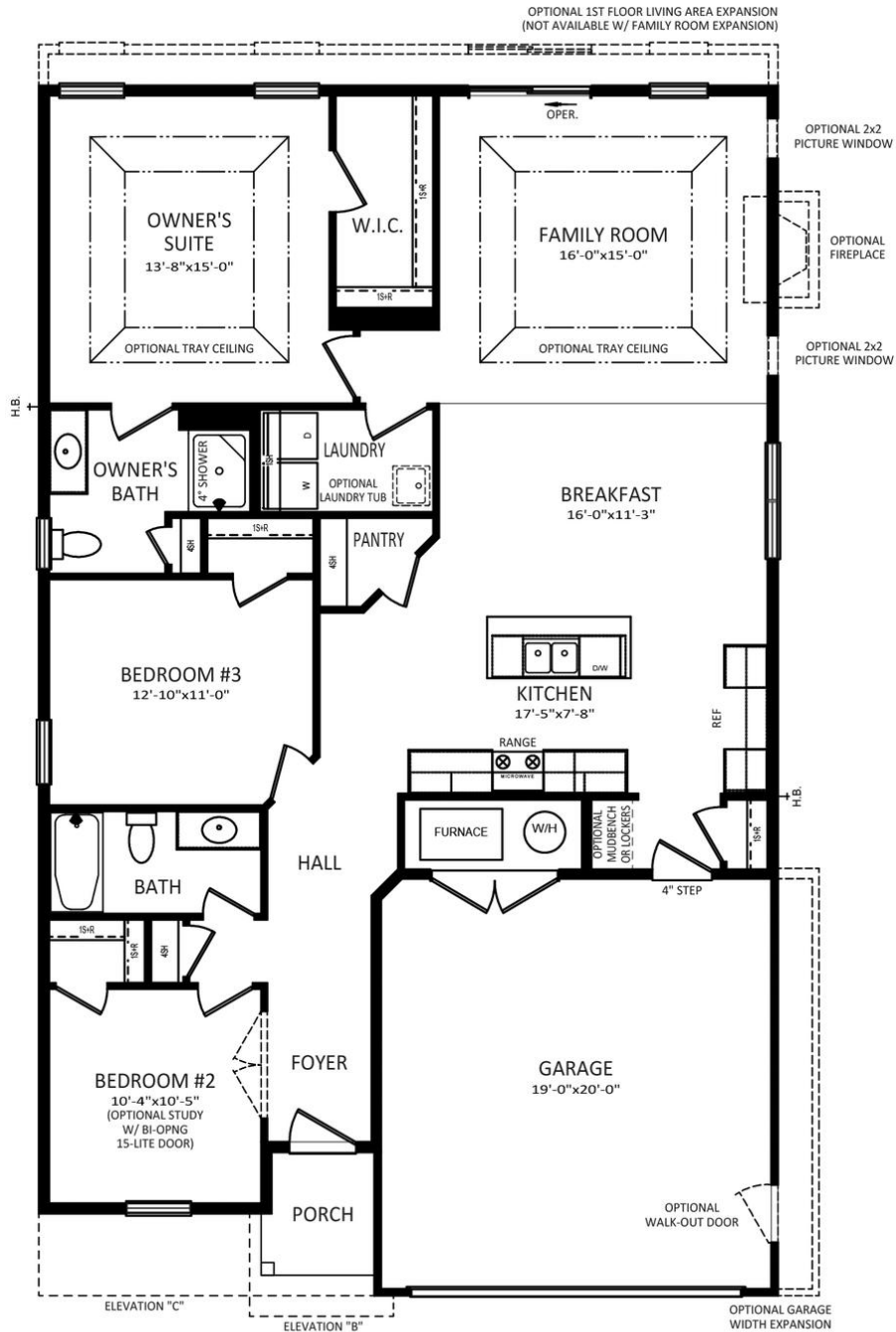
**QUESTIONS?** [helloosc@berkshomes.com](mailto:helloosc@berkshomes.com)



In continuous effort by Berks Homes to improve the quality of your home, we reserve the right to change features, prices, plans and specifications without notice. Floorplans and elevation renderings are artists' conceptions only. Significant changes may be made during or after the construction of the model homes. Berks Homes reserves the right to modify, relocate or eliminate any or all of the features, specifications, plan utilities, design or shape thereof, all without notice or obligations to any purchaser. Price range reflects base price only. Location premiums will be charged for certain locations and are not included in the base price of the home. Additional association fees may apply. Other fees may also apply. Amenities are proposed and planned or may be under construction. All square footages are approximate square footages of the total livable space. Water heater location deemed per city municipality code. Please see your onsite sales associate for additional information and more details. © 2022 Berks Homes. Current information as 1st December 2022

# The Adeline Floorplan

## Oak Avenue Singles



### FIRST FLOOR

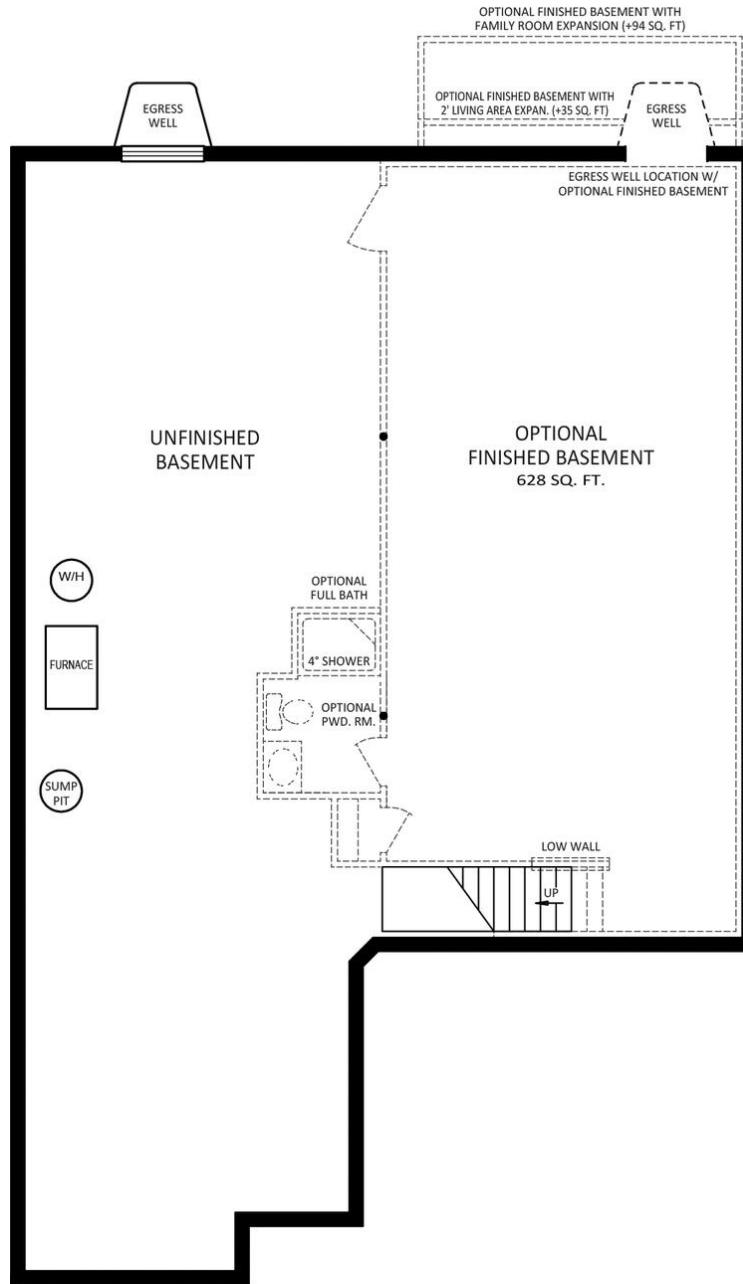
### First Level



In continuous effort by Berks Homes to improve the quality of your home, we reserve the right to change features, prices, plans and specifications without notice. Floorplans and elevation renderings are artists' conceptions only. Significant changes may be made during or after the construction of the model homes. Berks Homes reserves the right to modify, relocate or eliminate any or all of the features, specifications, plan utilities, design or shape thereof, all without notice or obligations to any purchaser. Price range reflects base price only. Location premiums will be charged for certain locations and are not included in the base price of the home. Additional association fees may apply. Other fees may also apply. Amenities are proposed and planned or may be under construction. All square footages are approximate square footages of the total livable space. Water heater location deemed per city municipality code. Please see your onsite sales associate for additional information and more details. © 2022 Berks Homes. Current information as 1st December 2022

# The Adeline Floorplan

Oak Avenue Singles



## FOUNDATION

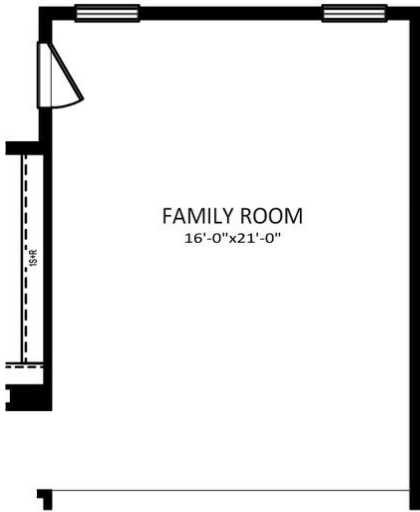
### Lower Level



In continuous effort by Berks Homes to improve the quality of your home, we reserve the right to change features, prices, plans and specifications without notice. Floorplans and elevation renderings are artists' conceptions only. Significant changes may be made during or after the construction of the model homes. Berks Homes reserves the right to modify, relocate or eliminate any or all of the features, specifications, plan utilities, design or shape thereof, all without notice or obligations to any purchaser. Price range reflects base price only. Location premiums will be charged for certain locations and are not included in the base price of the home. Additional association fees may apply. Other fees may also apply. Amenities are proposed and planned or may be under construction. All square footages are approximate square footages of the total livable space. Water heater location deemed per city municipality code. Please see your onsite sales associate for additional information and more details. © 2022 Berks Homes. Current information as 1st December 2022

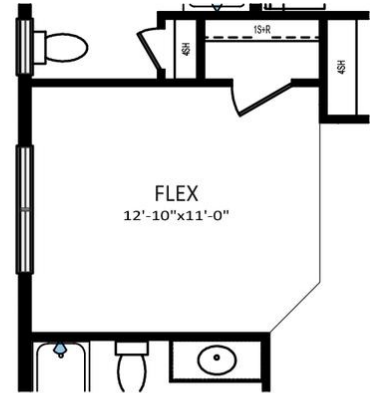
# The **Adeline** Floorplan

Oak Avenue Singles

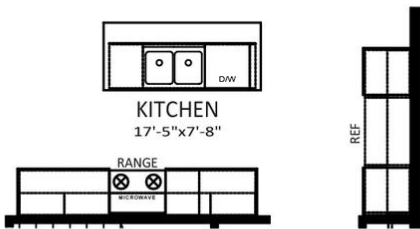


**OPTIONAL FAMILY ROOM EXPANSION**

(NOT AVAILABLE WITH 1ST FLOOR LIVING AREA EXPANSION)



**OPTIONAL FLEX I/O BEDROOM**



**OPTIONAL ALTERNATE KITCHEN**



**OWNER'S BATH DOUBLE BOWL VANITY PACKAGE**

## First Level Options



In continuous effort by Berks Homes to improve the quality of your home, we reserve the right to change features, prices, plans and specifications without notice. Floorplans and elevation renderings are artists' conceptions only. Significant changes may be made during or after the construction of the model homes. Berks Homes reserves the right to modify, relocate or eliminate any or all of the features, specifications, plan utilities, design or shape thereof, all without notice or obligations to any purchaser. Price range reflects base price only. Location premiums will be charged for certain locations and are not included in the base price of the home. Additional association fees may apply. Other fees may also apply. Amenities are proposed and planned or may be under construction. All square footages are approximate square footages of the total livable space. Water heater location deemed per city municipality code. Please see your onsite sales associate for additional information and more details. © 2022 Berks Homes. Current information as 1st December 2022