

# The **Abbey** Floorplan

Pathfinder Meadows Singles



**From \$376,990**



1,662  
Sq.Ft.



3  
Bedrooms



2.0  
Bathrooms



1  
Stories



2  
Car Garage

The beautiful Abbey floorplan gives you everything you need, all on one floor. This one-story home offers more than 1,600 sq ft of goodness. The open layout makes everything feel accessible: the eat-in kitchen, large family room, all three bedrooms and both bathrooms. The owner's suite has an impressive walk-in closet and is conveniently located right next to the built-in laundry room. You have options to upgrade your bathroom, add a light-drenched sunroom off the kitchen, include a fireplace in the living room, and finish the basement. The Abbey is the perfect home to fulfill all your wants and needs.

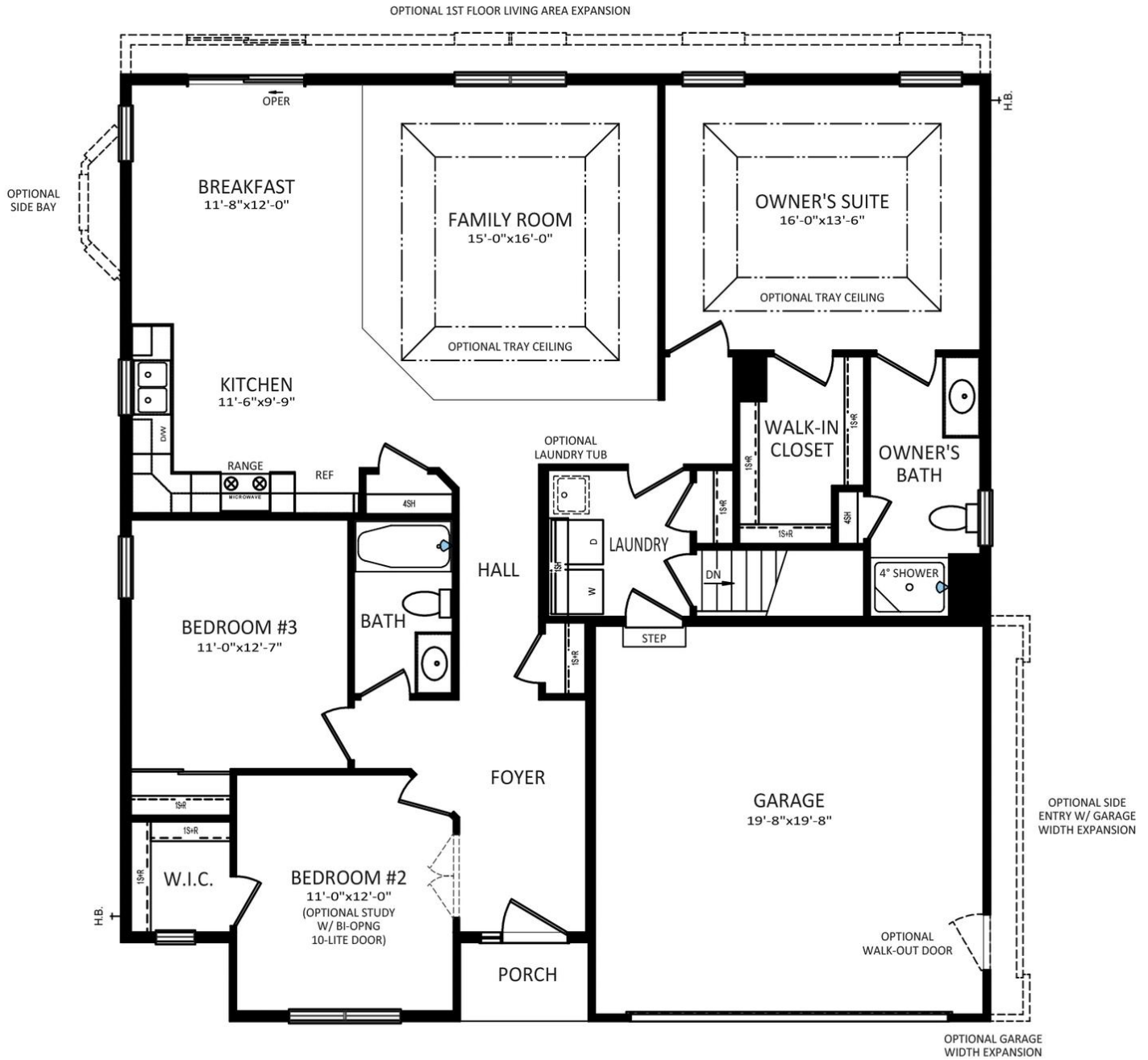
**QUESTIONS?** [helloosc@berkshomes.com](mailto:helloosc@berkshomes.com)



In continuous effort by Berks Homes to improve the quality of your home, we reserve the right to change features, prices, plans and specifications without notice. Floorplans and elevation renderings are artists' conceptions only. Significant changes may be made during or after the construction of the model homes. Berks Homes reserves the right to modify, relocate or eliminate any or all of the features, specifications, plan utilities, design or shape thereof, all without notice or obligations to any purchaser. Price range reflects base price only. Location premiums will be charged for certain locations and are not included in the base price of the home. Additional association fees may apply. Other fees may also apply. Amenities are proposed and planned or may be under construction. All square footages are approximate square footages of the total livable space. Water heater location deemed per city municipality code. Please see your onsite sales associate for additional information and more details. © 2022 Berks Homes. Current information as 1st December 2022

# The **Abbey** Floorplan

## Pathfinder Meadows Singles



### FIRST FLOOR

### First Level

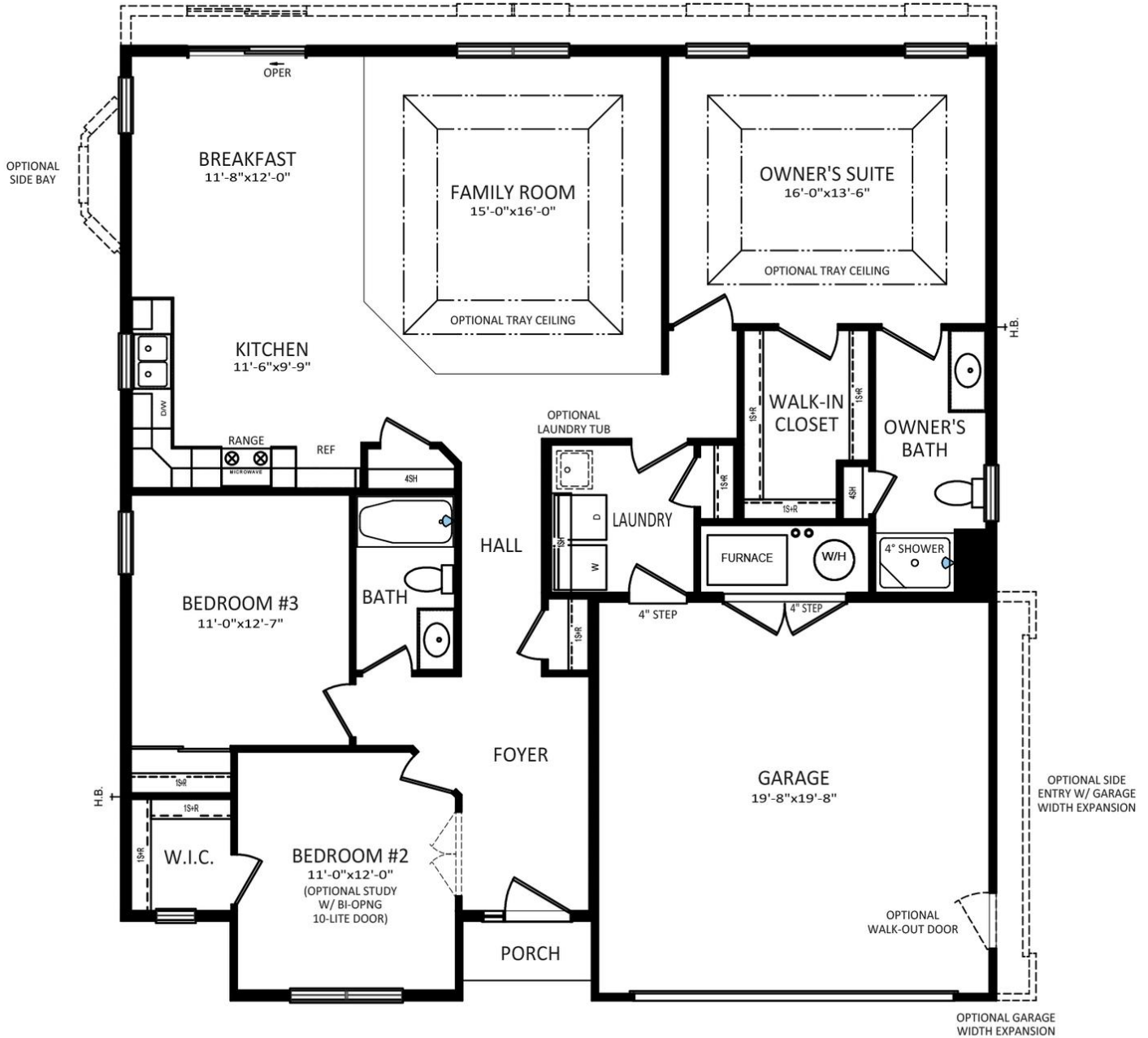


In continuous effort by Berks Homes to improve the quality of your home, we reserve the right to change features, prices, plans and specifications without notice. Floorplans and elevation renderings are artists' conceptions only. Significant changes may be made during or after the construction of the model homes. Berks Homes reserves the right to modify, relocate or eliminate any or all of the features, specifications, plan utilities, design or shape thereof, all without notice or obligations to any purchaser. Price range reflects base price only. Location premiums will be charged for certain locations and are not included in the base price of the home. Additional association fees may apply. Other fees may also apply. Amenities are proposed and planned or may be under construction. All square footages are approximate square footages of the total livable space. Water heater location deemed per city municipality code. Please see your onsite sales associate for additional information and more details. © 2022 Berks Homes. Current information as 1st December 2022

# The **Abbey** Floorplan

## Pathfinder Meadows Singles

OPTIONAL 1ST FLOOR LIVING AREA EXPANSION



### FIRST FLOOR

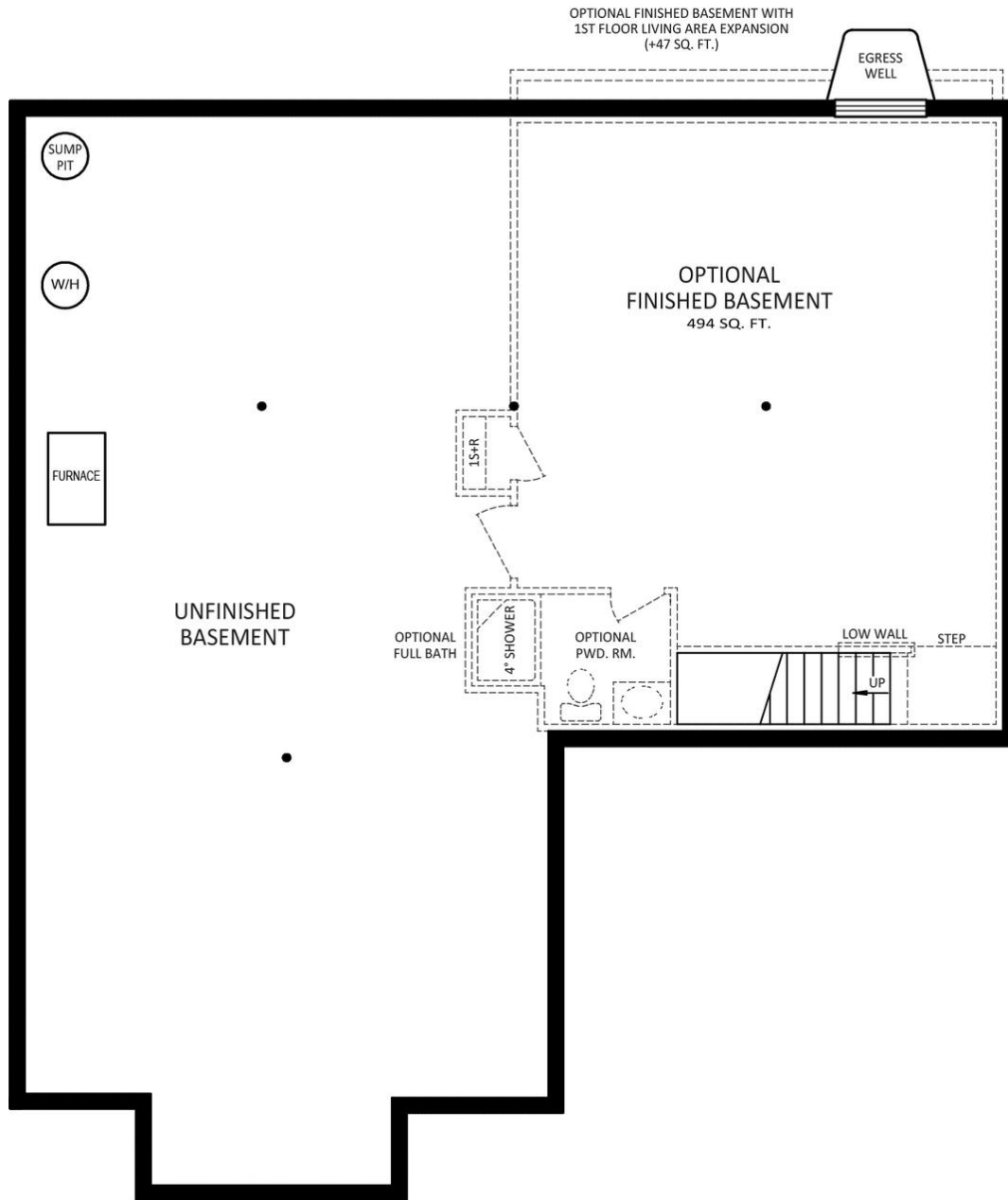
### First Level - Slab



In continuous effort by Berks Homes to improve the quality of your home, we reserve the right to change features, prices, plans and specifications without notice. Floorplans and elevation renderings are artists' conceptions only. Significant changes may be made during or after the construction of the model homes. Berks Homes reserves the right to modify, relocate or eliminate any or all of the features, specifications, plan utilities, design or shape thereof, all without notice or obligations to any purchaser. Price range reflects base price only. Location premiums will be charged for certain locations and are not included in the base price of the home. Additional association fees may apply. Other fees may also apply. Amenities are proposed and planned or may be under construction. All square footages are approximate square footages of the total livable space. Water heater location deemed per city municipality code. Please see your onsite sales associate for additional information and more details. © 2022 Berks Homes. Current information as 1st December 2022

# The **Abbey** Floorplan

## Pathfinder Meadows Singles



### FOUNDATION

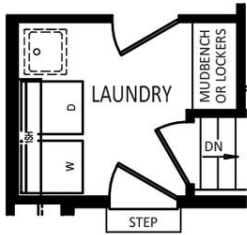
#### Lower Level



In continuous effort by Berks Homes to improve the quality of your home, we reserve the right to change features, prices, plans and specifications without notice. Floorplans and elevation renderings are artists' conceptions only. Significant changes may be made during or after the construction of the model homes. Berks Homes reserves the right to modify, relocate or eliminate any or all of the features, specifications, plan utilities, design or shape thereof, all without notice or obligations to any purchaser. Price range reflects base price only. Location premiums will be charged for certain locations and are not included in the base price of the home. Additional association fees may apply. Other fees may also apply. Amenities are proposed and planned or may be under construction. All square footages are approximate square footages of the total livable space. Water heater location deemed per city municipality code. Please see your onsite sales associate for additional information and more details. © 2022 Berks Homes. Current information as 1st December 2022

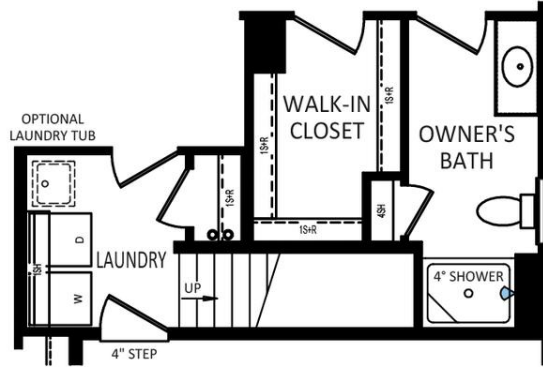
# The **Abbey** Floorplan

## Pathfinder Meadows Singles



**OPTIONAL MUDBENCH**

ONLY AVAILABLE W/ BASEMENT FOUNDATION



**OPTIONAL ATTIC STORAGE**

**FIRST FLOOR**

ONLY AVAILABLE W/ SLAB FOUNDATION

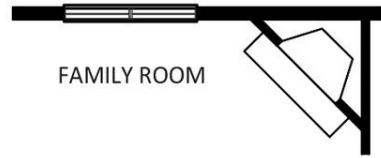


**OWNER'S BATH  
DOUBLE BOWL  
VANITY PACKAGE**



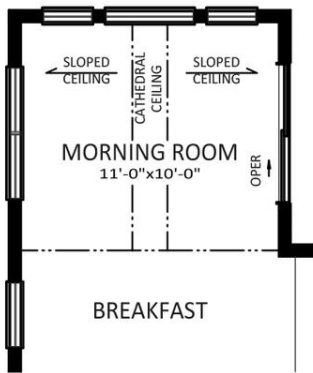
**FAMILY ROOM**

**OPTIONAL REAR WALL FIREPLACE**

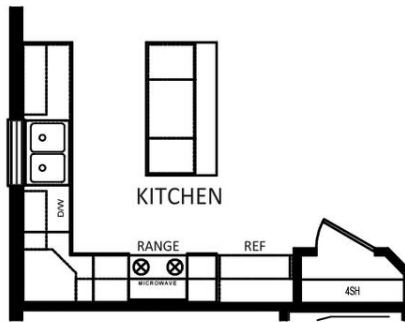


**FAMILY ROOM**

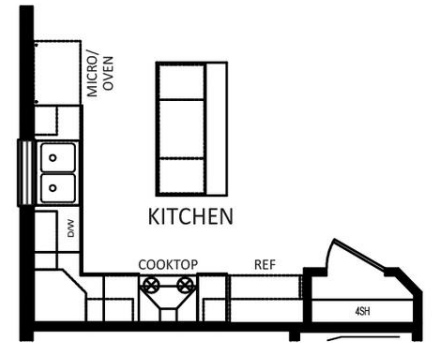
**OPTIONAL CORNER FIREPLACE**



**OPTIONAL MORNING ROOM**



**OPTIONAL ALTERNATE KITCHEN**



**OPTIONAL GOURMET KITCHEN**  
ONLY AVAILABLE W/ 9FT. FIRST FLOOR

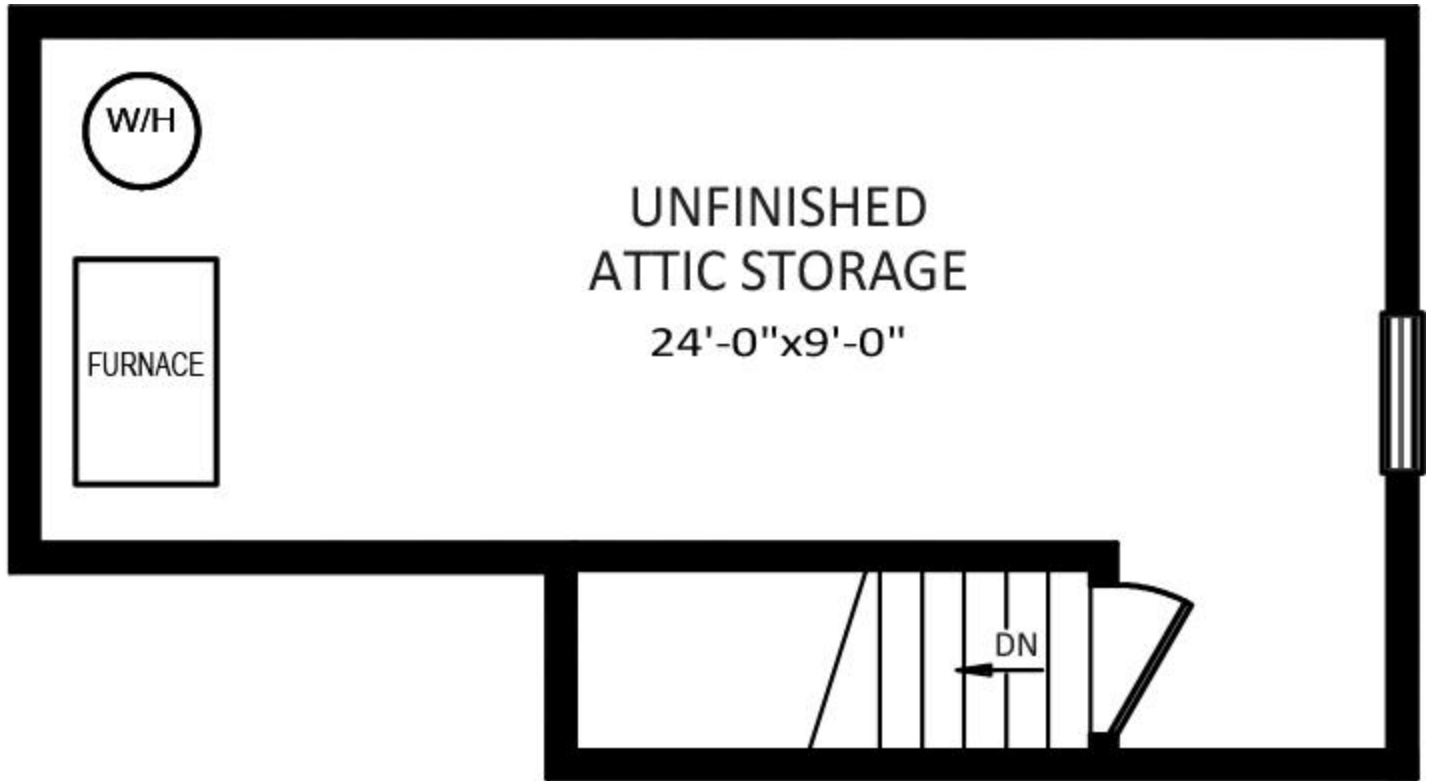
### First Level Options



In continuous effort by Berks Homes to improve the quality of your home, we reserve the right to change features, prices, plans and specifications without notice. Floorplans and elevation renderings are artists' conceptions only. Significant changes may be made during or after the construction of the model homes. Berks Homes reserves the right to modify, relocate or eliminate any or all of the features, specifications, plan utilities, design or shape thereof, all without notice or obligations to any purchaser. Price range reflects base price only. Location premiums will be charged for certain locations and are not included in the base price of the home. Additional association fees may apply. Other fees may also apply. Amenities are proposed and planned or may be under construction. All square footages are approximate square footages of the total livable space. Water heater location deemed per city municipality code. Please see your onsite sales associate for additional information and more details. © 2022 Berks Homes. Current information as 1st December 2022

# The **Abbey** Floorplan

Pathfinder Meadows Singles



## OPTIONAL ATTIC STORAGE SECOND FLOOR ONLY AVAILABLE W/ SLAB FOUNDATION

Attic Option



In continuous effort by Berks Homes to improve the quality of your home, we reserve the right to change features, prices, plans and specifications without notice. Floorplans and elevation renderings are artists' conceptions only. Significant changes may be made during or after the construction of the model homes. Berks Homes reserves the right to modify, relocate or eliminate any or all of the features, specifications, plan utilities, design or shape thereof, all without notice or obligations to any purchaser. Price range reflects base price only. Location premiums will be charged for certain locations and are not included in the base price of the home. Additional association fees may apply. Other fees may also apply. Amenities are proposed and planned or may be under construction. All square footages are approximate square footages of the total livable space. Water heater location deemed per city municipality code. Please see your onsite sales associate for additional information and more details. © 2022 Berks Homes. Current information as 1st December 2022