

The Juliet Floorplan

Pathfinder Meadows Singles



From \$399,990



1,900
Sq.Ft.



3
Bedrooms



2.0
Bathrooms



1
Stories



2
Car Garage

This model is named after one of our owner's granddaughters, Juliet. She is pure sweetness and radiates light, just like this home. From front to back, top to bottom, this 1900 sqft, 3 bed and 2 bath home is charming as can be. Two of the three elevations have a front porch option, which starts everything off on the right foot. Then you walk in and find yourself in the cozy foyer, next to the flex room, both leading you right to the gorgeous kitchen. The breakfast nook and family room, which are all open to each other in this thoughtful plan, round out the first floor. And wait until you see all the natural light! The owner's suite and the bedrooms are tucked on the other side of the house, positioned to be accessible but peaceful. There are lots of ways to customize this home—come see for yourself!

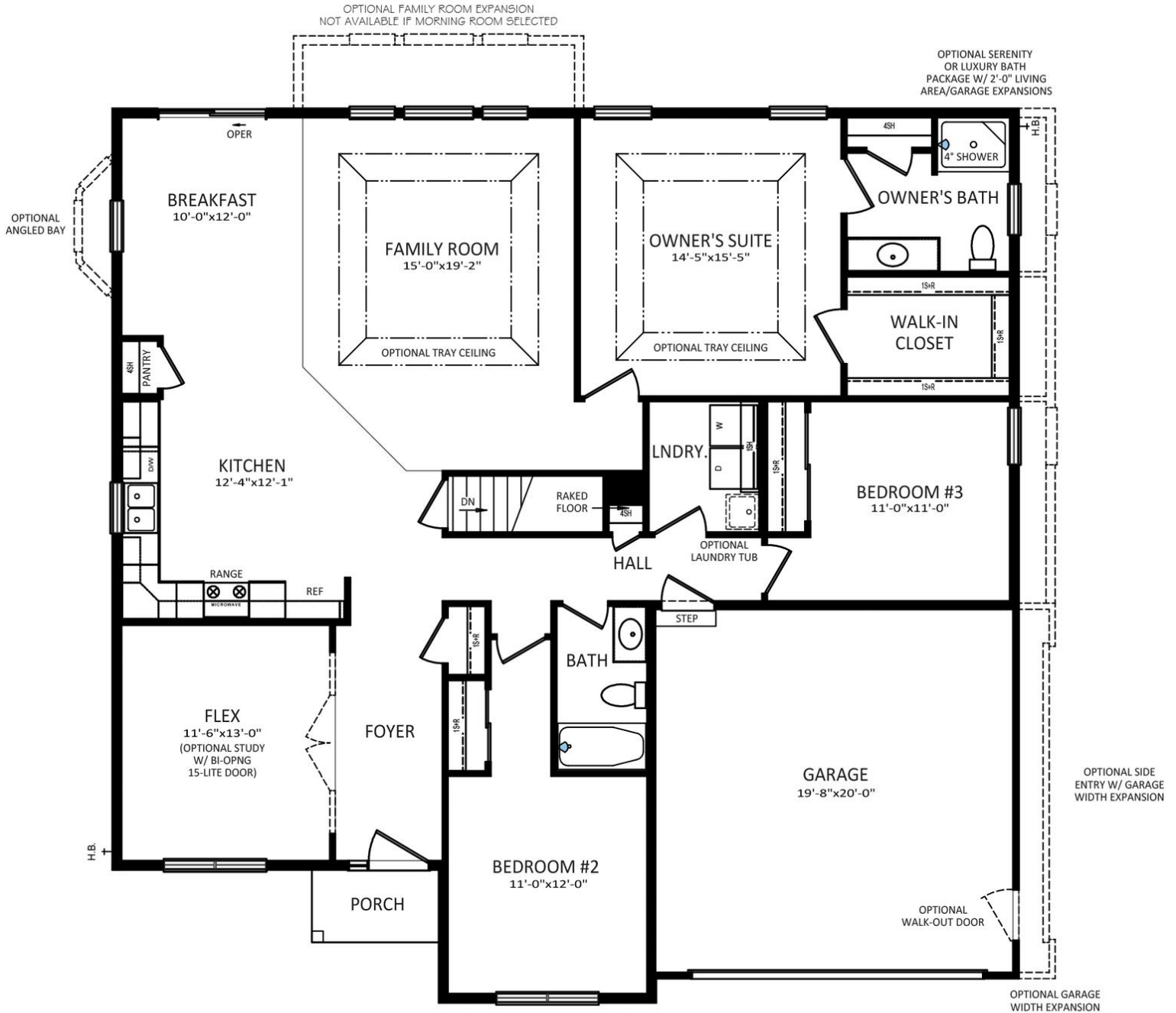
QUESTIONS? helloosc@berkshomes.com



In continuous effort by Berks Homes to improve the quality of your home, we reserve the right to change features, prices, plans and specifications without notice. Floorplans and elevation renderings are artists' conceptions only. Significant changes may be made during or after the construction of the model homes. Berks Homes reserves the right to modify, relocate or eliminate any or all of the features, specifications, plan utilities, design or shape thereof, all without notice or obligations to any purchaser. Price range reflects base price only. Location premiums will be charged for certain locations and are not included in the base price of the home. Additional association fees may apply. Other fees may also apply. Amenities are proposed and planned or may be under construction. All square footages are approximate square footages of the total livable space. Water heater location deemed per city municipality code. Please see your onsite sales associate for additional information and more details. © 2022 Berks Homes. Current information as 1st December 2022

The Juliet Floorplan

Pathfinder Meadows Singles



FIRST FLOOR

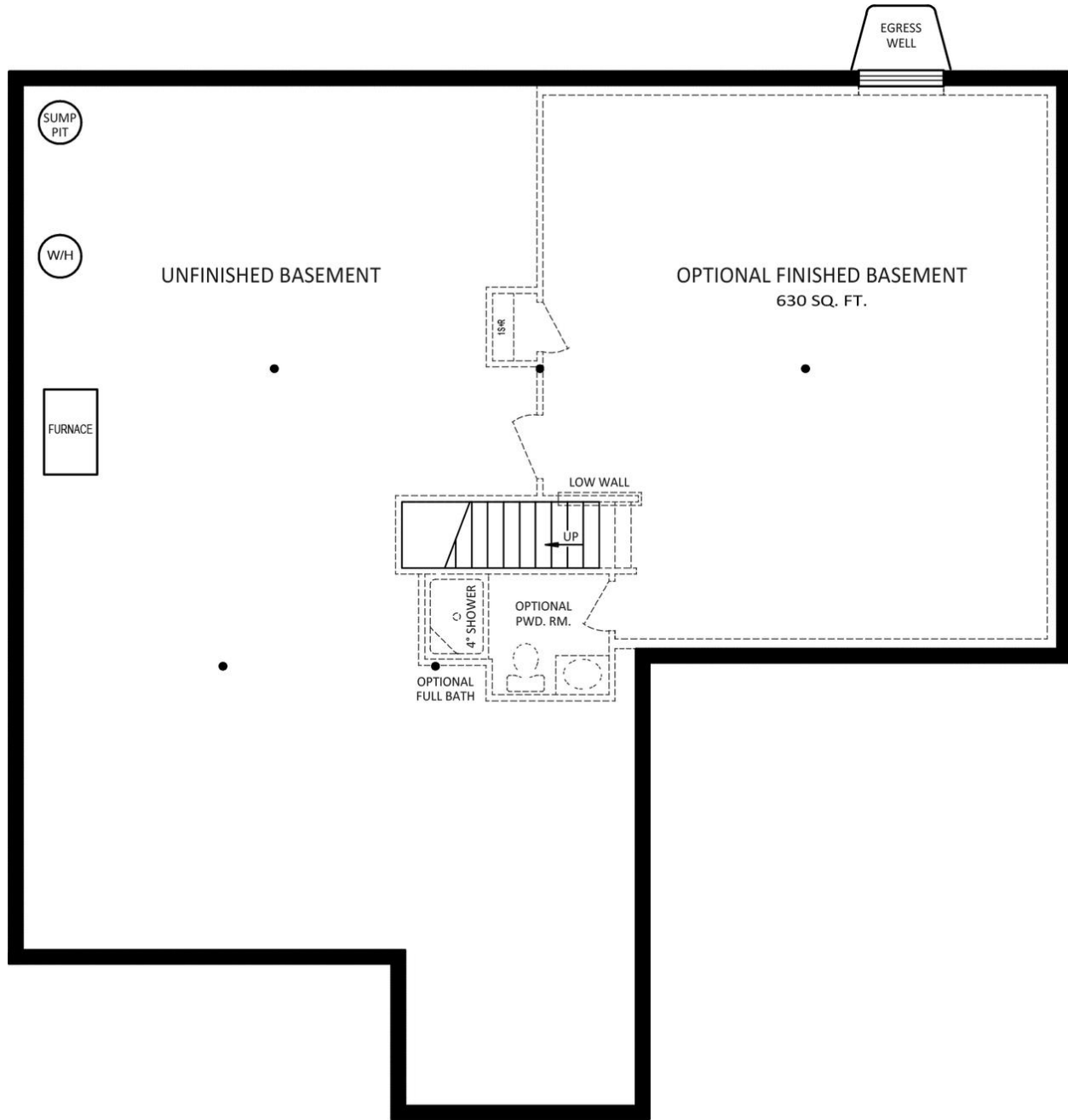
First Level



In continuous effort by Berks Homes to improve the quality of your home, we reserve the right to change features, prices, plans and specifications without notice. Floorplans and elevation renderings are artists' conceptions only. Significant changes may be made during or after the construction of the model homes. Berks Homes reserves the right to modify, relocate or eliminate any or all of the features, specifications, plan utilities, design or shape thereof, all without notice or obligations to any purchaser. Price range reflects base price only. Location premiums will be charged for certain locations and are not included in the base price of the home. Additional association fees may apply. Other fees may also apply. Amenities are proposed and planned or may be under construction. All square footages are approximate square footages of the total livable space. Water heater location deemed per city municipality code. Please see your onsite sales associate for additional information and more details. © 2022 Berks Homes. Current information as 1st December 2022

The Juliet Floorplan

Pathfinder Meadows Singles



FOUNDATION

Lower Level



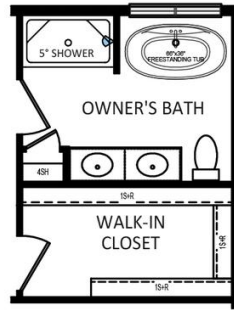
In continuous effort by Berks Homes to improve the quality of your home, we reserve the right to change features, prices, plans and specifications without notice. Floorplans and elevation renderings are artists' conceptions only. Significant changes may be made during or after the construction of the model homes. Berks Homes reserves the right to modify, relocate or eliminate any or all of the features, specifications, plan utilities, design or shape thereof, all without notice or obligations to any purchaser. Price range reflects base price only. Location premiums will be charged for certain locations and are not included in the base price of the home. Additional association fees may apply. Other fees may also apply. Amenities are proposed and planned or may be under construction. All square footages are approximate square footages of the total livable space. Water heater location deemed per city municipality code. Please see your onsite sales associate for additional information and more details. © 2022 Berks Homes. Current information as 1st December 2022

The Juliet Floorplan

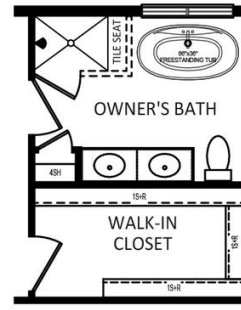
Pathfinder Meadows Singles



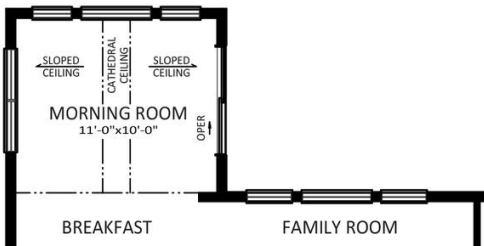
**OWNER'S BATH
DOUBLE BOWL
VANITY PACKAGE**



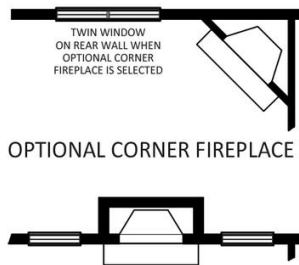
**OPTIONAL SERENITY
BATH PACKAGE
WITH 2'-0" LIVING
AREA/GARAGE EXPANSIONS**



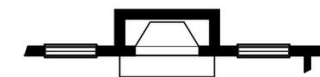
**OPTIONAL LUXURY
BATH PACKAGE
WITH 2'-0" LIVING
AREA/GARAGE EXPANSIONS**



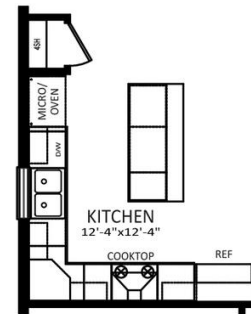
**OPTIONAL MORNING ROOM
NOT AVAILABLE IF FAMILY ROOM
EXPANSION SELECTED**



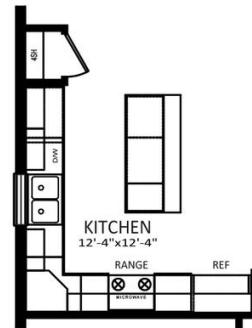
OPTIONAL CORNER FIREPLACE



**OPTIONAL REAR WALL FIREPLACE
NOT AVAILABLE W/ MORNING ROOM**



**OPTIONAL
GOURMET KITCHEN
INCLUDES ISLAND**



**OPTIONAL
ALTERNATE KITCHEN
INCLUDES ISLAND**

First Level Options



In continuous effort by Berks Homes to improve the quality of your home, we reserve the right to change features, prices, plans and specifications without notice. Floorplans and elevation renderings are artists' conceptions only. Significant changes may be made during or after the construction of the model homes. Berks Homes reserves the right to modify, relocate or eliminate any or all of the features, specifications, plan utilities, design or shape thereof, all without notice or obligations to any purchaser. Price range reflects base price only. Location premiums will be charged for certain locations and are not included in the base price of the home. Additional association fees may apply. Other fees may also apply. Amenities are proposed and planned or may be under construction. All square footages are approximate square footages of the total livable space. Water heater location deemed per city municipality code. Please see your onsite sales associate for additional information and more details. © 2022 Berks Homes. Current information as 1st December 2022