

6320 Liam Drive

MODEL HOME

FLOORPLAN
Black Cherry
COMMUNITY
Hills At Valley View



**4
Beds**



**3.5
Baths**



**2-Car
Garage**



**2961
Sq. Ft.**



Step into nearly 3,000 square feet of thoughtfully designed living space in this beautiful model home. The open-concept layout welcomes you with a bright and airy atmosphere, enhanced by upgraded windows in the family room and added recessed lighting in the flex room and loft. At the center of the home, the upgraded kitchen combines functionality with high-end finishes—featuring quartz countertops, a tile backsplash, stainless steel appliances, an island, upgraded cabinetry, recessed lighting, and an additional window that invites in natural light. Upstairs, the spacious owner's suite offers a private escape, complete with a double bowl vanity and a tiled shower with built-in seat. The finished walkout basement provides even more room to live, work, or play—with a full bath and easy access to the backyard. Throughout...

Southern York Country School District

Sales Office Hours

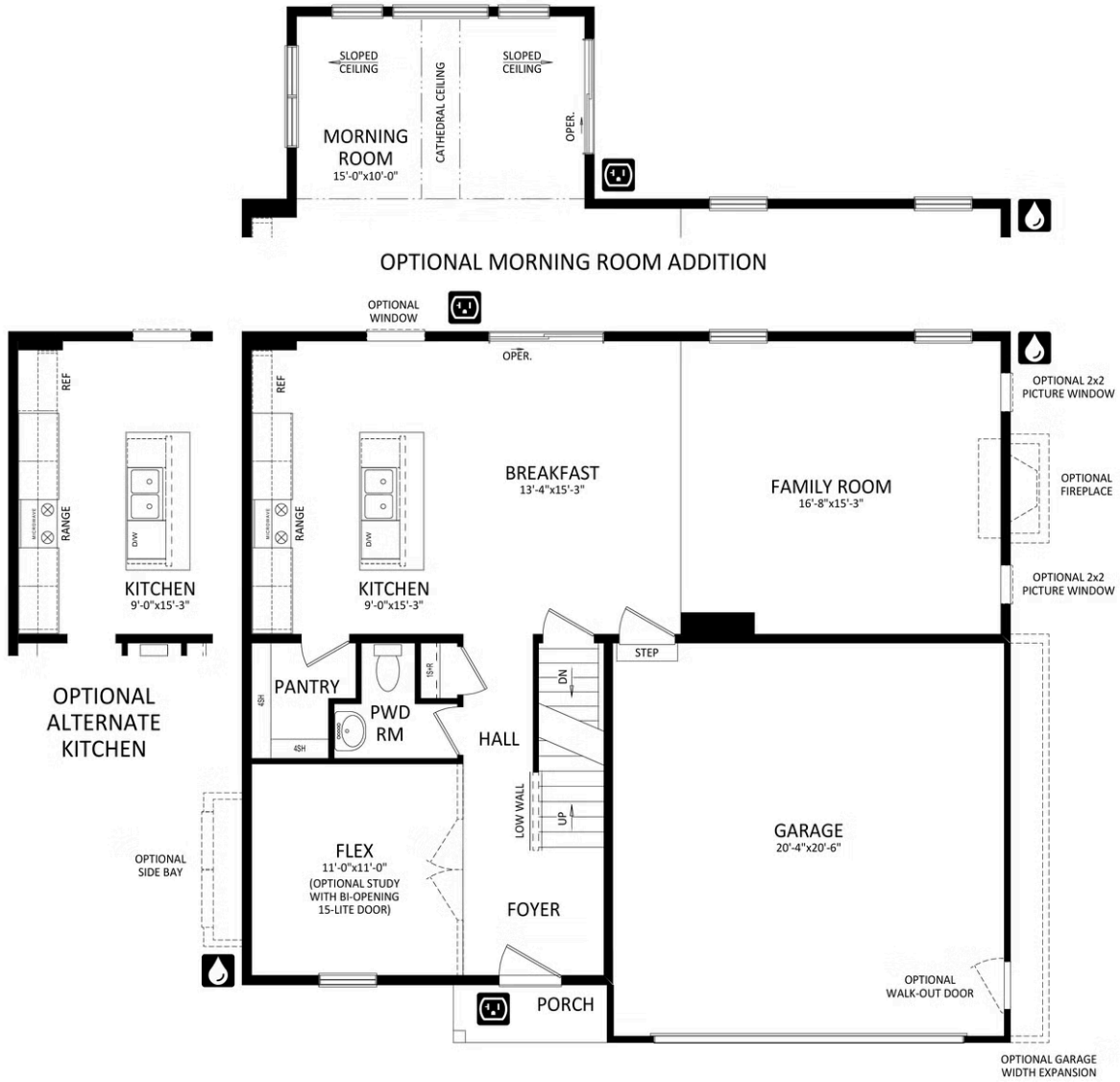
By Appointment: Open Wednesday - Saturday 10:00 am - 5:00 pm | Closed Sundays, Mondays, and Tuesdays



Have Questions? Ask...
KELLY

(484) 772-2693 / bhmarketing@berkshomes.com





FIRST LEVEL



Have Questions? Ask...
KELLY

(484) 772-2693 / bhmarketing@berkshomes.com





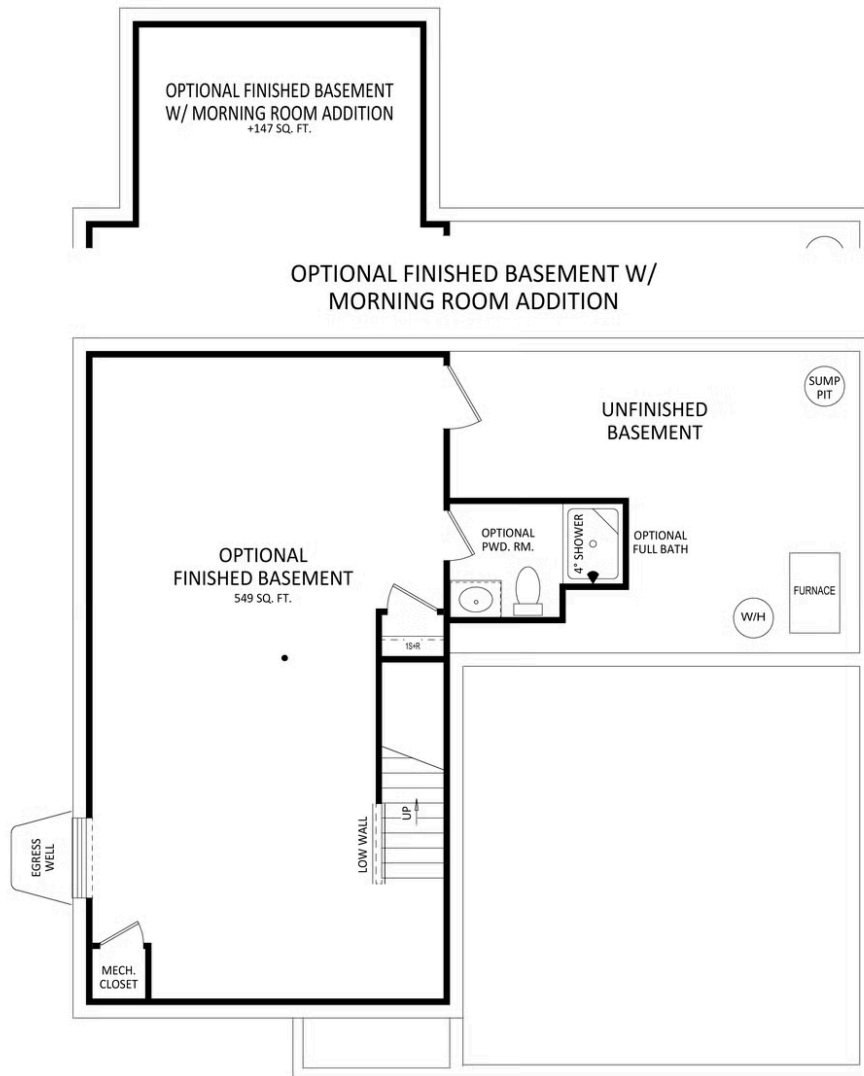
SECOND LEVEL



Have Questions? Ask...
KELLY

(484) 772-2693 / bhmarketing@berkshomes.com





LOWER LEVEL



Have Questions? Ask...
KELLY

(484) 772-2693 / bhmarketing@berkshomes.com

