

COMMUNITY
Hills At Valley View

PRICED FROM
\$349,990



**3
Beds**



**2.5
Baths**



**2-Car
Garage**



1,725

-

**2,411
Sq. Ft.**

At 1,700+ square feet, the Willow floorplan proves that good things come in small packages. This home offers the convenience of first-floor living in a 2-story design. A well-appointed kitchen with an island and breakfast area anchors a spacious first floor with a generous primary suite and a walk-in closet. The second floor boasts two bedrooms, a full bath, and a loft perfect for a kid's play area or sitting room to enjoy a good book. Available upgrades include an alternate kitchen, double-bowl vanity in the primary bath, or finishing the basement for a perfect place to relax and entertain friends and family.

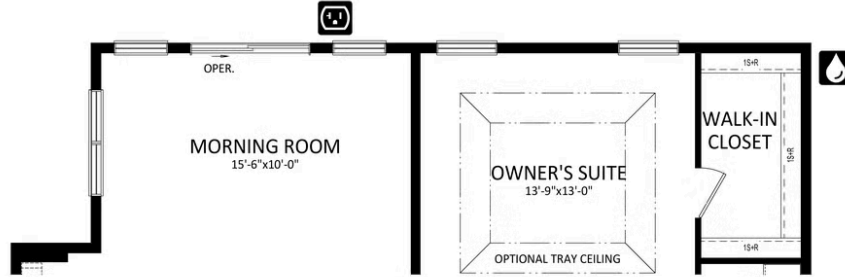


Have Questions? Ask...

KELLY

(484) 772-2693 / bhmarketing@berkshomes.com





OPTIONAL MORNING ROOM ADDITION



FIRST LEVEL

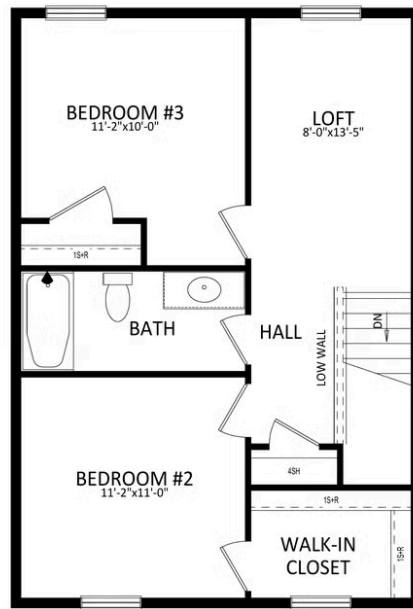


Have Questions? Ask...

KELLY

(484) 772-2693 / bhmarketing@berkshomes.com





ELEVATION "A" & "C"

SECOND LEVEL

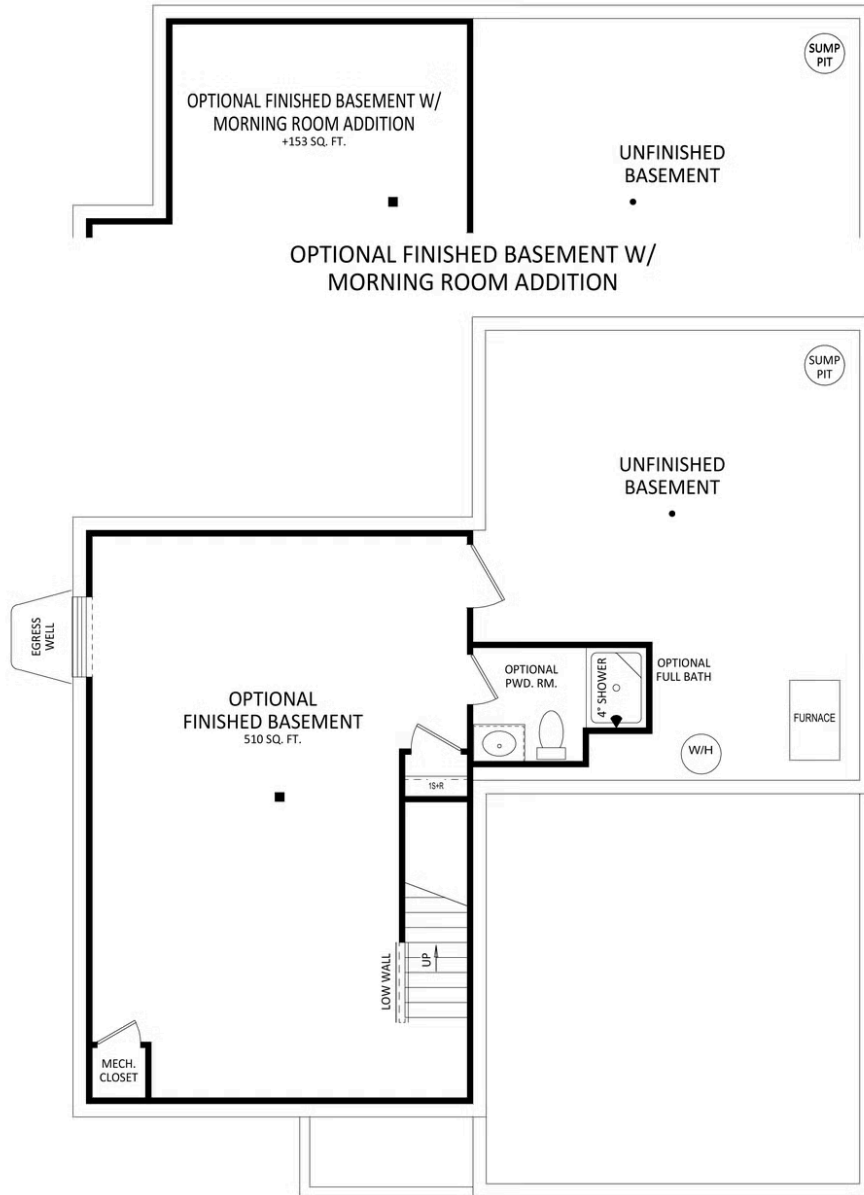


Have Questions? Ask...

KELLY

(484) 772-2693 / bhmarketing@berkshomes.com





LOWER LEVEL

Have Questions? Ask...

KELLY

(484) 772-2693 / bhmarketing@berkshomes.com

