

COMMUNITY  
**Logan Meadows**

PRICED FROM  
**\$475,990**



**3  
Beds**



**2  
Baths**



**2-Car  
Garage**



**1,662  
-  
2,476  
Sq. Ft.**

The Abbey is a spacious single-story new home with 3 bedrooms and 2 bathrooms. Its open and inviting floor plan features a large family room that seamlessly connects to the combined kitchen and dining area, creating a perfect space for entertaining and spending quality time with family and friends. The primary suite is a peaceful retreat with an impressive walk-in closet and a private bath conveniently located next to the built-in laundry room. Two additional bedrooms and another full bath throughout this new home by Berks Homes provide ample space for family members or guests to stay. With options to upgrade the bathroom, add a light-drenched sunroom off the kitchen, include a fireplace in the living room, or finish the basement, homeowners have the opportunity to customize this new home by Berks Homes to their unique preferences and needs.

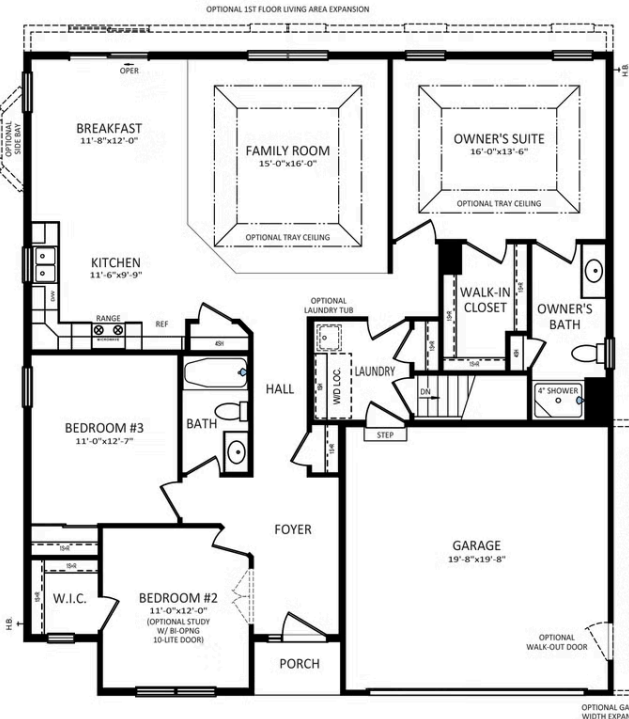
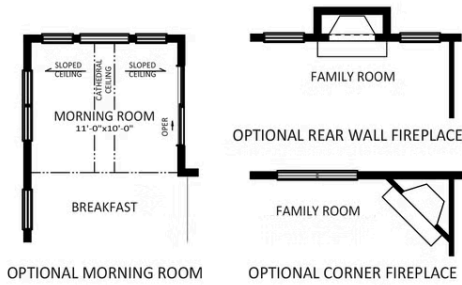


**Have Questions? Ask...**

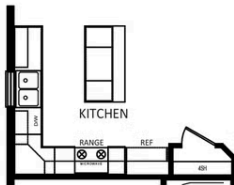
**KELLY**

(484) 772-2693 / [bhmarketing@berkshomes.com](mailto:bhmarketing@berkshomes.com)





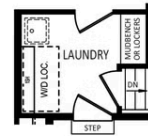
OPTIONAL GOURMET KITCHEN  
ONLY AVAILABLE W/ 9FT. FIRST FLOOR



OPTIONAL ALTERNATE KITCHEN



OWNER'S BATH  
DOUBLE BOWL  
VANITY PACKAGE



OPTIONAL MUDBENCH  
ONLY AVAILABLE W/ BASEMENT FOUNDATION

**FIRST FLOOR**

**FIRST LEVEL**

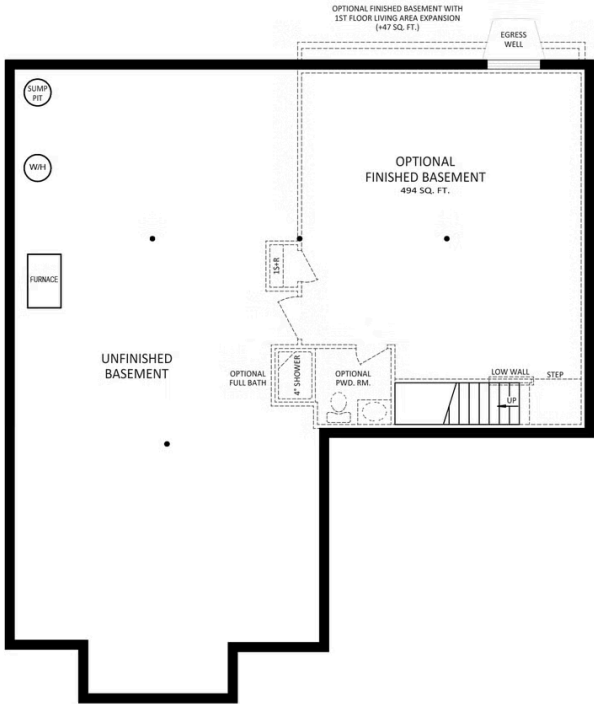


**Have Questions? Ask...**

**KELLY**

(484) 772-2693 / [bhmarketing@berkshomes.com](mailto:bhmarketing@berkshomes.com)





FOUNDATION

LOWER LEVEL



**Have Questions? Ask...**

KELLY

(484) 772-2693 / [bhmarketing@berkshomes.com](mailto:bhmarketing@berkshomes.com)

