

389 Santa Anita Drive

MODEL HOME

FLOORPLAN
Blue Ridge
COMMUNITY
Logan Meadows



**4
Beds**



**3.5
Baths**



**2-Car
Garage**



**3321
Sq. Ft.**



Welcome to the beautiful Logan Meadows model home, where modern design meets everyday functionality. Enter through the foyer and find a flex room ideal for an office or extra living space. The open-concept main level showcases a stylish kitchen with upgraded features and recessed lighting, seamlessly flowing into the family room with a gas fireplace and ample natural light.

The adjacent morning room offers a great spot for casual dining, and a 14x10 composite deck extends your living space outdoors. The main level also includes a practical mudroom with lockers and a powder room.

Downstairs, the finished basement provides additional living space and a full bath. ...

Northern York County School District

Sales Office Hours

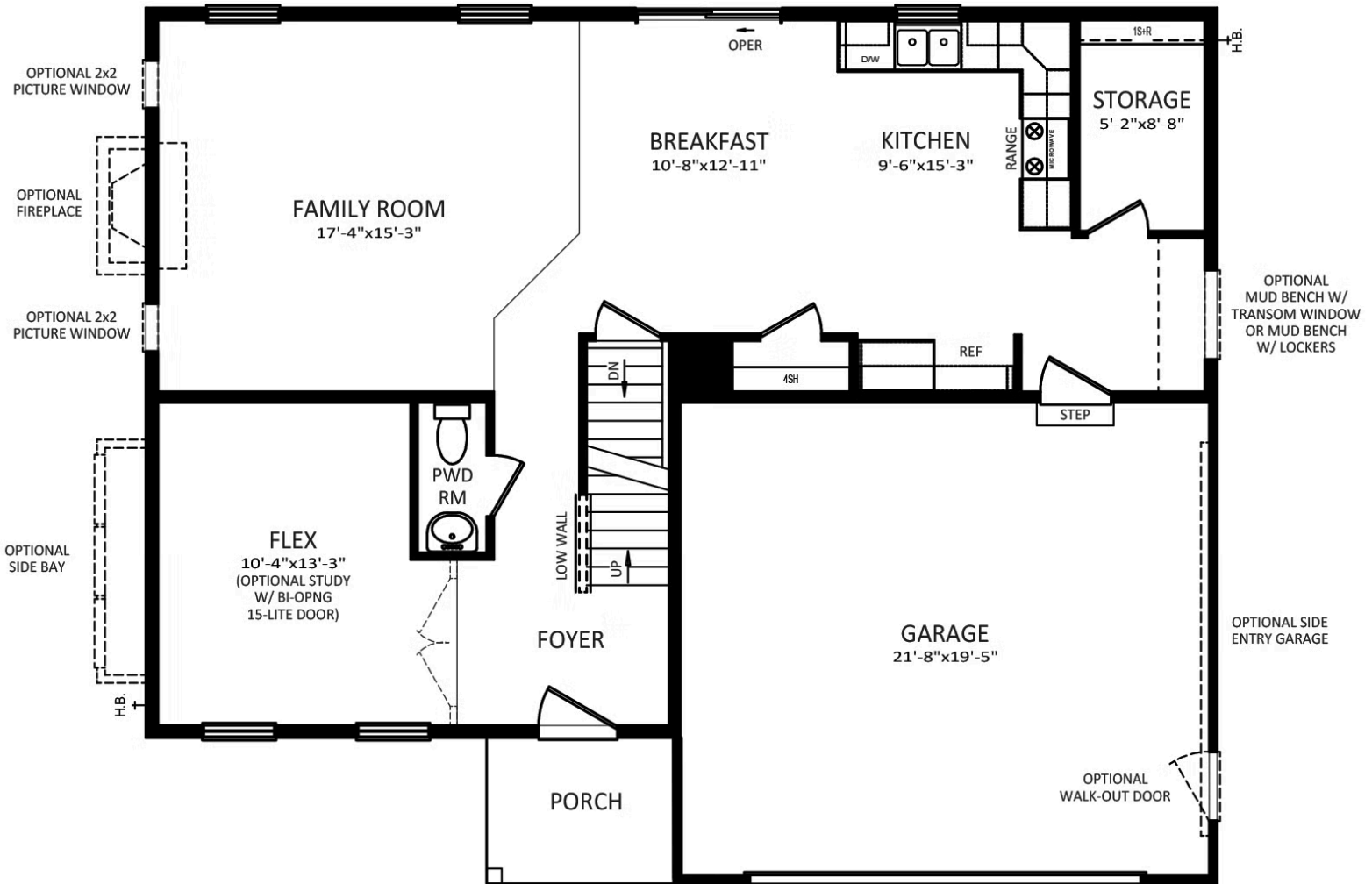
Open Wednesday - Saturday 10:00 am - 5:00 pm | Tuesdays By Appointment Only | Closed Sundays and Mondays



Have Questions? Ask...
KELLY

(484) 772-2693 / bhmarketing@berkshomes.com





FIRST FLOOR

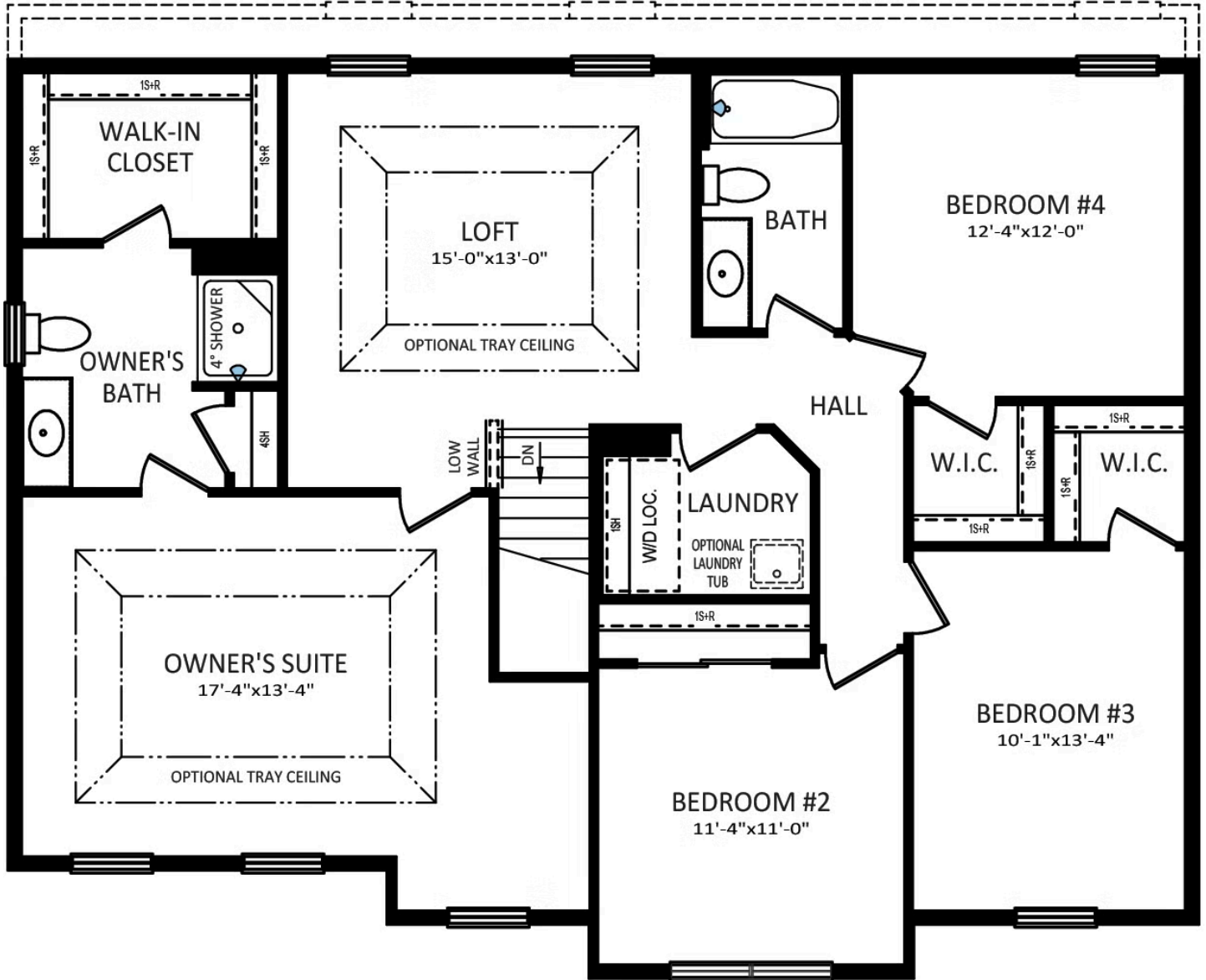


Have Questions? Ask...
KELLY

(484) 772-2693 / bhmarketing@berkshomes.com



OPTIONAL 2ND FLOOR CANTILEVERED 2' EXPANSION



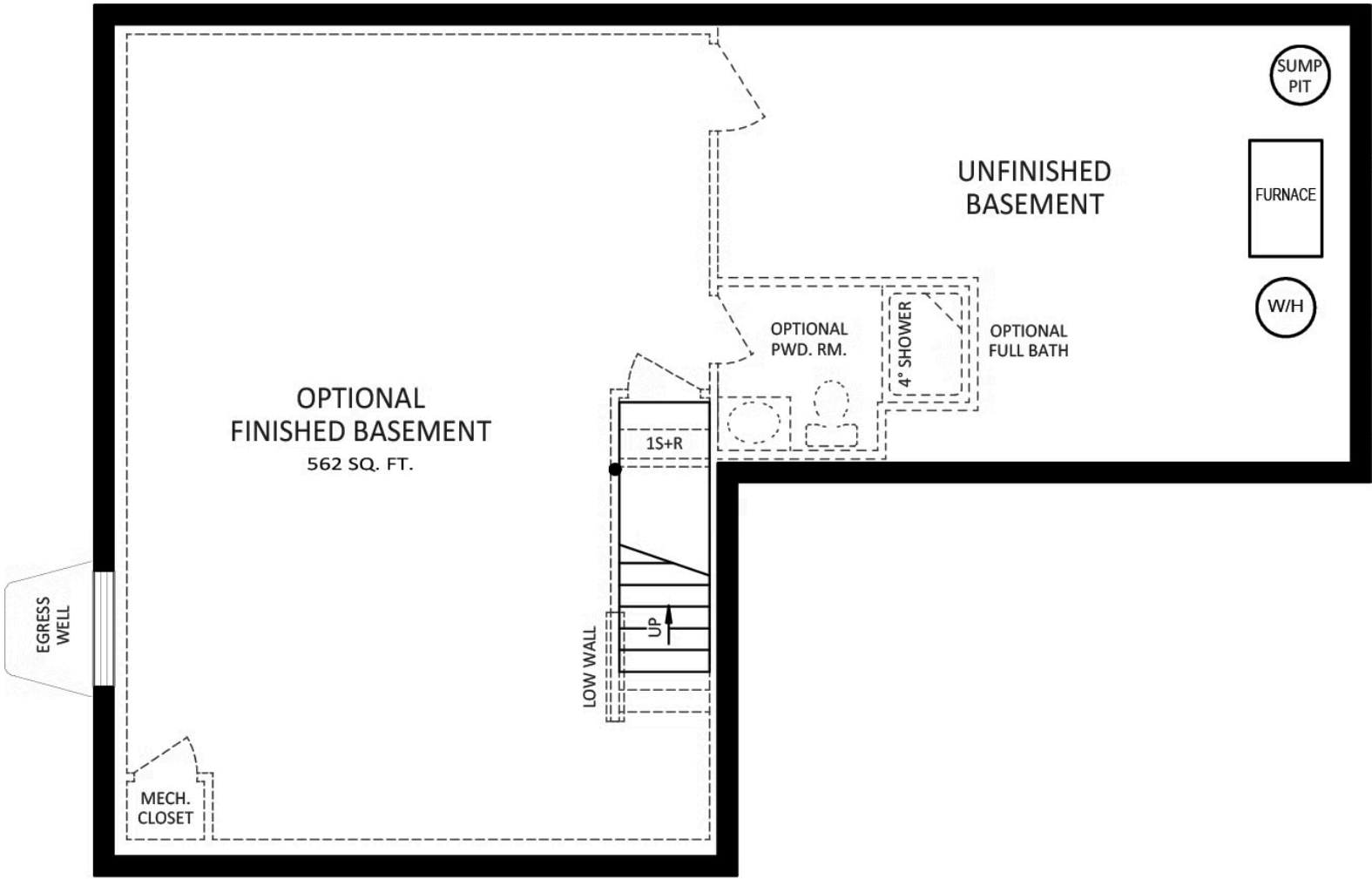
SECOND FLOOR



Have Questions? Ask...
KELLY

(484) 772-2693 / bhmarketing@berkshomes.com





FOUNDATION



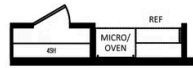
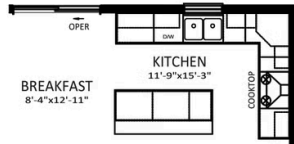
Have Questions? Ask...
KELLY

(484) 772-2693 / bhmarketing@berkshomes.com





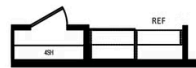
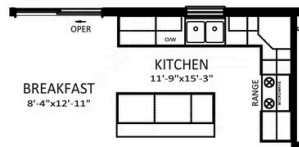
OPTIONAL MORNING ROOM



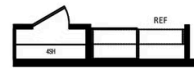
OPTIONAL GOURMET KITCHEN
ONLY AVAILABLE W/ 9' FIRST FLOOR



OPTIONAL GOURMET KITCHEN
WITH MORNING ROOM
ONLY AVAILABLE W/ 9' FIRST FLOOR



OPTIONAL ALTERNATE KITCHEN



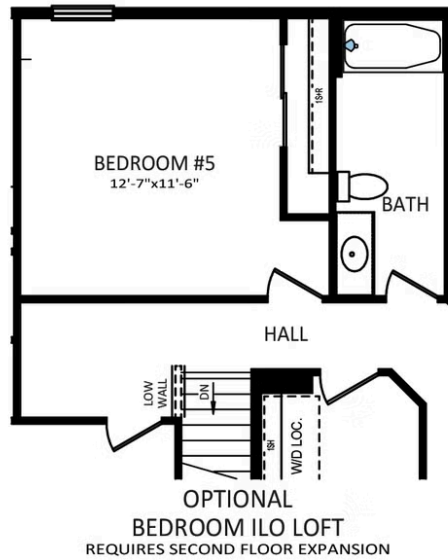
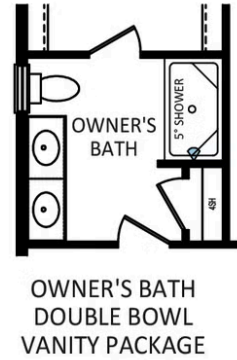
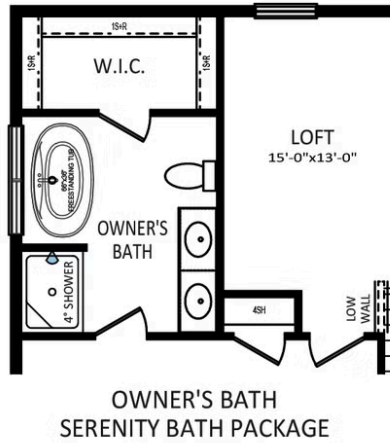
OPTIONAL ALTERNATE KITCHEN
WITH MORNING ROOM



Have Questions? Ask...
KELLY

(484) 772-2693 / bhmarketing@berkshomes.com





Have Questions? Ask...
KELLY

(484) 772-2693 / bhmarketing@berkshomes.com

