

Copper Beech

COMMUNITY
Logan Meadows

PRICED FROM
\$535,990



**4 - 6
Beds**



**2.5 -
6
Baths**



**2-Car
Garage**



**2,920
-
4,226
Sq. Ft.**

The Copper Beech is a functional and stylish 4-bedroom, 2.5-bathroom home with an open floor plan design that expertly captures what today's homeowners seek. The kitchen opens up to the breakfast area and family room, creating a seamless flow for everyday living and entertaining, while the den off the family room provides additional space for relaxation or work. The first floor of this new home also includes a formal dining room and flex room, located just inside the foyer, that offers added versatility for all of your needs. Upstairs, the primary suite boasts two walk-in closets and a full private bathroom, ensuring a comfortable and private retreat for homeowners. Three additional bedrooms, a full bathroom, and a laundry room complete the second floor, providing ample space for family members. With options to add a first-floor bedroom and full bath, choose from multiple alternate kitchen layouts, incorporate a morning room, add a loft, select from various primary bath upgrades, and finish the basement, you can personalize this home to suit your lifestyle and preferences.

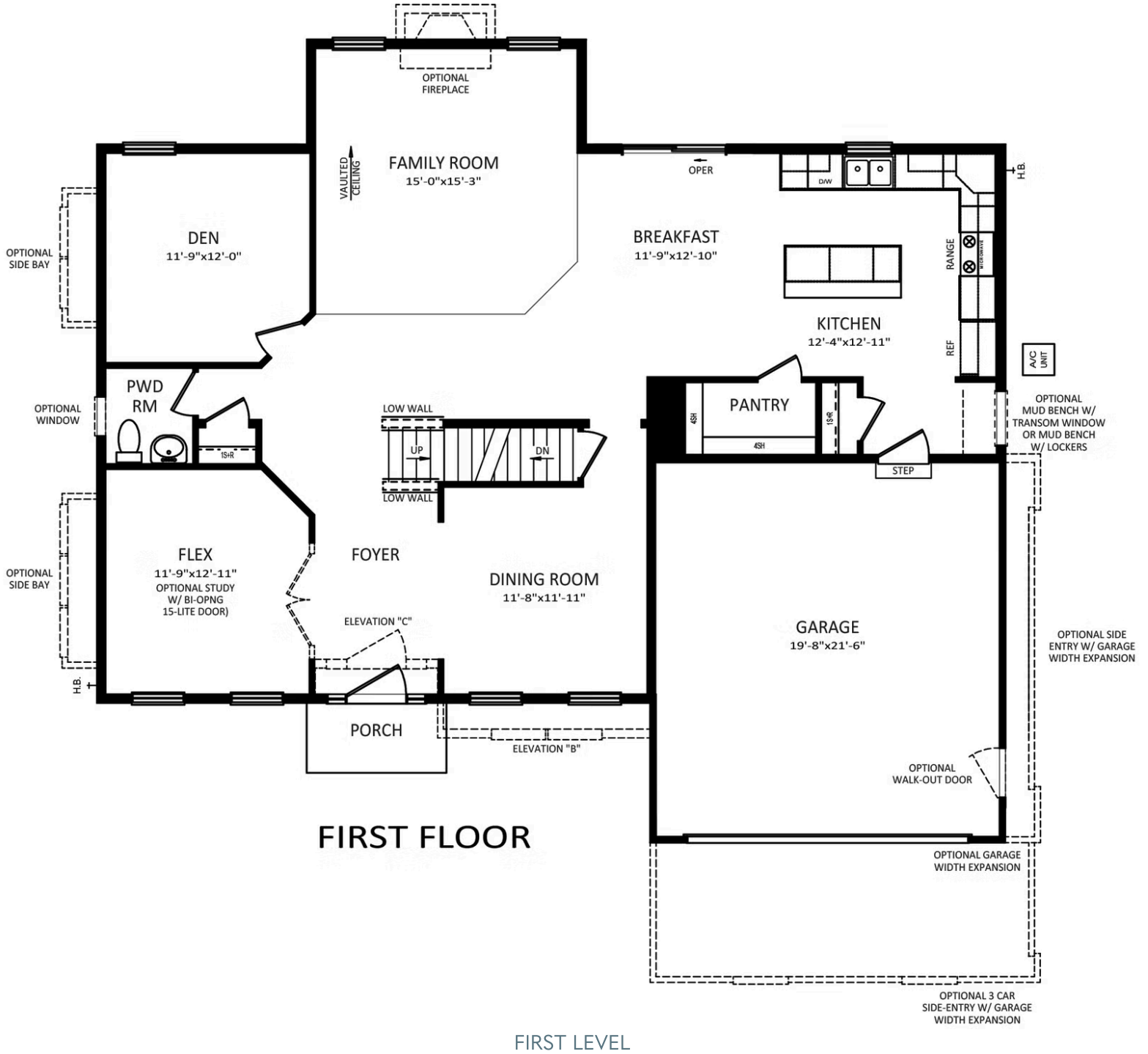


Have Questions? Ask...

KELLY

(484) 772-2693 / bhmarketing@berkshomes.com



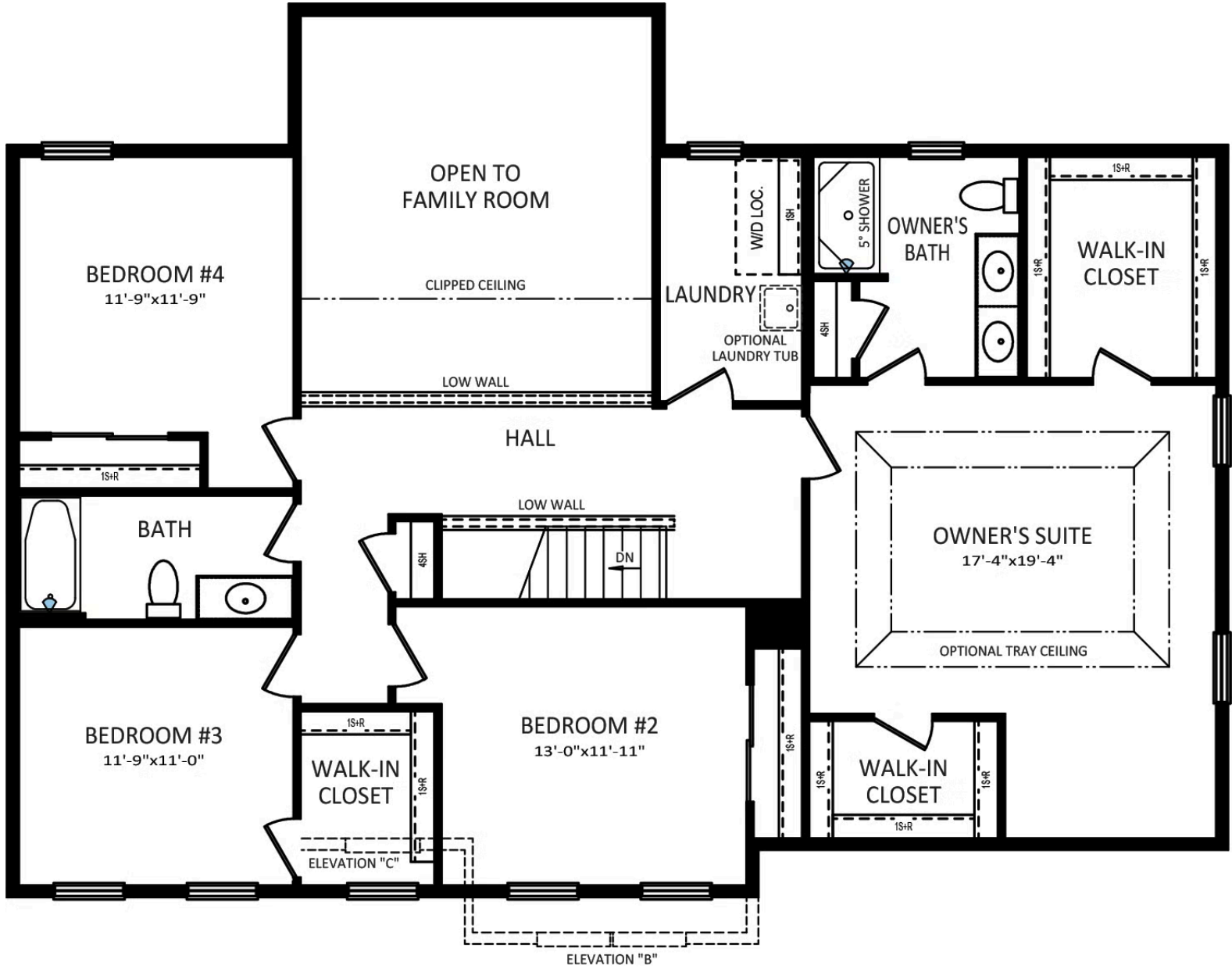


Have Questions? Ask...

KELLY

(484) 772-2693 / bhmarketing@berkshomes.com





SECOND FLOOR

SECOND LEVEL

Have Questions? Ask...

KELLY

(484) 772-2693 / bhmarketing@berkshomes.com



OPTIONAL FINISHED BASEMENT
+72 SQ. FT.
(WITH BEDROOM #5 OPTION)

OPTIONAL
FINISHED BASEMENT
746 SQ. FT.

OPTIONAL
PWD. RM.

OPTIONAL
FULL BATH

SUMP
PIT

UNFINISHED
BASEMENT

FURNACE

W/H

EGRESS
WELL

15+R

UP

FOUNDATION

LOWER LEVEL

Have Questions? Ask...

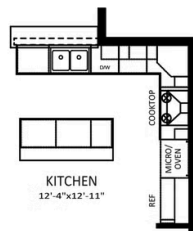
KELLY

(484) 772-2693 / bhmarketing@berkshomes.com

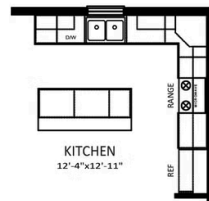




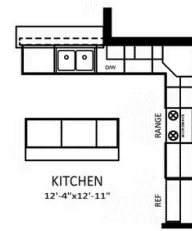
OPTIONAL
GOURMET KITCHEN



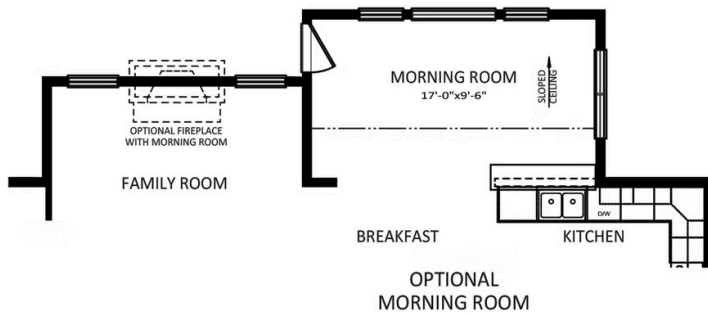
OPTIONAL GOURMET KITCHEN
WITH MORNING ROOM



OPTIONAL
ALTERNATE KITCHEN



OPTIONAL ALTERNATE KITCHEN
WITH MORNING ROOM



OPTIONAL
MORNING ROOM



OPTIONAL FIRST FLOOR
BEDROOM AND BATH ADDITION

FIRST LEVEL OPTIONS

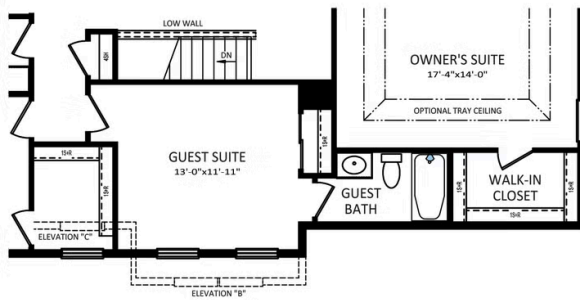


Have Questions? Ask...

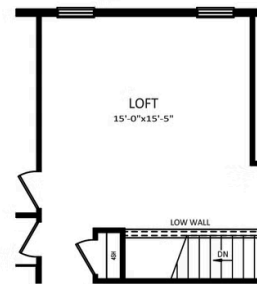
KELLY

(484) 772-2693 / bhmarketing@berkshomes.com

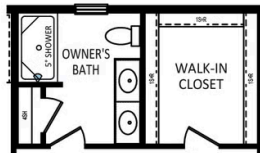




OPTIONAL GUEST SUITE



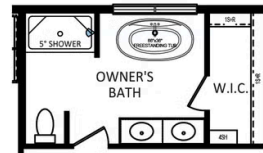
OPTIONAL LOFT ADDITION



OPTIONAL OWNER'S BATH
DOUBLE BOWL VANITY PACKAGE



OPTIONAL OWNER'S BATH
LUXURY BATH PACKAGE



OPTIONAL OWNER'S BATH
SERENITY BATH PACKAGE

SECOND LEVEL OPTIONS



Have Questions? Ask...

KELLY

(484) 772-2693 / bhmarketing@berkshomes.com

