



\$309,990

Blue Ridge



2,420
Sq.Ft.



4
Bedrooms



2.5
Bathrooms



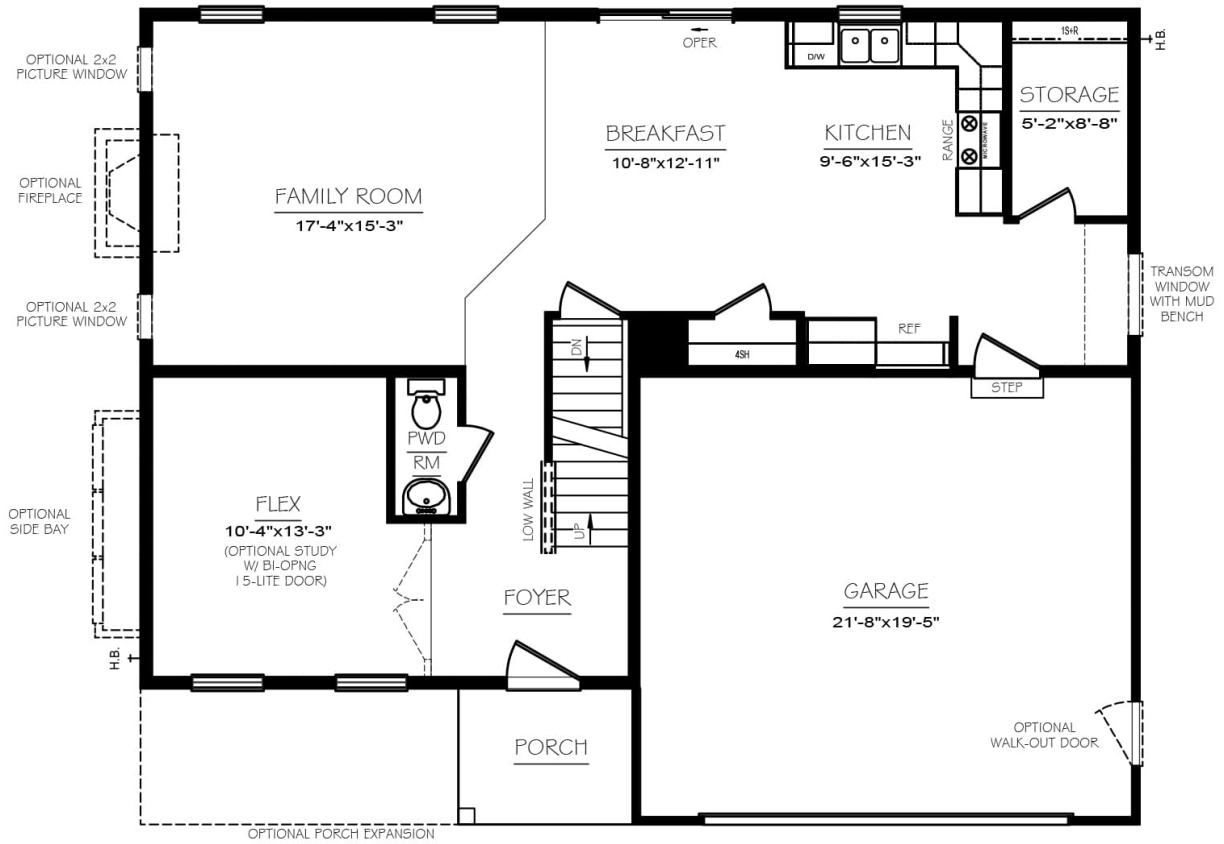
2
Stories



2 - CAR
Garage

Over 2500 sqft of living space in the brand new home! The Morning Room with cathedral ceilings and the Owner's Suite Tray Ceiling additions really open up this already spacious home. The level 3 upgraded cabinetry and quartz counter tops flow beautifully with the luxury vinyl flooring. This house is under construction and available for sale now! It is scheduled to be complete this soon. Donwood Estates itself is a hidden gem. Tucked away in Dover, this neighborhood offers large lots with a quiet rural feel. accompanied by the convenience of close shopping. Get to Maryland, Harrisburg or Lancaster easily with 83 and route 30 close by. *Pictures of interior are of the "Blue Ridge" model home. 2313 Palomino is under construction. Exterior Pictures are of 2313 Palomino*



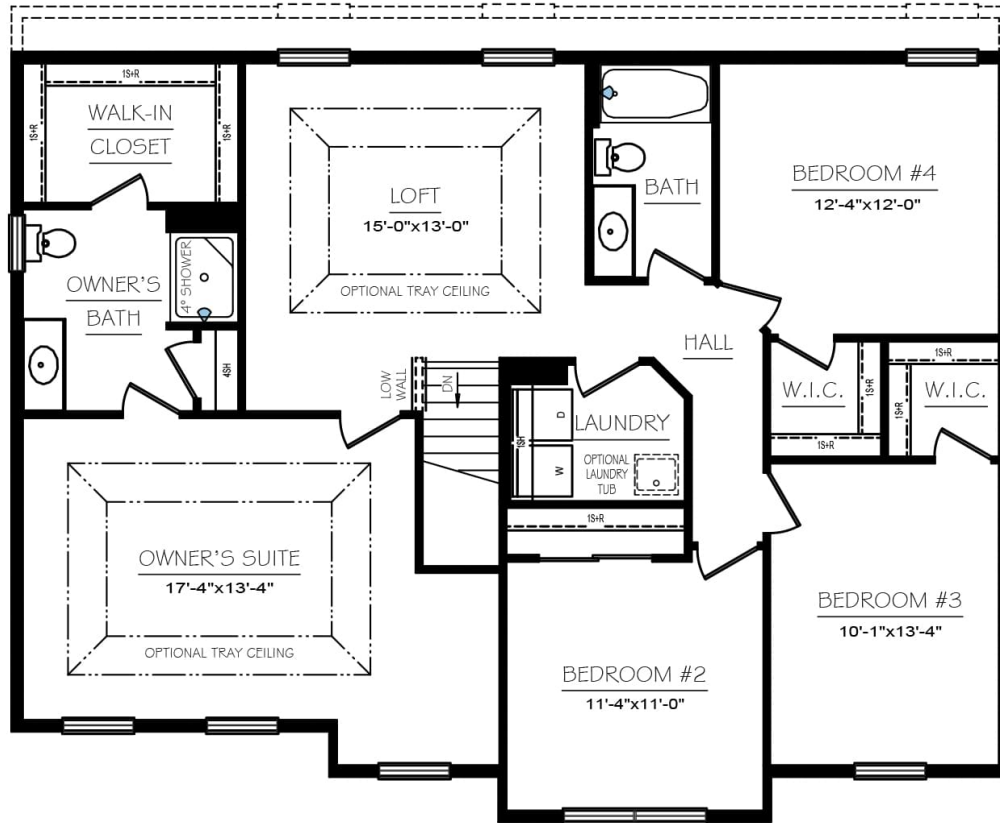


First Level



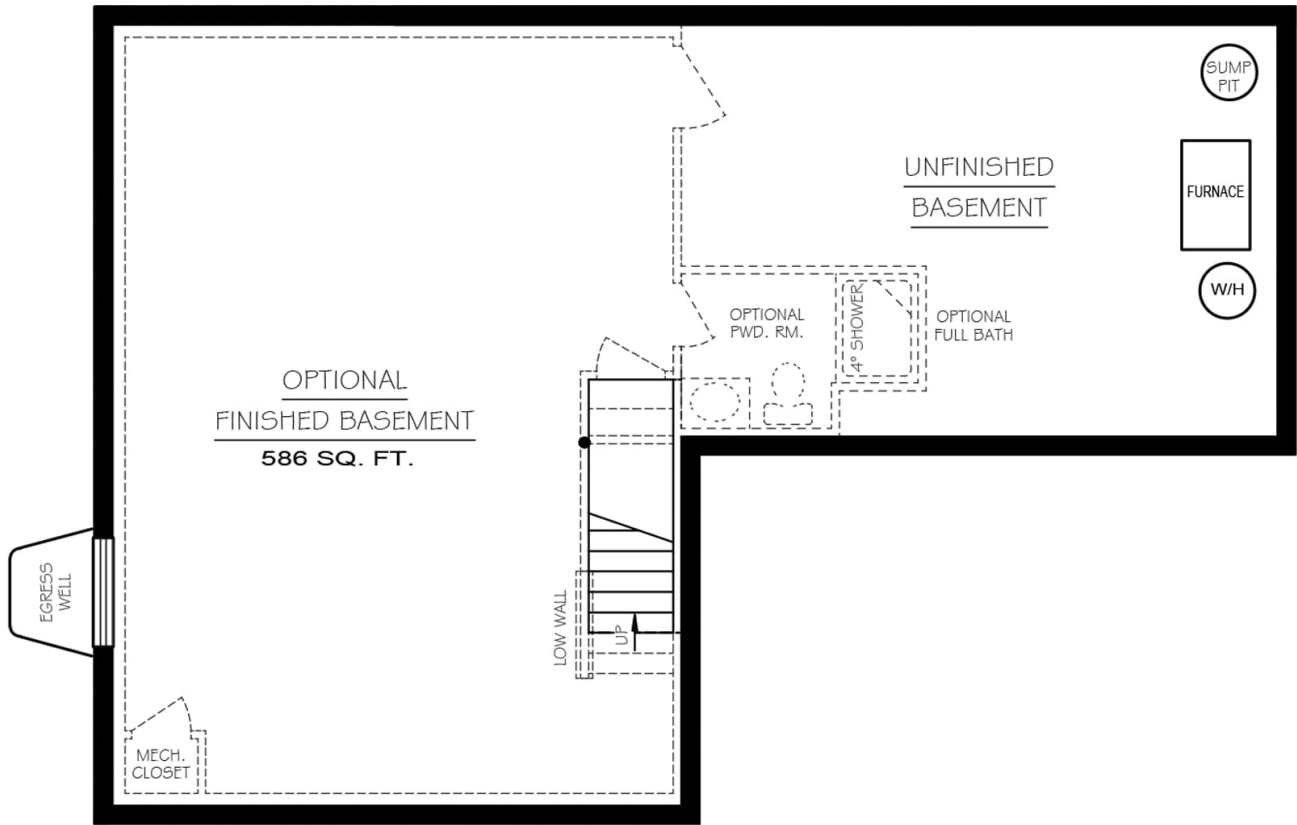


SECOND FLOOR CANTILEVER EXPANSION



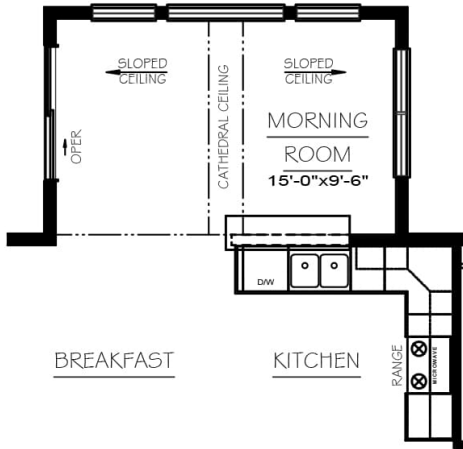
Second Level



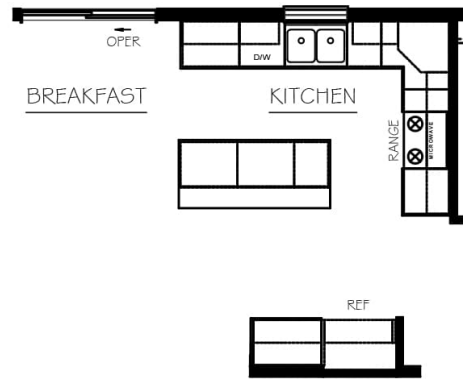


Lower Level





OPTIONAL MORNING ROOM

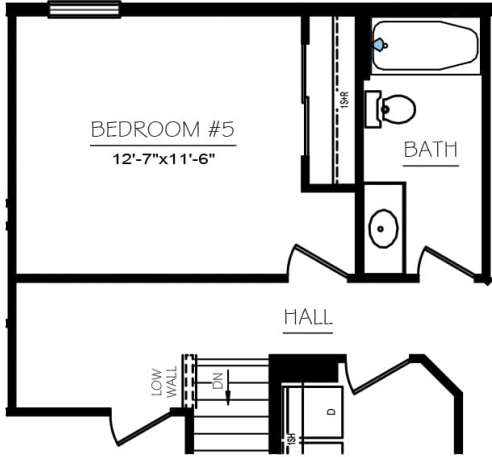


OPTIONAL ALTERNATE KITCHEN

INCLUDES ISLAND

First Level Options

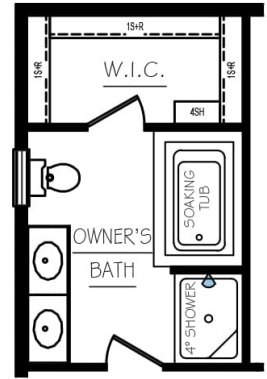




OPTIONAL
BEDROOM ILO LOFT
REQUIRES SECOND FLOOR EXPANSION



OWNER'S BATH
DOUBLE VANITY
UPGRADE PACKAGE



OWNER'S BATH
SOAKING TUB PACKAGE

Second Level Options

