

3525 Pebble Run Drive LOT 51

\$419,990

REPRESENTATIVE PHOTO



QUICK MOVE-IN

FLOORPLAN

Revere

COMMUNITY

The Seasons



**4
Beds**



**2.5
Baths**

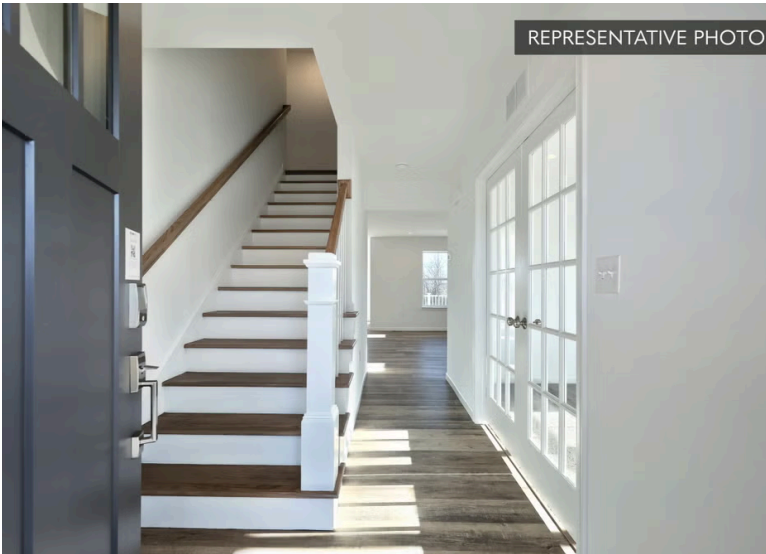


**2-Car
Garage**



**2033
Sq. Ft.**

REPRESENTATIVE PHOTO



REPRESENTATIVE PHOTO



Buyers who use our preferred partners will receive up to a \$10,000 credit in the Selection Gallery to apply toward interior finishes. The home's structural features are already in place, allowing you to focus on selecting the finishes that best fit your personal style. All interior selections must be completed by 7/18/2026.

The heart of the home is a beautifully appointed kitchen featuring an island, tile backsplash, upgraded cabinetry, stainless steel appliances, and recessed lighting — all flowing into an expanded breakfast area for extra space and everyday ease. Just off the garage entry, a mudroom bench keeps the chaos where it belongs, while a dedicated study gives you the private workspace today's lifestyle demands....

Dover Area School District

Sales Office Hours

By Appointment: Wednesday - Saturday 10:00 am - 5:00 pm |
Closed Sundays, Mondays, and Tuesdays



Have Questions? Ask...
KELLY

(484) 772-2693 / bhmarketing@berkshomes.com





FIRST FLOOR

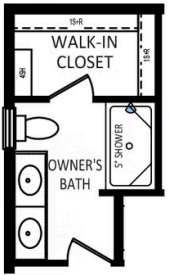
FIRST LEVEL

Have Questions? Ask...

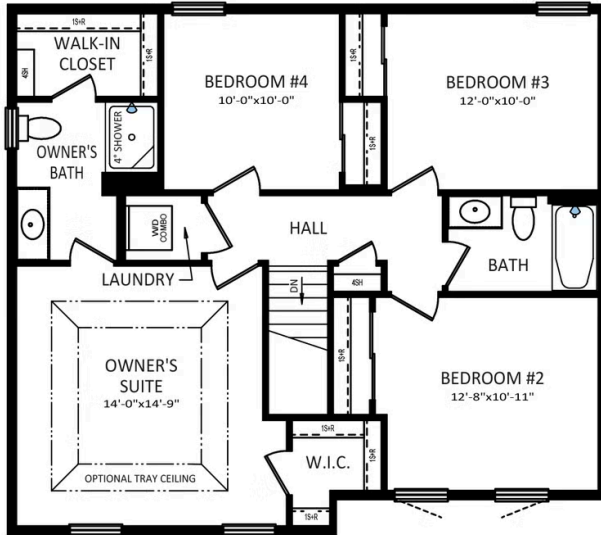
KELLY

(484) 772-2693 / bhmarketing@berkshomes.com

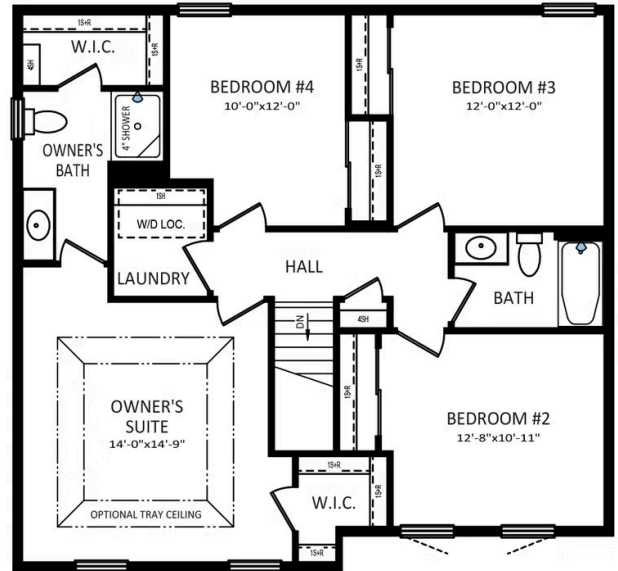




OWNER'S BATH
DOUBLE BOWL
VANITY PACKAGE



SECOND FLOOR



OPTIONAL 2ND FLOOR
CANTILEVERED 2' EXPANSION

SECOND LEVEL



Have Questions? Ask...
KELLY

(484) 772-2693 / bhmarketing@berkshomes.com





FOUNDATION

LOWER LEVEL



Have Questions? Ask...
KELLY

(484) 772-2693 / bhmarketing@berkshomes.com

