



Primrose



COMMUNITY
Stone Mill Estates Duplex Homes
PRICED FROM
\$309,990



**3
Beds**



**2.5
Baths**



**2-Car
Garage**



**2,125
-
2,655
Sq. Ft.**

This 2-story home takes duplex living to the next level with its lofty footprint, boasting 2,125 sqft. of living space, complete with a first-floor primary suite and two additional bedrooms, both outfitted with walk-in closets of their own, on the second floor, PLUS a loft. If you like natural light and warmth, this floor plan offers some great options, including a gas fireplace surrounded by 2 picture windows. Speaking of options, they don't stop there! Some additional options available are a side bay in the breakfast room, tray ceiling and double bowl vanity package in the primary suite, laundry tub in the first-floor laundry room, vaulted family room ceiling that opens through to the second floor, and a tray ceiling in the loft area. With all these beautiful features and available options, you will love the Primrose!

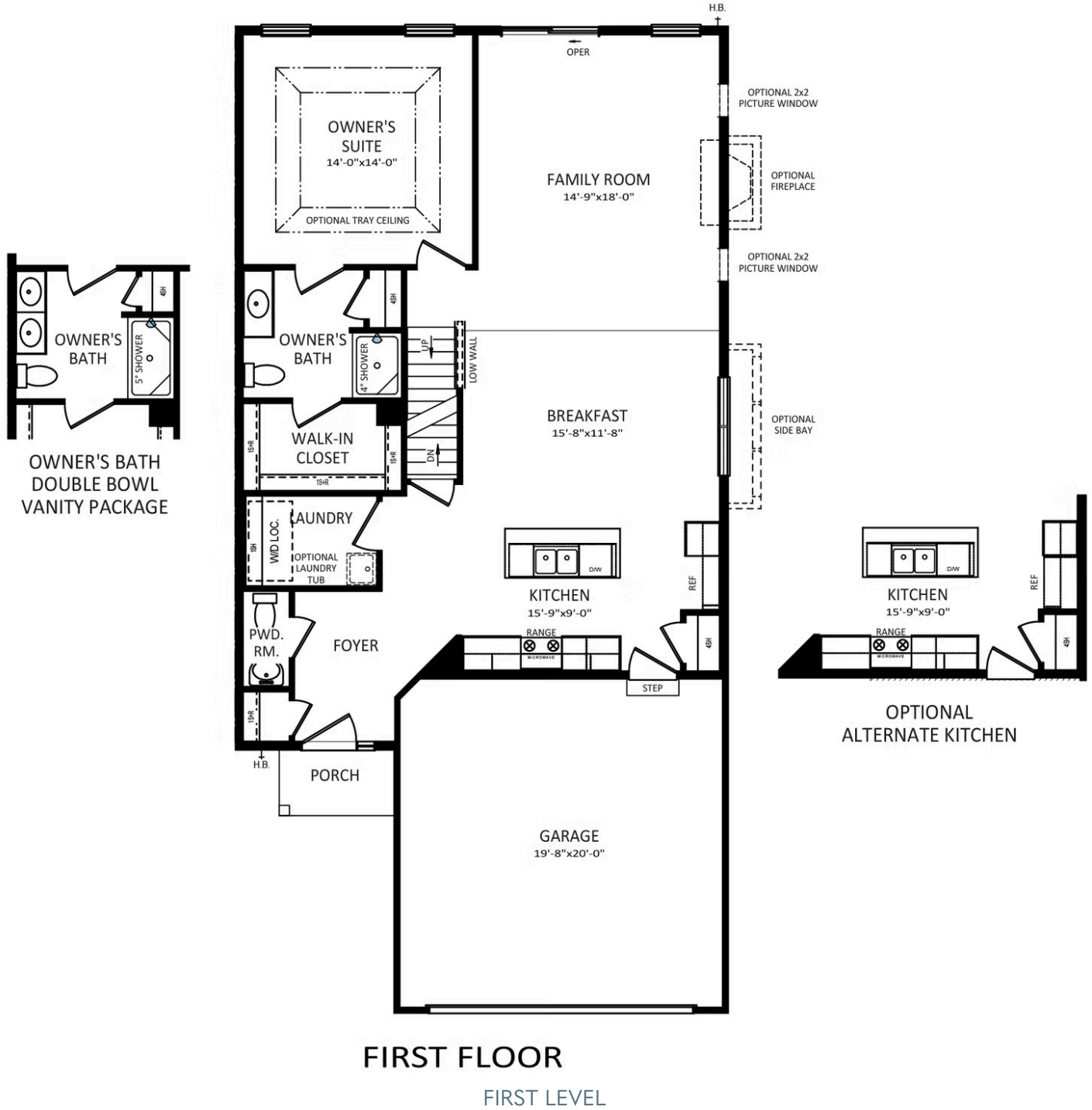


Have Questions? Ask...

KELLY

(484) 772-2693 / bhmarketing@berkshomes.com



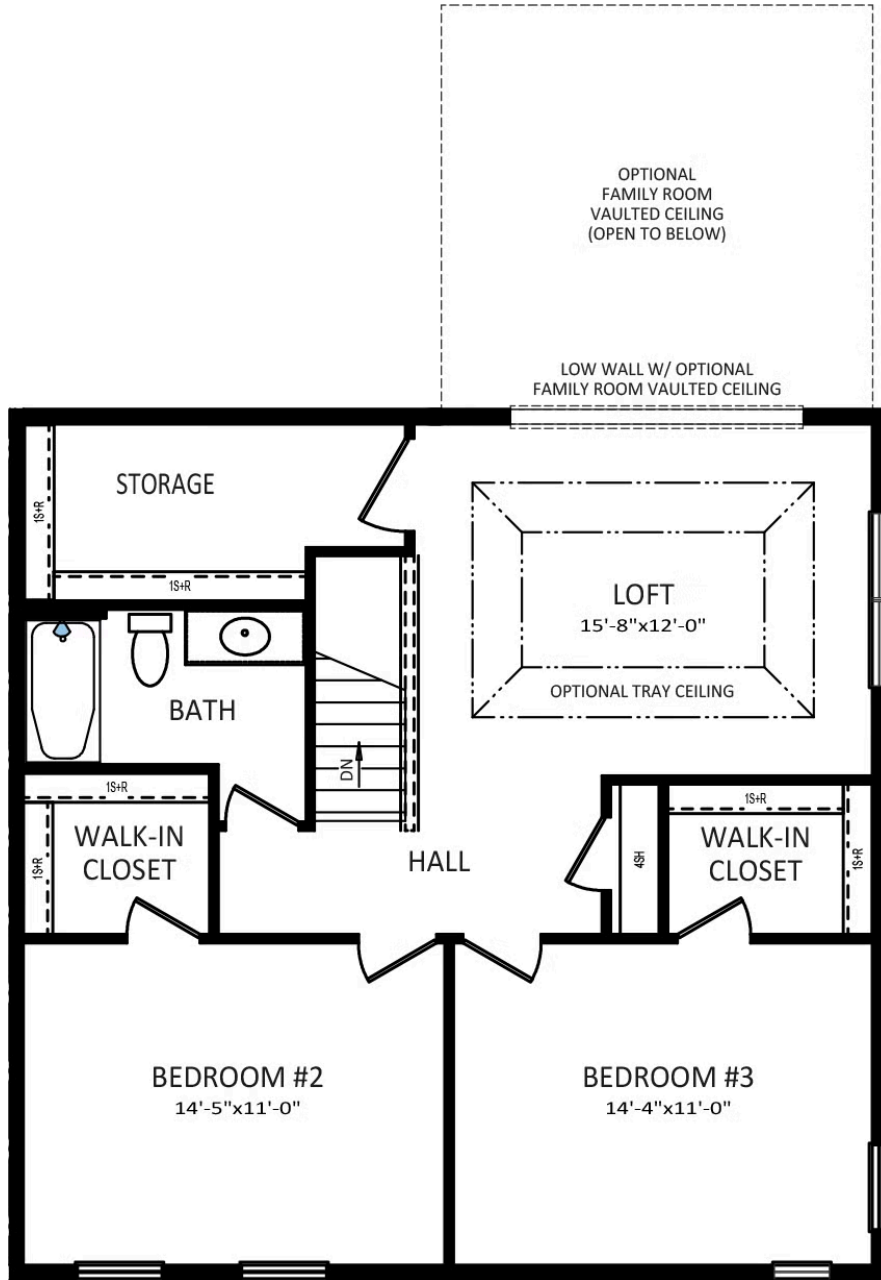


Have Questions? Ask...

KELLY

(484) 772-2693 / bhmarketing@berkshomes.com





SECOND FLOOR

SECOND LEVEL

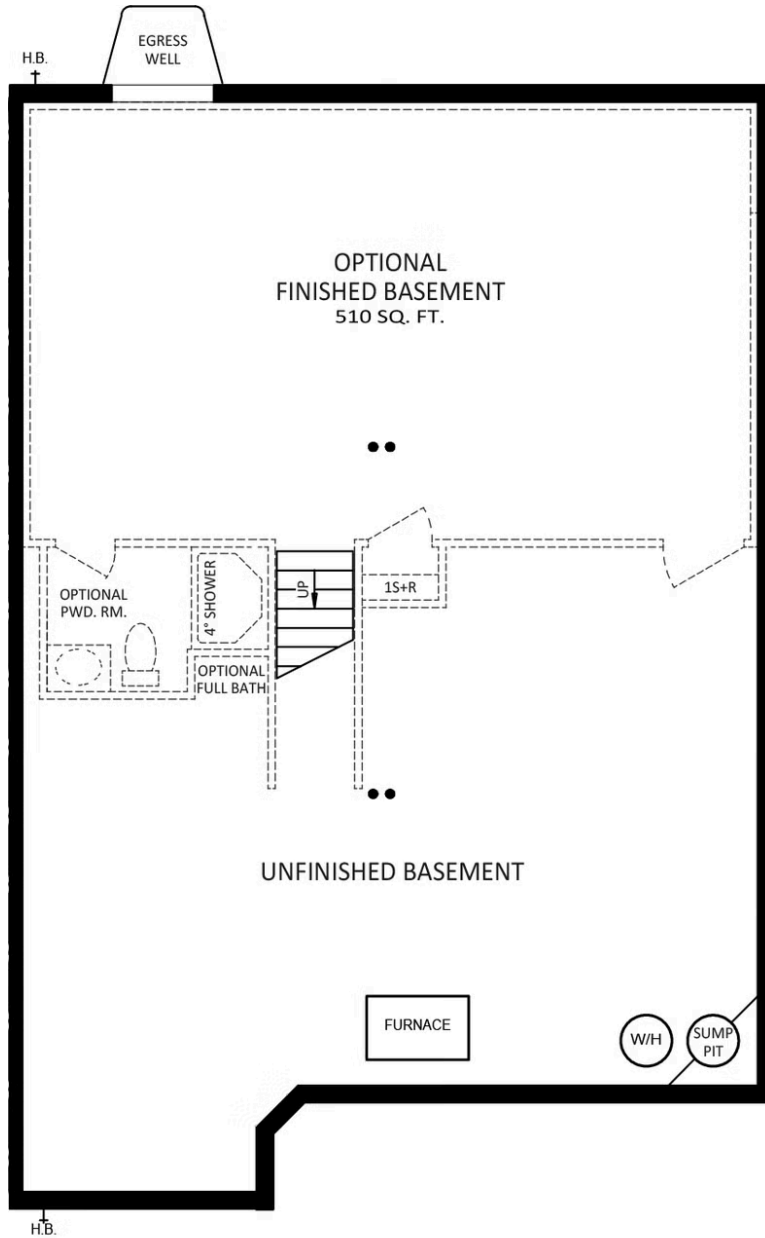


Have Questions? Ask...

KELLY

(484) 772-2693 / bhmarketing@berkshomes.com





FOUNDATION

LOWER LEVEL

Have Questions? Ask...

KELLY

(484) 772-2693 / bhmarketing@berkshomes.com

