

QUICK MOVE-IN

FLOORPLAN

Primrose

COMMUNITY

Stone Mill Estates Duplex Homes



**3
Beds**



**2.5
Baths**



**2-Car
Garage**



**2125
Sq. Ft.**



REPRESENTATIVE PHOTO

This thoughtfully designed home offers a functional layout with flexible spaces and practical upgrades throughout. The main level features an open kitchen with an island, quartz countertops, tile backsplash, upgraded cabinetry, stainless steel appliances, and recessed lighting—perfectly positioned to connect with the breakfast area and family room. The family room is enhanced with upgraded windows and recessed lighting, bringing in natural light and creating a comfortable gathering space. Engineered vinyl plank flooring runs throughout the main living areas and the owner's bath, adding durability and easy upkeep. The owner's suite includes a spacious walk-in closet and a private bath with a double bowl vanity. Upstairs, a centrally located loft with recessed lighting provides additional living space...



REPRESENTATIVE PHOTO

Susquenita School District

Sales Office Hours

Open Wednesday - Saturday 10:00 am - 5:00 pm | Tuesdays By Appointment Only | Closed Sundays and Mon



Have Questions? Ask...
KELLY

(484) 772-2693 / bhmarketing@berkshomes.com





FIRST FLOOR

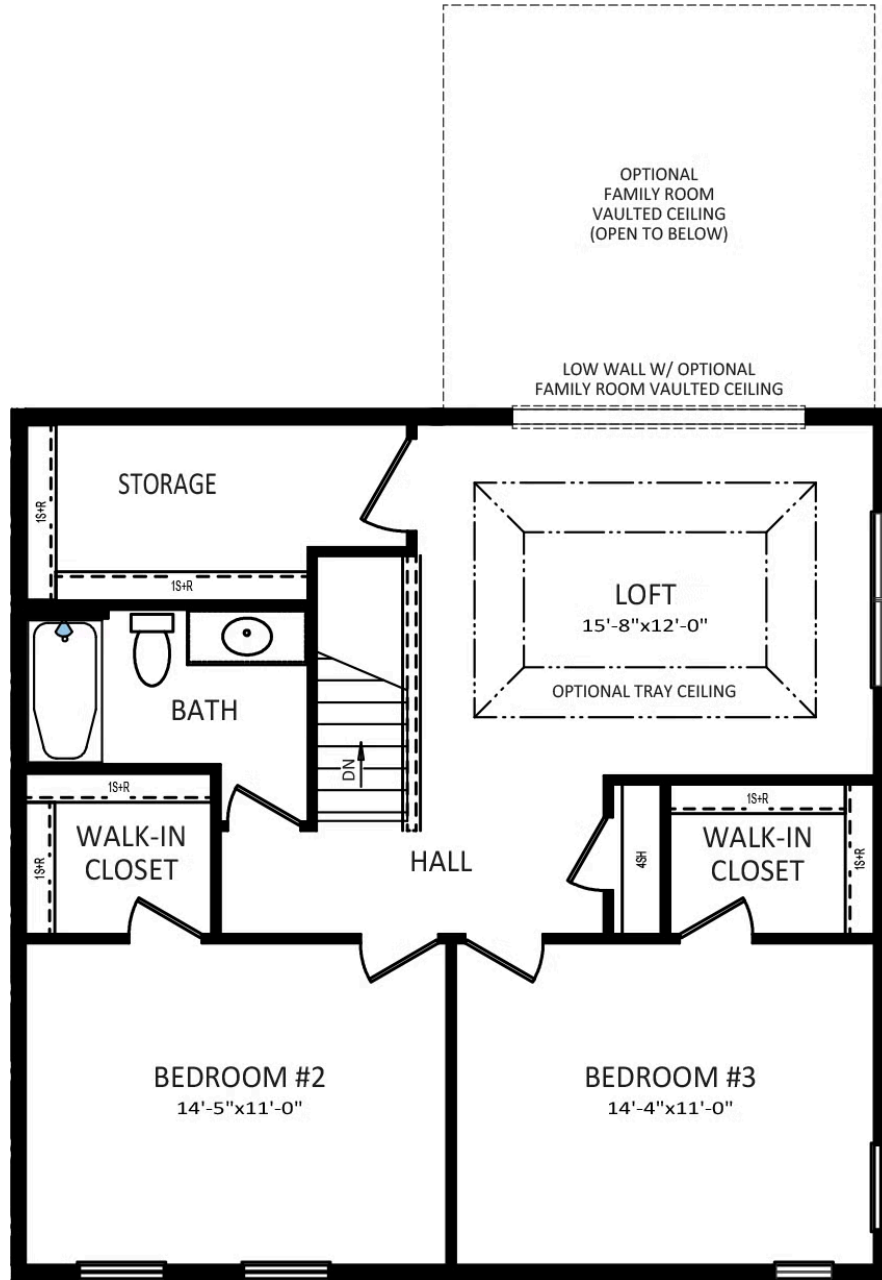
FIRST LEVEL



Have Questions? Ask...
KELLY

(484) 772-2693 / bhmarketing@berkshomes.com





SECOND FLOOR

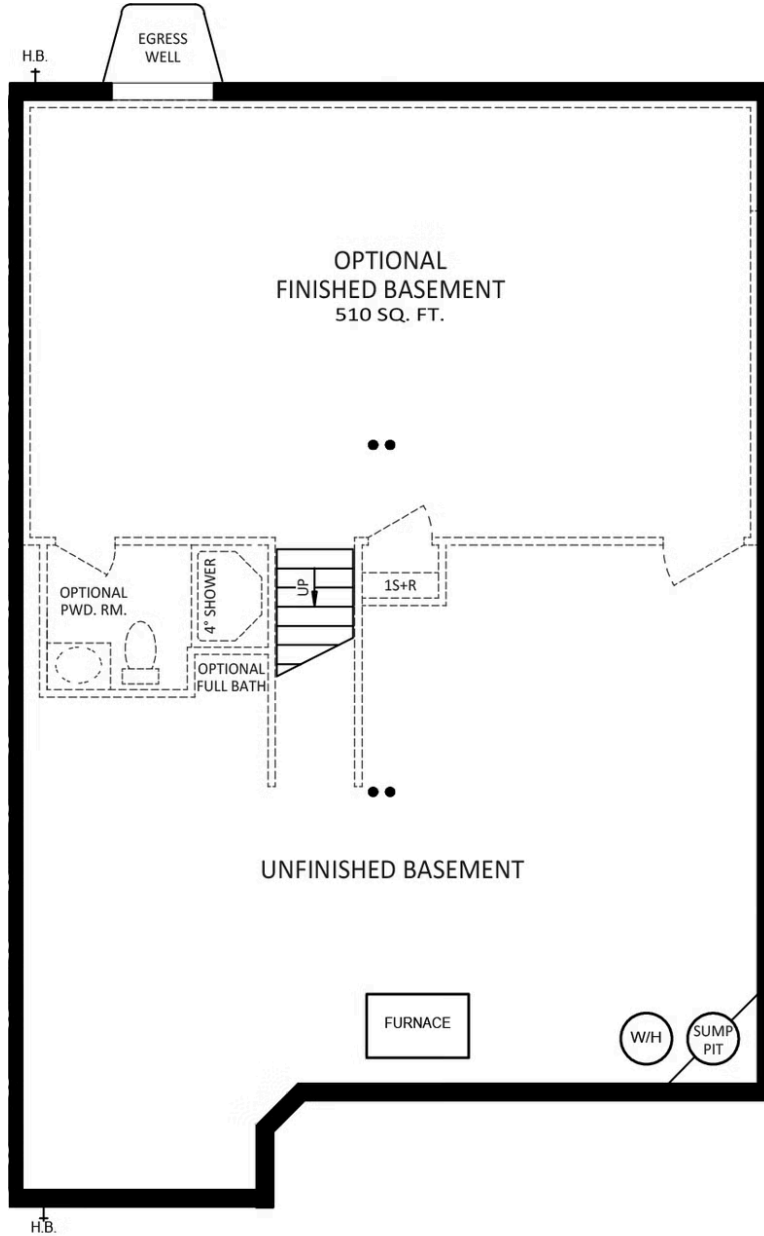
SECOND LEVEL



Have Questions? Ask...
KELLY

(484) 772-2693 / bhmarketing@berkshomes.com





FOUNDATION

LOWER LEVEL



Have Questions? Ask...
KELLY

(484) 772-2693 / bhmarketing@berkshomes.com

