



COMMUNITY  
**Stone Mill Estates  
Townhomes**

PRICED  
FROM  
**\$284,990**



**3  
Beds**



**2.5  
Baths**



**2-Car  
Garage**



**1,695**

-

**2,455  
Sq. Ft.**

Welcome to the Gardenia, a townhome designed for modern living. Spanning 1,695 square feet, this home offers practical and stylish living. On the first floor, you'll find a spacious family room ideal for everyday living and entertaining. The kitchen is well-equipped and offers optional upgrades to enhance your cooking experience. The breakfast area provides a comfortable space for casual meals and a convenient powder room for guests. Upstairs, the Gardenia features three bedrooms, including a primary suite with its own private bath. Two additional bedrooms are perfect for family, guests, or a home office. A second full bath on this floor provides convenient access for everyone. The laundry room is also located on this level. For added flexibility, you can finish the basement to create additional living space tailored to your needs. The home also includes a two-car garage, providing ample parking and storage. Optional upgrades, such as expanding the family room or breakfast area or adding a fireplace, are available to customize this floorplan. Discover how the Gardenia's thoughtful design can fit seamlessly into your lifestyle.

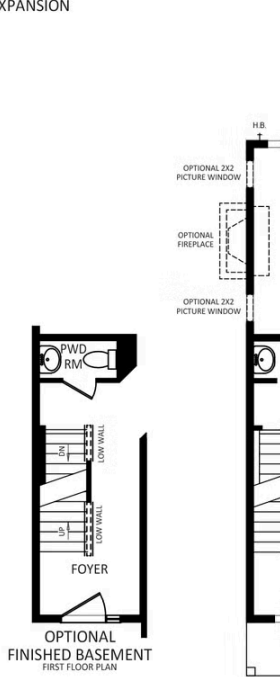
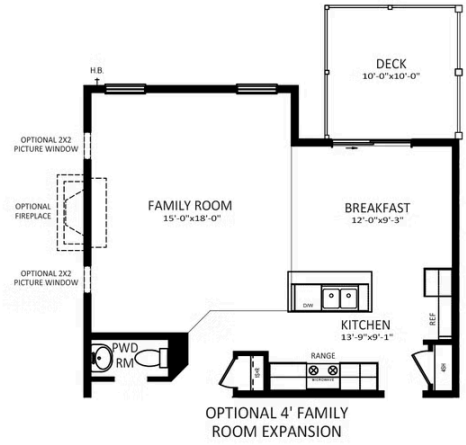
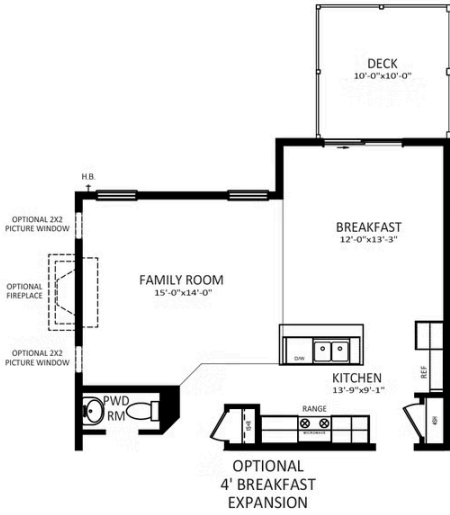


**Have Questions? Ask...**

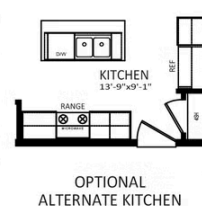
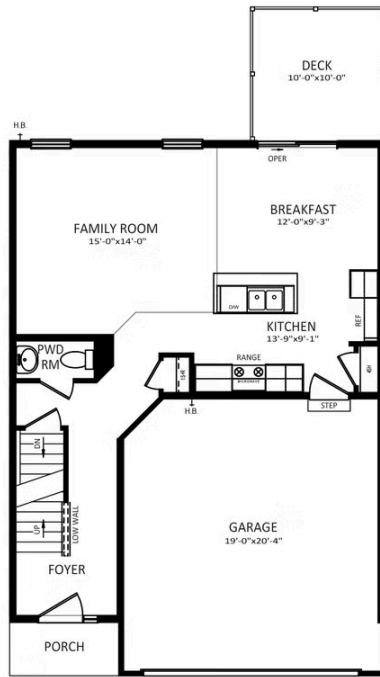
**KELLY**

(484) 772-2693 / [bhmarketing@berkshomes.com](mailto:bhmarketing@berkshomes.com)





EXTERIOR UNIT WINDOW LAYOUT



FIRST LEVEL



**Have Questions? Ask...**

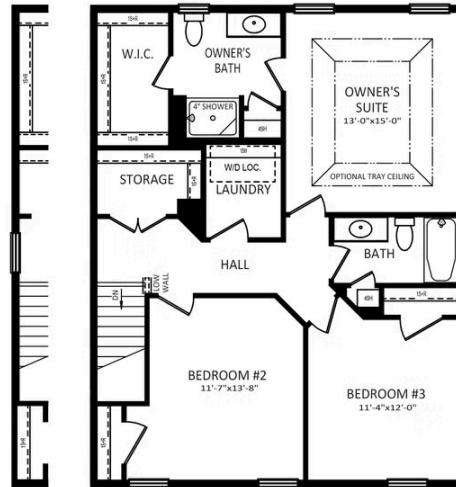
KELLY

(484) 772-2693 / [bhmarketing@berkshomes.com](mailto:bhmarketing@berkshomes.com)





OWNER'S BATH  
DOUBLE BOWL  
VANITY PACKAGE



EXTERIOR UNIT  
WINDOW LAYOUT

**SECOND FLOOR**

**SECOND LEVEL**

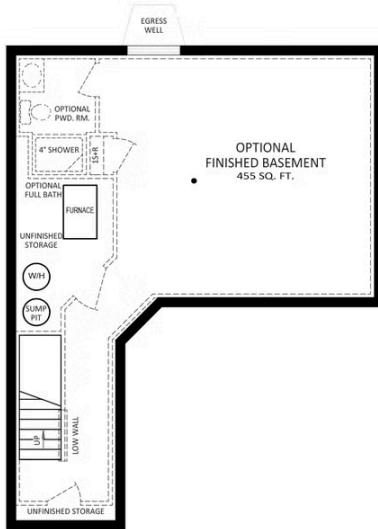


**Have Questions? Ask...**

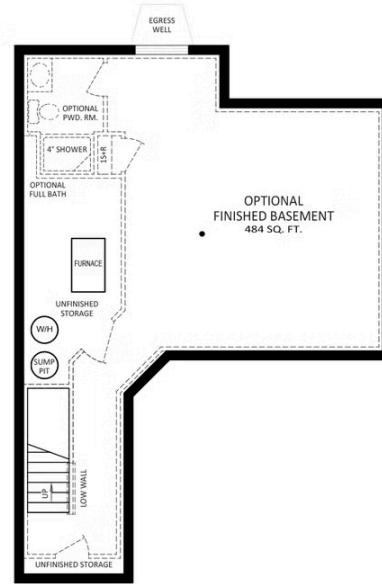
**KELLY**

(484) 772-2693 / [bhmarketing@berkshomes.com](mailto:bhmarketing@berkshomes.com)

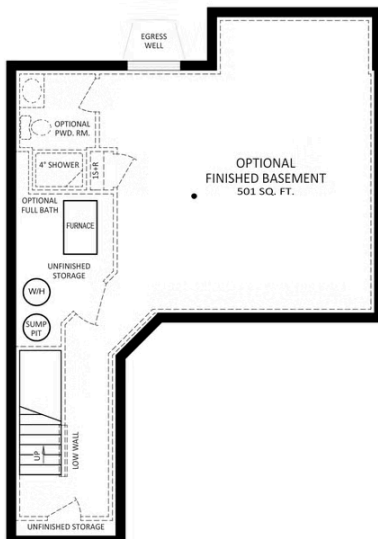




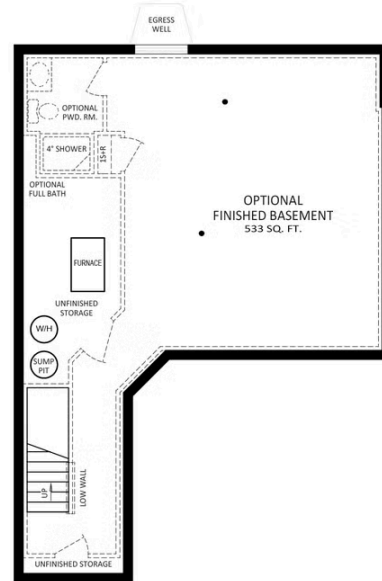
**FOUNDATION**



**OPTIONAL  
FAMILY ROOM EXPANSION  
FOUNDATION PLAN**



**OPTIONAL  
BREAKFAST EXPANSION  
FOUNDATION PLAN**



**OPTIONAL  
FIRST FLOOR EXPANSION  
FOUNDATION PLAN**

**LOWER LEVEL**



**Have Questions? Ask...**

**KELLY**

(484) 772-2693 / [bhmarketing@berkshomes.com](mailto:bhmarketing@berkshomes.com)

