

# Meriwether

COMMUNITY  
**Stone Mill Estates**

PRICED FROM  
**\$370,990**



**3  
Beds**



**2.5 -  
4  
Baths**



**2-Car  
Garage**



**1,771 -  
2,220  
Sq. Ft.**

The Meriwether is a beautiful 3-bedroom, 2.5-bathroom new home with an open floor plan that maximizes space and functionality. The family room seamlessly flows into the kitchen, creating a central gathering area for your family and friends to enjoy. The first floor of this new home also features a dining room, pantry, powder room, and flex room off of the foyer, providing convenience and versatility and allowing new homeowners to create a home office or additional living space. The primary suite is upstairs with a walk-in closet and a full private bath. The second floor of this new home design also holds two additional bedrooms, a full bathroom, and a laundry room. With options to expand the breakfast area, choose an alternate kitchen layout, upgrade the primary bath, or finish the basement, you can personalize this new home to your liking.

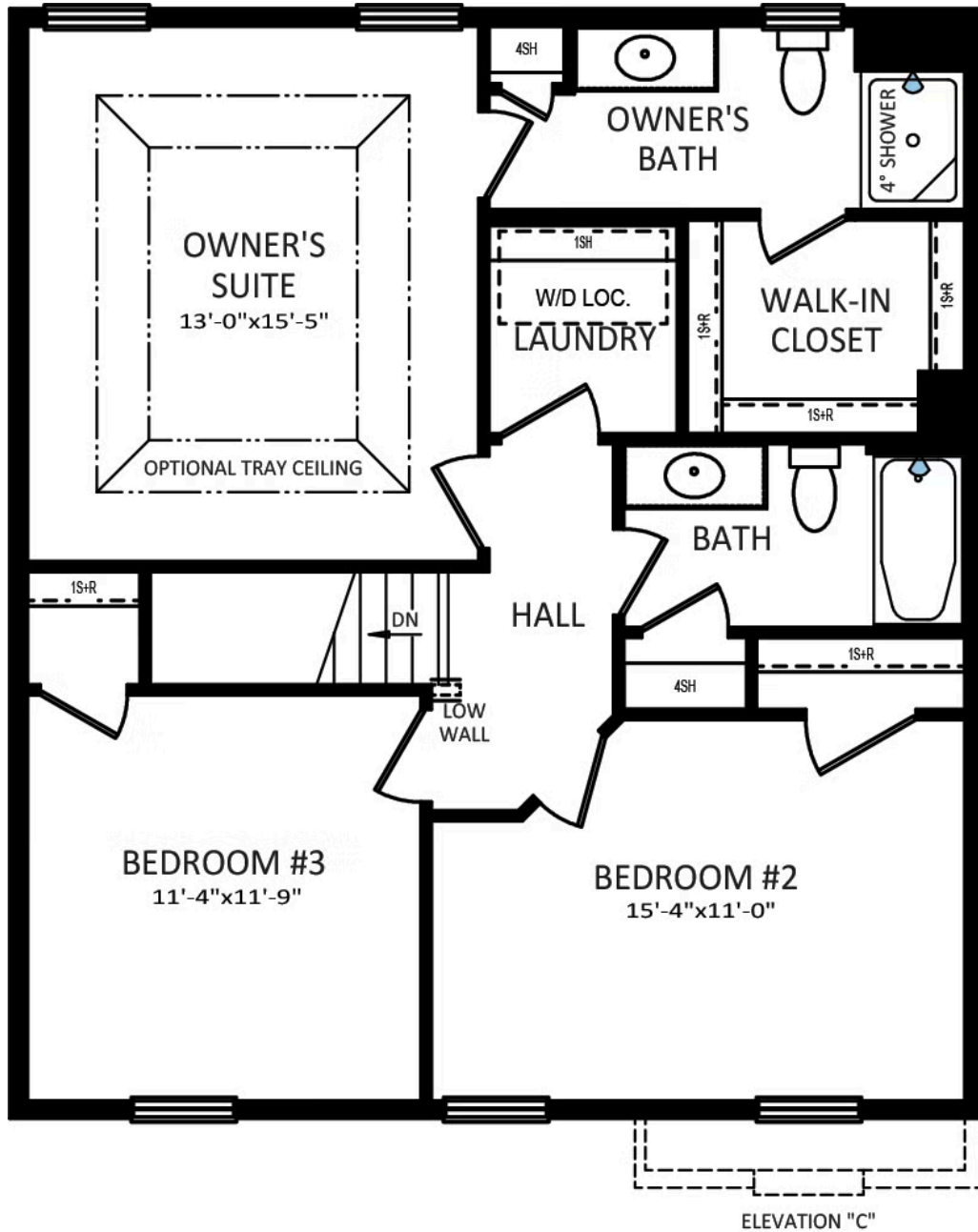
**Have Questions? Ask...**

**KELLY**

(484) 772-2693 / [bhmarketing@berkshomes.com](mailto:bhmarketing@berkshomes.com)







# SECOND FLOOR

SECOND LEVEL

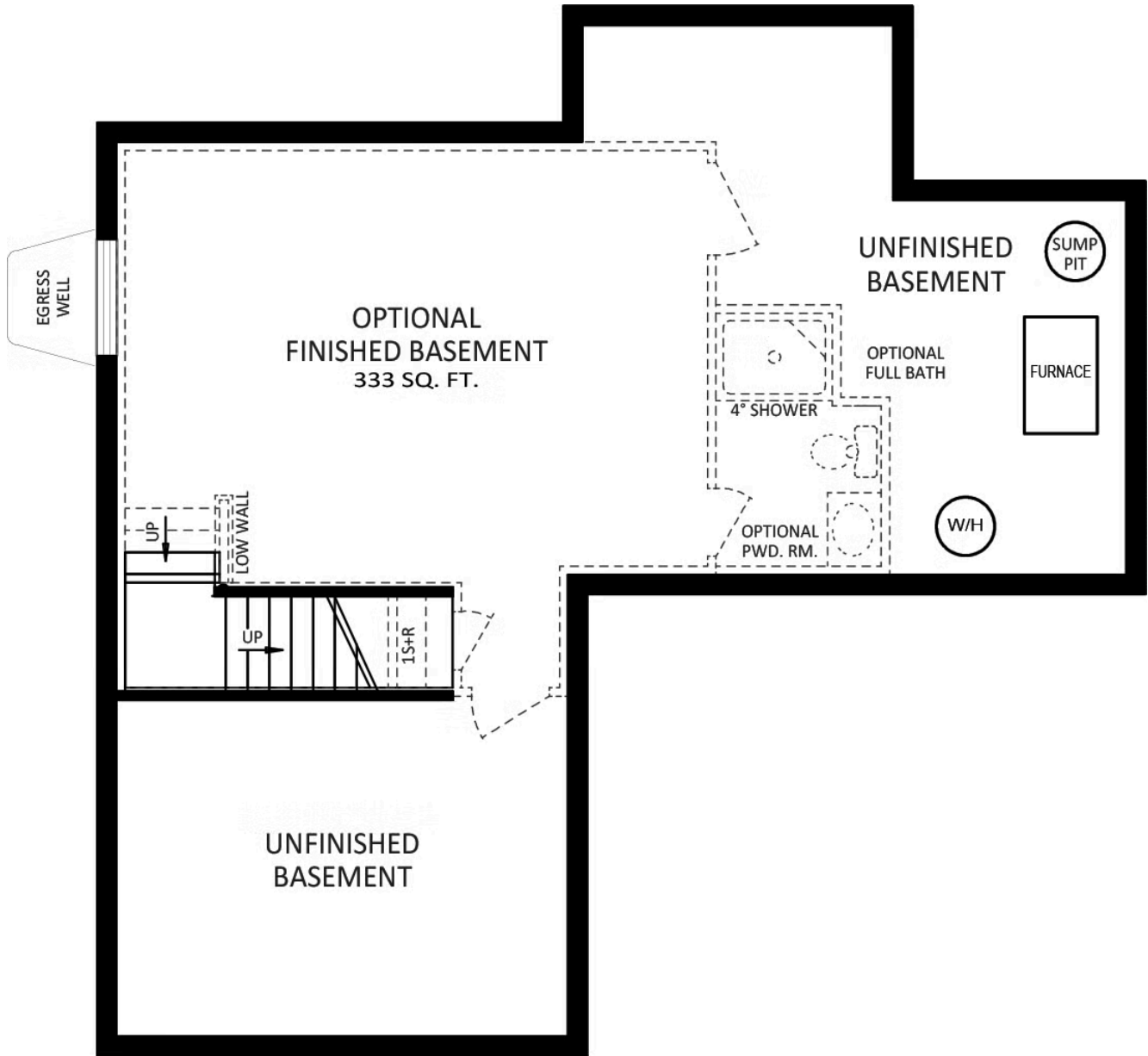


**Have Questions? Ask...**

**KELLY**

(484) 772-2693 / [bhmarketing@berkshomes.com](mailto:bhmarketing@berkshomes.com)





# FOUNDATION

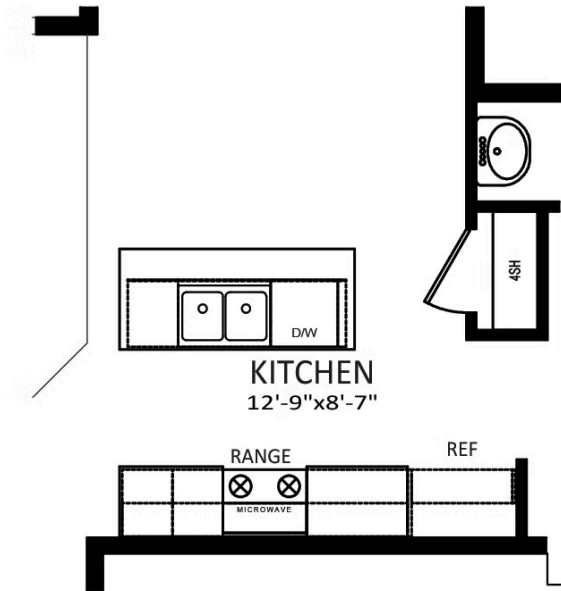
LOWER LEVEL

**Have Questions? Ask...**

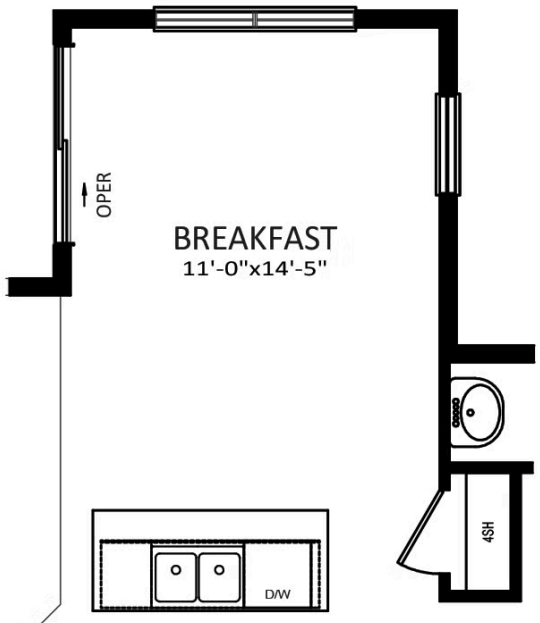
KELLY

(484) 772-2693 / [bhmarketing@berkshomes.com](mailto:bhmarketing@berkshomes.com)





**OPTIONAL ALTERNATE  
KITCHEN LAYOUT**



**OPTIONAL BREAKFAST  
AREA EXPANSION**

FIRST LEVEL OPTIONS

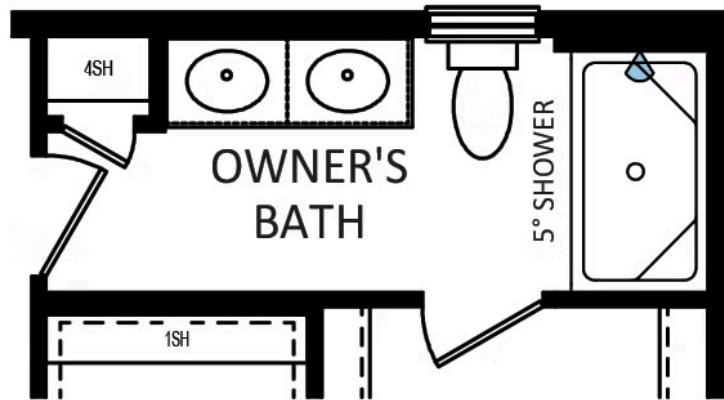


**Have Questions? Ask...**

KELLY

(484) 772-2693 / [bhmarketing@berkshomes.com](mailto:bhmarketing@berkshomes.com)





## OWNER'S BATH UPGRADE PACKAGE

SECOND LEVEL OPTION

**Have Questions? Ask...**

KELLY

(484) 772-2693 / [bhmarketing@berkshomes.com](mailto:bhmarketing@berkshomes.com)

