

Sassafras

COMMUNITY
Stone Mill Estates

PRICED FROM
\$361,990



**3
Beds**



**2.5 -
4
Baths**



**2-Car
Garage**



**1,724
-
2,380
Sq. Ft.**

Welcome to the Sassafras! This 2-story, single-family home boasts 1,724 sq. ft, including an expansive kitchen/breakfast area comb that flows perfectly into the large family room. This model offers a flex room where you can use your imagination to make what your heart desires. Maybe it's an office for that remote worker, a hobby room for the sewing enthusiast, or a playroom for your kids! The great element about a flex room is it can be transformed to grow with your wants and needs as time goes on. Up the steps to the second floor, you will find 3 bedrooms, including a private suite with a full bath and walk-in closet. The convenient 2nd-floor laundry room is perfect for helping with laundry needs. This floor plan offers the option to finish the basement for an additional 445 sq. ft. of living space.

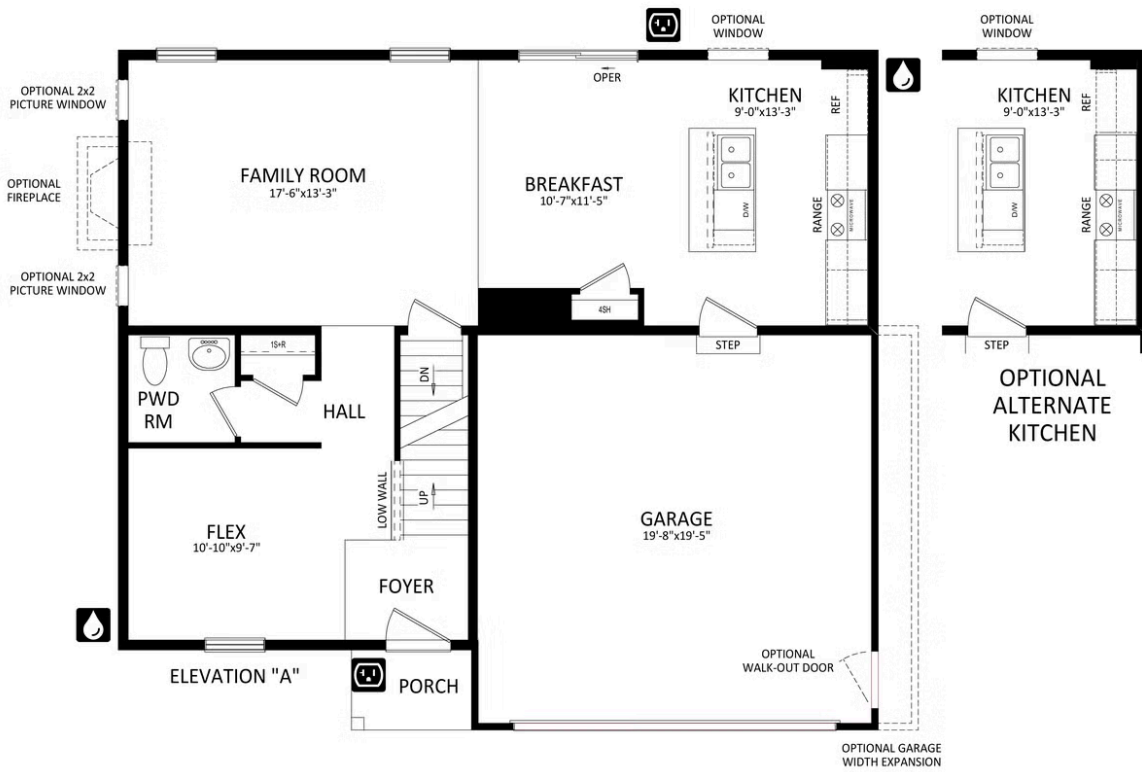
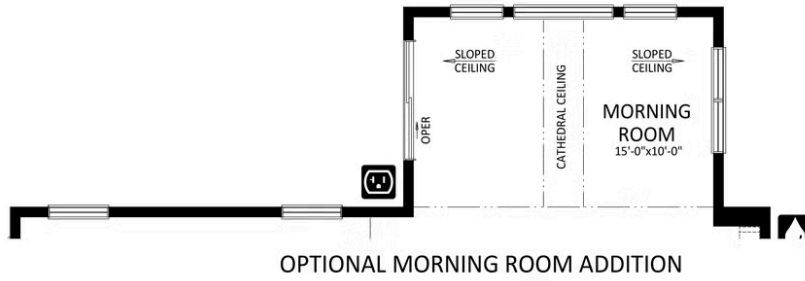


Have Questions? Ask...

KELLY

(484) 772-2693 / bhmarketing@berkshomes.com





FIRST LEVEL



Have Questions? Ask...

KELLY

(484) 772-2693 / bhmarketing@berkshomes.com





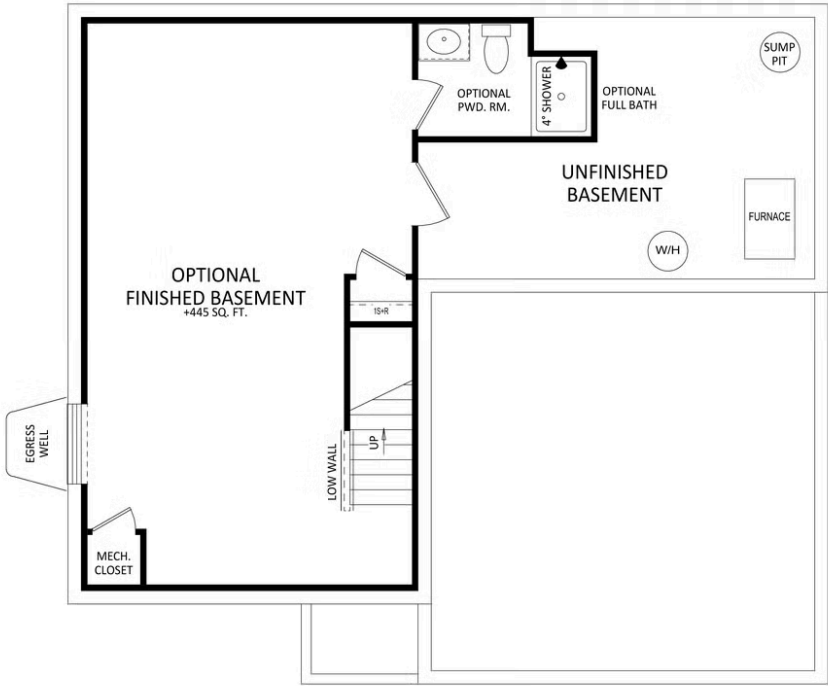
SECOND LEVEL

Have Questions? Ask...

KELLY

(484) 772-2693 / bhmarketing@berkshomes.com





LOWER LEVEL



Have Questions? Ask...

KELLY

(484) 772-2693 / bhmarketing@berkshomes.com

