

# 2035 Hampden Court LOT 13

\$409,990

QUICK MOVE-IN

FLOORPLAN

**Lilac**

COMMUNITY

**Townes Of Hampden**



**3  
Beds**



**3.5  
Baths**



**2-Car  
Garage**



**2321  
Sq. Ft.**



REPRESENTATIVE PHOTO



REPRESENTATIVE PHOTO



REPRESENTATIVE PHOTO

This 2,326 sq. ft. home offers a thoughtful blend of style, comfort, and functionality across three finished levels.

The main floor is anchored by a spacious kitchen featuring a center island, granite countertops, tile backsplash, upgraded cabinetry, stainless steel appliances, and recessed lighting. The open layout flows seamlessly into the family room—enhanced with recessed lighting—and a bright breakfast area, creating an inviting space for gatherings. Durable engineered vinyl plank flooring runs throughout the first floor, while a convenient mudroom with bench and a powder room add everyday practicality.

Upstairs, the owner's suite provides a retreat with...

**Cumberland Valley School District**

### Sales Office Hours

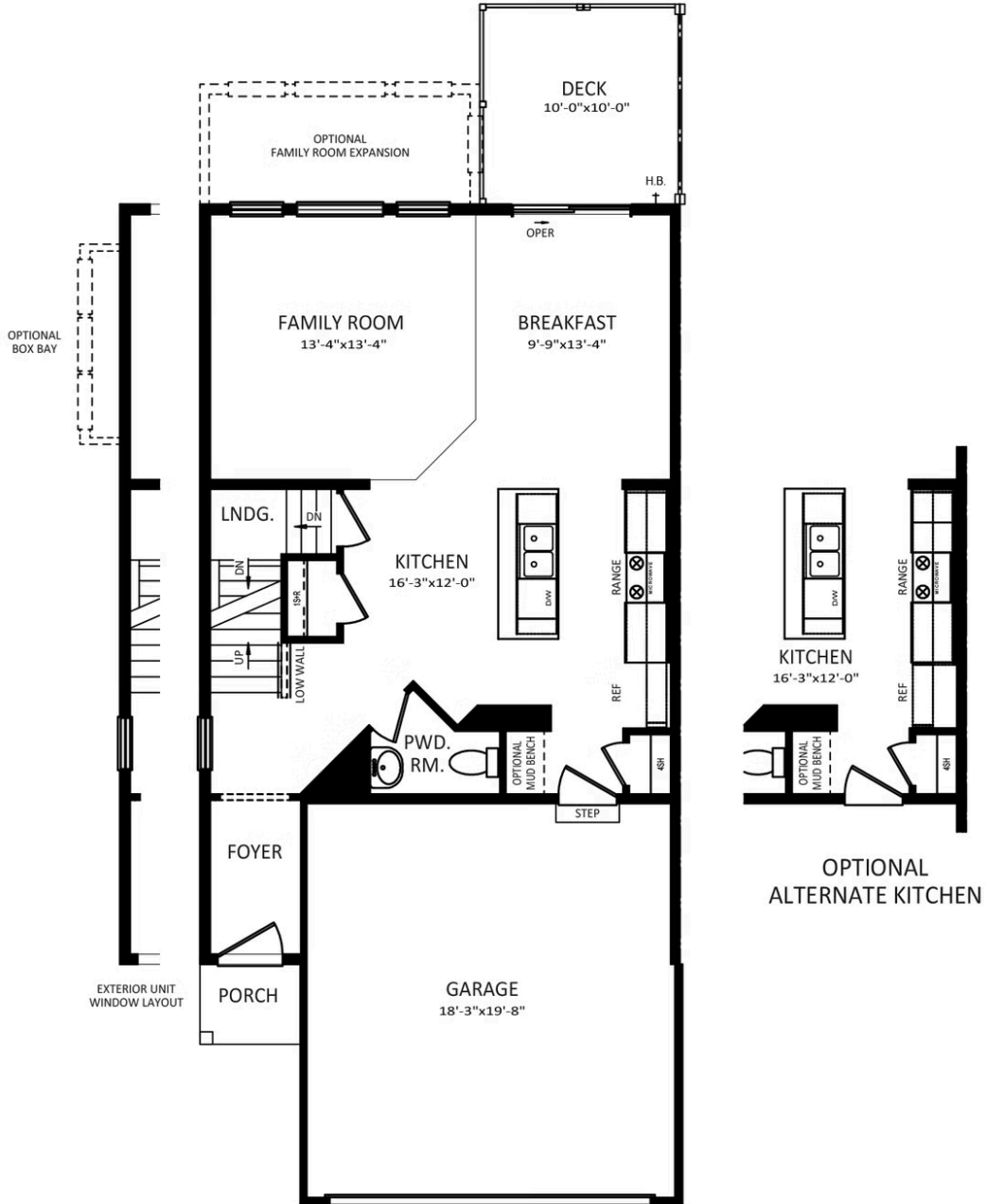
By Appointment: Open Wednesday - Saturday 10:00 am - 5:00 pm | Closed Sundays, Mondays, and Tuesdays



**Have Questions? Ask...**  
**KELLY**

(484) 772-2693 / [bhmarketing@berkshomes.com](mailto:bhmarketing@berkshomes.com)





## FIRST FLOOR

LILAC FIRST LEVEL

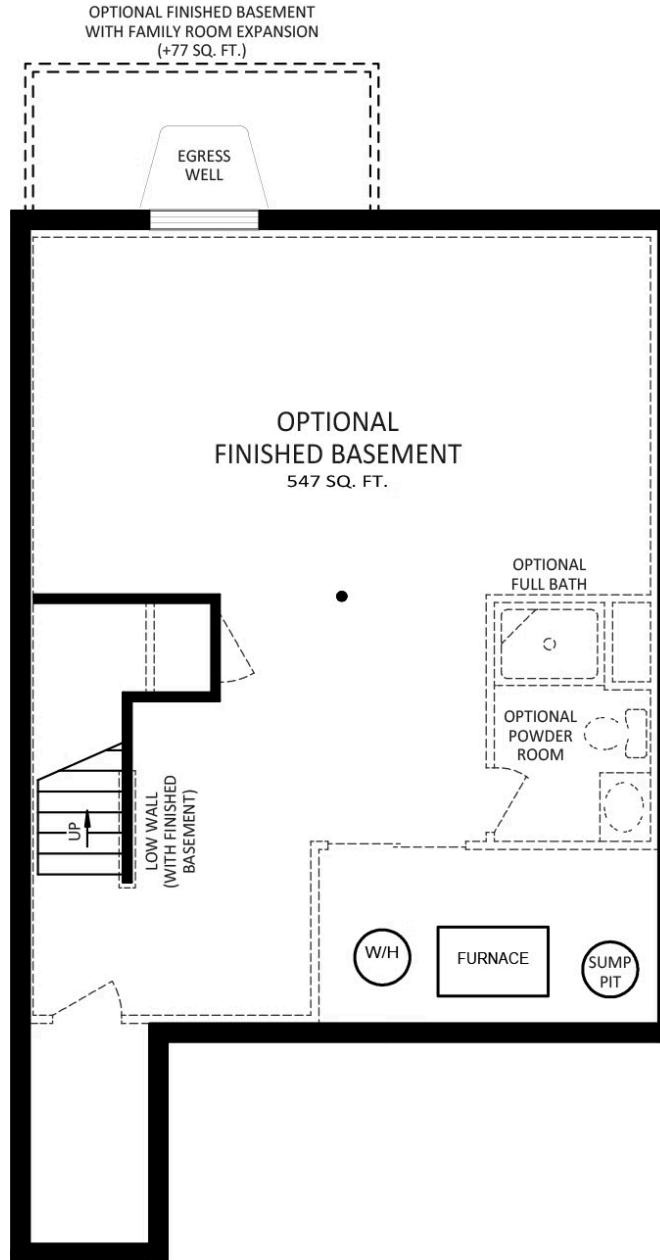


**Have Questions? Ask...**  
**KELLY**

(484) 772-2693 / [bhmarketing@berkshomes.com](mailto:bhmarketing@berkshomes.com)







## FOUNDATION

LILAC LOWER LEVEL



**Have Questions? Ask...**  
KELLY

(484) 772-2693 / [bhmarketing@berkshomes.com](mailto:bhmarketing@berkshomes.com)

