



QUICK MOVE-IN

FLOORPLAN

Lilac

COMMUNITY

Townes Of Hampden



**3
Beds**



**2.5
Baths**



**2-Car
Garage**



**1938
Sq. Ft.**



This 3-bedroom, 2.5-bath home features upgrades throughout and is ready to enjoy from day one.

The kitchen features granite countertops, a tile backsplash, upgraded cabinetry, stainless steel appliances, a center island, and recessed lighting. Engineered vinyl plank flooring runs through the entire first floor, connecting the expanded family room, breakfast area, and kitchen in an open, comfortable layout. A deck off the back and a powder room and mudroom bench round out the main level.

Upstairs, the Owner's Suite includes recessed lighting, tray ceiling, and an Owner's Bath with a double vanity, plus a walk-in closet. Two additional bedrooms, a full bath, and an upstairs laundry complete the second floor.



Cumberland Valley School District

Sales Office Hours

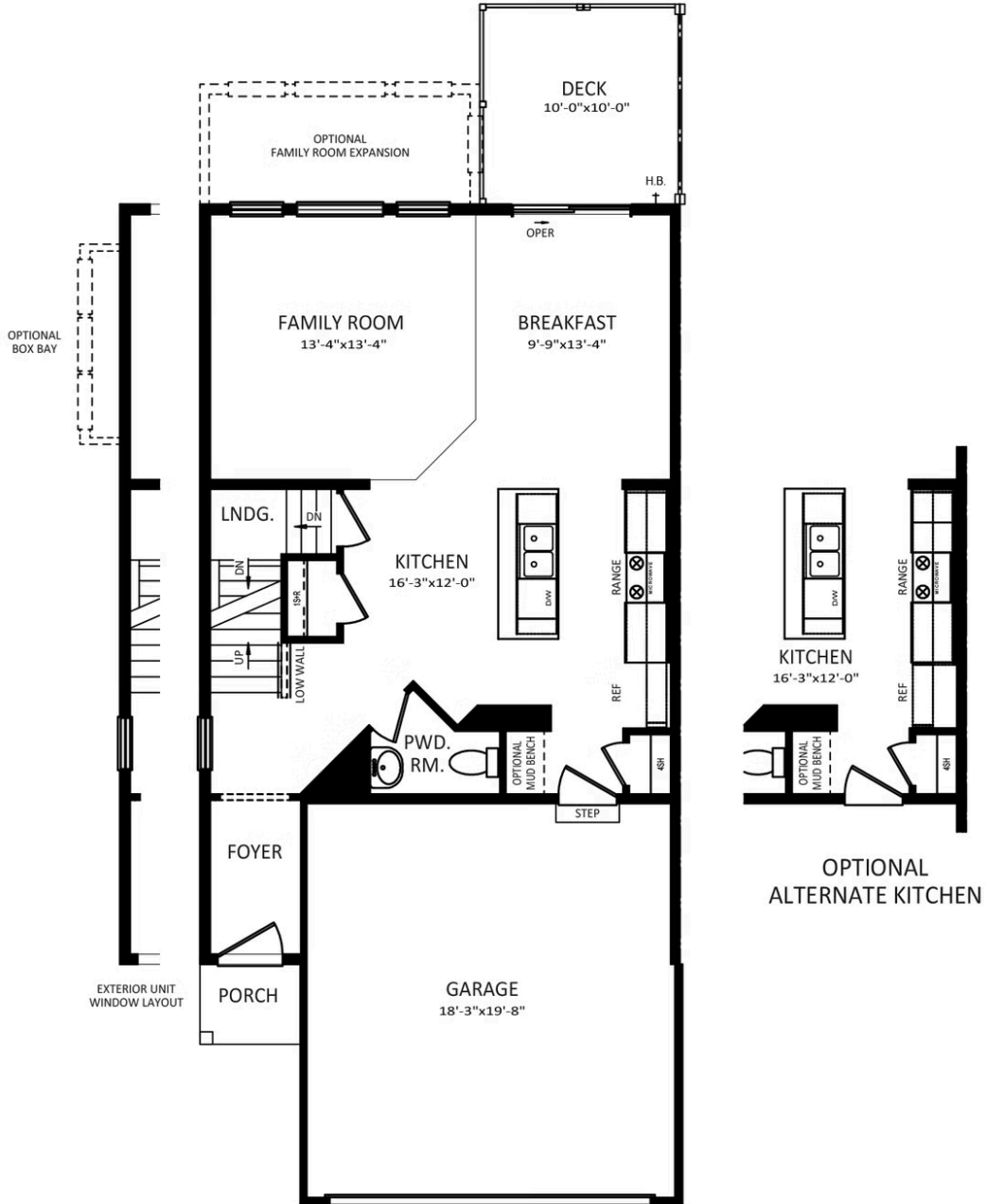
By Appointment: Open Wednesday - Saturday 10:00 am - 5:00 pm | Closed Sundays, Mondays, and Tuesdays



Have Questions? Ask...
KELLY

(484) 772-2693 / bhmarketing@berkshomes.com





FIRST FLOOR

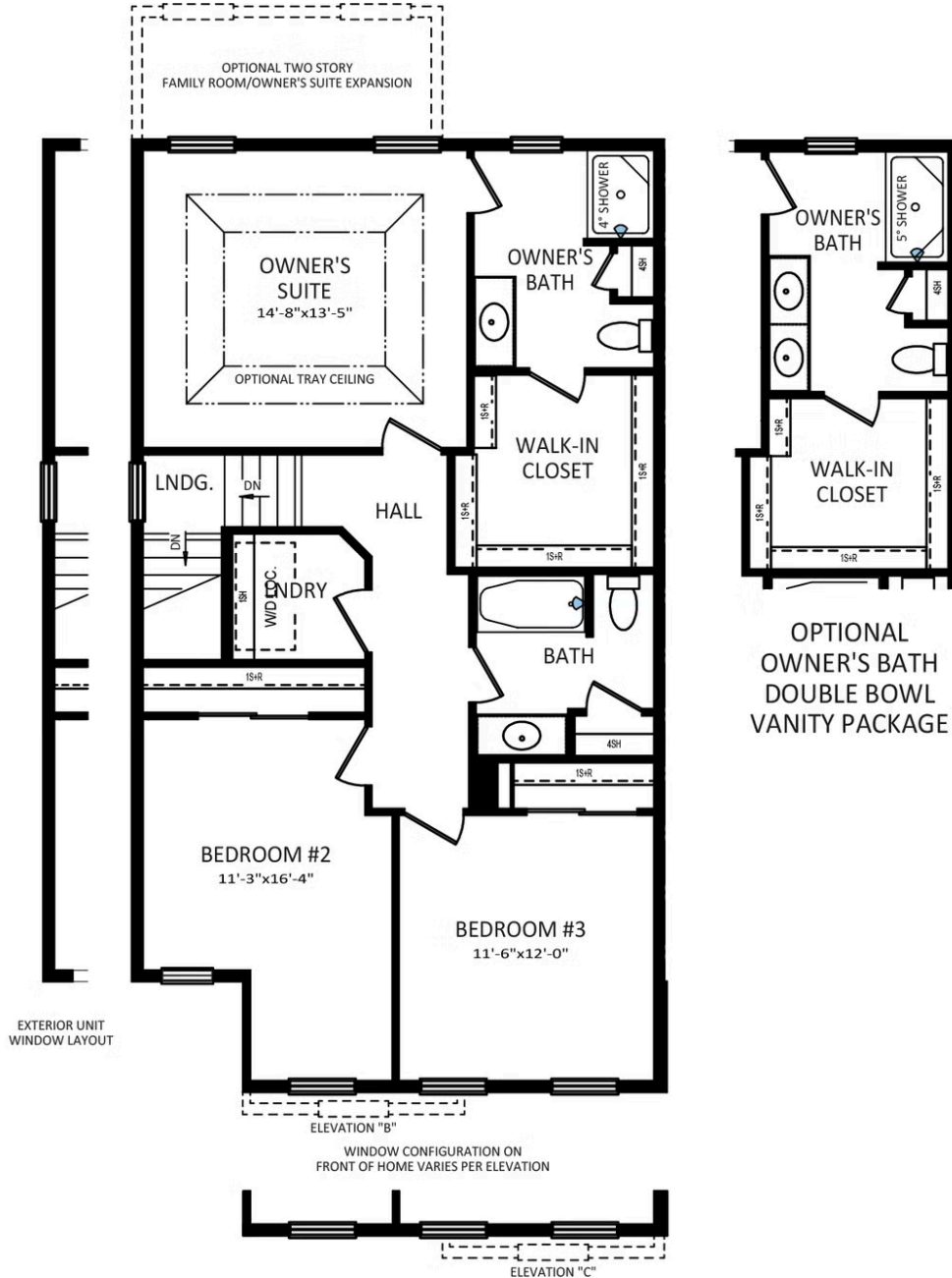
LILAC FIRST LEVEL



Have Questions? Ask...
KELLY

(484) 772-2693 / bhmarketing@berkshomes.com





OPTIONAL
OWNER'S BATH
DOUBLE BOWL
VANITY PACKAGE

SECOND FLOOR

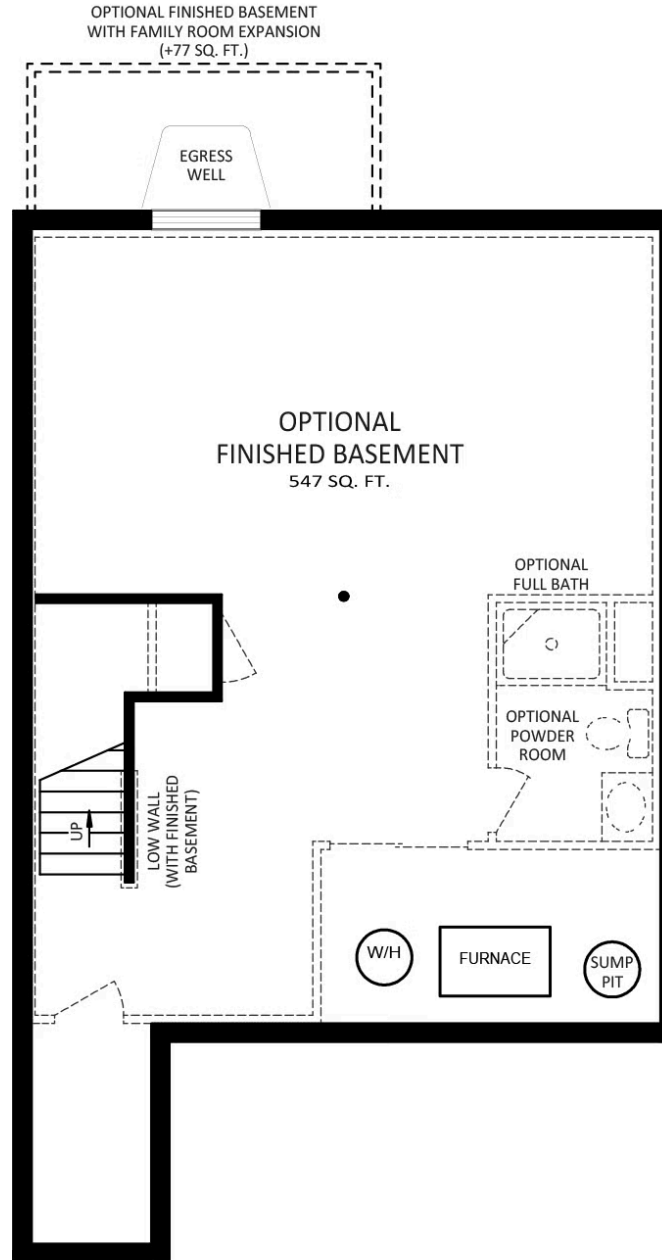
LILAC SECOND LEVEL



Have Questions? Ask...
KELLY

(484) 772-2693 / bhmarketing@berkshomes.com





FOUNDATION

LILAC LOWER LEVEL



Have Questions? Ask...
KELLY

(484) 772-2693 / bhmarketing@berkshomes.com

