

2235 Hampden Court LOT 25

\$419,990



QUICK MOVE-IN

FLOORPLAN

Lilac

COMMUNITY

Townes Of Hampden



**3
Beds**



**3.5
Baths**



**2-Car
Garage**



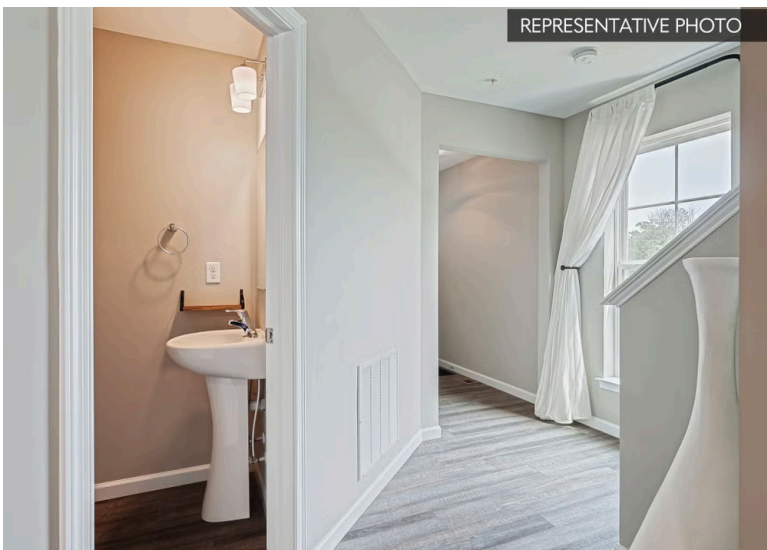
**2328
Sq. Ft.**



This 3-bedroom, 3.5-bath home features upgrades throughout and is ready to enjoy from day one.

The kitchen features quartz countertops, a tile backsplash, upgraded cabinetry, stainless steel appliances, a center island, and recessed lighting. Engineered vinyl plank flooring runs through the entire first floor, connecting the family room, breakfast area, and kitchen in an open, comfortable layout. A deck off the back and a powder room and mudroom bench round out the main level.

Upstairs, the Owner's Suite includes recessed lighting and an Owner's Bath with a double vanity, plus a walk-in closet. Two additional bedrooms, a full bath, and an upstairs laundry complete the second floor.



The fully finished walkout basement adds significant...

Cumberland Valley School District

Sales Office Hours

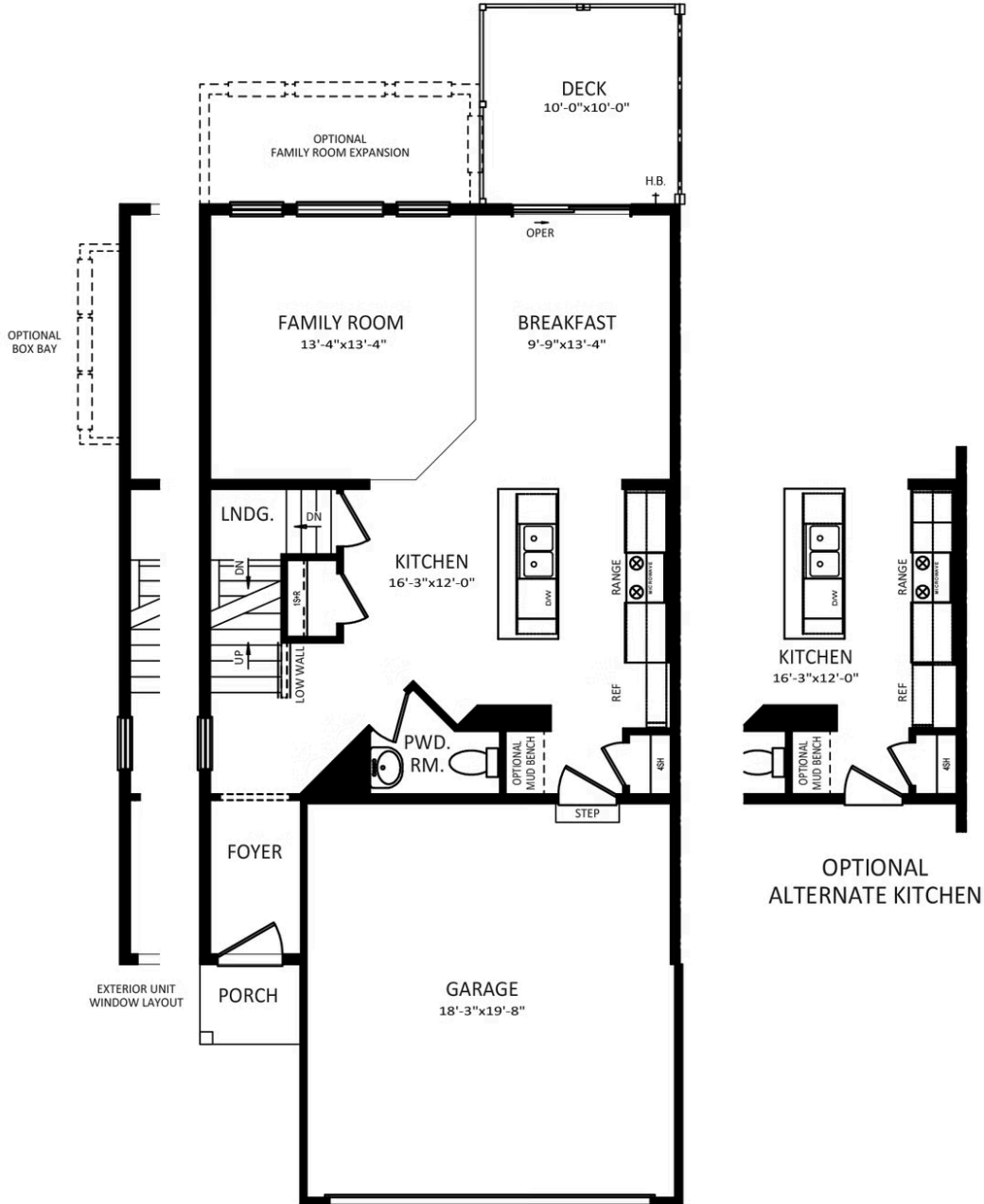
By Appointment: Open Wednesday - Saturday 10:00 am - 5:00 pm | Closed Sundays, Mondays, and Tuesdays



Have Questions? Ask...
KELLY

(484) 772-2693 / bhmarketing@berkshomes.com





FIRST FLOOR

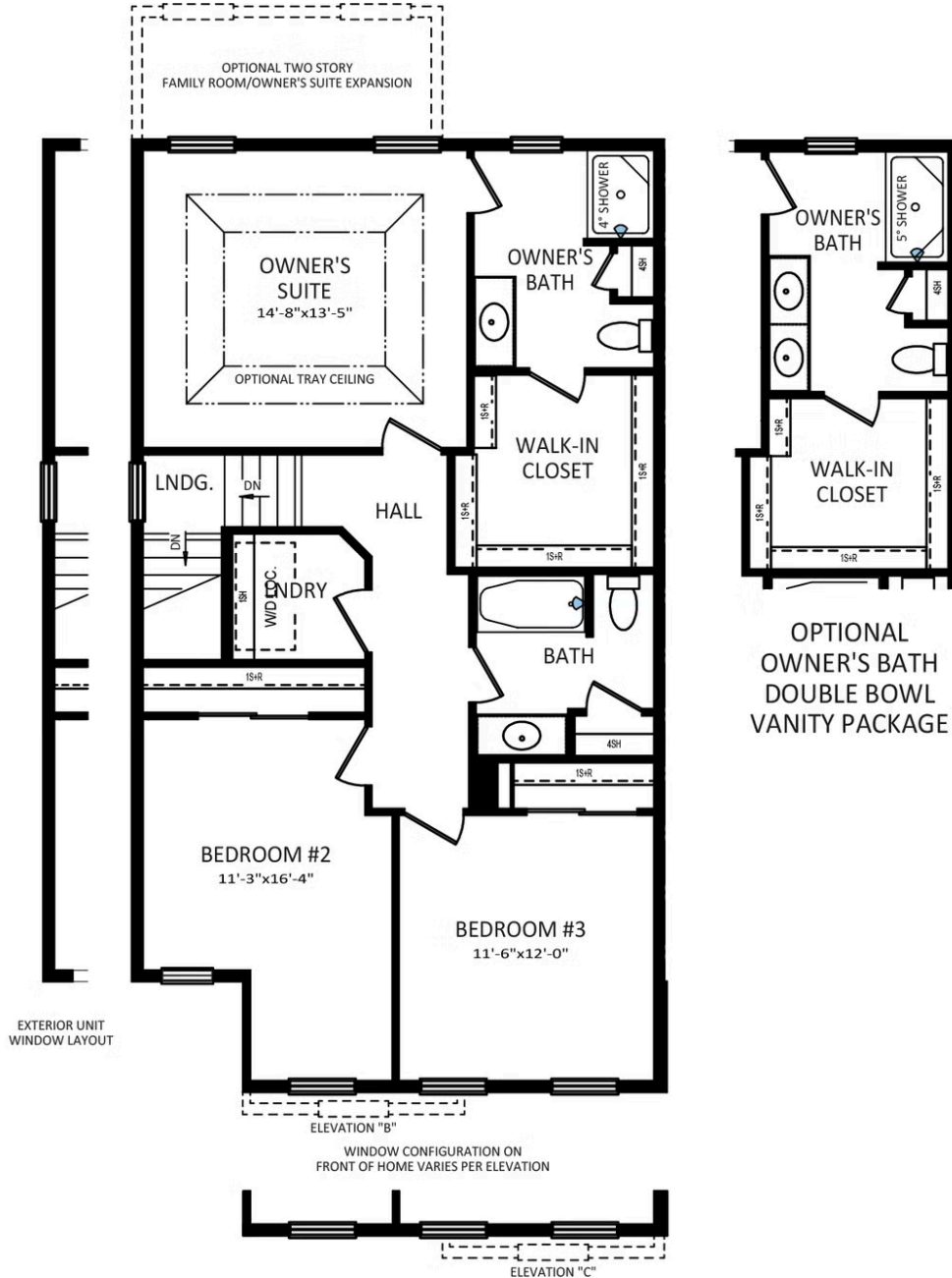
LILAC FIRST LEVEL



Have Questions? Ask...
KELLY

(484) 772-2693 / bhmarketing@berkshomes.com





SECOND FLOOR

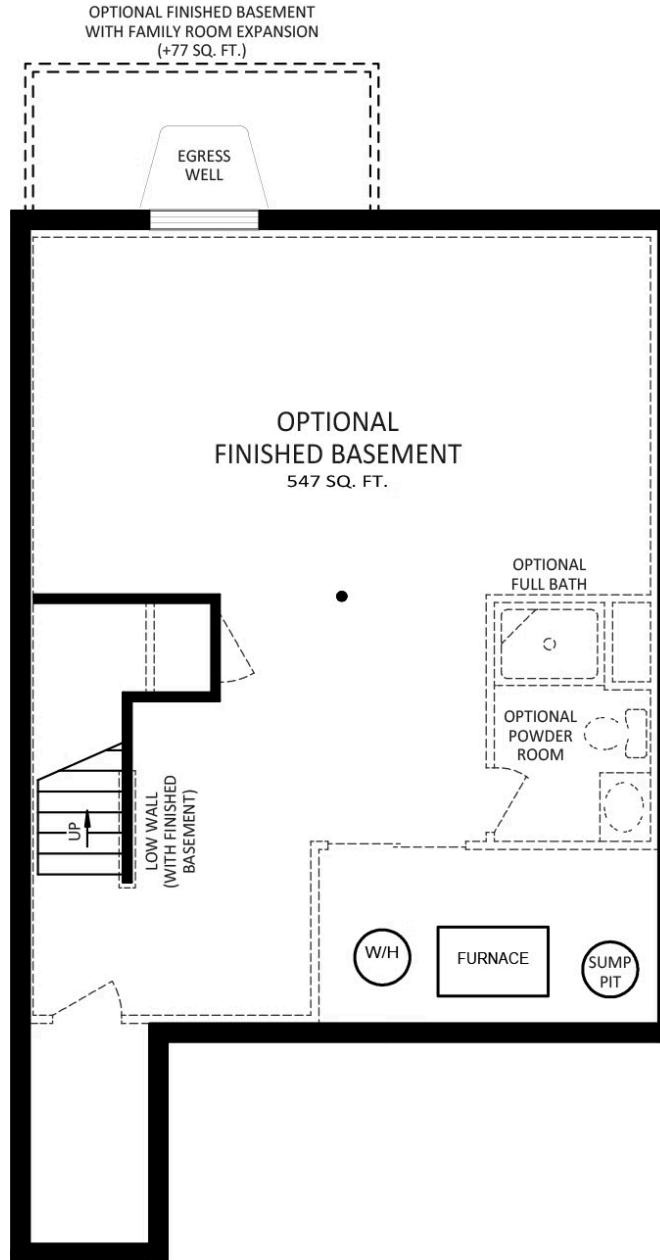
LILAC SECOND LEVEL



Have Questions? Ask...
KELLY

(484) 772-2693 / bhmarketing@berkshomes.com





FOUNDATION

LILAC LOWER LEVEL



Have Questions? Ask...
KELLY

(484) 772-2693 / bhmarketing@berkshomes.com

