

# 2255 Hampden Court LOT 27

\$449,990



QUICK MOVE-IN

FLOORPLAN

**Lilac**

COMMUNITY

**Townes Of Hampden**



**3  
Beds**



**3.5  
Baths**



**2-Car  
Garage**



**2473  
Sq. Ft.**



This 3-bedroom, 3.5-bath home features upgrades throughout and is ready to enjoy from day one.

The kitchen features quartz countertops, a tile backsplash, upgraded cabinetry, stainless steel appliances, a center island, and recessed lighting. Engineered vinyl plank flooring runs through the entire first floor, connecting the family room, breakfast area, and kitchen in an open, comfortable layout. A deck off the back and a powder room and mudroom bench round out the main level.

Upstairs, the Owner's Suite includes recessed lighting and an Owner's Bath with a double vanity, tiled shower with a seat, plus a walk-in closet. Two additional bedrooms, a full bath, and an upstairs laundry complete the second floor....



**Cumberland Valley School District**

**Sales Office Hours**

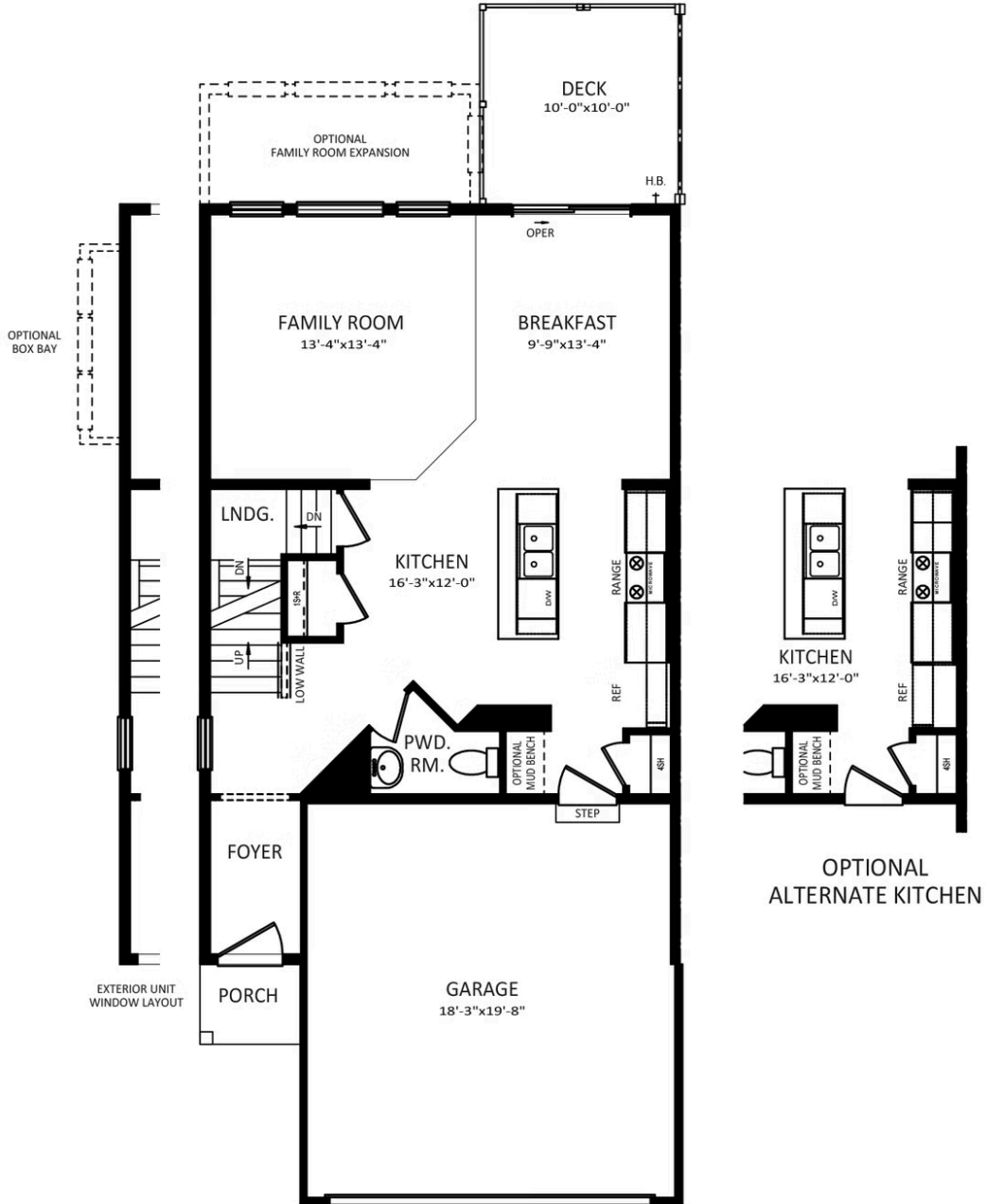
By Appointment: Open Wednesday - Saturday 10:00 am - 5:00 pm | Closed Sundays, Mondays, and Tuesdays



**Have Questions? Ask...**  
**KELLY**

(484) 772-2693 / [bhmarketing@berkshomes.com](mailto:bhmarketing@berkshomes.com)





## FIRST FLOOR

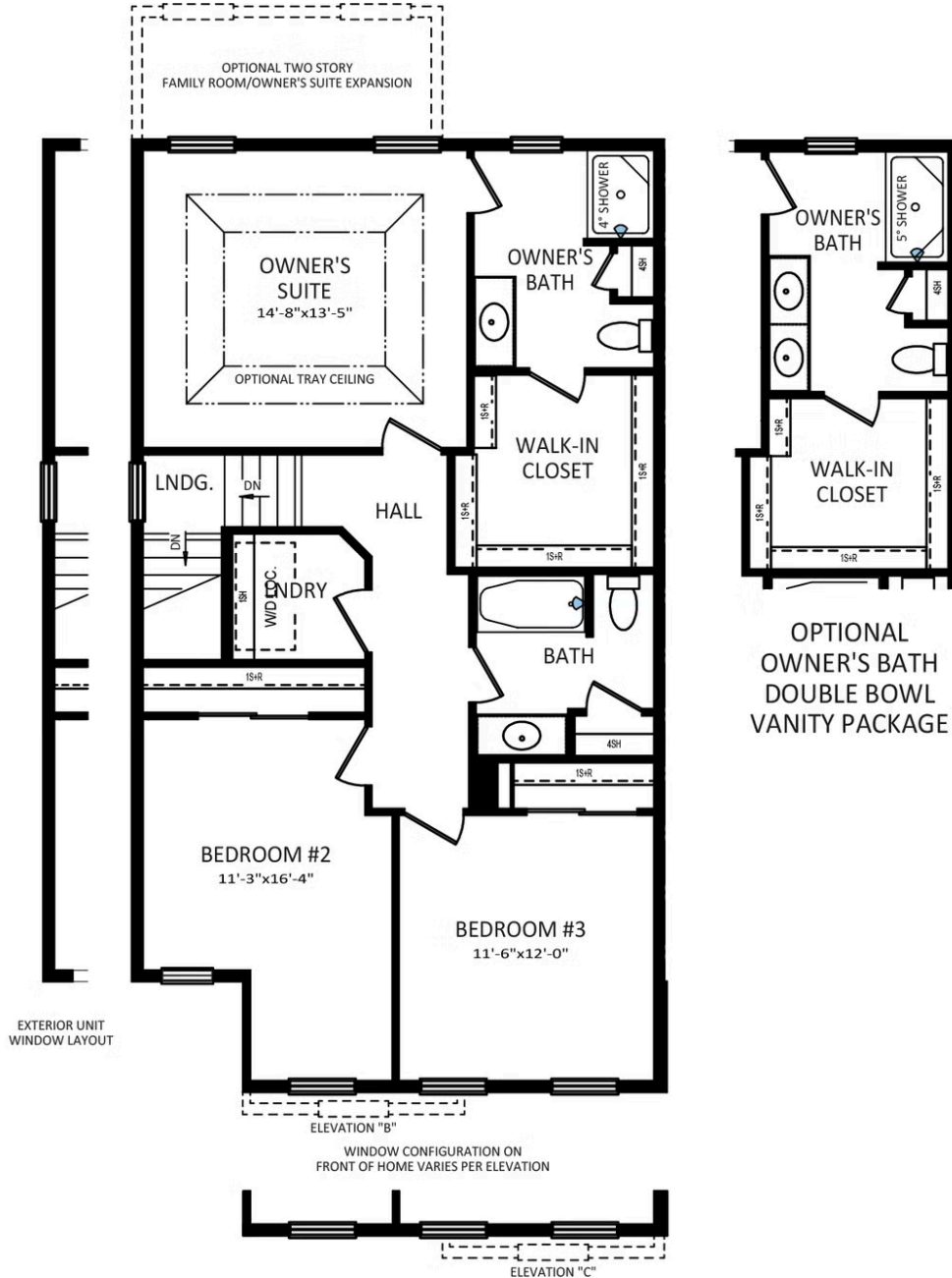
LILAC FIRST LEVEL



Have Questions? Ask...  
**KELLY**

(484) 772-2693 / [bhmarketing@berkshomes.com](mailto:bhmarketing@berkshomes.com)





**SECOND FLOOR**

LILAC SECOND LEVEL

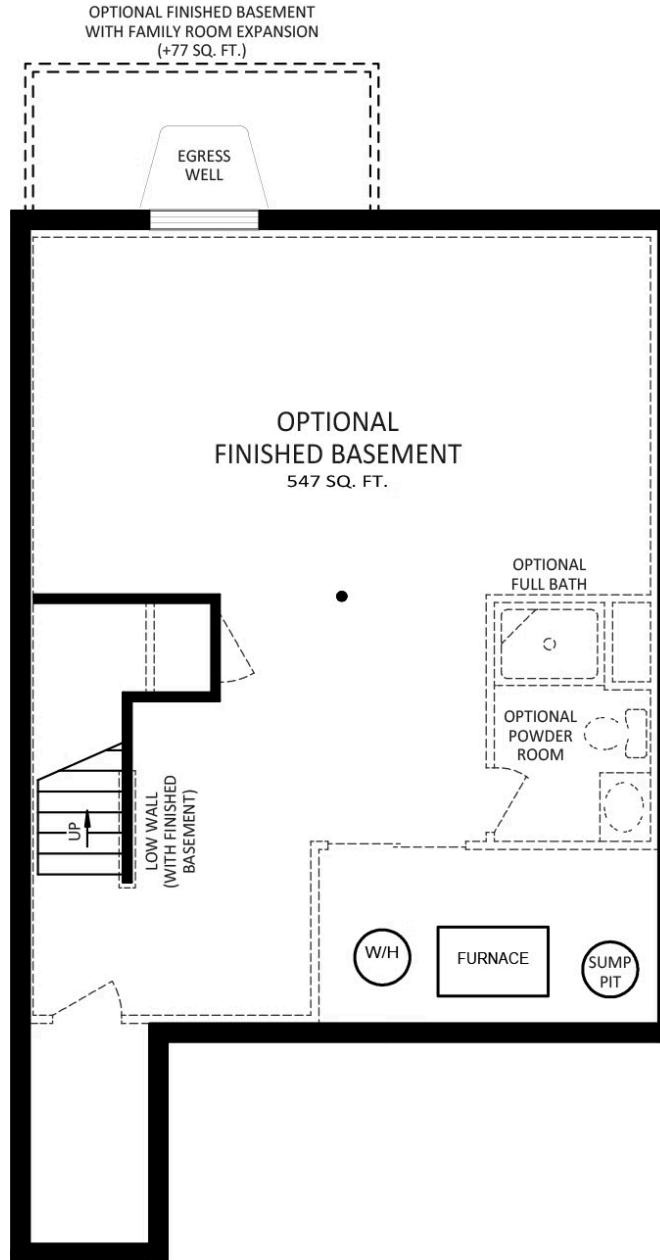


**Have Questions? Ask...**  
**KELLY**

(484) 772-2693 / [bhmarketing@berkshomes.com](mailto:bhmarketing@berkshomes.com)



# 2255 Hampden Court LOT 27



## FOUNDATION

LILAC LOWER LEVEL



Have Questions? Ask...  
**KELLY**

(484) 772-2693 / [bhmarketing@berkshomes.com](mailto:bhmarketing@berkshomes.com)

